

# Recreational Marijuana

## Permanent Regulations

City of Tacoma

Planning & Development Services Department

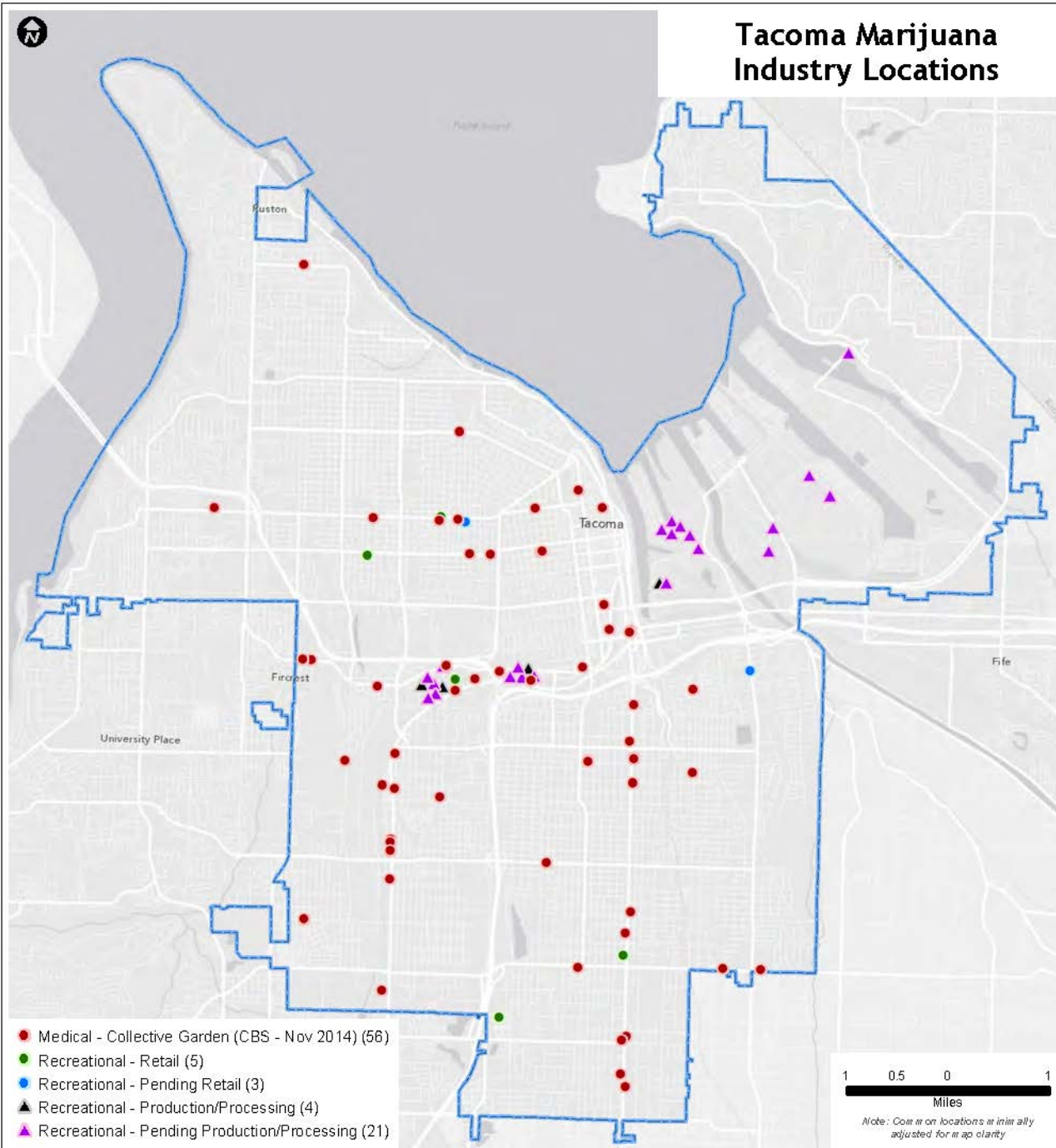
Planning Commission  
November 5, 2014



# Meeting Objectives

- Cue up the public review draft
  - Issues & analysis
  - Solicit direction on code changes
- Next meeting: set hearing date and approve public review draft

# Tacoma Marijuana Industry Locations



# Existing marijuana sites

- Recreational marijuana businesses
  - Initial concerns: Concentration, industrial land capacity
  - Operations: Too new to identify impacts
- Medical marijuana enforcement/issues
  - Suspected dispensary – Proactive in 2012 for initially identified dispensaries
  - Collective gardens – Complaint-based
    - Within 600 feet of school, park, day care, etc
    - Nuisance code (ex. smell)

# Potential code changes

## LOCATION

- Add to buffers list (e.g., homeless shelters)
- Create retail distribution requirement
  - Limit: One per MUC

## PROCESS

- Applicability (to all new marijuana businesses)
- Review process/public notification

## STANDARDS

- Hours of operation
- Limits on “bad operators”

# Locations

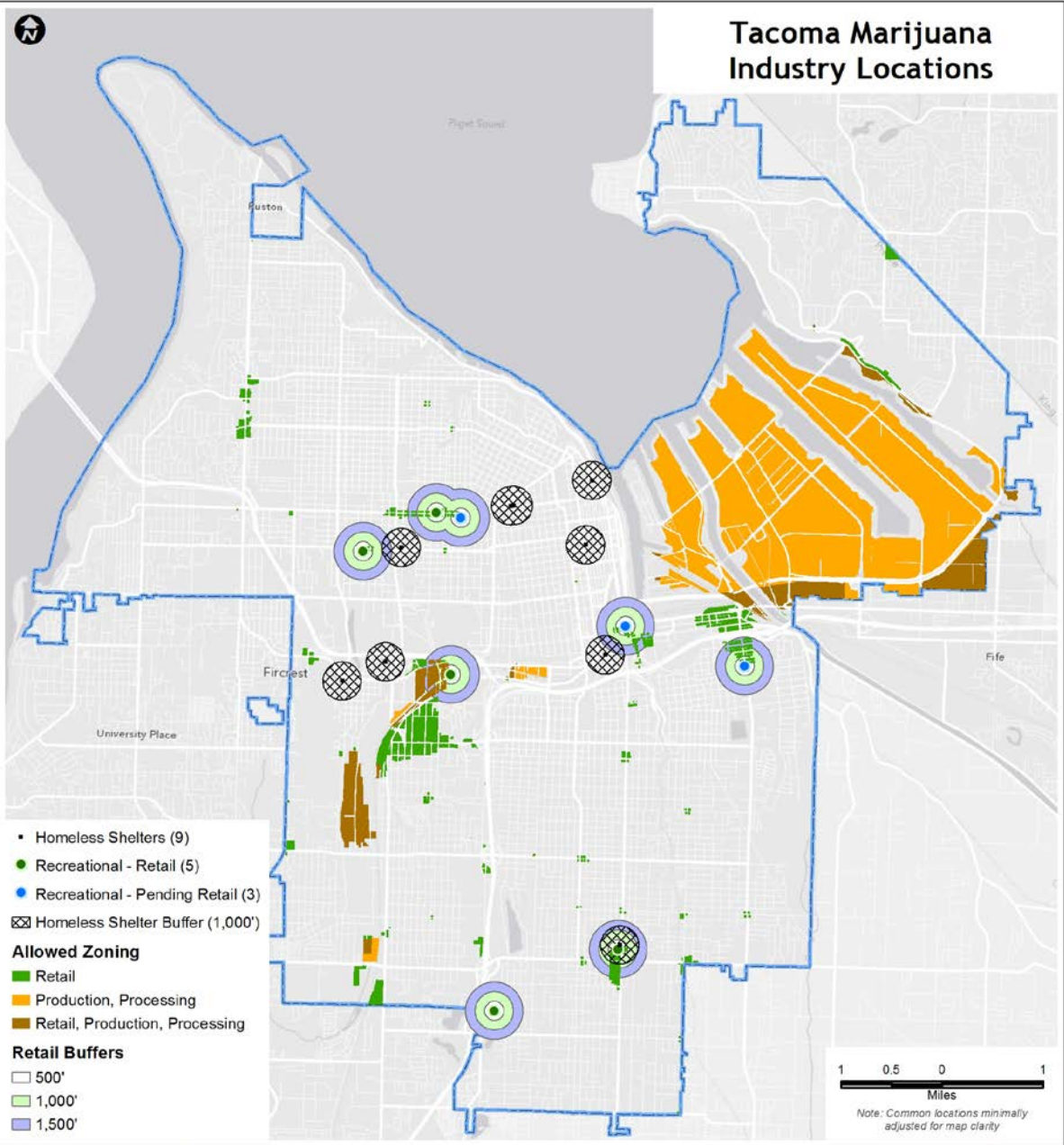
## INTERIM CODE

- Zoning Districts
  - Retail: Commercial, mixed-use, downtown, light industrial
  - Production and Processing: heavy industrial districts
- Buffering
  - 1,000 feet from kids-related uses (per state)
  - Retail: 1,000 feet from sensitive populations (e.g., detox)
  - Not allowed in non-conforming sites

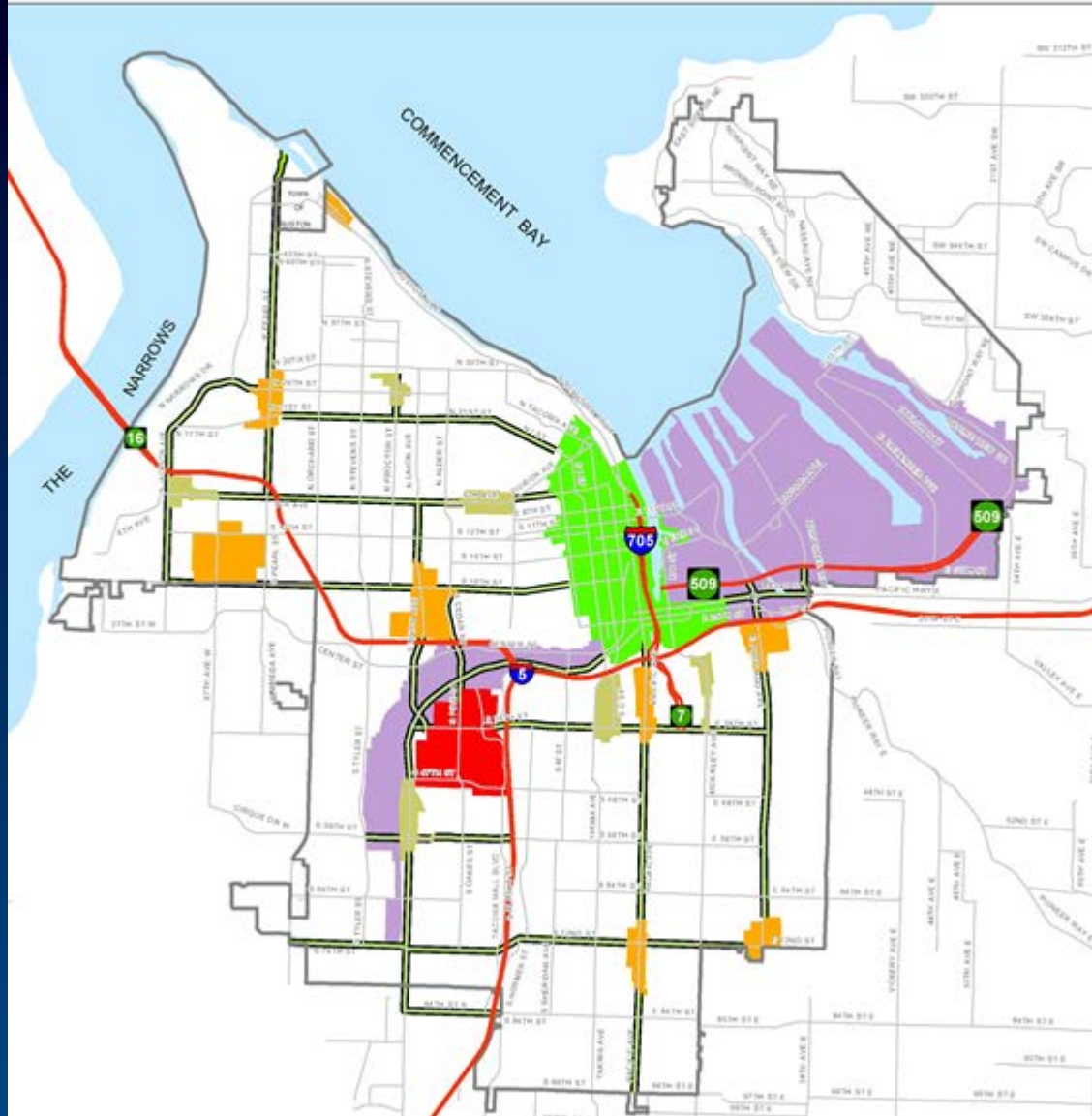
## POTENTIAL CHANGES:

- Buffer homeless shelters
- Distribution between retail (500, 1000, 1500 ft ...)
- Limit 1 retail per MUC

# Tacoma Marijuana Industry Locations



# Designated Centers





# Process – Potential Changes

- Applicability
  - Clarify that all new marijuana businesses must follow rules
- Local Review
  - Create new administrative process

# City review process – Potential change

- Supplement state license review
- Overview:
  - Non-discretionary review
  - Verify compliance w/ all standards
  - Public notification (retail only?)
  - Backstop & coordination for City review
  - Capture notice/review costs

# License Review Process

- **Applicant applies to WSLCB:**
  - Background check on applicants
  - Location analysis
  - Review of business plan
- **WSLCB notifies City:**
  - Location analysis (zoning)
  - Review of building
  - Local background and code enforcement check
- **City provides letter to WSLCB:**
  - Letter will raise no objections or recommend denial
  - State considers City's comments in making final decision
- **Tacoma administrative review/approval**

NOTICE OF MARIJUANA LICENSE APPLICATION

RETURN TO: WASHINGTON STATE LIQUOR CONTROL BOARD  
Liquor Division  
3100 Pacific St, Box 43075  
Olympia, WA 98546-3075  
Callaway: WA 360-437-3075  
Fax: (360) 433-2710  
Website: www.lcb.wa.gov  
DATE: 12/02/11

TO: TACOMA CITY OF POLICE  
RE: NEW APPLICATION

USE: 602-347-791-001-0001

License: 412299  
Themselves: TOP COF FARMS County: 27  
Address: 3121 S LAWRENCE ST  
TACOMA, WA 98609-4823

Phone No.: 360-438-4748

APPLICANT:  
TOP COF FARMS, LLC  
RICKETS, JAMES 1903-03-09  
(Spouse)  
RICKETS, JENNIFER 1977-01-16  
WARR, MARGIE 1968-06-10  
WARR, ELSIE 1960-04-11  
(Spouse)

Privileges Applied For:  
MARIJUANA PRODUCE TIER 2  
MARIJUANA PRODUCE

As required by RCW 9A.04.020(7), the Liquor Control Board is notifying you that the above has applied for a marijuana license. You have 30 days from the date of this notice to give your input on this application. If we do not receive this notice back within 30 days, we will assume you have no objection to the issuance of this license. If you need additional time to respond you must submit a written request for an extension of up to 20 days, with the request you must have a written request for an extension on the city council for Marijuana and Cannabis. If you have any questions, please contact the Marijuana and Cannabis Unit at (360) 464-3772.

1. Do you approve of applicant?  YES  NO

2. Do you approve of location?  YES  NO

3. If you disapprove on the above information, please indicate a license. Do you wish to request an alternative location?  YES  NO

4. If you disapprove, per RCW 9A.04.020(7)(c) you must attach a letter to the State explaining the reasons for the objection and a statement of all the facts on which your objection(s) are based.  YES  NO

DATE: \_\_\_\_\_

SIGNATURE OF APPLICANT, CITY MANAGER, COUNTY COMMISSIONER OR OFFICER: \_\_\_\_\_

# Standards – Potential changes

- Hours of operation
  - Current: closed midnight-8am
  - Potential: closed 9pm (10pm Fri/Sat) – 10am
- Prohibit “bad operators”
  - Supplement state rules & City License Code
  - Potential: Review applications for code enforcement issues (at other sites)

# Other issues

- Industrial capacity
  - Limit marijuana prod/process to ensure space for major employer to expand
  - Allow prod/processing in M-1, WR
- Shorelines: Interim code prohibits marijuana in Shorelines
  - Has not been adopted by Ecology
  - To be submitted as limited SMP amendment

# Potential changes - Review

## LOCATION

- Add to buffers list (e.g., homeless shelters)
- Create retail distribution requirement
  - Limit: One per MUC

## PROCESS

- Applicability (to all new marijuana businesses)
- Review process/public notification

## STANDARDS

- Hours of operation
- Limit “bad operators”

# Next steps

Ongoing – stakeholder outreach

Nov 19<sup>th</sup> – public review packet & set public hearing

Dec 2<sup>nd</sup> – Council COW on medical enforcement strategy

Dec 3<sup>rd</sup> – Public Hearing

Dec 17<sup>th</sup> – Recommendation to Council

Also:

Dec 4<sup>th</sup> 11:30 am (tentative) – Spinning Heads tour (RSVP)