



Emergency Shelter Expansion

City of Tacoma | Neighborhood and Community Services



Shelter Expansion

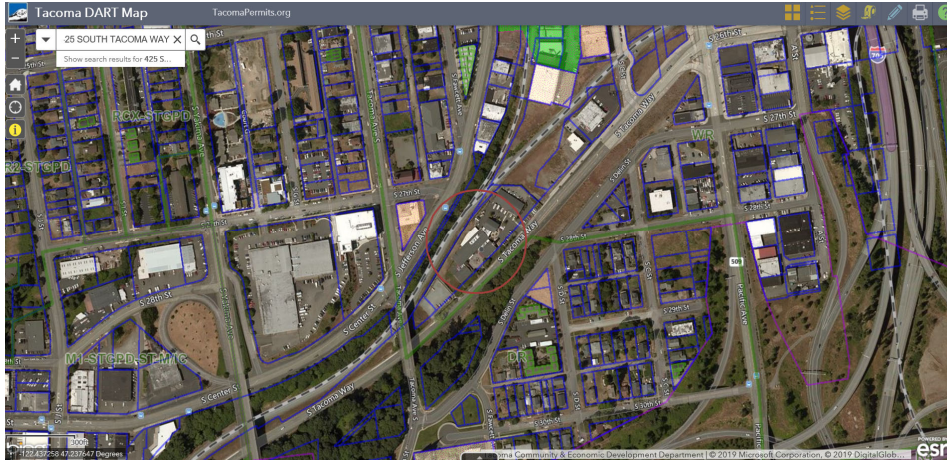


- Increase number of permanent shelter beds at the Tacoma Rescue Mission by December 2019
 - Repurpose building at current location to expand services
 - 40-50 additional shelter spaces for single adults

Funding Source	Amount
Private Donations	\$600,000
Community Development Block Grant	\$350,000
REET (Real Estate Excise Tax)	\$1,000,000
General Fund	\$250,000
TOTAL	\$2,200,000

2

Shelter Expansion Location



425 South Tacoma Way

3

Shelter Expansion Timeline



- City Council Resolution – May 7, 2019
- Construction plans finalized – Spring 2019
- Construction begins – June 2019
- Expanded shelter in current facility – June 2019
- Construction completed – Winter 2019

4