



# Charter Review

## Form of Government Subcommittee Agenda

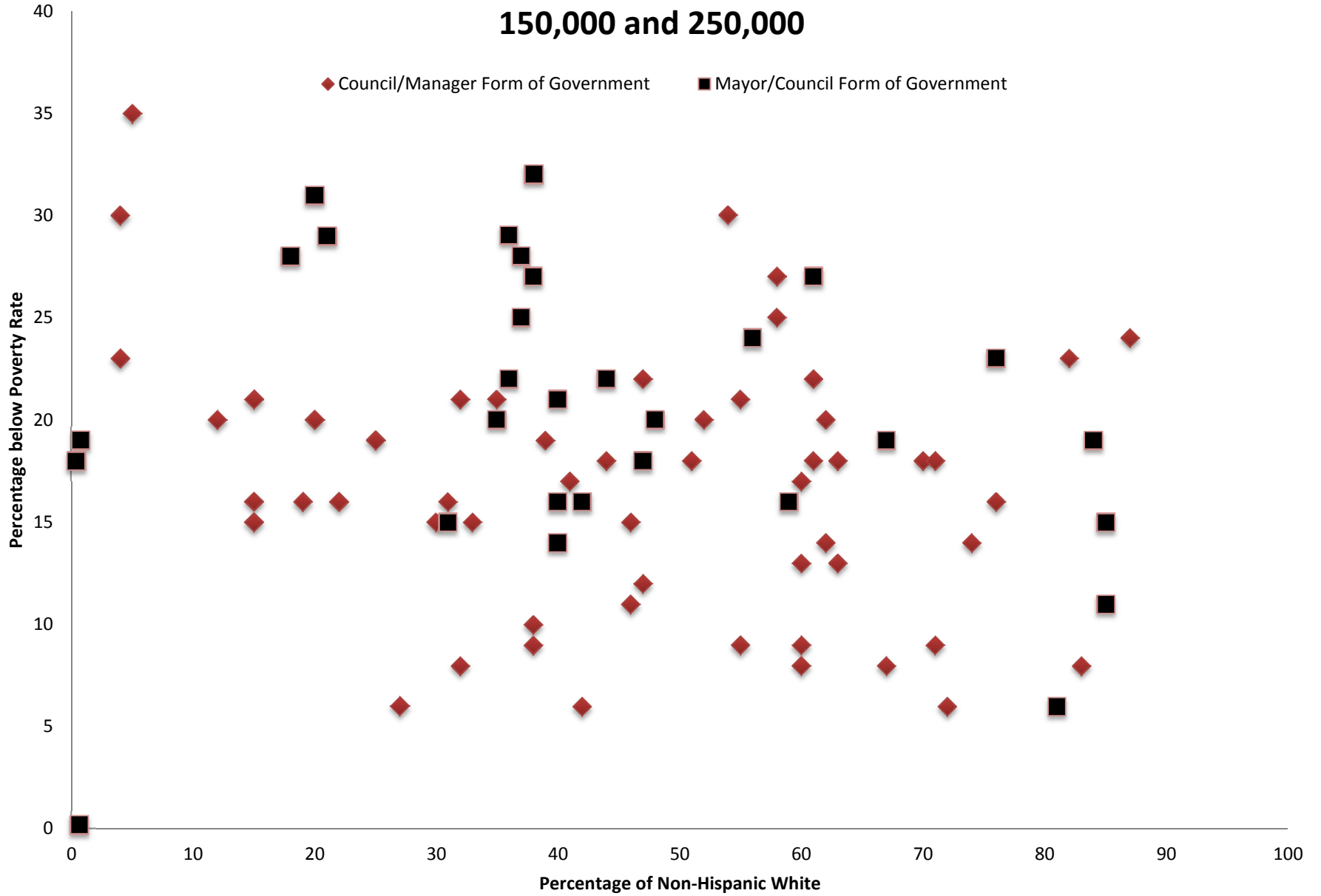
Tacoma Municipal Building North, 733 Market Street, Room 12  
[www.cityoftacoma.org/charterreview](http://www.cityoftacoma.org/charterreview)

March 17, 2014 – 5:30 p.m.

1. Call to Order
2. Roll Call
3. Approval of the Minutes of the March 10, 2014 Meeting
5. Criteria Presentations
6. Public Comment
7. Committee Comments
8. Adjournment

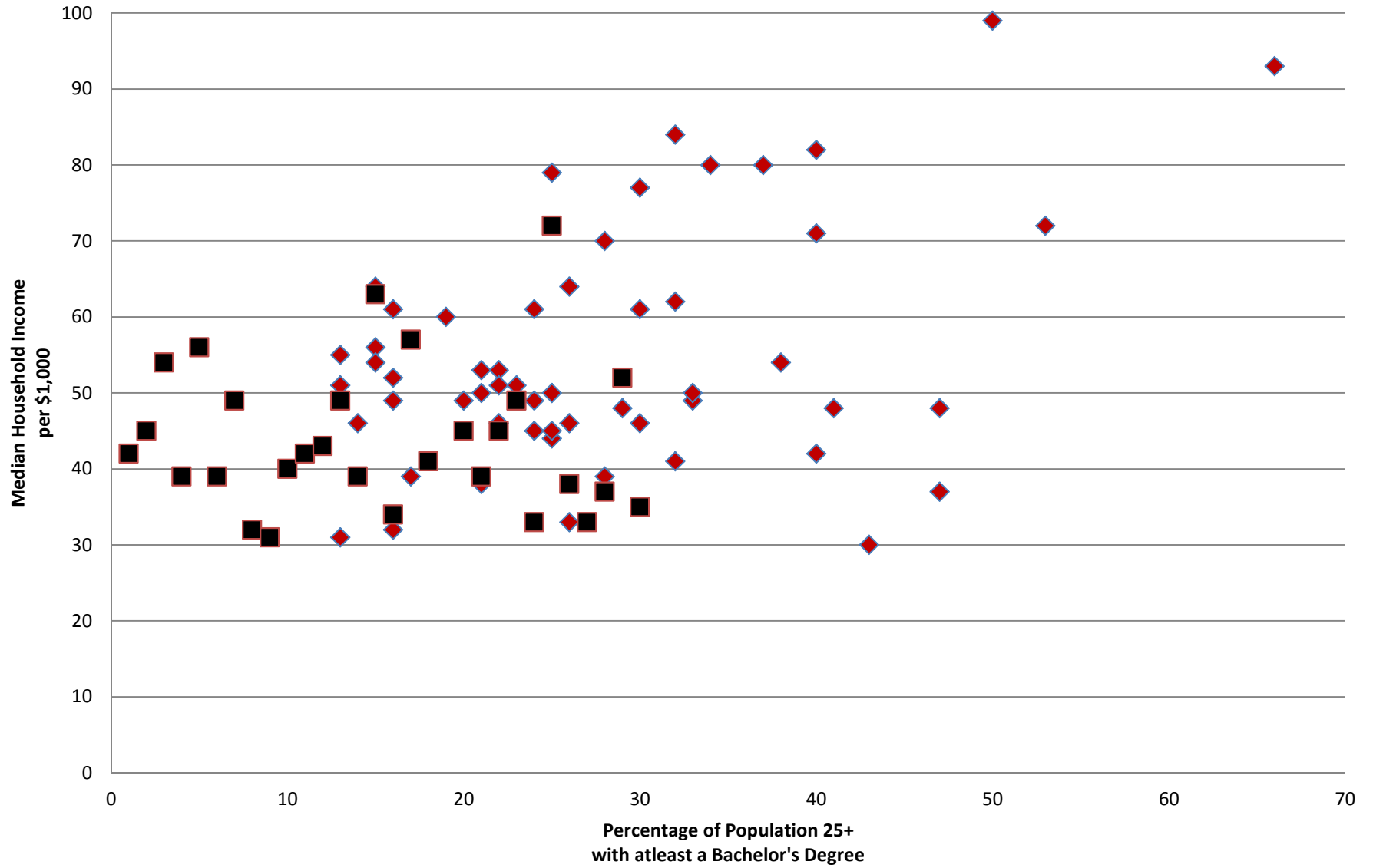


# Cities with populations between 150,000 and 250,000



# Education Attainment

◆ Council/Manager Form of Government    ■ Mayor/Council Form of Government



Excerpt from the Form of Government in the 200 Largest U.S. Cities

City/State	2013 Population (000s)	Form of Government	Felonies Per 100,000 Population	S&P Bond Rating	Median Age	% Non-Hispanic White	Ed Attainment	median household income	Change 2000-2010	Below poverty	ICMA member?
the next 84 cities have populations between 250,000 and 150,000; 55 of them - 66% - have the council/manager form of government											
Orlando FL	238	strong mayor			34	40%	28%	\$42	+28	18	12 incl deputy cao
St Petersburg FL	247	strong mayor			43	64%	28	45	-1.4	16%	11
Norfolk VA	246	<b>council/manager</b>			<b>29.5</b>	<b>44</b>	<b>25</b>	<b>44</b>	<b>+3.6</b>	<b>18</b>	<b>78</b>
Chandler AZ	246	<b>council/manager</b>			<b>35</b>	<b>60</b>	<b>40</b>	<b>71</b>	<b>+4</b>	<b>9</b>	<b>42</b>
Laredo TX	245	<b>council/manager</b>			<b>26.25</b>	<b>4</b>	<b>17</b>	<b>39</b>		<b>30</b>	<b>12 [not cm]</b>
Madison WI	240	strong mayor			31	76%	48% over 25 BA	54	+12%	19	27
Durham NC	239	<b>council/manager</b>			<b>32</b>	<b>39</b>	<b>47</b>	<b>48</b>		<b>19</b>	
Lubbock TX	236	<b>council/manager</b>			<b>29.25</b>	<b>55</b>	<b>43</b>	<b>30</b>	<b>+4</b>	<b>21</b>	
Winston-Salem NC	234	<b>council/manager</b>			<b>35</b>	<b>47</b>	<b>32</b>	<b>41</b>	<b>24</b>	<b>22</b>	
Garland TX	234	<b>council/manager</b>			<b>32</b>	<b>33</b>	<b>22</b>	<b>\$53</b>	<b>+5</b>	<b>15</b>	
Glendale AZ	232	<b>council/manager</b>			<b>30.75</b>	<b>51</b>	<b>22</b>	<b>\$51</b>	<b>4</b>	<b>18</b>	
Hialeah FL	232	<b>council/manager</b>			<b>38</b>	<b>4</b>	<b>13</b>	<b>31</b>	<b>3</b>	<b>23</b>	
Reno NV	231	<b>council/manager</b>			<b>35</b>	<b>63</b>	<b>29</b>	<b>48</b>	<b>25</b>	<b>18</b>	

Excerpt from the Form of Government in the 200 Largest U.S. Cities

City/State	2013 Population (000s)	Form of Government	Felonies Per 100,000 Population	S&P Bond Rating	Median Age	% Non-Hispanic White	Ed Attainment	median household income	Change 2000-2010	Below poverty	ICMA member?
Baton Rouge LA	230	strong mayor			30	37	33	39	1	25	
Irvine CA	230	<b>council/manager</b>			<b>34</b>	<b>46</b>	<b>66</b>	<b>93</b>		<b>11</b>	
Chesapeake VA	228	<b>council/manager</b>			<b>35</b>	<b>60</b>	<b>28</b>	<b>70</b>	<b>7</b>	<b>8</b>	
Irving TX	225	<b>council/manager</b>			<b>30.4</b>	<b>31</b>	<b>33</b>	<b>49</b>		<b>16</b>	
Scottsdale AZ	224	<b>council/manager</b>			<b>40</b>	<b>83</b>	<b>53</b>	<b>72</b>	<b>7</b>	<b>8</b>	
North Las Vegas NV	224	strong mayor			31	31	15	\$56		15	
Fremont CA	222	<b>council/manager</b>			<b>29</b>	<b>27</b>	<b>50</b>	<b>99</b>	<b>6</b>	<b>6</b>	
Gilbert AZ	221	<b>council.manager</b>			<b>30.25</b>	<b>72</b>	<b>37</b>	<b>80</b>	<b>90</b>	<b>6</b>	
San Bernardino CA	213	strong mayor			29	20	12	39		31	
Boise ID	212	strong mayor			35	85	37	49	11	15	
Birmingham AL	212	strong mayor			34	21	22	32	-13	29	
Rochester NY	211	strong mayor			31	38	25	31	-4	32	
Richmond VA	210	strong mayor			34	38	34	40	3	27	
Spokane WA	210	strong mayor			35	84	29	42	7	19	
Des Moines IA	207	<b>council/manager</b>			<b>34</b>	<b>70</b>	<b>25</b>	<b>\$45</b>	<b>2</b>	<b>18</b>	
Montgomery AL	205	strong mayor			34	36	31	43	2	22	

Excerpt from the Form of Government in the 200 Largest U.S. Cities

City/State	2013 Population (000s)	Form of Government	Felonies Per 100,000 Population	S&P Bond Rating	Median Age	% Non-Hispanic White	Ed Attainment	median household income	Change 2000-2010	Below poverty	ICMA member?
Modesto CA	204	strong mayor			34	48	18	49	7	20	
Fayetteville NC	202	<b>council/manager</b>			<b>32</b>	<b>41</b>	<b>24</b>	<b>45</b>		<b>17</b>	
Tacoma WA	202	<b>council/manager</b>			<b>35</b>	<b>61</b>	<b>25</b>	<b>50</b>	<b>3</b>	<b>18</b>	
Shreveport LA	202	strong mayor			35	40	24	39		21	
Fontana CA	202	<b>council/manager</b>			<b>28</b>	<b>15</b>	<b>15</b>	<b>64</b>		<b>15</b>	
Oxnard CA	202	<b>council/manager</b>			<b>30</b>	<b>15</b>	<b>16</b>	<b>61</b>		<b>16</b>	
Aurora IL	200	strong mayor			29	40	31	63		14	
Moreno Valley CA	200	<b>council/manager</b>			<b>29</b>	<b>20</b>	<b>15</b>	<b>\$56</b>		<b>20</b>	
Akron OH	199	strong mayor			36	61	20	34		27	
Yonkers NY	199	strong mayor			38	42	29	57		16	
Columbus GA	198	strong mayor			33	40	22	41		16	
Augusta GA	198	strong mayor			33	35				20	
Little Rock AR	197	strong mayor			34	47	38	45		18	
Amarillo TX	195	<b>council/manager</b>			<b>33.5</b>	<b>60</b>	<b>22</b>	<b>46</b>		<b>17</b>	
Mobile AL	195	strong mayor			36	44	26	39		22	
Huntington Beach CA	195	<b>council/manager</b>			<b>40</b>	<b>67</b>	<b>40</b>	<b>82</b>		<b>8</b>	
Glendale CA	195	<b>council/manager</b>			<b>41</b>	<b>63</b>	<b>38</b>	<b>\$54</b>		<b>13</b>	

Excerpt from the Form of Government in the 200 Largest U.S. Cities

City/State	2013 Population (000s)	Form of Government	Felonies Per 100,000 Population	S&P Bond Rating	Median Age	% Non-Hispanic White	Ed Attainment	median household income	Change 2000-2010	Below poverty	ICMA member?
Grand Rapids MI	190	council/manager			31	58	28	39		27	
Salt Lake City UT	189	strong mayor			30	67	41	45		19	
Tallahassee FL	187	council/manager			31.5	54	47	37		30	
Huntsville AL	184	strong mayor			37	59	38	49		16	
Worcester MA	183	council/manager			33.5	62	30	46		20	
Knoxville TN	182	strong mayor			33	76	30	33		23	
Grand Prairie TX	182	council/manager			30	30	21	53		15	
Newport News VA	181	council/manager			32	46	23	51		15	
Brownsville TX	180	council/manager			27.25	5	16	\$32		35	
Santa Clarita CA	179	council/manager			36	55	32	84		9	
Overland Park KS	179	strong mayor			38	81	57	72		6	
Providence RI	178	strong mayor			29	37	28	38		28	
Jackson MS	175	strong mayor			31	18	26	33		28	
Garden Grove CA	174	council/manager			36	22	19	60		16	
Oceanside CA	171	council/manager			35	47	24	61		12	
Chattanooga	171	strong mayor			38	56	26	37		24	

Excerpt from the Form of Government in the 200 Largest U.S. Cities

City/State	2013 Population (000s)	Form of Government	Felonies Per 100,000 Population	S&P Bond Rating	Median Age	% Non-Hispanic White	Ed Attainment	median household income	Change 2000-2010	Below poverty	ICMA member?
TN											
Ft Lauderdale FL	171	council/manager			38.75	52	33	50		20	
Rancho Cucamonga CA	171	council/manager			35	42	30	\$77		6	
Santa Rosa CA	171	council/manager			37	60	30	61		13	
Port St Lucie FL	169	council/manager			44.5	62	20	49		14	
Ontario CA	167	council/manager			30	19	13	55		16	
Tempe AZ	167	council/manager			29	61	41	48		22	
Vancouver WA	166	council/manager			36	76	24	49		16	
Springfield MO	162	council/manager			33	87	26	33		24	
Cape Coral FL	161	council/manager			40	74	21	50		14	
Pembroke Pines FL	160	council/manager			36	32	32	62		8	
Sioux Falls SD	160	strong mayor			34	85	32	52		11	
Peoria AZ	160	council/manager			36	71	26	64		9	
Lancaster CA	159	council/manager			30	35	16	52		21	
Elk Grove CA	159	council/manager			34	38	34	80		9	
Corona CA	158	council/manager			33	38	25	79		10	



Excerpt from the Form of Government in the 200 Largest U.S. Cities

City/State	2013 Population (000s)	Form of Government	Felonies Per 100,000 Population	S&P Bond Rating	Median Age	% Non-Hispanic White	Ed Attainment	median household income	Change 2000-2010	Below poverty	ICMA member?
Eugene OR	158	council/manager			34	82	40	42		23	
Salem OR	157	council/manager			35	71	26	46		18	
Palmdale CA	156	council/manager			30	25	15	54		19	
Salinas CA	155	council/manager			29	15	13	51		21	
Springfield MA	154	strong mayor			32	36	17	35		29	
Pasadena TX	153	council/manager			29.5	32	14	46		21	
Rockford IL	151	council/manager			36	58	21	38		25	
Pomona CA	151	council/manager			30	12	16	49		20	

sources:

population: U.S. Census, 2013 est.

form of government: city web sites

felonies: U.S. Department of Justice, 2009

bond ratings: S&P, 2010.4