

Port of Tacoma Road Reconstruction Project

June 2015 to December 2015

The City of Tacoma will reconstruct Port of Tacoma Road from East 11th Street to Marshall Avenue with concrete to meet heavy-haul corridor standards.

The City's contractor, Gary Merlino Construction Company, Inc., will remove 7,800 feet of asphalt and replace it with 10 inches of concrete.

The \$9 million project will also install permanent traffic signals at the Washington United Terminals gate and the intersection of Port of Tacoma Road and Lincoln Avenue.

Truck staging during construction

Construction will change how trucks stage for Husky Terminal and Olympic Container Terminal.

- The new staging areas are expected to open the week of **June 15**.
- Staging will **open at 6 a.m.**
- A new Overflow Staging Area will be established at the corner of Thorne Road and East 11th Street.

See attached maps for Husky and OCT staging and suggested truck routes for Husky, OCT and Washington United Terminals.

Construction work hours

The City's contractor will complete the work on Port of Tacoma Road in phases.

During most of the project, the road will have at least two lanes of traffic open between 6 a.m. and 6 p.m. Monday through Friday.



Full closures of sections of the road may happen at night or on weekends. A six-week full road closure between the WUT gate and Lincoln Avenue is expected in early July.

Detour routes will be posted online at the City of Tacoma and Port of Tacoma websites.

Subscribe to construction updates

Text alerts: Text [PORT ROADWORK](#) to [468311](#) (message and data rates apply)

Email alerts: Text [PORT ROADWORK](#) and your [email address](#) to [468311](#)

Detour routes & staging area maps

Staging for Husky and OCT will change during construction.

- Trucks for both terminals will stage on East 11th Street and in a new Overflow Staging Area at the corner of Thorne Road and East 11th Street
- Signage will specify if Husky or OCT trucks should use the Overflow Staging Area (text alerts may also be sent)
- All staging areas are expected to open June 15. No staging will be allowed before 6 a.m.

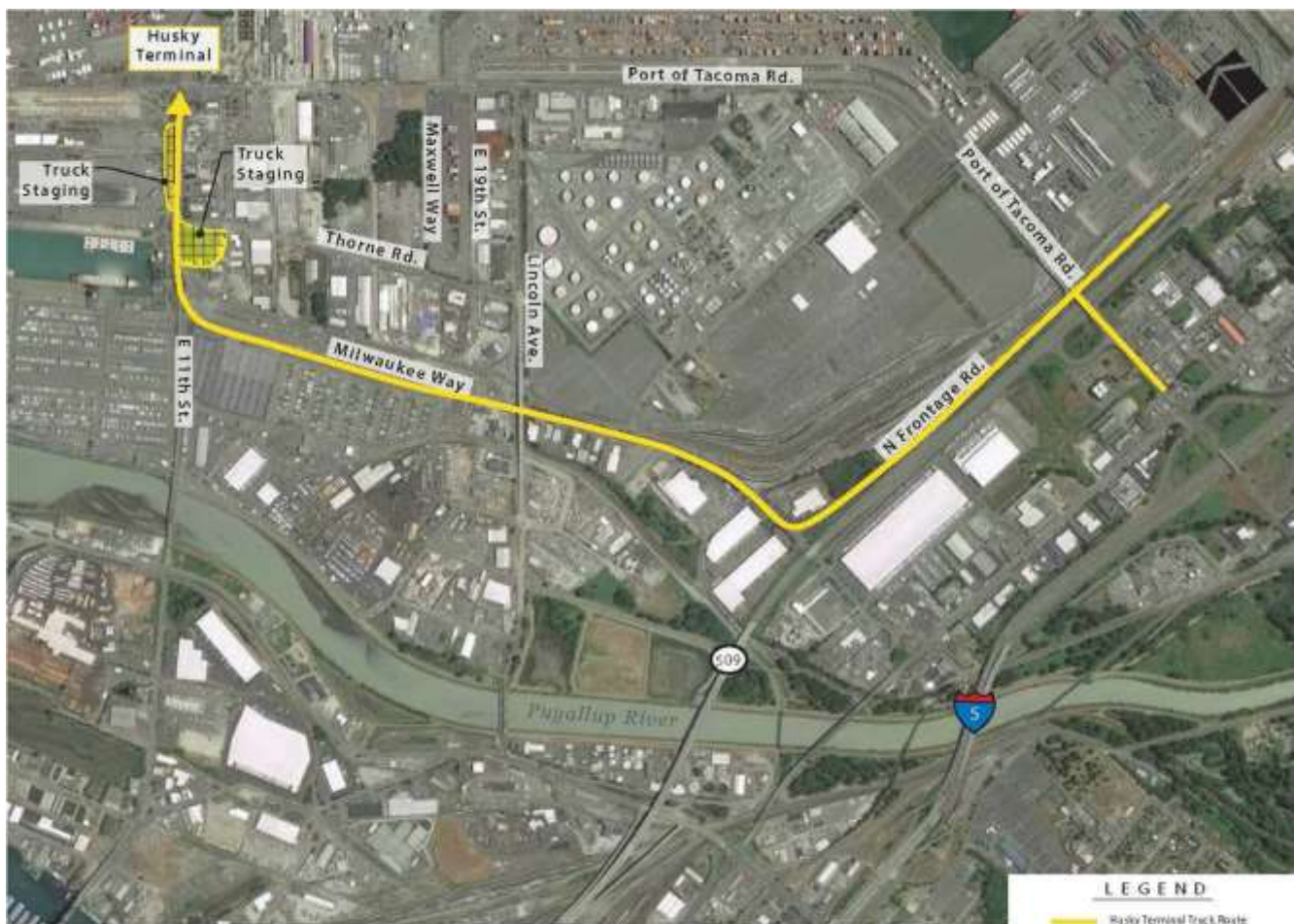
The maps on the following pages show suggested routes to access Husky, OCT and WUT.

Terminal 7 breakbulk cargo

- Continue to stage on Port of Tacoma Road

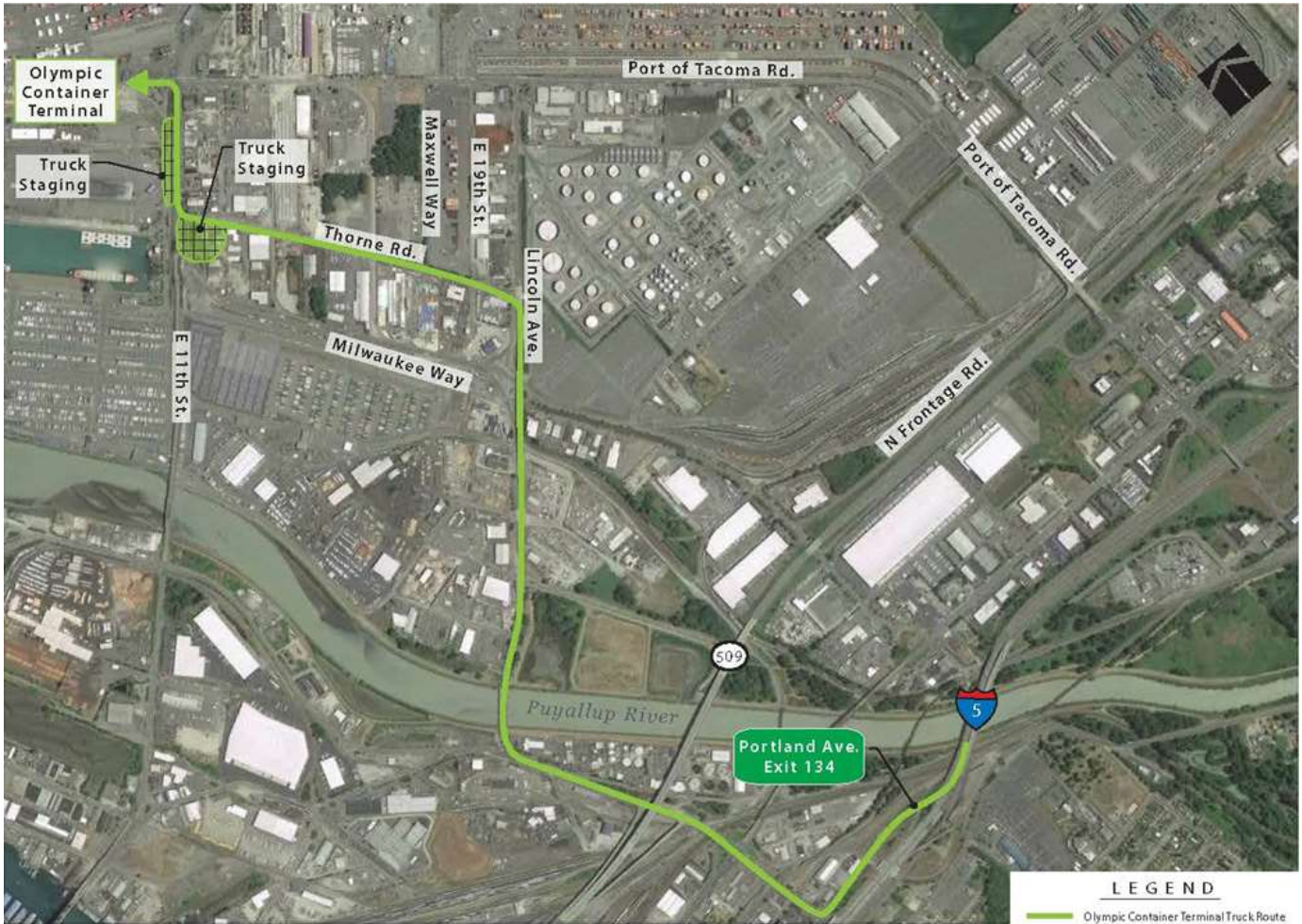
Husky Terminal

- Stage on East 11th Street (see map on Page 3) – **expected to open the week of June 15**
- Use the Overflow Staging Area when directed by signage (text alerts may also be sent)
- No staging before 6 a.m.



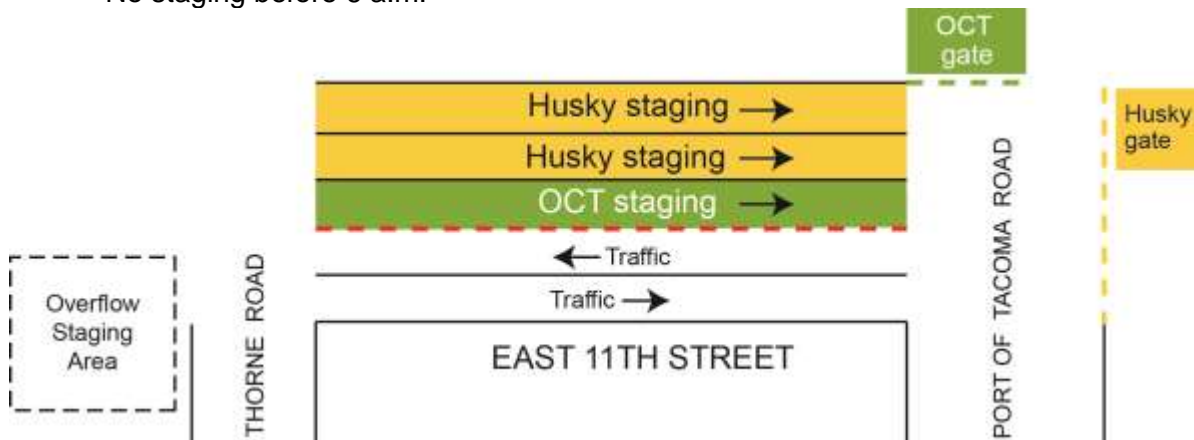
Olympic Container Terminal (OCT)

- Stage on East 11th Street (see detail map) – **expected to open the week of June 15**
- Use the Overflow Staging Area when directed by signage (text alerts may also be sent)
- No staging before 6 a.m.



Truck staging for Husky & OCT – expected to open the week of June 15

- Use the Overflow Staging Area when directed by signage (text alerts may also be sent)
- No staging before 6 a.m.



Washington United Terminals (WUT)

- Trucks continue to stage in Lot F (across from the WUT gate)
- No staging before 6 a.m



Stay informed

The City of Tacoma will post weekly updates and detour route information on its website at https://www.cityoftacoma.org/government/city_departments/public_works/engineering/construction_projects/port_of_tacoma_road.

The Port will also share this information on its website at www.portoftacoma.com/road-construction.

Who to contact

The City of Tacoma is managing the project. For questions and concerns, contact:

- Tom Rutherford, City project manager, at (253) 591-5767 or trutherford@cityoftacoma.org
- Phill Ringrose, City construction manager, at (253) 591-5502 or pringrose@cityoftacoma.org