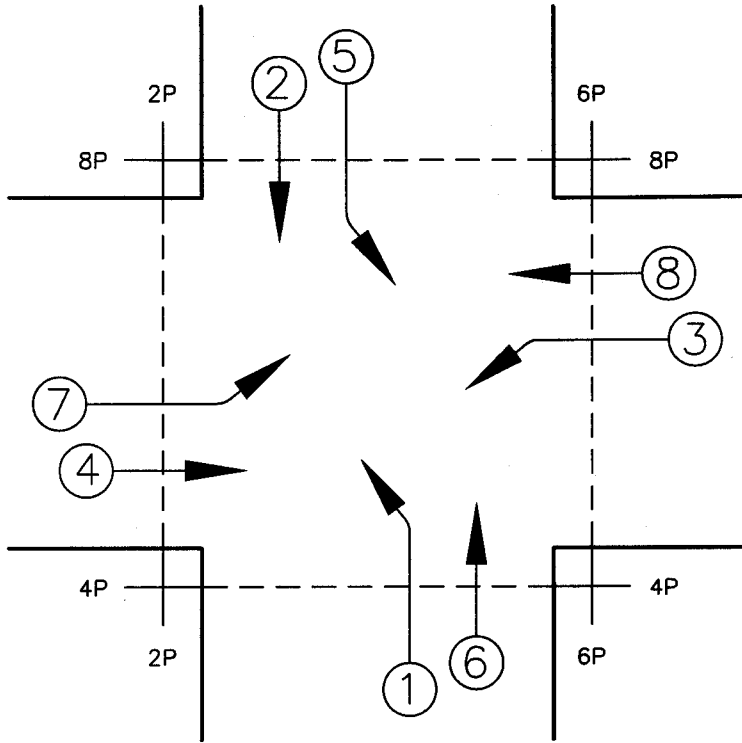
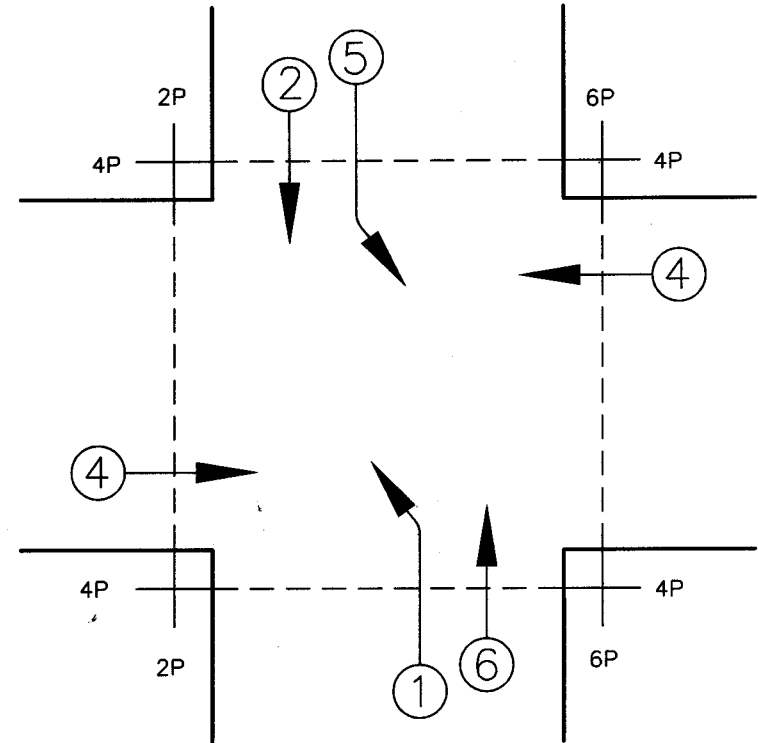


"P" CABINET



"M" CABINET



PEDESTRAIN SIGNAL WIRING

RED N/S - DW
 GREEN N/S - WK
 ORANGE E/W - DW
 BLACK E/W - WK
 WHITE NEUTRAL

PEDESTRAIN PUSH BUTTON WIRING

RED N/S
 GREEN SPARE
 ORANGE SPARE
 *BLACK E/W
 WHITE COMM BETWEEN PUSH BUTTONS

*BLACK USED WHEN ONLY ONE PUSH BUTTON IS USED FOR CROSSING EITHER STREET.

CITY OF TACOMA
 DEPARTMENT OF PUBLIC WORKS

APPROVED FOR PUBLICATION

CITY ENGINEER

DATE

TRAFFIC SIGNAL
 PHASE ORIENTATION

STANDARD PLAN NO. TS-15