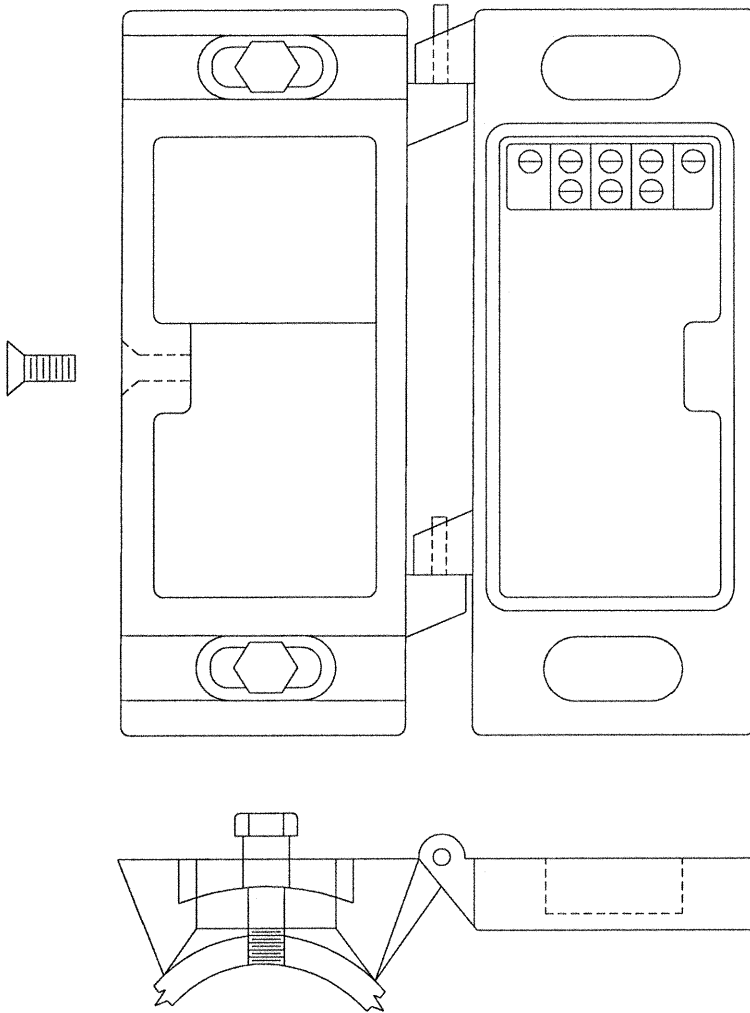


POLE HALF

SIGNAL HALF



**MATERIAL:**

CAST ALUMINUM ALLOY

**STANDARD PAINT FINISHES:**

DARK OLIVE GREEN

**DIMENSIONS:**

11-1/4" H MAXIMUM x5-1/2" W MAXIMUM x2-3/4 D MAXIMUM

**WEIGHT:**

TOTAL WEIGHT SHALL NOT EXCEED 7-1/2 LBS.

**CONSTRUCTION:**

THE CLAMSHELL CONSISTS OF A TWO PART MOUNTING ASSEMBLY. THE HINGE PINS ON THE POLE MOUNTED HALF SHALL BE STAINLESS STEEL AND FIT INTO THE EARS ON THE SIGNAL MOUNTED HALF.

**MOUNTING:**

THE POLE HALF OF THE ASSEMBLY SHALL BE DESIGNED TO FIT THE CURVATURE OF POLES 4" IN DIAMETER AND LARGER.

THE CLAMSHELL SHALL BE MECHANICALLY DESIGNED TO ALLOW FOR VARIOUS TYPES OF MOUNTING SUCH AS BANDING, THRU-BOLT OR LAG SCREW MOUNTING. THE BOLT HOLES SHALL BE ELONGATED HORIZONTALLY TO ALLOW FOR ROTATION ON THE POLE.

THE SIGNAL HALF OF THE ASSEMBLY SHALL BE SECURED TO THE POLE HALF THROUGH USE OF A FLATHEAD SOCKET BOLT AND TIGHTENED USING A 3/16" ALLEN WRENCH.

THE POLE HALF SHALL BE MOUNTED TO THE STRAIN POLE USING BOLTS EXCEPT AS DIRECTED BY THE ENGINEER.

THE BOTTOM OF THE PEDESTRIAN SIGNAL HEAD SHALL BE 8' ABOVE THE FINISHED SIDEWALK GRADE.

**WIRING:**

THE FIELD WIRING SHALL BE TERMINATED ON A HORIZONTALLY MOUNTED 3 POSITION TERMINAL BLOCK LOCATED IN THE UPPER HALF OF THE SIGNAL HALF.

**MISCELLANEOUS:**

A NEOPRENE GASKET WILL PROVIDE A RAIN-TIGHT SEAL

DRILL AND TAP HOLE IN STEEL POLE FOR 3/4" INSULATED CHASE NIPPLE FOR WIRING.

CITY OF TACOMA  
DEPARTMENT OF PUBLIC WORKS

APPROVED FOR PUBLICATION

CITY ENGINEER



2/12/03

DATE 2/4/03

PEDESTRIAN SIGNAL  
CLAMSHELL POLE  
MOUNTING DETAIL

STANDARD PLAN NO. TS-12