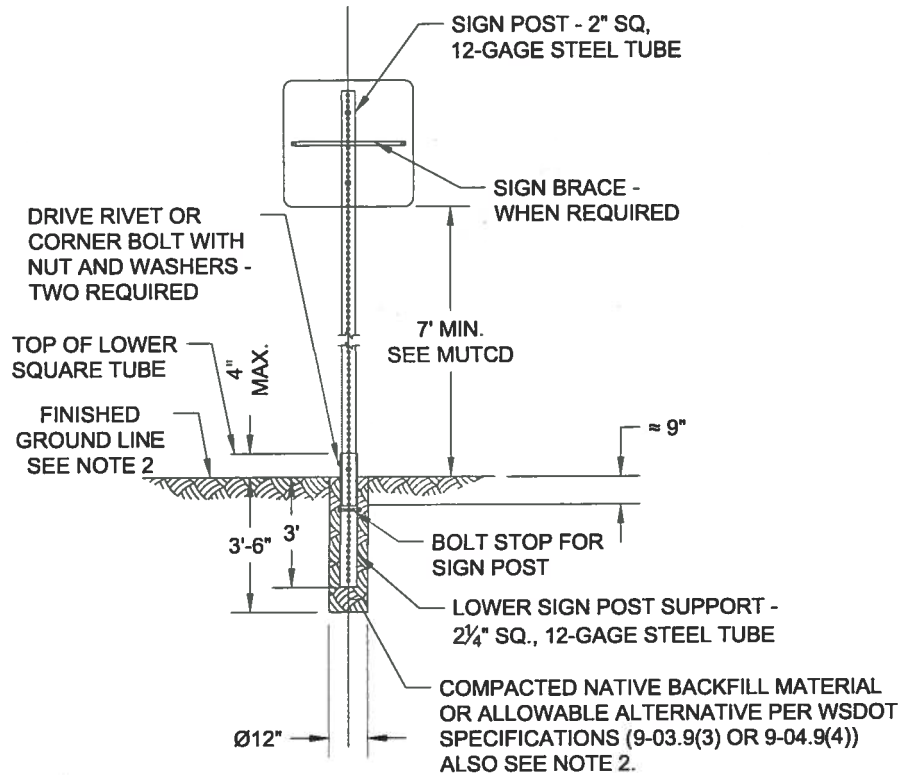
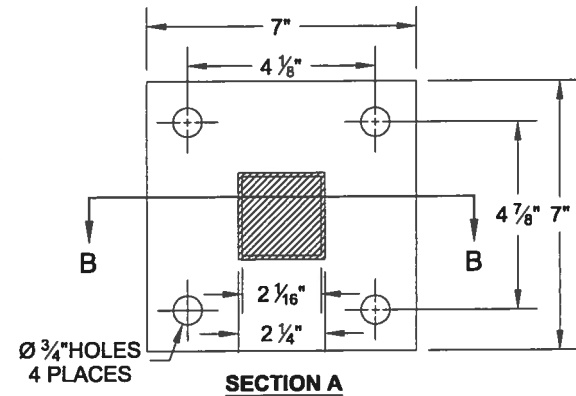
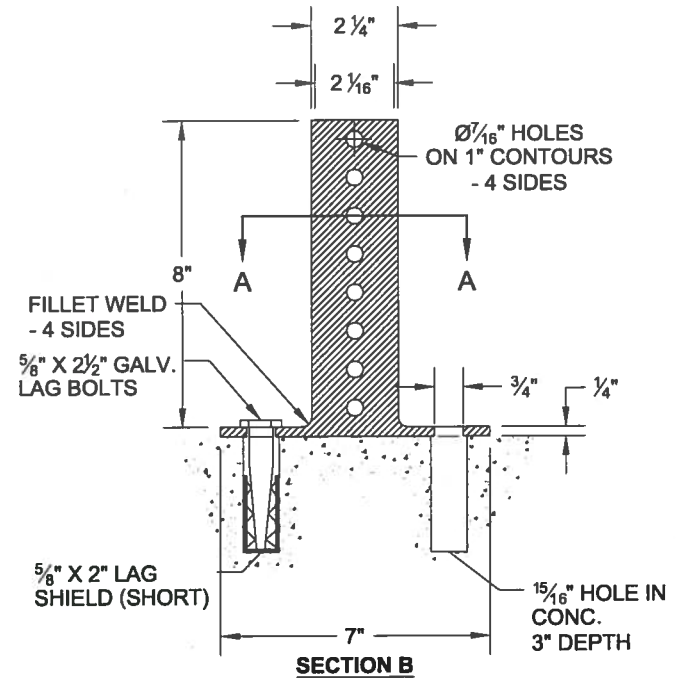


NOTES:

1. Surface mounting of sign posts, especially within traffic islands or medians, is only allowable with special authorization from the city's traffic engineering group, (Exception: Surface mounting of flexible post object markers within islands or medians is permitted).
2. If finished ground line is a hard surface, then compacted native backfill material shall be concrete with the top of foundation being smooth, dense, and uniform to finished ground line.



**SIGN SUPPORT DETAIL
FOR STEEL SIGN POST**



**BASE PLATE DETAIL FOR
STEEL SIGN POST SURFACE MOUNTING
(SEE NOTE 1)**

<p>DCS PUBLIC WORKS</p> <p>NA TACOMA POWER</p>	<p>REVIEWED BY <i>Gms</i></p> <p>ENVIRONMENTAL SERVICES</p> <p>NA TACOMA WATER</p>		<p>APPROVED FOR PUBLICATION</p> <p><i>[Signature]</i></p> <p>CITY ENGINEER</p>	<p>CITY OF TACOMA</p> <p>SIGN POST INSTALLATION</p> <p>STANDARD PLAN NO. SU-34</p>
			<p>DATE 4/4/11</p>	