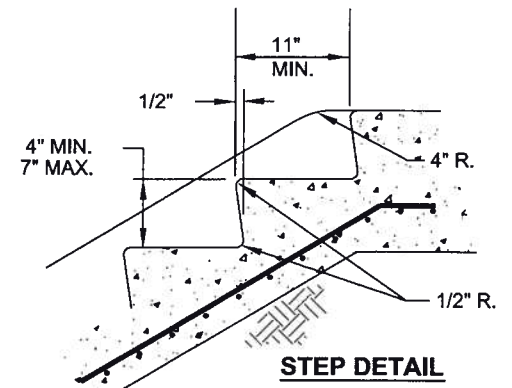
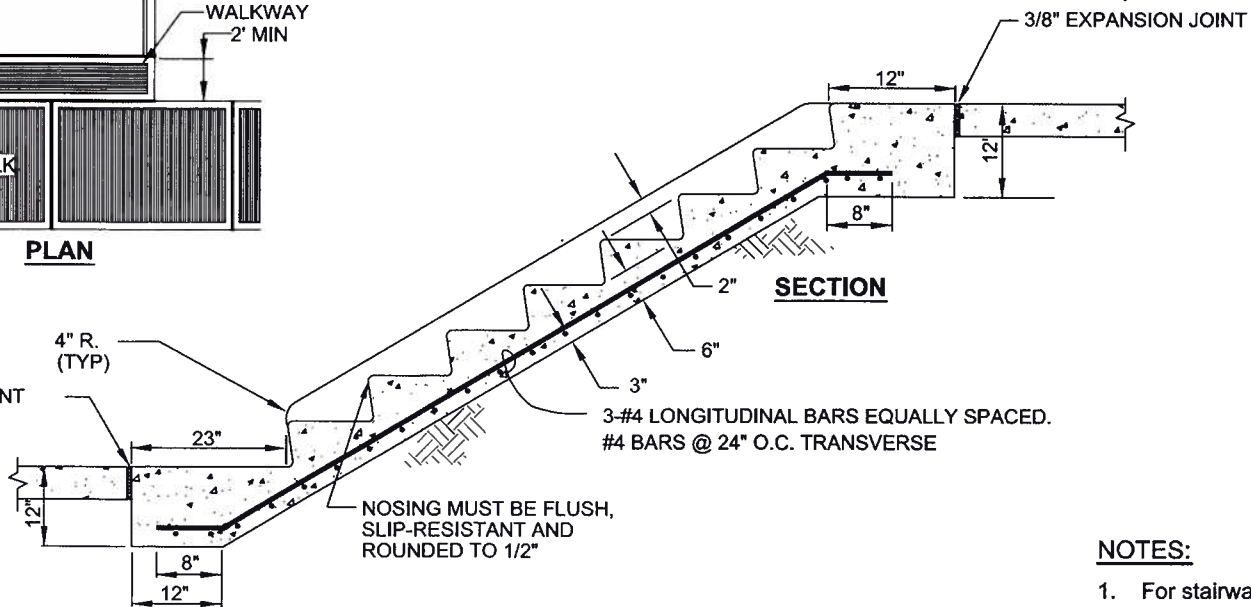


**PLAN**



**STEP DETAIL**



**SECTION**

**NOTES:**

1. For stairway handrail details, refer to Standard Plan No. SU-11.
2. Concrete shall be a minimum compressive strength of 3,000 PSI.

CITY OF TACOMA  
DEPARTMENT OF PUBLIC WORKS

APPROVED FOR PUBLICATION

*[Signature]*  
CITY ENGINEER

11/23/15  
DATE

CEMENT CONCRETE STAIRWAY

STANDARD PLAN NO. SU-10