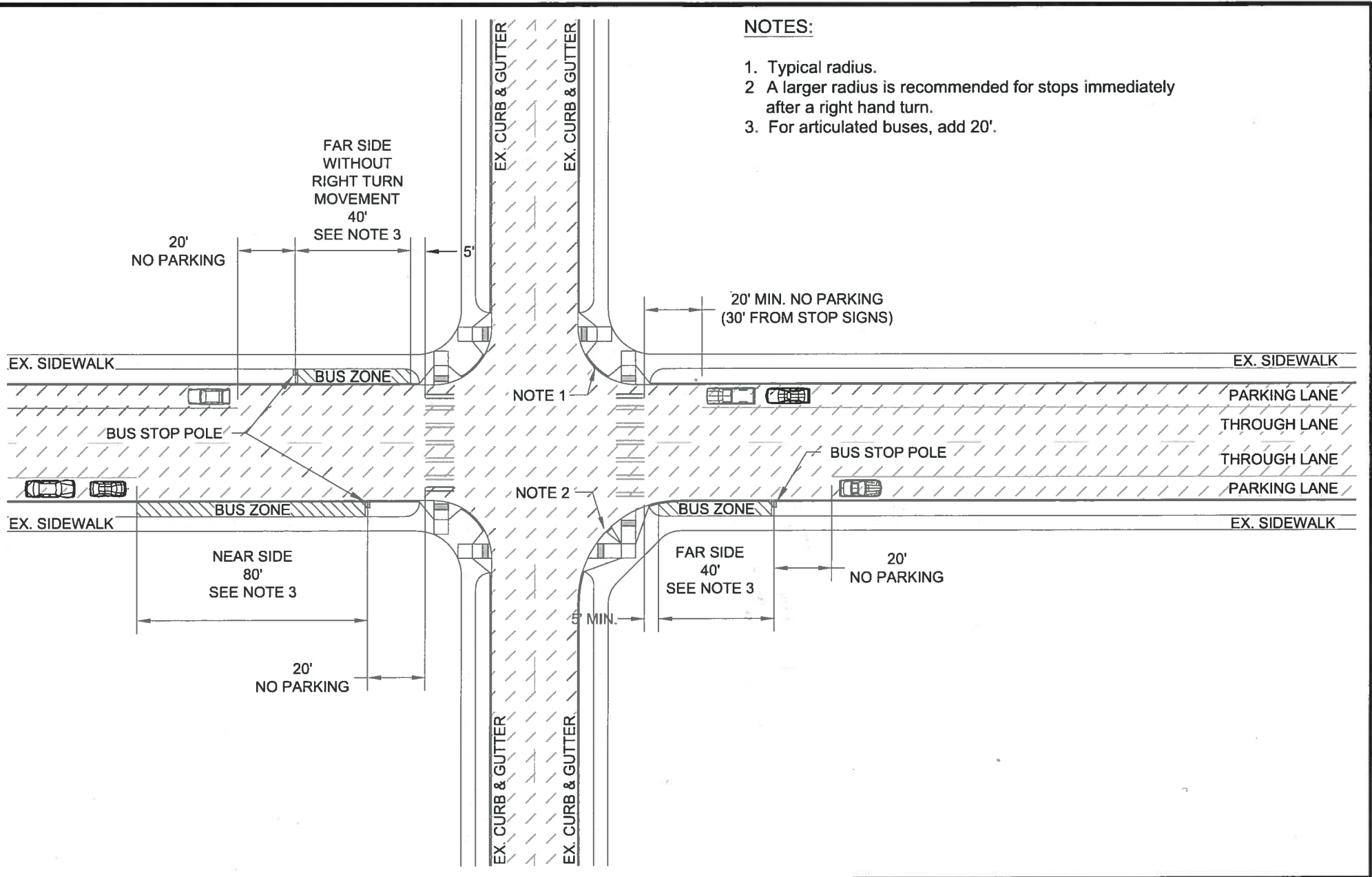


**NOTES:**

1. Typical radius.
2. A larger radius is recommended for stops immediately after a right hand turn.
3. For articulated buses, add 20'.



**REVIEWED BY**  
 PUBLIC WORKS  
 ENVIRONMENTAL SERVICES  
 TACOMA POWER  
 TACOMA WATER



**APPROVED FOR PUBLICATION**  
 CITY ENGINEER  
 DATE 4/4/14

**CITY OF TACOMA**  
**BUS STOP WITH PARKING LANE**  
 STANDARD PLAN NO. MISC-02