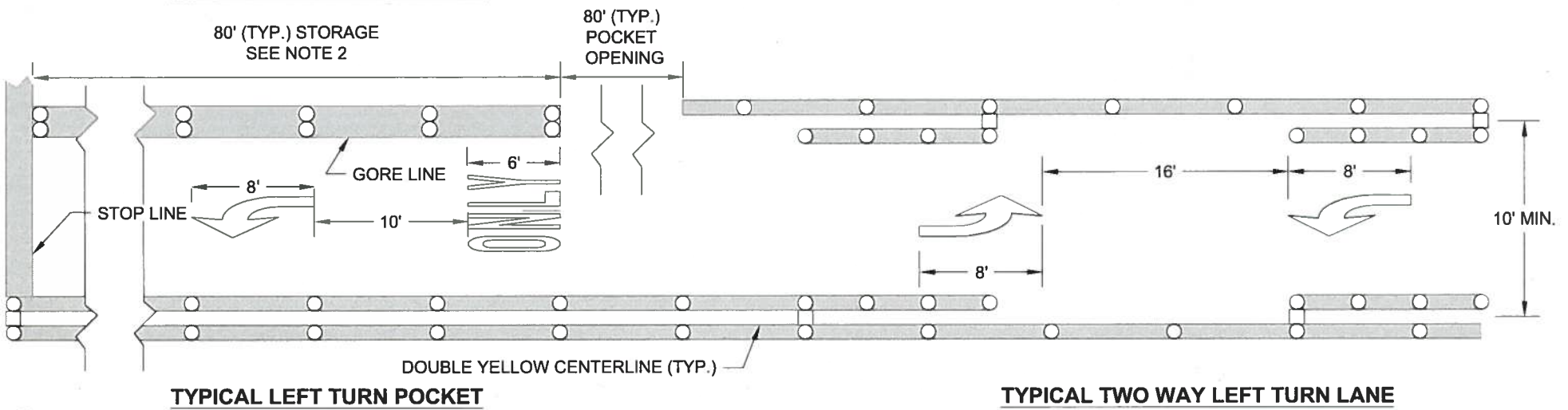
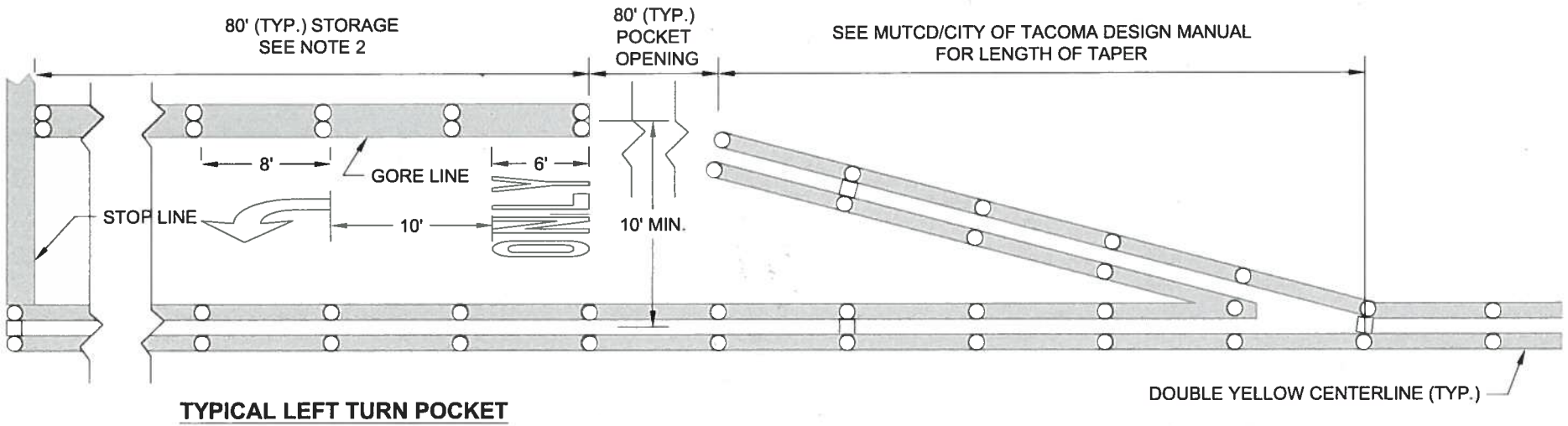


**NOTES:**

1. Contractor will provide necessary control points to assist in preliminary spotting for striping, stop line, legends, crosswalks, traffic arrows, and associated signs.
2. If storage length is 100 feet or greater, then a second arrow, (without "only"), to be placed at 22 feet from stop line to near edge of the arrow.
3. Use of RPMs as shown correspond with paint striping. If striping consists of thermoplastic (or similar) then type 1Y/W-RPMs are omitted.



REVIEWED BY

DCS  
PUBLIC WORKS

ENVIRONMENTAL SERVICES  
TACOMA WATER

NA  
TACOMA POWER



APPROVED FOR PUBLICATION

CITY ENGINEER

DATE 2/2/16

CITY OF TACOMA

LEFT TURN POCKET  
PAVEMENT MARKINGS

STANDARD PLAN NO. CH-09