

# **2015 Comprehensive Plan Update**

City of Tacoma

Planning and Development Services

**City Council Study Session**

**December 9, 2014**



# Overview

- Background
- Project Approach
- Key Opportunities
- Public Outreach and Engagement



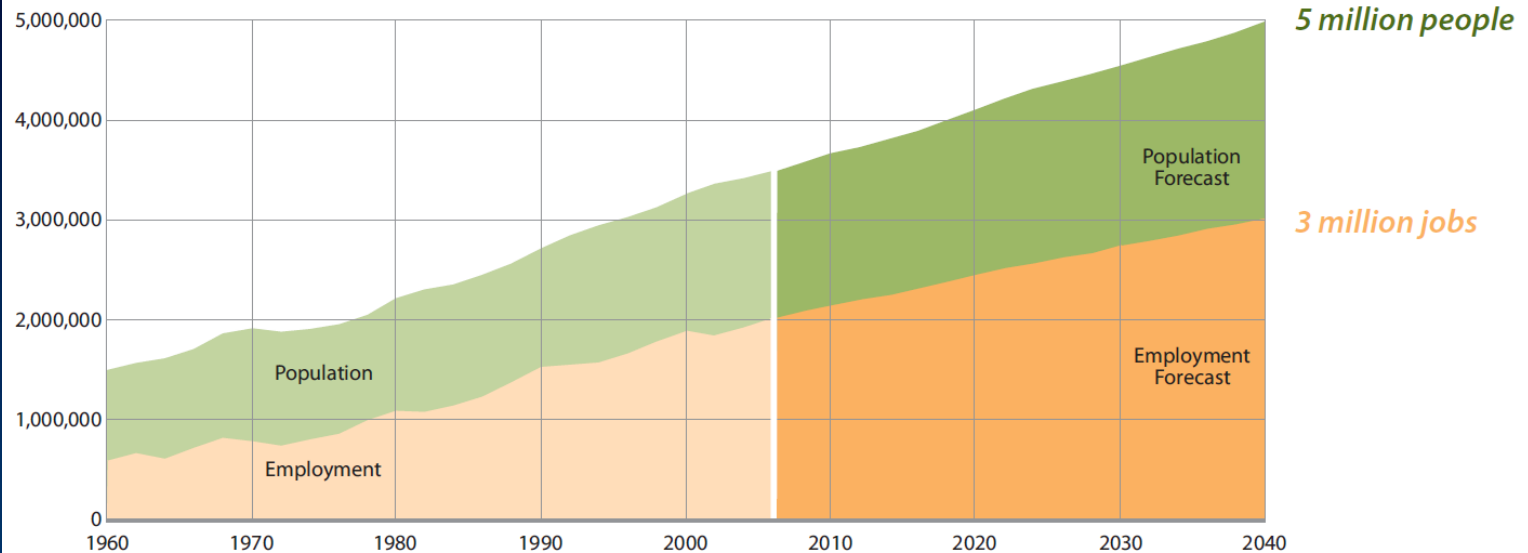
# Background

- Growth Management Act Periodic Review
- Community trends and growth targets
- Incorporate/address new statutes, regional policy, local initiatives



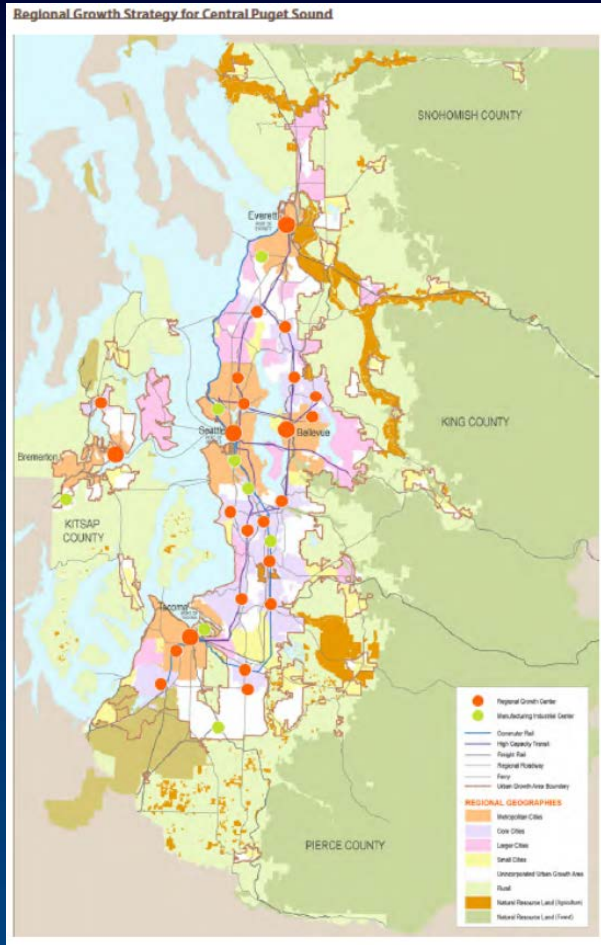
# Regional Growth Forecast

## Historic and Forecast Growth



Source: PSRC

# Regional Strategy



- Metropolitan Cities
- Growth Centers

# Implications for Tacoma

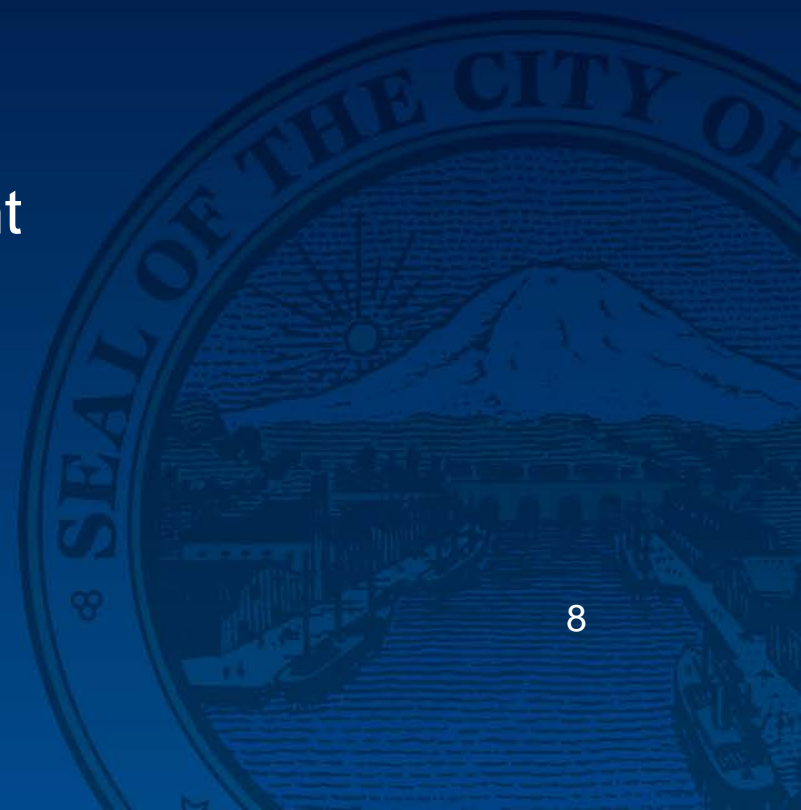
- 2040 Population and Employment Allocations
  - Additional 127,000 residents
  - Additional 90,000 jobs
- Countywide Growth Targets for Tacoma
- Buildable Lands Analysis

# Implications for Tacoma

- Expect Change
  - Increasing density
- Housing Mix
  - New housing will be predominantly multifamily
- Transportation
  - Necessity of a multi-modal system
- Environment
  - Adapting to climate change and growth pressures

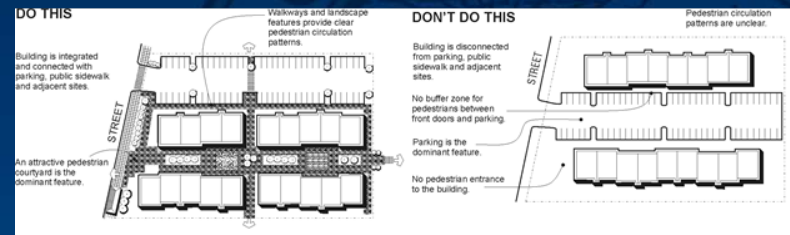
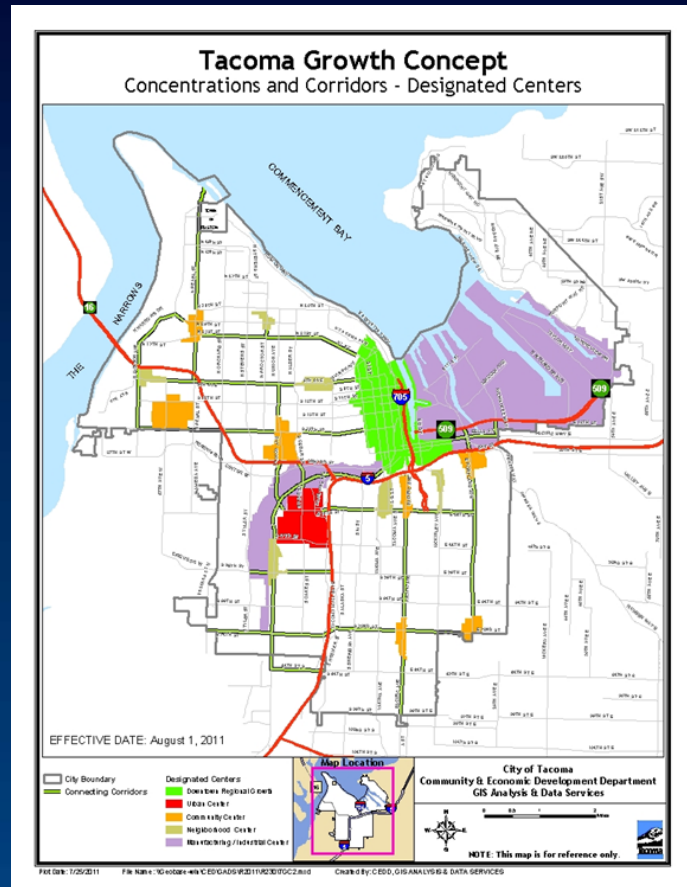
# Strategic Plan

- Health and Safety
- Human and Social Needs
- Economic Vibrancy and Employment
- Education and Learning
- Arts and Cultural Vitality
- Built and Natural Environment
- Government Performance





# Urban Design



# Urban Design

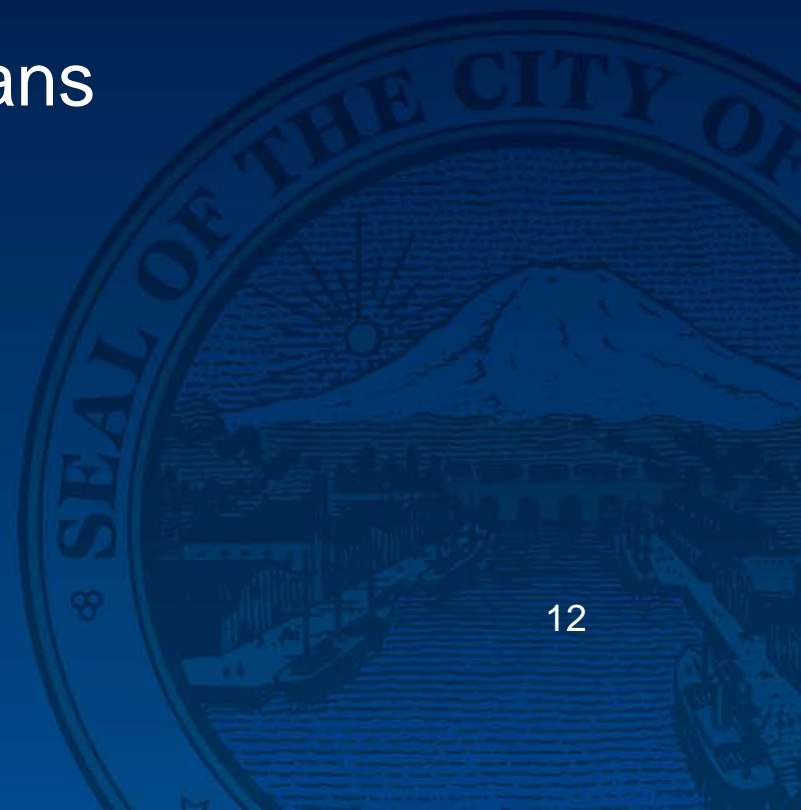


# Equity and Empowerment

- Purposeful Community Outreach and Engagement
- Equitable Service Delivery to All Residents and Visitors
- Commitment to Equity in Decision-making

# New Plan Framework

- Prioritize core elements
- Differentiate policy from implementation
- Consolidate and streamline
- Relationship between Plans



# Core Element Updates

- Land Use
- Transportation
- Housing
- Environment
- Economic Development
- Capital Facilities



# Key Opportunities

- Integrate with the Strategic Plan
- Articulate an Urban Design Vision
- Advance Equity and Empowerment
- Anticipate the Effects of Climate Change
- Focus Efforts to Achieve Tangible Results



# Outreach and Engagement

- Consider findings from other community events, surveys and outreach
  - Conversations Re: Tacoma
  - Community Health Improvement Plan
  - Creative Space Tacoma
  - Symposium on our Youngest Citizens
  - Tacoma 2025 Workshops and Mindmixer



# Outreach and Engagement

- Traditional and non-traditional methods
- 5 Council District Workshops
- 2-3 Topic Based Workshops
- Volunteer Commissions





# Phases and Schedule

		2014	2015											
Tasks		DEC	JAN	FEB	MAR	APR	MAY	JUN	JUL	AUG	SEP	OCT	NOV	DEC
<b>1</b>	Project Kick Off and Scoping	★												
<b>2</b>	Public Participation Strategy													
<b>3</b>	Plan Framework													
<b>4</b>	Best Available Science Review													
<b>5</b>	Plan Element Update													
<b>6</b>	Regulatory Review													
<b>7</b>	SEPA Review													
<b>8</b>	Public Outreach and Engagement													
<b>9</b>	Planning Commission and City Council Review													
<b>10</b>	PSRC Certification													

**2015 Comprehensive Plan Update**  
City of Tacoma  
Planning and Development Services

**City Council Study Session**  
December 9, 2014

