

Planning Commission
December 18, 2013



URBAN FORESTRY LANDSCAPING CODE UPDATES

Small, Medium, Large Trees

- Crown width (canopy) and/or height (at maturity):
 - Small – 15-25 feet
 - Medium – 26-40 feet
 - Large – 41 feet or greater

Minimum Spacing Requirements for Trees

	Small Trees *	Medium Trees *	Large Trees *
Minimum spacing requirement in ft.:	10	25	40

* as defined in glossary under "Tree Class Sizes"

Minimum Soil Volumes and Minimum Unpaved Planting Area per Tree

	Small Trees *	Medium Trees *	Large Trees *
Minimum unpaved planting area (sq. ft.):	24	32	40
Standard tree pit size (ft.):	4 X 6	4 X 8	4 X 10
Minimum soil volume (cu. ft. / cu. yd.):	72 / 2.7	96 / 3.6	120 / 4.4

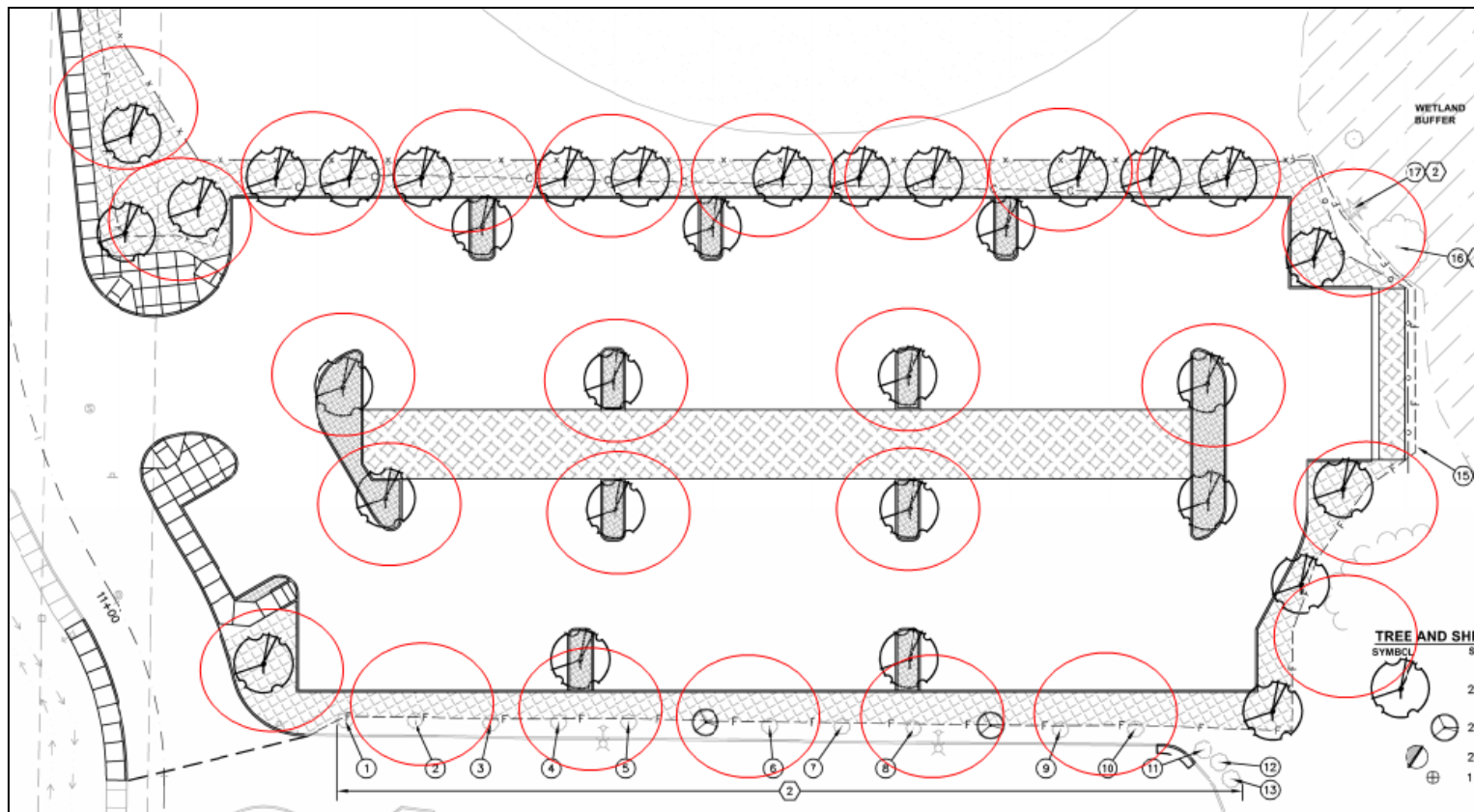
Small, Medium, Large Sliding Scale

- **Street Trees (most zones):**
 - Current Requirement: 3 trees /100 linear feet
 - Proposal:
 - 4 Small / 100 ft
 - 3 Medium / 100 ft
 - 2 Large / 100 ft
- **Parking Lot Interior Trees:**
 - Current Requirement: 1 tree per 1000 square feet
 - Proposal:
 - 1 Small / 700 sf
 - 1 Medium / 1000 sf
 - 1 Large / 1400 sf

Example

CURRENT: 47 trees

PROPOSED: 25 – 50 trees



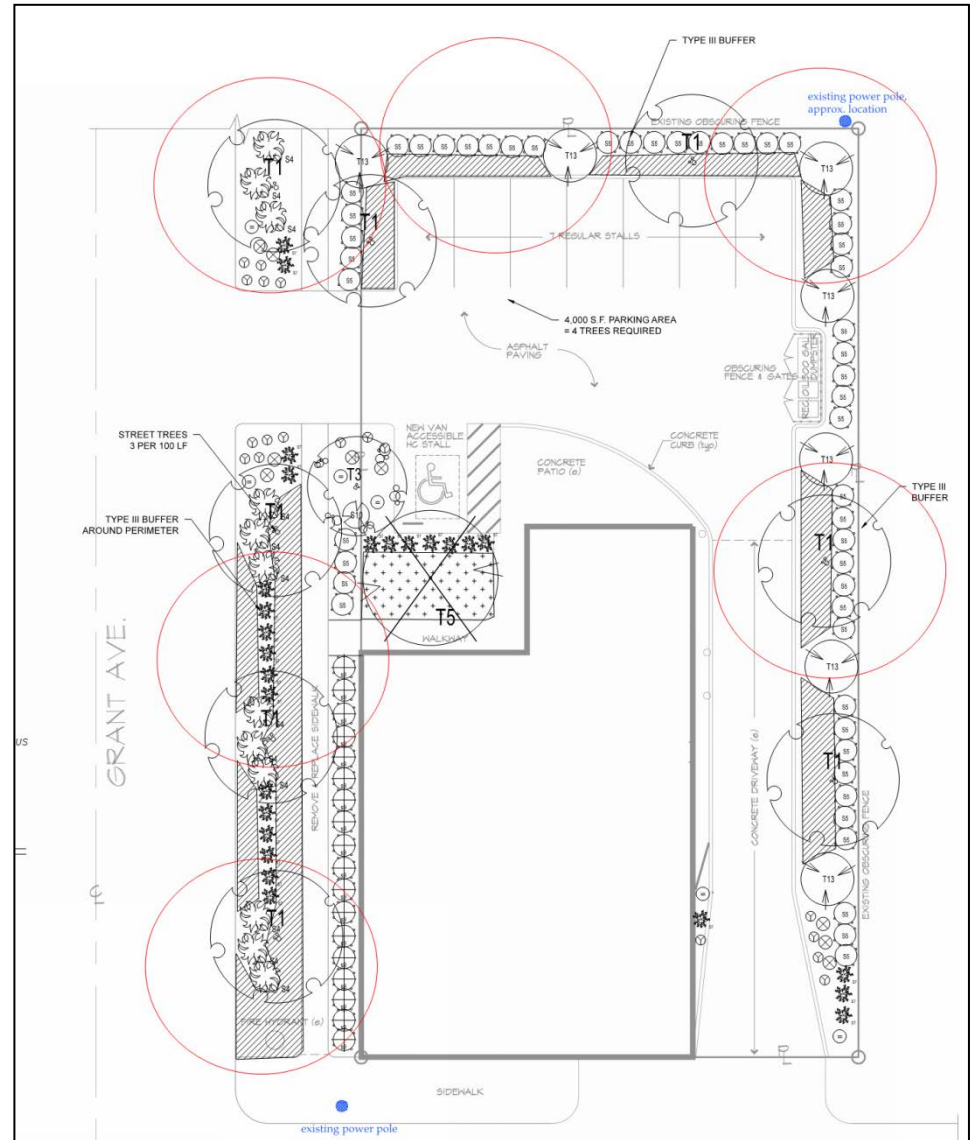
Example

CURRENT: 10 trees

- 6 street trees
- 4 parking lot trees

PROPOSED: 6 – 14 trees

- 4 - 8 street trees
- 3 - 6 parking lot trees



Self-managed agencies

Urban Forest Policy Element:

- Encourage public agencies to adopt goals
- Urban Forestry Plan and program
- Provide additional flexibility

Code provision:

- Public agencies with Urban Forestry Plans
 - Plant up to 50% of required number of trees elsewhere
 - Additional distribution flexibility
-
- *No land use canopy goals (at this time)*
 - *Name changed from “Landscaping Master Plans”*

Incentives/Bonuses

Desired features	Bonuses
Larger trees	Sliding scale
Tree retention	RETAIN EXISTING CODE
Evergreen conifers	Additional credit (e.g., count as 1.2)
Additional soil volume	“
Greater than 50% evergreens/ additional soil volume	Distribution flexibility
LID approaches	TBD
Self-managed agency plan	Up to 50% may be planted elsewhere Distribution flexibility

Next steps

- Continue & broaden consultation
 - Outreach to date
 - Metro Parks
 - Port of Tacoma
 - Public Works
 - Code Enforcement
- “Road test” proposed code
- Requesting Commission direction
 - Draft code on for January 22nd meeting

