

SUSTAINABILITY CODE AMENDMENTS

APPLICATION #2013-09

STEPHEN ATKINSON
PLANNING AND DEVELOPMENT SERVICES
CITY OF TACOMA

FEBRUARY 5, 2014

Purpose of the Amendments

Tacoma's Approach to Sustainability

Sustainability is a term that describes taking care of the environment, economy, and community in a way that allows present and future generations to thrive. Sustainability is less a specific outcome than a means to an end; it involves taking the long view and recognizing the integrated nature of the world and that natural resources are finite. A sustainable approach embeds these concepts in day-to-day decisions and aligns interests and actions toward shared community goals.

Tacoma's Vision

In Tacoma, we strive to achieve an exceptional quality of life for every generation and leave a legacy of stewardship. We work together to achieve lasting and equitable prosperity; build safe, healthy, vibrant communities; and minimize our negative impacts in order to conserve the natural resources that sustain us.

Purpose of Today's Presentation

3

- Continue discussion on EV and Bicycle Infrastructure
- Discuss LID amendments and Setback exceptions
- Items on the “parking lot”
- Recommend for public review

Scope of Work

4

- Part of this Package
 - Electric Vehicle Infrastructure
 - Bicycle Start and End of Trip Facilities
 - Exterior Insulation
 - Low Impact Development

- “Parking Lot”
 - Light Trespass
 - Heat Pumps
 - Green Roofs

Scope of Work

5

- Part of this Package
 - **Electric Vehicle Infrastructure**
 - Bicycle Start and End of Trip Facilities
 - Exterior Insulation
 - Low Impact Development

- “Parking Lot”
 - Light Trespass
 - Heat Pumps
 - Green Roofs



Scope of Work

6

- Part of this Package
 - Electric Vehicle Infrastructure
 - **Bicycle Start and End of Trip Facilities**
 - Exterior Insulation
 - Low Impact Development

- “Parking Lot”
 - Light Trespass
 - Heat Pumps
 - Green Roofs



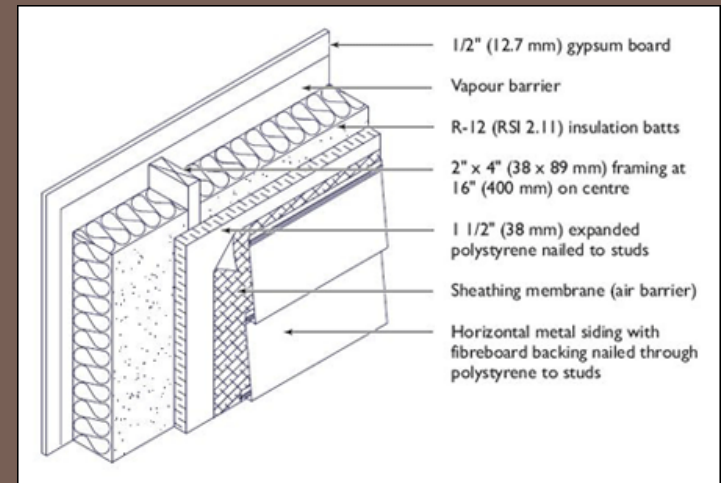
Scope of Work

7

- Part of this Package
 - Electric Vehicle Infrastructure
 - Bicycle Start and End of Trip Facilities
 - **Exterior Insulation**
 - Low Impact Development



- “Parking Lot”
 - Light Trespass
 - Heat Pumps
 - Green Roofs



Scope of Work

8

- Part of this Package
 - Electric Vehicle Infrastructure
 - Bicycle Start and End of Trip Facilities
 - Setback Exceptions for Exterior Insulation
 - **Low Impact Development**

- “Parking Lot”
 - Light Trespass
 - Heat Pumps
 - Green Roofs



Next Steps

9

- Additional edits or comments?
- Request release for public comment

