



CALL TO ARTISTS

REQUEST FOR QUALIFICATIONS

CITY OF TACOMA MUNICIPAL ART PROGRAM

Prairie Line Trail Spur, Tacoma, WA

Deadline: June 29, 2015, midnight

Budget: \$60,000, all inclusive + in-kind structural engineering

Call Summary

The City of Tacoma is seeking an artist or artist team to create an artwork or series of artworks that will attach to eight light poles on the Prairie Line Trail Spur, at S. 15th and Dock streets, in downtown Tacoma. The Spur is an essential section of the Prairie Line Trail and creates a connection between downtown Tacoma and the Thea Foss Waterway. It will be visible by many different types of viewers, including pedestrians, cyclists, motorists, train riders, and marine traffic.

Eligibility

- Applicant(s) must live in Pierce, King, Thurston, or Kitsap County.
- Applicant(s) can apply as a single artist or as an artist team.
- Applicant(s) cannot be a member of the Tacoma Arts Commission or an employee of the City of Tacoma.
- Applicant(s) must be 18 years or older and not a full-time student.

Background

In 2012, the City of Tacoma completed a public art plan for the Prairie Line Trail, funded by the National Endowment for the Arts. This plan (produced by consultants Todd Bressi and Thoughtbarn) identified several public art strategies to define the Trail's identity, sense of place, and vibrancy. The Prairie Line Trail Spur is the City's first permanent public art commission for the Trail. The artwork will be in a very visible, pivotal location, connecting two major multi-modal paths: the Thea Foss Waterway and the Prairie Line Trail.

To date, roughly one third of the trail (the section running through the University of Washington-Tacoma campus) has been completed. Construction on the next third of the trail is planned to begin in late summer 2015.

Prairie Line Trail

The Prairie Line Trail is historically significant as the west coast terminus of the transcontinental railroad. The former BNSF railway travels through the Brewery District, University of Washington-Tacoma campus, past Tacoma Art Museum, and down to the Thea Foss Waterway. The Trail is located in a vibrant area of downtown, adjacent to the Greater Tacoma Convention and Trade Center, Tollefson Plaza, restaurants, and retail. The Sound Transit Light Rail crosses the Prairie Line Trail and Museum of Glass and Washington State History Museum are nearby.

Once completed, this rail to trail conversion will create a linear park and active transportation gateway to the waterfront; build on downtown Tacoma's natural, historic, and cultural assets; and become an integral component of the vision of an attractive, livable, and revitalized downtown.

Thea Foss Waterway

Like the Prairie Line Trail, the Thea Foss Waterway played an important part in Tacoma's industrial past, and was home to marine trade, railroads and sawmills starting in the mid-1800s. Over time these industrial uses polluted the waterway and the economy shifted. The Environmental Protection Agency designated the waterway and Commencement Bay a Superfund cleanup site in 1983.

Starting in the 1990s, the City worked with public and private partners to clean up the site, and in 1996 the Foss Waterway Development Authority was established to responsibly develop the area. Today the Thea Foss Waterway is home to housing, retail, restaurants, several museums (including Museum of Glass), and a large public walkway that incorporates public art. It is connected to downtown Tacoma by the Chihuly Bridge of Glass and the Prairie Line Trail.

Art Opportunity/Consideration

The City of Tacoma is seeking an artist or artist team to create an artwork or series of artworks that will attach to eight light poles on the Prairie Line Trail Spur. The Spur is a crucial, but currently uninviting, link between two significant and historic pathways (the Prairie Line Trail and the Thea Foss Waterway) that are being reimagined as public spaces. A successful artwork will act as a visible marker for the Trail, relate to different types of viewers, and help define the area around the Prairie Line Trail Spur. Proposed artwork must:

- Be site responsive
- Attach to light poles
- Be made of durable materials that are easy to clean and maintain
- Make the Spur unique
- Be visible from a distance
- Relate to multiple types of viewers (pedestrians, motorists, cyclists, mariners)
- Be installed no later than March 31, 2016

In addition, a successful artwork should:

- Complement the vision of the Thea Foss Waterway and the Prairie Line Trail
- Contribute to creating a more welcoming environment for pedestrians and bicyclists

Selection Criteria

Artists will be selected based on the following criteria:

- Artistic quality as exemplified in past work
- Ability to work with durable, low-maintenance materials
- Ability to think and work in a scale and with materials appropriate to the site
- Ability to think conceptually and create artwork responsive to the site
- Ability to reflect the unique nature of this commission
- Ability to relate to multiple types of viewers (pedestrians, motorists, cyclists, mariners)
- Ability to complete the project by March 31, 2016

Timeline

June 29, 2015, midnight	Deadline for submissions
By July 10, 2015	Review of submissions and selection of finalists
Week of July 20, 2015	Site visit with finalists
Week of July 27, 2016	Interviews with finalists and selection of artist/artist team
By March 31, 2016	Completion of public artwork

Questions?

Contact Rebecca Solverson, Public Art Specialist, 253-591-5564,
rebecca.solverson@cityoftacoma.org.

Submission Process

Please submit the following four items by email to rebecca.solverson@cityoftacoma.org with “Spur” followed by your last name in the subject line. We suggest sending items 1, 2, and 4 as PDF documents; word documents are also acceptable. If your email is over 10 MB in size, you may need to send attachments in several batches. Please do not send zip files.

1. Short Written Responses

- Please submit responses to the following questions, in one page or less (combined). Include artist’s name in the upper right corner. Name the file with the applicant’s last name: “Smith Responses”:
 1. What is your approach to public art?
 2. Why are you interested in this project?
 3. How do you see your work translating to this project?

2. Professional Resume and References

- Resume should not exceed 3 pages and should include the names, titles, addresses, emails and phone numbers of three professional references (only finalists’ references will be contacted). Artist teams should submit a resume for each artist. Resume should include artist’s name, address, phone, and email address, and relationship if part of an artist team.
- List most recent public art and/or art experience first.
- Name the resume file with the applicant’s last name: “Smith Resume”.

3. Work Samples

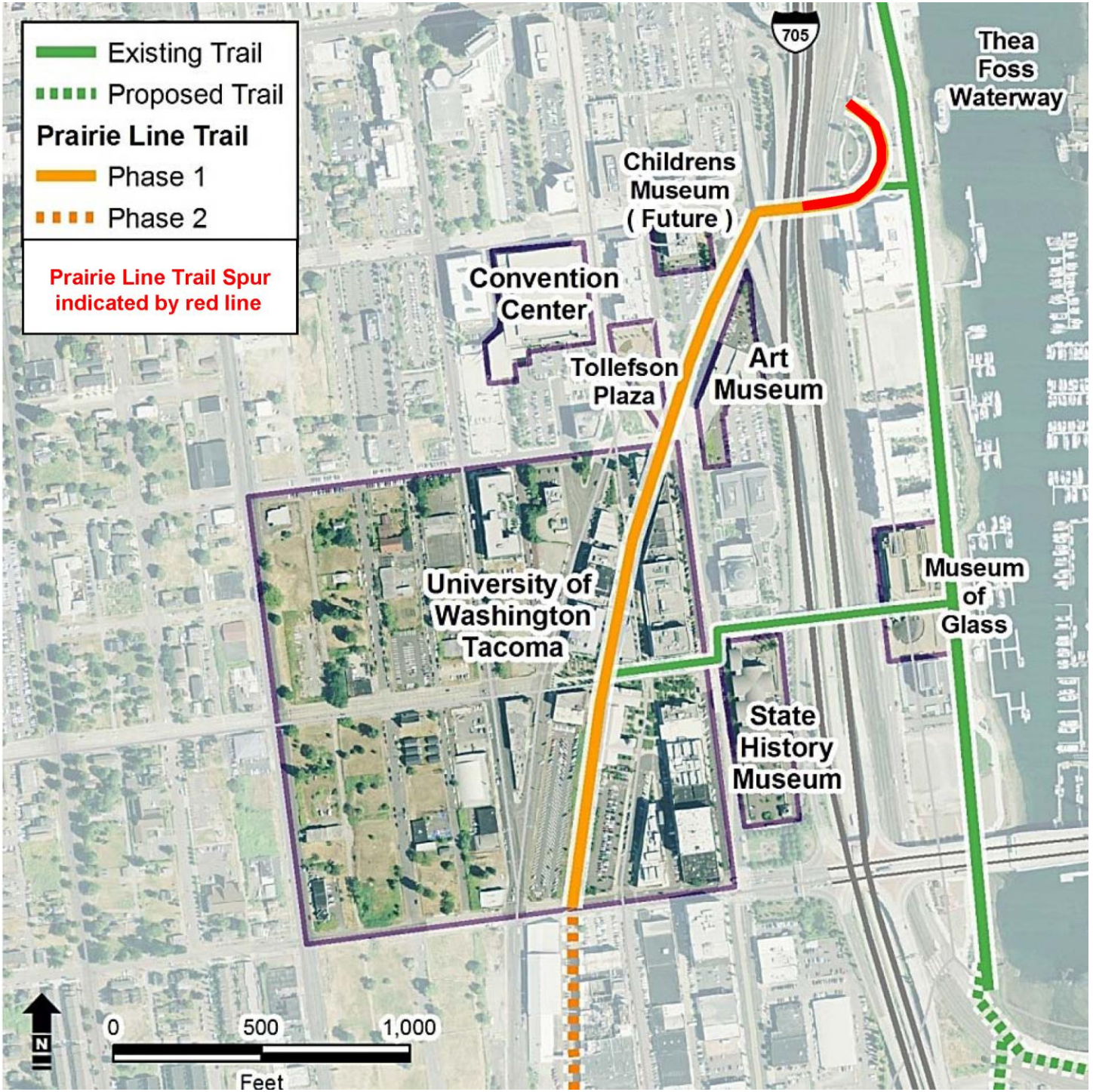
10 digital images of the artist’s completed work. If available, work samples should include documentation of similar past public projects. Artist teams are encouraged to submit work that was previously completed as a team. Artists applying as a team who have no examples of joint work in the past may submit 10 images of each artist’s work.

- Submit only “High” quality JPEG files (do not use GIF, TIFF, or other formats.)
- Files must be titled with a number indicating the viewing order, followed by the applicant’s name. The numbers must correspond to the Work Sample Description Sheet. Use a “0” in front of single digit numbers and use only letters, numbers, and underscores. For example: 01_Smith.jpg; 02_Smith.jpg.

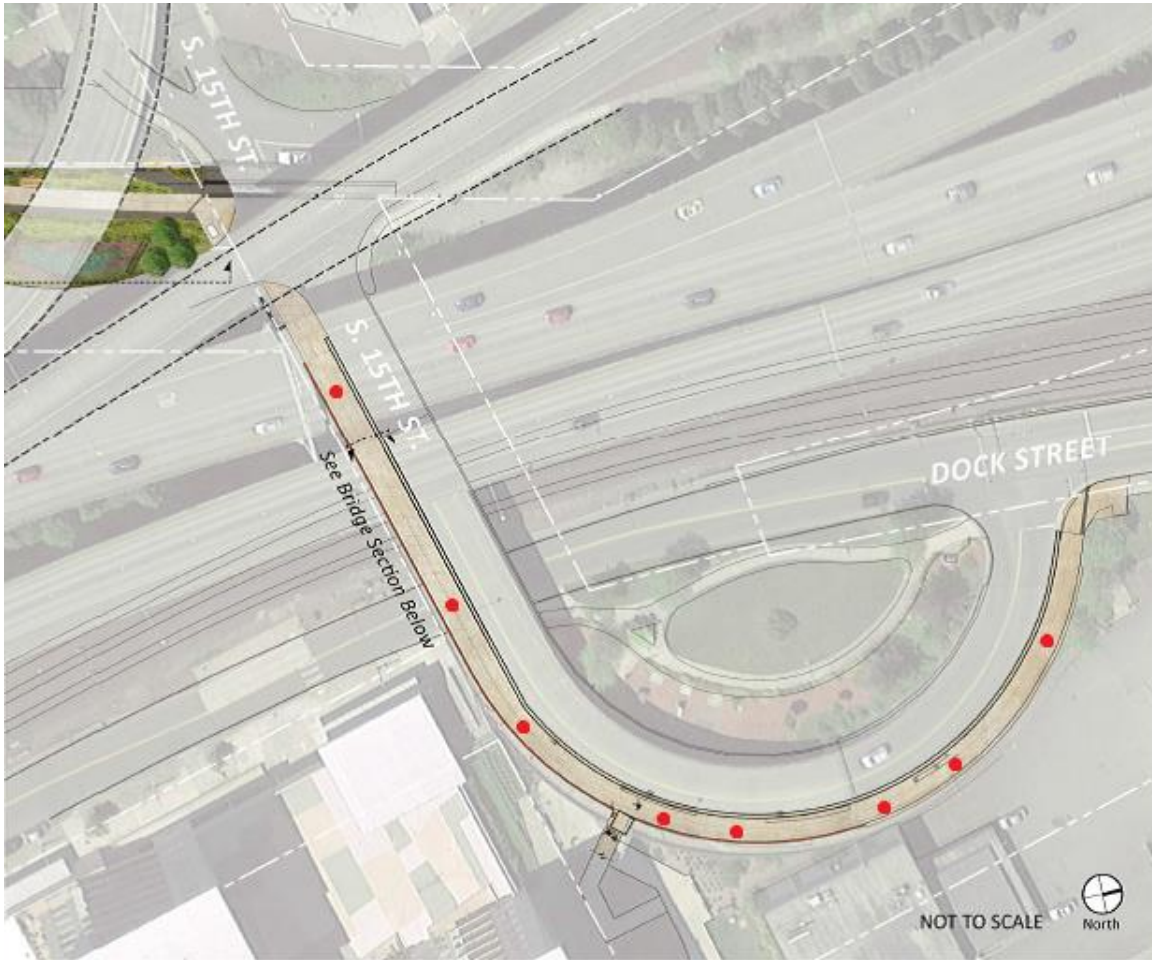
4. Work Sample Description Sheet including:

- Name in the upper right corner of every page
- Images numbered consecutively and listed in the order in which they are to be viewed
- Title of each artwork represented in the image
- Location (City, State, Neighborhood, if relevant), funding agency or owner/collection
- Budget
- Date work was completed
- Dimensions (H” x W” x D”), if applicable
- Medium
- Short description of artwork or activity including main concept or idea
- If work is presented as part of a collaboration, explain your role in the larger project and credit design team or individual collaborators by name and role (e.g. landscape architect)
- Name the file with the applicant’s last name: “Smith WSDS”

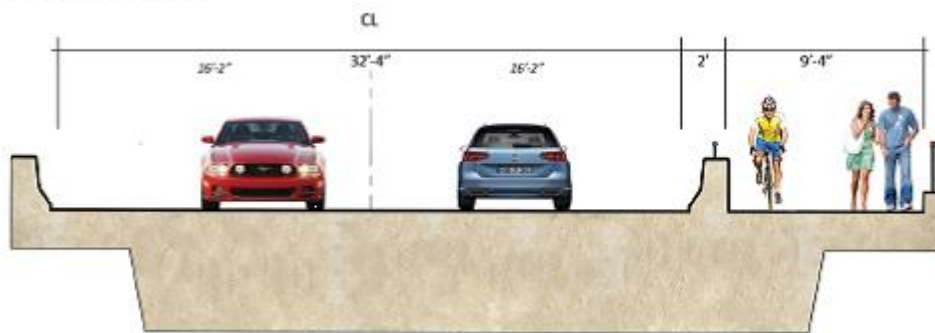
Prairie Line Trail Map:



Illustrative Site Plan of the Prairie Line Trail Spur, with approximate light post locations:



BRIDGE SECTION NOT TO SCALE



Existing Conditions on the Prairie Line Trail Spur:

