

McKINLEY AVE.

SPOKANE STREET

VOEUK
3855

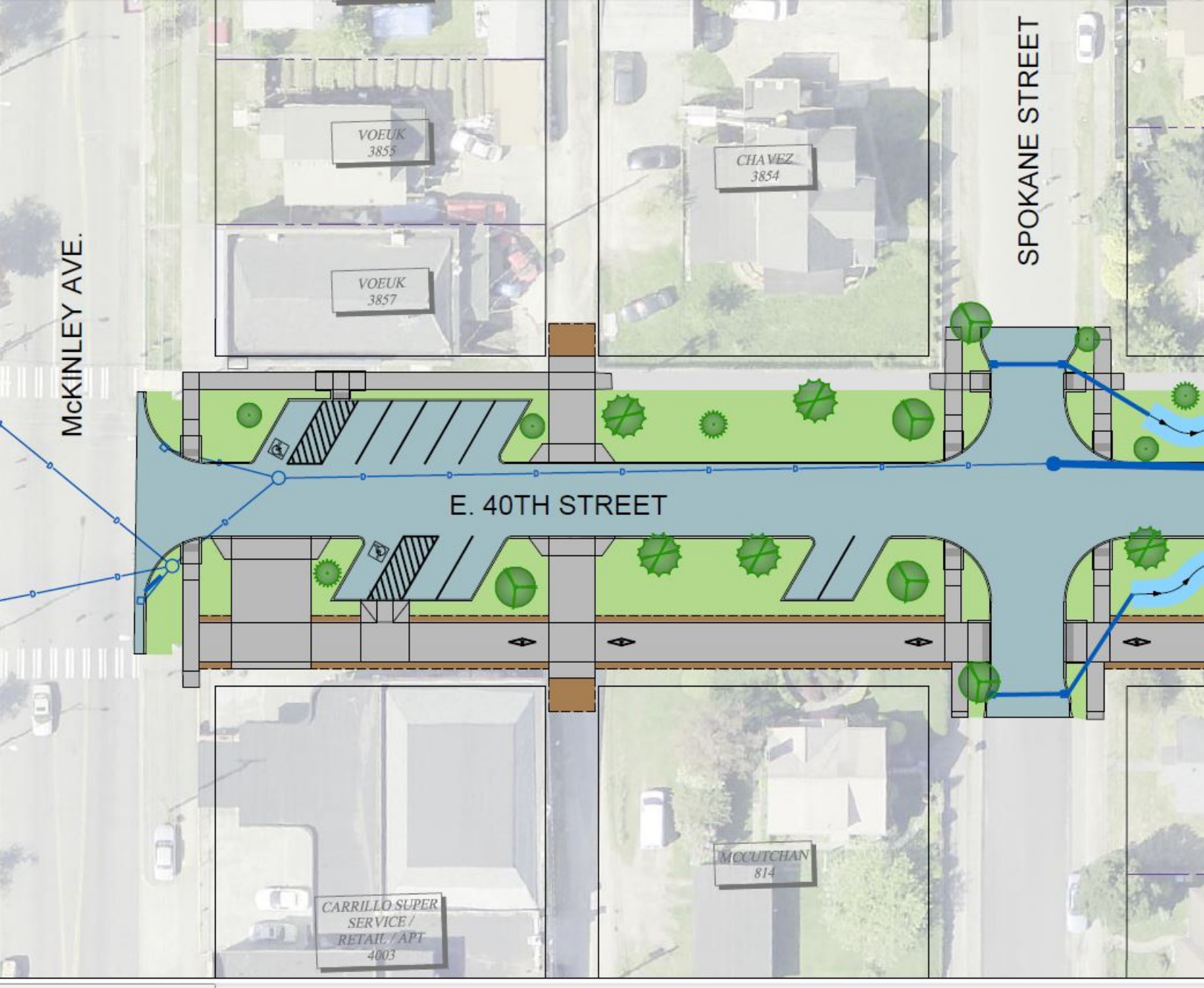
VOEUK
3857

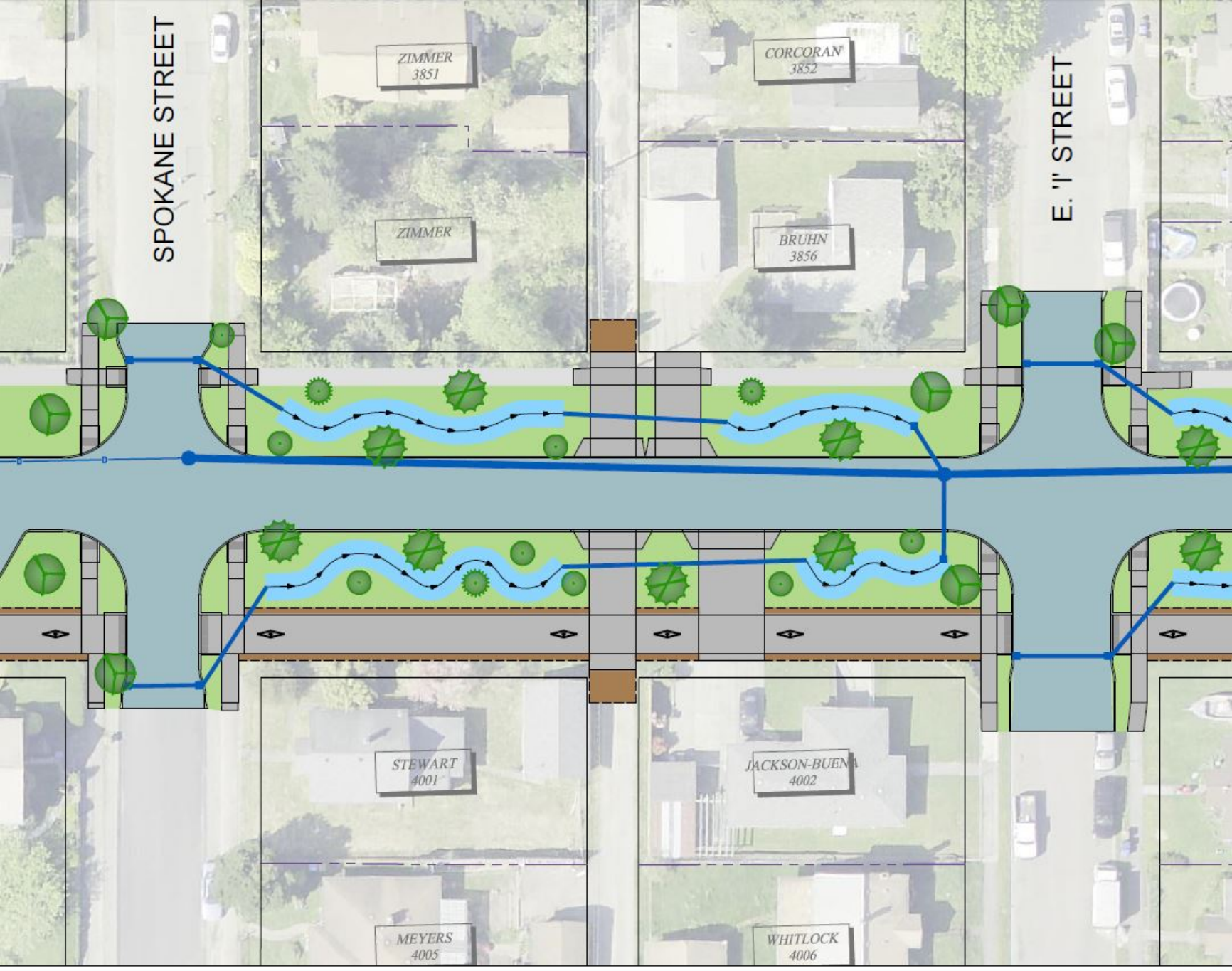
CHAVEZ
3854

E. 40TH STREET

CARRILLO SUPER
SERVICE /
RETAIL / APT
4003

MCCUTCHAN
814





SPOKANE STREET

ZIMMER
3851

ZIMMER

CORCORAN
3852

BRUHN
3856

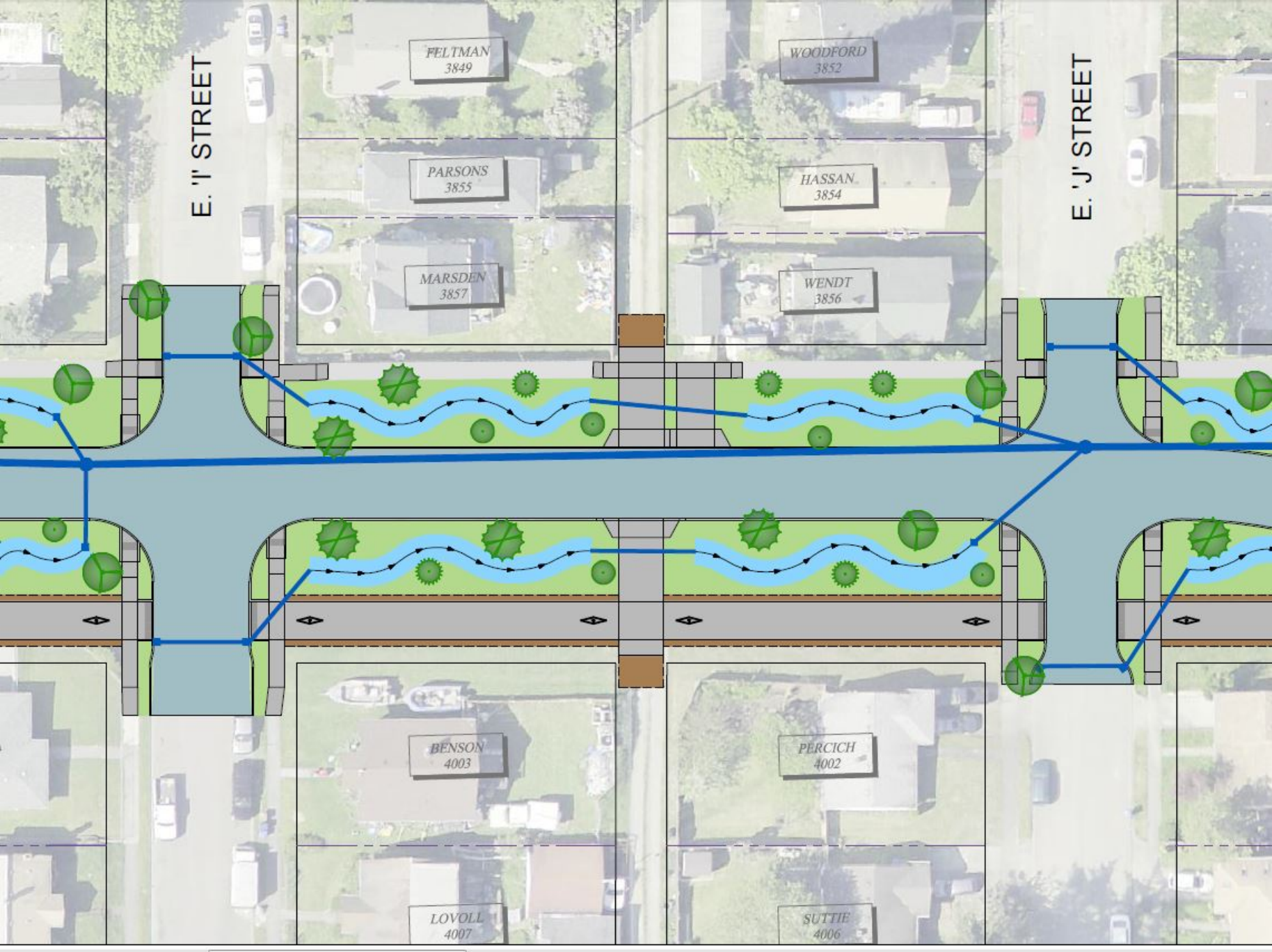
E. "I" STREET

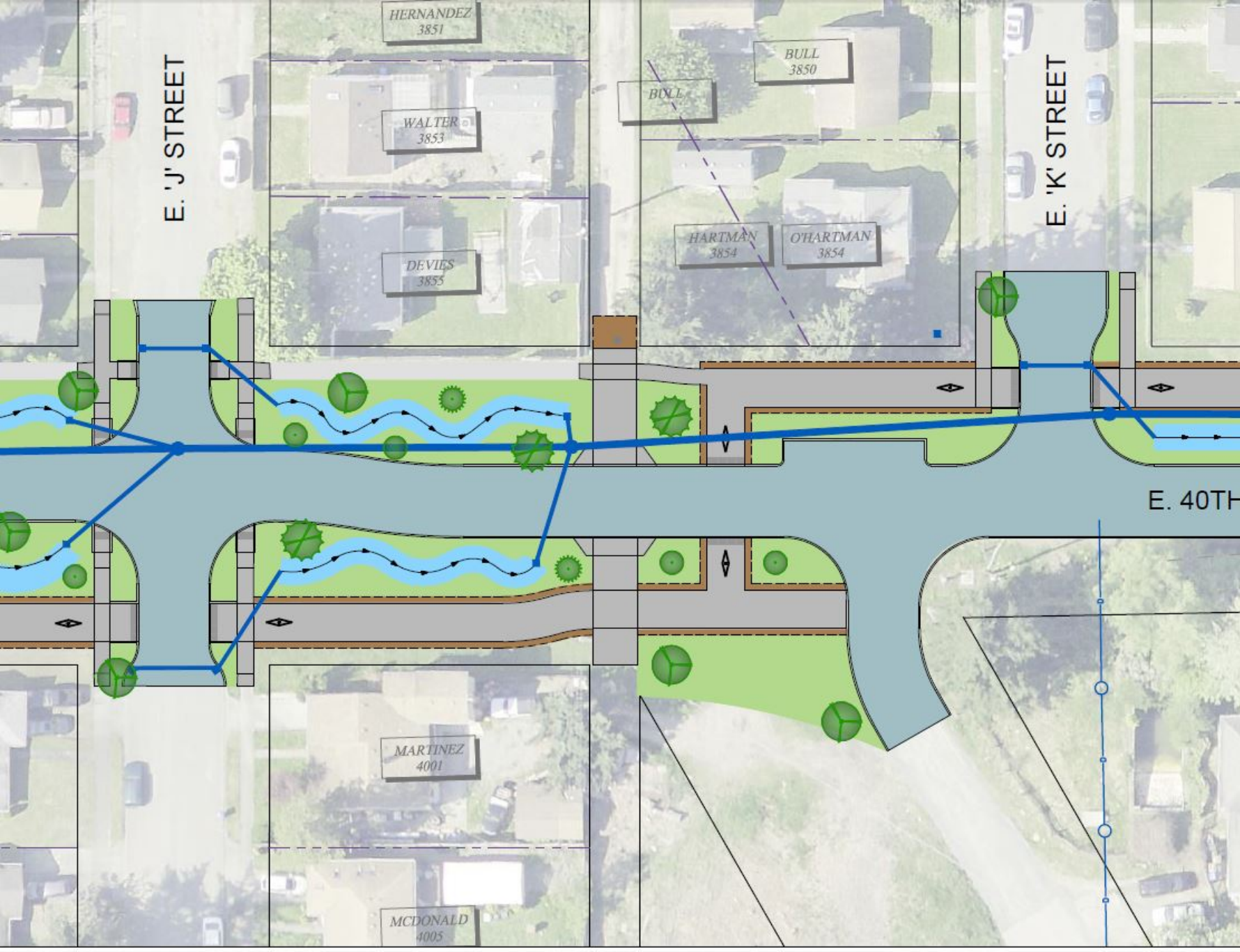
STEWART
4001

MEYERS
4005

JACKSON-BUENA
4002

WHITLOCK
4006





E. 'J' STREET

E. 'K' STREET

E. 40TH STREET

HERNANDEZ
3851

WALTER
3853

DEVIES
3855

BULL
3850

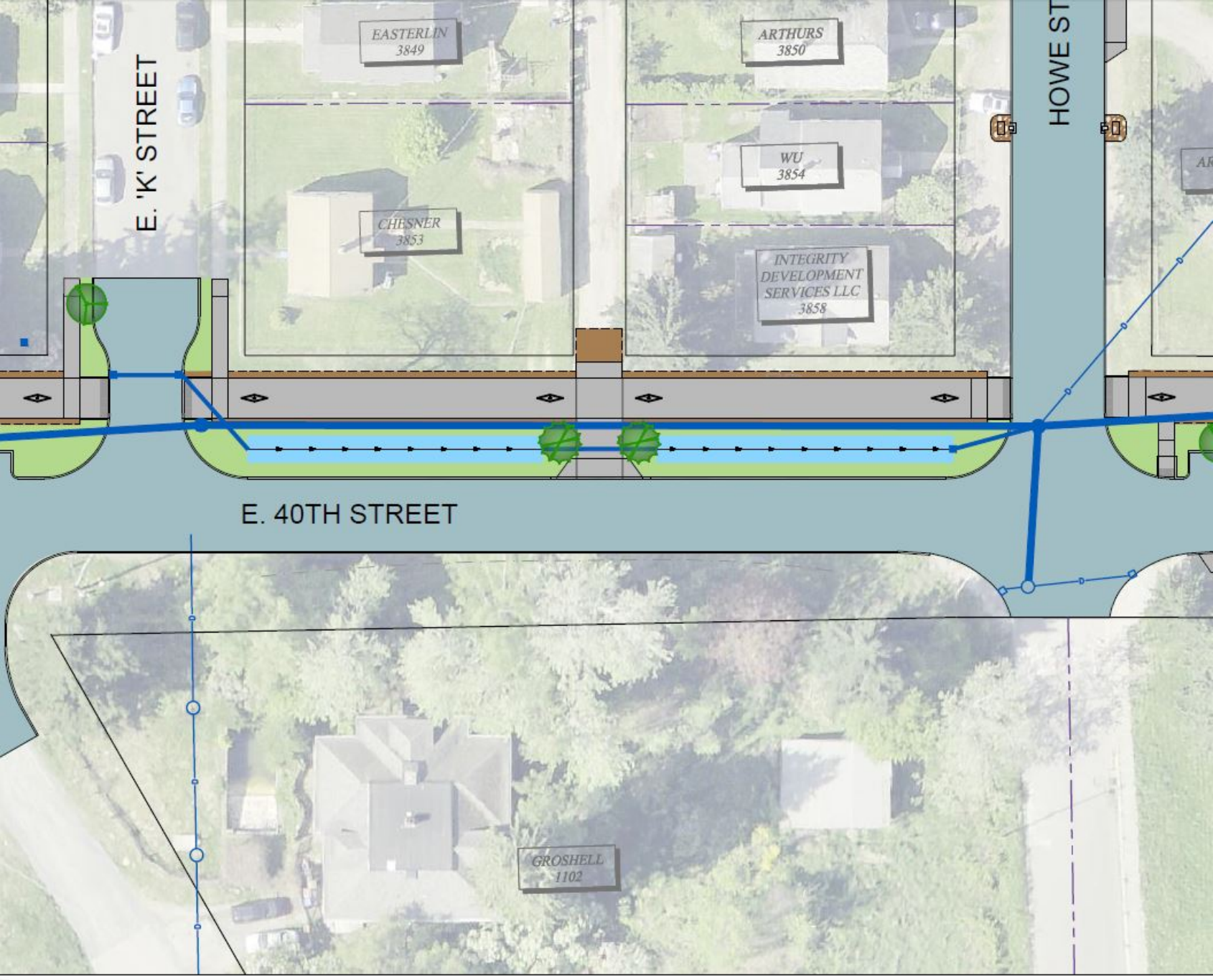
BULL

HARTMAN
3854

O'HARTMAN
3854

MARTINEZ
4001

MCDONALD
4005



E. 'K' STREET

HOWE STREET

EASTERLIN
3849

ARTHURS
3850

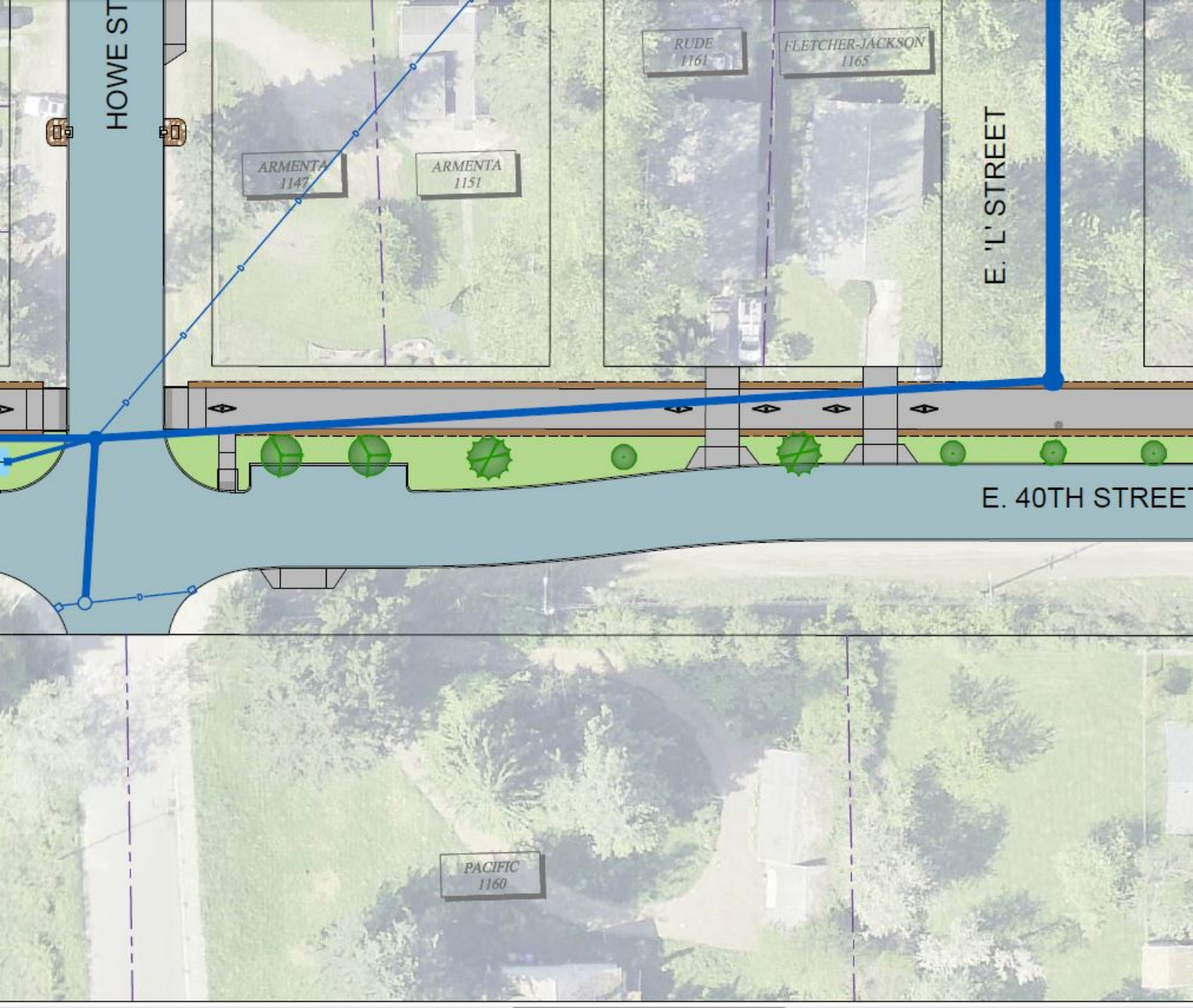
CHESNER
3853

WU
3854

INTEGRITY
DEVELOPMENT
SERVICES LLC
3858

E. 40TH STREET

GROSHELL
1102



HOWE ST

ARMENTA
1147

ARMENTA
1151

RUDE
1161

FLETCHER-JACKSON
1165

E. 'L' STREET

E. 40TH STREET

PACIFIC
1160

E. 'L' STREET

E. 'M' STREET

MILLER
1217

E. 40TH STREET

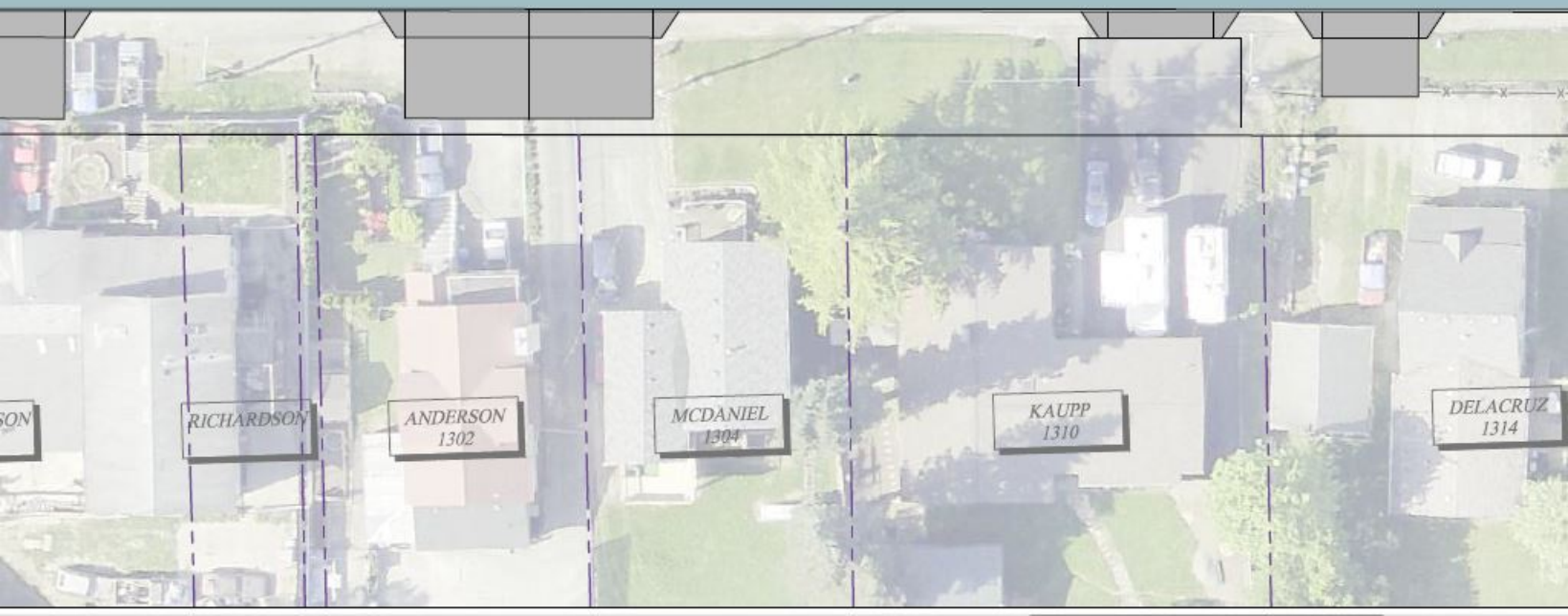
ELVNN
1202

RICHARDSON
1216

RICHARDSON

E. 'M' STREET

HILL STREET



RICHARDSON

ANDERSON
1302

MCDANIEL
1304

KAUPP
1310

DELACRUZ
1314

HILL STREET

ORTIZ
1351

ROLLAHN LLC
3854

E. 'N' STREET

E. 40TH STREET

DELACRUZ
1314

DOWELL
1320

IN
4002

FEL

E. N' STREET

SALISBURY EASTSIDE
LUTHERAN
ETAL
1403

DIOCESE OF
OLYMPIA INC
1427

CHURCH
1427

DIOCESE OF
OLYMPIA INC
1427

DIOCESE OF
OLYMPIA INC
1427

CHRISTIAN
APOSTOLIC
CHURCH
1431

SAMS DISCOUNT
STORE /
DRAT WEAR
1912

7-11
CONVENIENCE
STORE
1922

E. 40TH STREET

FEDERAL NATIONAL
MORTGAGE
ASSOCIATION
4001

TRAN
4005

TACOMA PIERCE
COUNTY HABITAT
HUMANITY
1412

TACOMA PIERCE
COUNTY HABITAT
HUMANITY
1416

TROFIMOVICH
1439

JOHNSON
1442

ORTIZ
1434

CHAY
1406

SNOK MARDELL
777E
1400

CITY OF TACOMA
PUBLIC
WORKS DEPT

LDM
4002

PORTLAND AVE