

2014 Garbage, Recycling and Yard/Food Waste collection schedule

January							February							March						
S	M	T	W	T	F	S	S	M	T	W	T	F	S	S	M	T	W	T	F	S
			1	2	3	4							1							
5	6	7	8	9	10	11	2	3	4	5	6	7	8	2	3	4	5	6	7	8
12	13	14	15	16	17	18	9	10	11	12	13	14	15	9	10	11	12	13	14	15
19	20	21	22	23	24	25	16	17	18	19	20	21	22	16	17	18	19	20	21	22
26	27	28	29	30	31		23	24	25	26	27	28		23	24	25	26	27	28	29
														30	31					

April							May							June						
S	M	T	W	T	F	S	S	M	T	W	T	F	S	S	M	T	W	T	F	S
			1	2	3	4							1							
6	7	8	9	10	11	12	4	5	6	7	8	9	10	8	9	10	11	12	13	14
13	14	15	16	17	18	19	11	12	13	14	15	16	17	15	16	17	18	19	20	21
20	21	22	23	24	25	26	18	19	20	21	22	23	24	22	23	24	25	26	27	28
27	28	29	30				25	26	27	28	29	30	31	29	30					

July							August							September						
S	M	T	W	T	F	S	S	M	T	W	T	F	S	S	M	T	W	T	F	S
			1	2	3	4							1							
6	7	8	9	10	11	12	3	4	5	6	7	8	9	7	8	9	10	11	12	13
13	14	15	16	17	18	19	10	11	12	13	14	15	16	14	15	16	17	18	19	20
20	21	22	23	24	25	26	17	18	19	20	21	22	23	21	22	23	24	25	26	27
27	28	29	30	31			24	25	26	27	28	29	30	28	29	30				

October							November							December						
S	M	T	W	T	F	S	S	M	T	W	T	F	S	S	M	T	W	T	F	S
			1	2	3	4							1							
5	6	7	8	9	10	11	2	3	4	5	6	7	8	7	8	9	10	11	12	13
12	13	14	15	16	17	18	9	10	11	12	13	14	15	14	15	16	17	18	19	20
19	20	21	22	23	24	25	16	17	18	19	20	21	22	21	22	23	24	25	26	27
26	27	28	29	30	31		23	24	25	26	27	28	29	28	29	30	31			

■ = set out garbage (green) and recycling (blue) containers on your regular collection day
 ■ = set out yard/food waste (brown) containers on your regular collection day

This calendar, specific to the area of the city in which you live, shows the weeks you set out your garbage and recycling and your yard/food waste containers. Garbage and recycling are set out on the same day and yard/food waste is set out by itself on alternating weeks. To find your collection day and the holiday collection schedule specific to your address, go to TacomaRecycles.org/collectioncalendar.

Holiday Collection Schedule		
	If your regular pickup day is...	Your pickup day will be...
Christmas Day 2013	Wednesday, Dec. 25 Thursday, Dec. 26 Friday, Dec. 27	Thursday, Dec. 26 Friday, Dec. 27 Saturday, Dec. 28
New Year's Day 2014	Wednesday, Jan. 1 Thursday, Jan. 2 Friday, Jan. 3	Thursday, Jan. 2 Friday, Jan. 3 Saturday, Jan. 4
Fourth of July 2014	Friday, July 4	Saturday, July 5
Thanksgiving 2014	Thursday, Nov. 27 Friday, Nov. 28	Friday, Nov. 28 Saturday, Nov. 29
Christmas Day 2014	Thursday, Dec. 25 Friday, Dec. 26	Friday, Dec. 26 Saturday, Dec. 27

Pickup for all other holidays is on regular schedule.

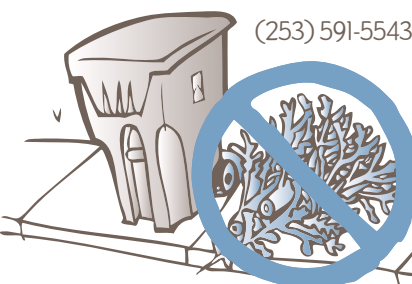
Recycle your Christmas tree

Yard waste container
 Cut your Christmas tree (unflocked, undecorated, no stand) in sections small enough to fit inside your brown yard waste container so the lid closes flat. Trees left outside the container are not accepted.

Landfill drop-off

Single-family residents may recycle their unflocked, undecorated tree without stand at the Tacoma Landfill (3510 S. Mullen St.) Dec. 26 through Jan. 19. The landfill is open from 8 a.m. to 6 p.m. daily (closed Christmas Day and New Year's Day).

Dispose of flocked trees in the garbage.



Looking for a previous issue of EnviroTalk?

An archive of issues from 2009 forward is online at cityoftacoma.org/envirotalk

Or a greener cleaner recipe?

You'll find greener cleaner recipes at cityoftacoma.org/greenercleaners

7

Get Growing: TAGRO PRODUCTS AVAILABLE YEAR-ROUND

TAGRO is open year-round, so if your indoor plants need a boost, get them growing with TAGRO Potting Soil.

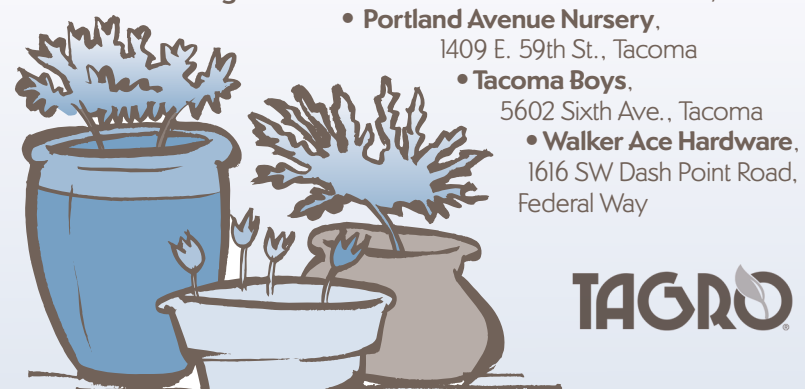
Visit TAGRO at
 2201 Portland Ave., Gate 6.

TAGRO winter hours
 (now thru March):

Monday-Friday,
 8 a.m. to 3 p.m.

We deliver, too!
 (Delivery fees apply.)

(253) 502-2150
tagro.com



TAGRO potting soil by the bag is available at these locations:

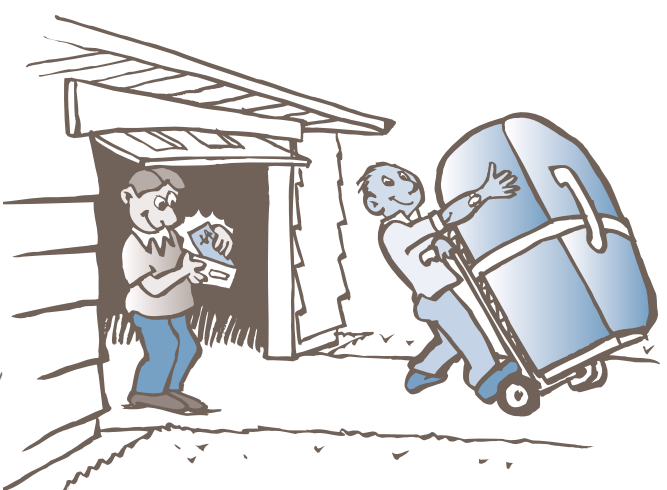
- **Ace Hardware at Westgate**, 2675 N. Pearl St., Tacoma
- **AgriShop Tacoma Ace Hardware**, 2012 S. 12th St., Tacoma
- **Burien Ace Hardware**, 14903 4th Ave. SW, Burien
- **GardenSphere**, 3310 N. Proctor St., Tacoma
- **Gray Lumber**, 3800 Sixth Ave., Tacoma
- **H&L Produce**, 7320 Lakewood Drive W., Lakewood
- **Jade Mountain Nursery**, 5020 116th St. E., Tacoma
- **Northshore Ace Hardware**, 35419 21st Ave. S.W., Federal Way
- **Portland Avenue Nursery**, 1409 E. 59th St., Tacoma
- **Tacoma Boys**, 5602 Sixth Ave., Tacoma
- **Walker Ace Hardware**, 1616 SW Dash Point Road, Federal Way

Get \$30 to recycle that relic refrigerator while you can

Tacoma Power's fridge recycling rebate program ends this year
 It's time to unplug. Tacoma Power will give you \$30 cash back and haul your old working fridge or freezer away free. Just schedule pickup by Dec. 15 before the rebate program ends.

Plus, you'll save up to \$60 a year on your electric bill and can feel good knowing 95 percent of its components will get recycled.

Call (877) 577-0510 to schedule pickup or visit KnowYourPower.com/fridge for more info.



EnviroTalk

in this issue

- Reduce risk of flooding..... page 2
- Dispose of grease, oil..... page 3
- Make a bottle cap snowman page 4
- TAGRO available year-round page 7

Garbage and Recycling
 & yard & food waste
 schedule & stickers inside!

We want to hear from you:
EnviroTalk@cityoftacoma.org



Recycled and recyclable
 Printed with soy-based ink
 PW 51205 016 11B-a (NORTH)



Environmental Services
 747 Market Street, Room 408
 Tacoma, Washington 98402-3769

PRSRST STD
 U.S. POSTAGE PAID
 TACOMA, WA
 PERMIT NO. 2

Holiday collection schedule

for garbage/recycling and yard/food waste

If your regular garbage/recycling or yard/food waste collection day falls on these holidays or the days following the holiday, your collection will be one day late during that week.

Holiday	If your regular pickup day is...	Your pickup day will be...
Christmas Day	Wednesday, Dec. 25 Thursday, Dec. 26 Friday, Dec. 27	Thursday, Dec. 26 Friday, Dec. 27 Saturday, Dec. 28
New Year's Day 2014	Wednesday, Jan. 1 Thursday, Jan. 2 Friday, Jan. 3	Thursday, Jan. 2 Friday, Jan. 3 Saturday, Jan. 4

For more information:

- Recorded message specific to the upcoming holiday: (253) 565-5955, press 2
- Collection calendar with holiday schedule specific to your home: TacomaRecycles.org/collectioncalendar



If you need this information in an alternative format, please call (253) 591-5051. People with hearing or speech impairments may contact us through Washington Relay Services, 1-800-833-6388 (TTY or ASCII).

EnviroTalk

Winter 2013

Create your own rain garden

Rain gardens are attractive, low-maintenance landscape features that encourage natural habitat in your backyard.

They filter pollutants out of stormwater and get rainwater to soak into the ground rather than flooding your yard.

To encourage residential rain gardens, Environmental Services is piloting an incentive program to offer **design assistance and soil testing**.

If you live within either the **Flett Creek** or **Leach Creek watersheds**, you may also qualify for a **cash rebate** up to a maximum of \$2,000 to help with construction costs.

To find out if you qualify for assistance and/or a rebate: raingarden@cityoftacoma.org (253) 591-5588.

cityoftacoma.org/raingarden

EnviroHouse

FREE workshops begin again in February 2014. Topics include natural daylight systems, backyard chickens, pruning and early gardens. Advance registration is required. Check the EnviroHouse website in late January at cityoftacoma.org/EnviroHouse or call (253) 573-2426.

Take a Walk in the Rain at the EnviroHouse

The EnviroHouse is now home to four outdoor features that help manage stormwater on-site. If you visit on a rainy day, you'll see how they work and get ideas for reducing the amount of polluted runoff leaving your home.

The features:

- **Permeable pavement, pathways around the house** – These special pavers allow rainwater to soak into the ground while filtering some pollutants.
- **Green roof, on the kiosk** – Plants growing in a special soil mix installed over a roof's waterproofing surface soak up rain, clean the air and provide natural insulation.
- **Rain barrels, at kiosk and house downspouts** – Rain barrels catch and store rainwater for watering plants, washing cars and other outdoor uses.
- **Rain garden, near the front porch of the house** – This shallow, landscaped depression is designed to collect and filter runoff from surrounding hard surfaces such as roofs, walkways and driveways.

The idea is to make our neighborhoods work more like a native forest, slowing the flow of runoff and preventing pollutants like oil, pet waste, fertilizers and toxic chemicals from washing into our local waterways.

EnviroHouse:
 City of Tacoma Landfill, 3510 S. Mullen St.
 Wed.-Fri.: 10 a.m.-3 p.m.,
 Sat.-Sun.: 11 a.m.-5 p.m.
 (253) 573-2426
cityoftacoma.org/EnviroHouse



Winter brings heavier rain with potential for water pollution, floods

Heavier, more frequent rain means more opportunities to wash pollutants into our waterways and cause flooding in our streets and homes.

To reduce the risk of flooding:

❖ **Keep storm drains clear of leaves and debris** by using a broom or rake.

❖ **Dispose of leaves** by composting, placing them in your brown yard waste container or taking them to the Tacoma Landfill (no extra charge for residential customers). Don't blow leaves into the street.

❖ **Prevent bark, dirt and other landscape materials from washing into streets and clogging drains** by using landscape barriers, such as rocks or sandbags.

❖ **Direct downspouts at least 10 feet away from your home or business.**

❖ **Clear garage, basement and outdoor drains.**

Report flooding or sewage backups: **(253) 591-5585**

(24-hour number – Environmental Services Transmission/Tacoma Wastewater Treatment Plant Operations)

cityoftacoma.org/flood



Help stop water pollution

Call Tacoma's water pollution hotline: **(253) 383-2429**

if you see:

- Construction site runoff
- Accidental spills
- Leaking dumpsters
- Soapy or discolored water running into storm drains
- People dumping oil, chemicals or other waste into or near storm drains, creeks, lakes or Commencement Bay.

This hotline is a joint effort between the City of Tacoma and Citizens for a Healthy Bay. Callers can remain anonymous.

RESOURCE GUIDE WINTER 2013

Solid Waste Management

Solid Waste Management (garbage, recycling, yard/food waste)

General Solid Waste questions	591-5543	TacomaRecycles.org or cityoftacoma.org/solidwaste
Recorded Solid Waste Information Line	565-5955	
Call-2-Haul	573-2468	cityoftacoma.org/call2haul
Hazardous waste	591-5418	cityoftacoma.org/hazwaste
Landfill scalehouse	593-7724	

Surface Water Management Wastewater Management

Sewer backups & Street flooding		cityoftacoma.org/sewerbackup
Street sweeping	591-5585	cityoftacoma.org/flood cityoftacoma.org/streetsweeping
Billing questions	502-2100	
Leaf disposal		cityoftacoma.org/leaves
TAGRO	502-2150	tagro.com
General Surface Water and Wastewater questions	591-5588	cityoftacoma.org/surfacewater cityoftacoma.org/wastewater

Environmental Services (solid waste, surface water, wastewater)

EnviroHouse	573-2426	cityoftacoma.org/envirohouse
E-mail listserv		cityoftacoma.org/environews
Twitter		twitter.com/CityofTacoma
Facebook		facebook.com/CityofTacoma

When calling any of the utilities, please have your account number available. Your account number is located at the top of your utility bill.

Enviro Q&A

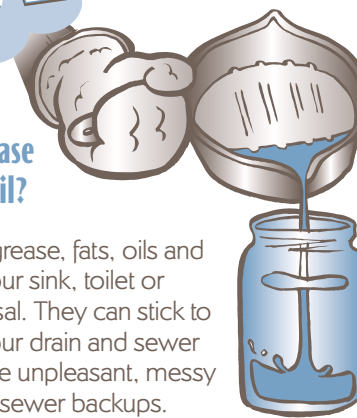
Q. How do I dispose of grease and cooking oil?

A. Don't pour grease, fats, oils and gravy down your sink, toilet or garbage disposal. They can stick to the inside of your drain and sewer pipes and cause unpleasant, messy and expensive sewer backups.

Collect grease from pans in a jar or can, let cool, seal and place in the trash.

Residential customers may recycle large amounts of cooking oil, such as from deep-fat fryers, for no additional charge at the Household Hazardous Waste Facility, located at the Tacoma Landfill, 3510 S. Mullen St.

cityoftacoma.org/grease
Wastewater: (253) 591-5588
Household Hazardous Waste: (253) 591-5418



EnviroKIDS BOTTLE CAP SNOWMAN ORNAMENT

What you need:

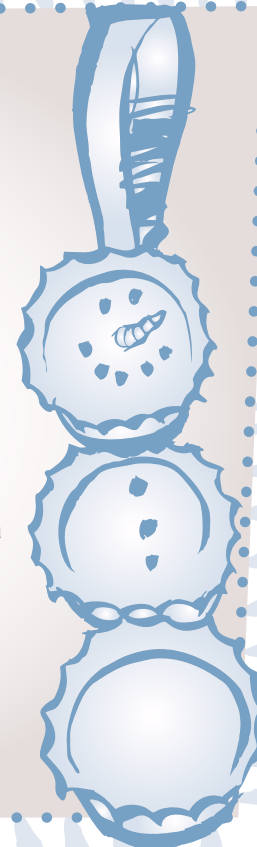
- 3 bottle caps
- white acrylic paint
- paintbrush
- fine point black marker
- scrap of orange paper
- ribbon
- hot glue gun (with help from an adult)
- button
- scissors

Directions:

1. Paint the inside of each bottle cap with a few coats of white paint. Allow the caps to dry completely between coats.
2. Glue bottle caps to a piece of ribbon. Put a bit of glue between each bottle cap to hold them together. Form a loop with the top of the ribbon and glue in place.
3. Use a black marker to draw the eyes, mouth and buttons.
4. Snip a triangle of orange paper for the nose and glue it in place.
5. Tie a ribbon between the first and second bottle caps to make a scarf. Accent with a button.

Options:

- Add glitter or other embellishments.
- Use black paint for the eyes, mouth and buttons and orange paint for the nose.
- Paint the backs black or white.
- Use yarn or a tiny scrap of fabric for the scarf.



What's that WORD?

Complete the sentences below (you'll find the answers in this issue of EnviroTalk) and then find the word or phrase in the word search below. If you get stumped, the answers are at the bottom. A key to this word search will be featured in the next issue of EnviroTalk.

1. More rain means more opportunities to wash pollutants into our waterways.
2. _____ can stick to the inside of your drain and sewer pipes and cause sewer backups.
3. Recycle old _____ for free at E-Cycle Washington locations.
4. Rain _____ catch and store rainwater for watering plants, washing cars and other outdoor uses.
5. Cut your Christmas _____ in sections small enough to fit inside your brown yard waste container so the lid closes flat.
6. Recycle clean, dry _____ packing blocks for free at the City's Recycling Center.
7. Permeable _____ allow rainwater to soak into the ground while filtering some pollutants.
8. TAGRO is open year-round, so if your indoor _____ need a boost, get them growing with TAGRO Potting Soil.

L Z E V S K L J O S E N H P V
I U C S D V T I I M E P P B C
N M U T L V L S K C L X A I I
D F Z Y R A J R U S E I V E V
D A G R P B Z S Y R C V E M Z
G C (P O L L U T A N T S) R H R
R Y J F A O K W M P R L S A D
E B N O N J E L P A O R J P S
A L J A T R G U C U N P G P Z
S I X M S C Y H O L I D A Y S
E T W Y V O X I M Y C Y X Z Z
Z D N E Q I I O C D S T K C W
Q H J Y Z C R H R F X R P Q G
A B F F P L M S W C S E P A T
D A U A U W Z B A R R E L S R

Answers: 1. POLLUTANTS, 2. GREASE, 3. ELECTRONICS, 4. BARRELS, 5. TREE, 6. STYROFOAM, 7. PAVES, 8. PLANTS
Please see p. 3 for answers to puzzle in last issue.

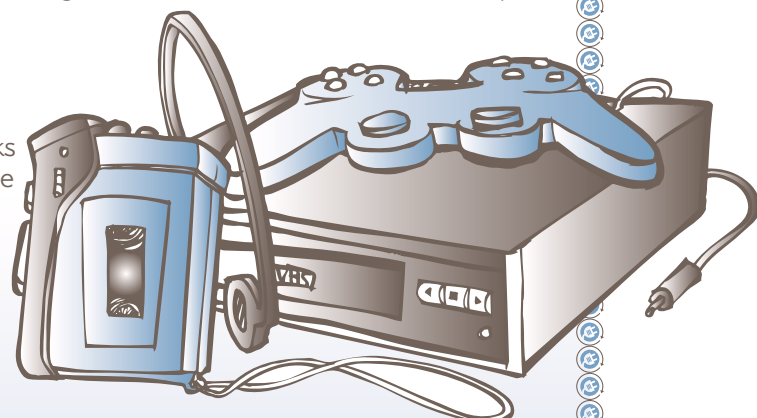
Christmas leftovers: What to do with old electronics, Styrofoam blocks

If your Christmas wishes come true, you may find yourself with outdated electronics that you no longer want and a pile of Styrofoam packing blocks.

Here's how to recycle those leftovers:

❖ Recycle old TVs, computers, monitors and tablets for free at E-Cycle Washington locations, including the Goodwill donation station at the City's Recycling Center. ecyclewashington.org 1-800-RECYCLE

❖ Recycle clean, dry, white Styrofoam packing blocks (all tape removed) for free at the City's Recycling Center (Tacoma Landfill, 3510 S. Mullen St.). Businesses included. TacomaRecycles.org



Answer key for puzzle in the fall issue:

C M B U O J I G F B D O T M B X
B R V Z J (M O N E Y) P P R K T H
C D S L K A X H X W K X D J T G
I Y H M R T G G Y Q D X L I G T
H U V G P N J J Y I C T Q O H S
N M I Y T C F (S M A R T) T P E P
O M S J W A J X Y W E L V R W N
I O Y L V H K X Y D S G Q K H X
P D R I P L W L P Y P O N K V T
I X H F U B R K O Z O L C Y U S
S D J E E L H Y S G N L L Q S C
(L U N C H) A O E T C S Y U S P I
H D P Y F C E K C M I O P V N E
R I T C I (K) O I A U B R D L N
I K Z L Y P S N R U L C V D L C
C U R E U T F N D P E P X T B E

EcoFind

Clean up with an ancient favorite

People have been using soap nuts for centuries, but they've recently gained popularity as an environmentally friendly alternative to traditional laundry detergent.

Soap nuts are actually a berry, not a nut. They contain a natural cleaner that works as a surfactant, or detergent.

They're reported to be gentle on clothes and skin, a benefit for babies and anyone with sensitive skin.

If you're interested, search online for soap nuts and you'll find numerous sources.



Big blue container

Aluminum & tin



- Aerosol cans (empty)
- Aluminum cans
- Foil
- Tin
- Trays

Boxes & cardboard



- Boxes
- Corrugated cardboard
- Plastic-coated cartons

Paper



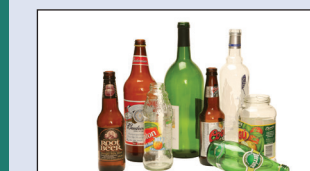
- Newspaper & inserts
- Mixed paper
- Phone books, magazines, catalogs
- Shredded paper

Plastics



- Bags
- Place inside one bag and secure the top (no single bags)
- Bottles
- Jars
- Jugs
- Tubs

Glass & battery bin



Glass bottles & jars (all colors)



Household batteries

Place inside clear bag and secure the top

Big brown container

Yard waste



Leaves, grass clippings and small branches

Food waste



Breads, grains, pasta, cereal



Fruit and vegetables



Meat, poultry, seafood



Dairy and eggs (including shells)



Leftovers/kitchen scraps (including coffee grounds/filters)

Administration – 8 a.m.-5 p.m., Monday-Friday (closed all major government holidays)

General Information (Solid Waste).....(253) 591-5543
Call-2-Haul (8 a.m.-4:30 p.m.).....(253) 573-2468
Information Line (24-hour recorded message only)(253) 565-5955

www.TacomaRecycles.org

Landfill Services – 8 a.m.-6 p.m., daily (closed 4 p.m. Christmas Eve)

Closed: New Year's Day, Fourth of July, Thanksgiving Day, Christmas Day

Household Hazardous Waste Facility(253) 591-5418
Scalehouse(253) 593-7724