



City of Tacoma

## **Public Works Engineering**

**ADDENDUM NO. 2**

**DATE: 9/26/2023**

### **REVISIONS TO:**

**Request for Bids Specification No. PW23-0027F  
Manitou Elementary Safe Routes to School**

### **NOTICE TO ALL BIDDERS:**

This addendum is issued to clarify, revise, add to or delete from, the original specification documents for the above project. This addendum, as integrated with the original specification documents, shall form the specification documents. The noted revisions shall take precedence over previously issued specification documents and shall become part of this contract.

### **REVISIONS TO THE SUBMITTAL DEADLINE:**

The submittal deadline remains the same.

### **REVISIONS TO THE SPECIFICATIONS:**

Remove Section 1-05.4.OPT4.GR1 Contractor Surveying – ADA Features

Remove Section 8-30 CEMENT CONCRETE STAIRWAY AND HAND RAILING in its entirety and replace with Section 8-30 CEMENT CONCRETE STAIRWAY AND HAND RAILING Addendum 2.

### **REVISIONS TO THE PLANS:**

Remove Plan Sheet “D-1” and replace with Plan Sheet “D-1 Addendum 2”

Remove Plan Sheet “RS-1” and replace with Plan Sheet “RS-1 Addendum 2”

### **REVISIONS TO THE PROPOSAL PAGES:**

Remove Item R4 (Schedule B: Roadway) description, “Remove Existing Pavement, Type I, Class A8” and replace with description, “Remove Existing Pavement, Type I, Class A4”\*

\*This is a description change only, quantity remains the same.

NOTE: Acknowledge receipt of this addendum by initialing the corresponding space as indicated on the signature page. Vendors who have already submitted their bid/proposal may contact the Purchasing Division at 253-502-8468 and request return of their bid/proposal for acknowledgment and re-submittal. Or, a letter acknowledging receipt of this addendum may be submitted in an envelope marked Request for Bids Specification No. PW23-0027F Addendum No.2. The City reserves the right to reject any and all bids, including, in certain circumstances, for failure to appropriately acknowledge this addendum.

cc: Josh Lauer, Public Works Engineering

**8-30 CEMENT CONCRETE STAIRWAY AND HAND RAILING  
(March 17, 2003 Tacoma GSP)****8-30.1 Description**

This work shall consist of constructing cement concrete stairways, guards, and hand railings in accordance with details shown in the Standard Plans and these Specifications and in conformity to lines and grades shown in the Plans or as established by the Engineer.

**8-30.2 Materials**

Materials shall meet the requirements of the following sections:

Portland Cement	9-01
Aggregates	9-03
Premolded Joint Filler	9-04.1
Concrete Curing Materials and Admixtures	9-23
Reinforcing Bars	9-07
Paint	9-08

The concrete shall be air-entrained concrete Class 3000 in accordance with the requirements of Section 6-02.

Steel pipe hand railing shall be fabricated from standard weight steel pipe conforming to ASTM Designation A 120.

Wrought iron hand railing shall be fabricated from material conforming to ASTM A207-63T.

**8-30.3 Construction Requirements****8-30.3(1) Excavation**

Excavation shall be made to the required depth and to a width that will permit the installation and bracing of the forms. The foundation shall be shaped and compacted to a firm even surface conforming to the section shown in the Standard Plan. All soft and yielding material shall be removed and replaced with acceptable material.

**8-30.3(2) Forms**

Forms shall be of wood or metal and shall extend for the full depth of the concrete. All forms shall be straight, free from warp, and of sufficient strength to resist the pressure of the concrete without warping. Bracing and staking of forms shall be such that the forms remain in both horizontal and vertical alignment until their removal. After the forms have been set to line and grade, the foundation shall be brought to the required grade and thoroughly wetted approximately 12 hours before placing the concrete.

**8-30.3(3) Placing and Finishing of Concrete**

Front and side edging of stair treads shall be to a radius of 1/2 inch.

Landings for stairways shall be marked as specified for concrete sidewalks except that transverse and longitudinal markings shall be modified as necessary to result in uniform size of squares in each landing. Where gutters are along the side of stairways, the gutter portion of stairway landings shall be smooth finished without markings to conform with the stairway gutter.

#### **8-30.3(4) Cold Weather Work**

The following additional requirements for placing concrete shall be in effect from November 1 to April 1:

- The Engineer shall be notified at least 24 hours prior to placement of concrete.
- All concrete placement shall be completed no later than 2:00 p.m. each day.
- Where forms have been placed and the subgrade has been subjected to frost, no concrete shall be placed until the ground is completely thawed. At that time, the forms shall be adjusted and subgrade repaired as determined by the Engineer.

#### **8-30.3(5) Curing**

Cement concrete stairways shall be cured for a minimum of 72 hours in accordance with Section 5-05.3(13).

#### **8-30.3(6) Hand Rail**

Hand rails for cement concrete stairways shall be constructed at the locations shown on the Plans. The railing may be placed either completely assembled at the time when stairway concrete is placed, or recesses may be provided in the concrete for grouting in the railing posts after the concrete has been placed, finished and cured.

The installed railing shall be in true alignment, proper grade, and all posts plumb.

Welds shall be made by experienced welders and each weld shall be ground and buffed to a smooth surface.

#### **8-30.3(6)A Hand Rail Painting**

Painting shall meet the requirements of Section 6-07 of the Standard Specifications.

Paint shall be as follows:

- Primer shall meet requirements outlined in Section 9.08, "Formula A-6-68- Zinc Dust Zinc Oxide Primer," of the Standard Specifications.
- Finish coat shall meet requirements outlined in Section 9.08, "Formula D-4-57 - Black Enamel," of the Standard Specifications.

#### **8-30.4 Measurement**

Measurement of cement concrete stairway and hand rail will be in accordance with City of Tacoma Standard Plan SU-10.

#### **8-30.5 Payment**

"Cement Conc. Stairway", per linear foot.

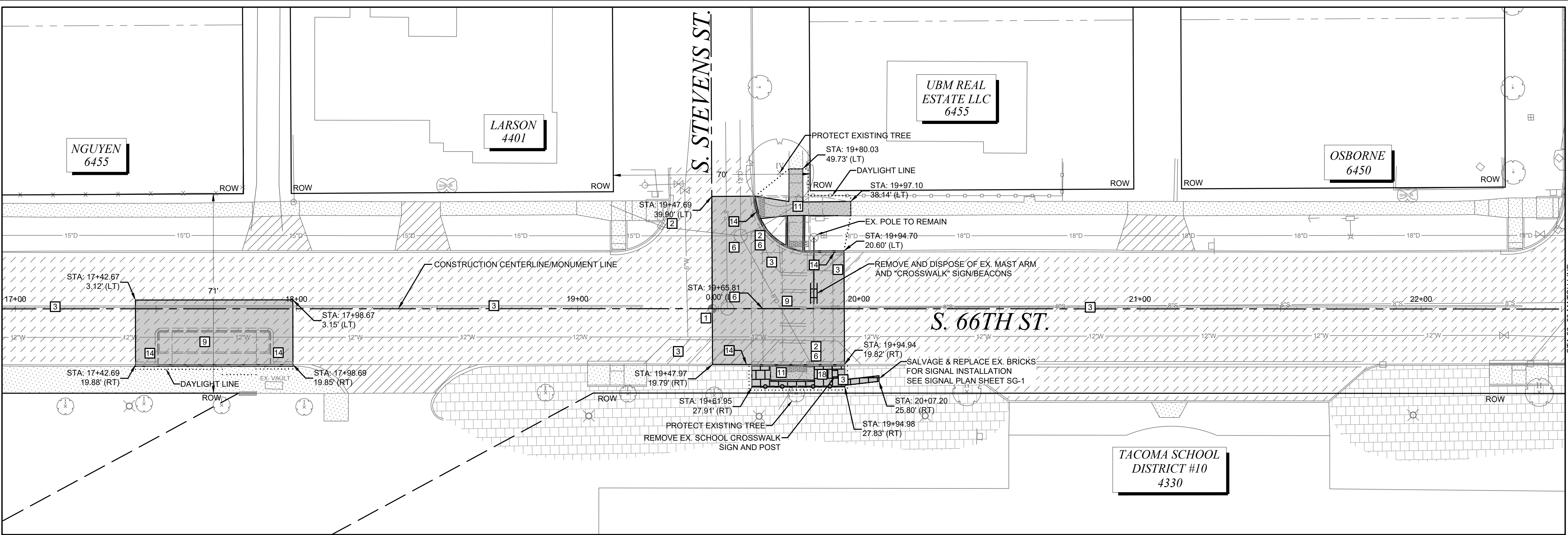
The unit Contract price per linear foot for "Cement Conc. Stairway" shall be full pay for all labor, equipment, and materials required for clearing and grubbing; excavation; subgrade preparation; construction of forms; furnishing and placing reinforcing steel; furnishing and placing of concrete in accordance with the plans and specifications.

"\_\_\_\_ Hand Rail", per linear foot.

The unit Contract price per linear foot for "\_\_\_\_ Hand Rail" shall be full pay for all labor, equipment, and materials, required to construct and complete the railing in accordance with the plan and specification.

**END OF SECTION**





DEMOLITION NOTES

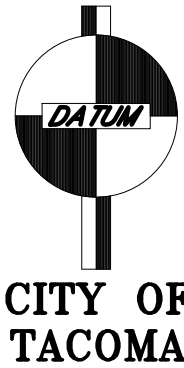
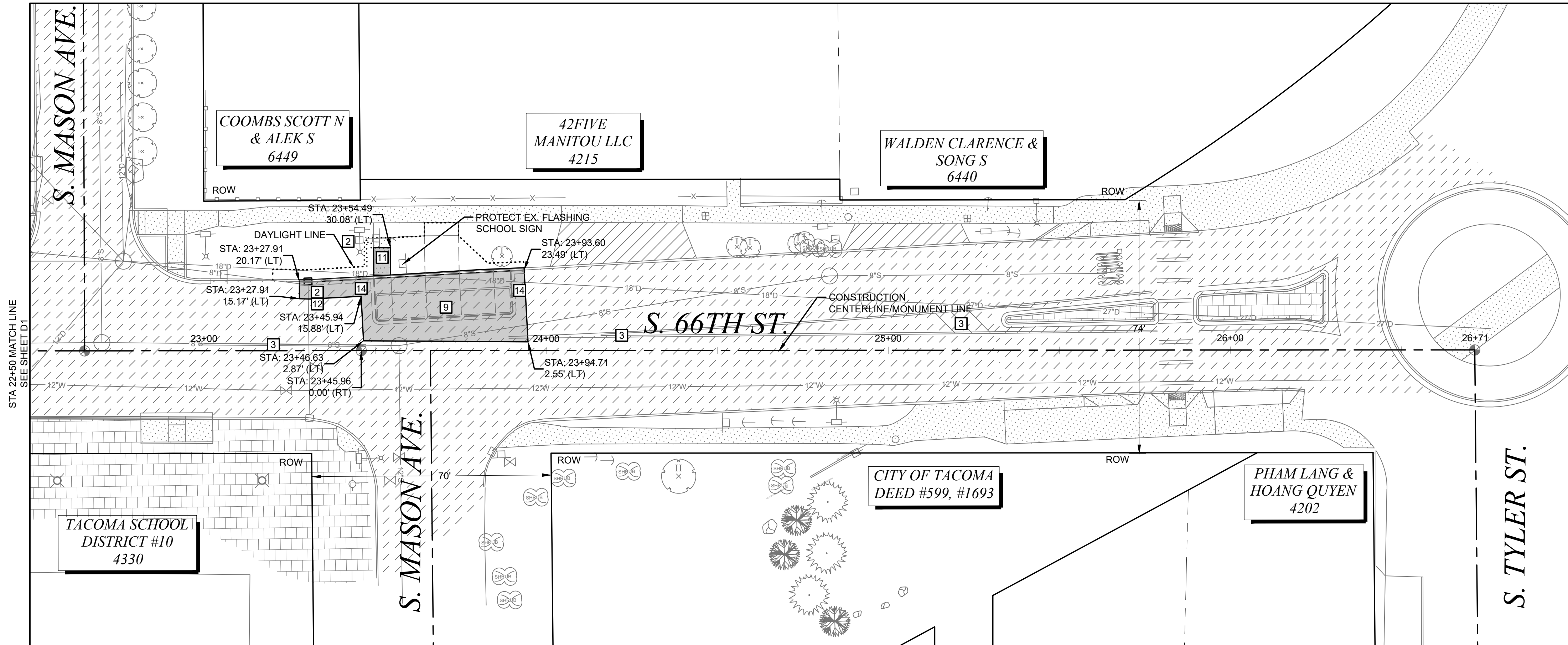
- 1 REMOVE EXISTING SURVEY MONUMENT. IN ACCORDANCE WITH WAC 332-120, CITY OF TACOMA (COT) SURVEY WILL SUBMIT A DEPARTMENT OF NATURAL RESOURCES (DNR) APPLICATION FOR PERMIT TO REMOVE OR DESTROY A SURVEY MONUMENT. WHEN COMPLETE, COT WILL NOTIFY CONTRACTOR WHEN TO PROCEED WITH REMOVAL OF EXISTING MONUMENT COMPLETELY. CONTRACTOR TO INSURE SUITABLE REMOVAL & RESPONSIBLE FOR INSTALLATION OF NEW 3" DIA. SURFACE BRASS DISK (DISK AND LOCATION TO BE PROVIDED BY COT). NEW DISK TO BE SET IN 12" DIA. CONCRETE AT 18" IN DEPTH PER COT STANDARD PLAN SU-01. CONTRACTOR TO PROVIDE ANY EXISTING, NON-DAMAGED, REMOVED MONUMENT CASES TO COT FOR RE-USE.
- 2 PROVIDE INLET PROTECTION TO EXISTING CATCH BASIN PER SPECIFICATION 8-01 UNTIL REMOVAL OR END OF CONSTRUCTION ACTIVITIES
- 3 TO BE REMOVED
- 4 TO BE ADJUSTED BY OTHERS
- 5 TO BE RELOCATED BY OTHERS
- 6 ADJUST TO GRADE PER SPECIFICATION 7-05
- 7 ADJUST EXISTING VALVE PER CITY OF TACOMA STANDARD SU-37
- 8 REMOVE CLASS 'CA' PAVEMENT PER SPECIFICATION 2-14
- 9 REMOVE CLASS 'A4' PAVEMENT PER SPECIFICATION 2-14
- 10 REMOVE CLASS 'A2' PAVEMENT PER SPECIFICATION 2-14
- 11 REMOVE CLASS 'C6' PAVEMENT PER SPECIFICATION 2-14
- 12 REMOVE CATCH BASIN
- 13 REMOVE MANHOLE
- 14 REMOVE CURB PER SPECIFICATION 2-15
- 15 REMOVE EXISTING PIPE
- 16 REMOVE AND REPLACE JUNCTION BOX
- 17 PLANE EXISTING PAVEMENT, SEE CROSS SECTION FOR MATERIALS AND DEPTHS
- 18 REMOVE BRICK PAVEMENT PER SPECIFICATION 2-14

GENERAL NOTES:

1. ALL APPROACHES SHALL BE GRADED AND PLACED TO ENSURE POSITIVE DRAINAGE.
2. ADJUSTING STRUCTURES SUCH AS MANHOLES AND VALVE CHAMBERS SHALL BE DONE PER C.O.T. STANDARD DETAIL SU-25 AND SU-37.
3. WHEN REMOVING AN APPROACH THE LIMITS SHALL BE FROM THE EDGE OF THE APPROACH TO A MINIMUM OF 2' BEHIND THE NEW EDGE OF PAVEMENT.

UTILITY NOTE:

UTILITIES SHOWN ARE FROM SUB-CONSULTANT SURVEY AND CITY OF TACOMA GIS INFORMATION AND MAY NOT BE REPRESENTATIVE OF ACTUAL LOCATION. IT IS THE CONTRACTOR'S RESPONSIBILITY TO VERIFY THROUGH UTILITY LOCATE SERVICES, UTILITY AS- BUILT DRAWINGS, RECORD DRAWINGS AND POTHOLES THE HORIZONTAL AND VERTICAL LOCATION OF EXISTING UTILITIES. ALL MEANS AND METHODS TO RESEARCH AND VERIFY EXISTING UTILITY LOCATIONS SHALL BE INCIDENTAL TO THE ASSOCIATED WORK.



HORIZ. DATUM: N.A.D. 83/91  
VERT. DATUM: N.G.V.D. 29  
BENCH MARK: SBM  
CASED BRASS DISK @ INT. OF  
S. 66TH ST. & CHEYENNE ST.  
ELEVATION = 256.98

CALL BEFORE YOU DIG

EXISTING UTILITIES ARE SHOWN IN APPROXIMATE LOCATIONS ONLY PER BEST AVAILABLE INFO, AND MAY BE INCOMPLETE. CONTRACTOR SHALL BE RESPONSIBLE FOR LOCATING, POTHOLES AND AVOIDING ALL EXISTING UTILITIES.

CALL TWO BUSINESS DAYS BEFORE YOU DIG  
(1-800-424-5555) OR VISIT ONLINE: [www.callbeforeyoudig.org](http://www.callbeforeyoudig.org)



ADDENDUM #1

NO REVISION

DATE

APPD

FINAL  
CONSTRUCTION  
CHECKED

BY

DATE

FIELD BOOKS

DATE

DESIGNED

DRAWN

DRAWING NAME

SCALE

CHECKED

PROJECT NAME

SRTS MANITOU-NOTES

1" = 20'

BCW

RWG

MANITOU-SRTS



CITY OF TACOMA  
DEPARTMENT OF PUBLIC WORKS

DEMOLITION PLANS  
MANITOU PARK ELEMENTARY - SRTS  
S. 66TH ST. FROM S. CHEYENNE ST. TO S. TYLER ST.

PWK-G0047

SHEET NO.

6

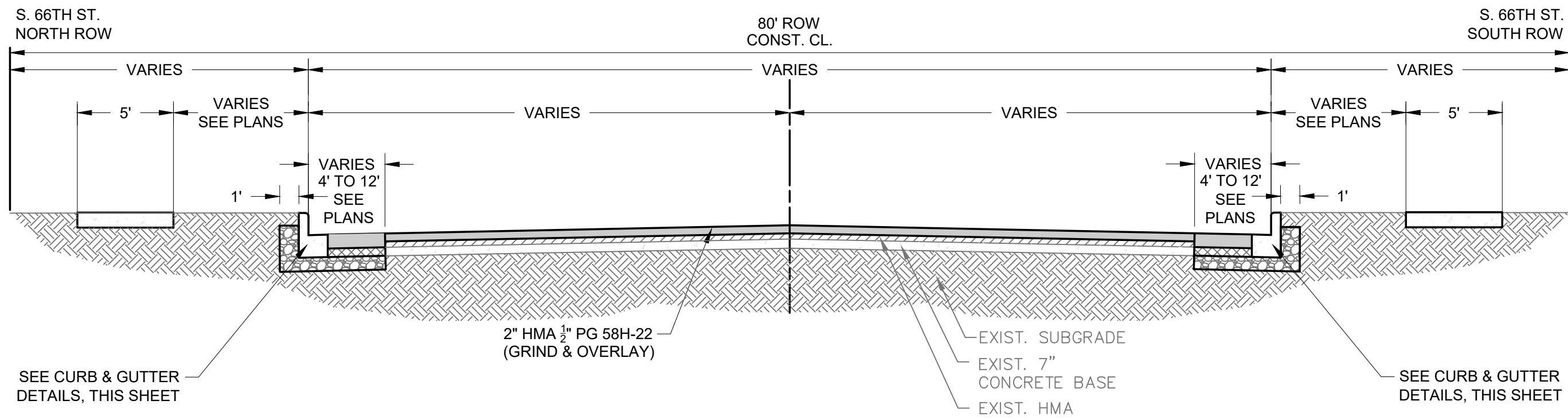
SHEET

D-1

OF

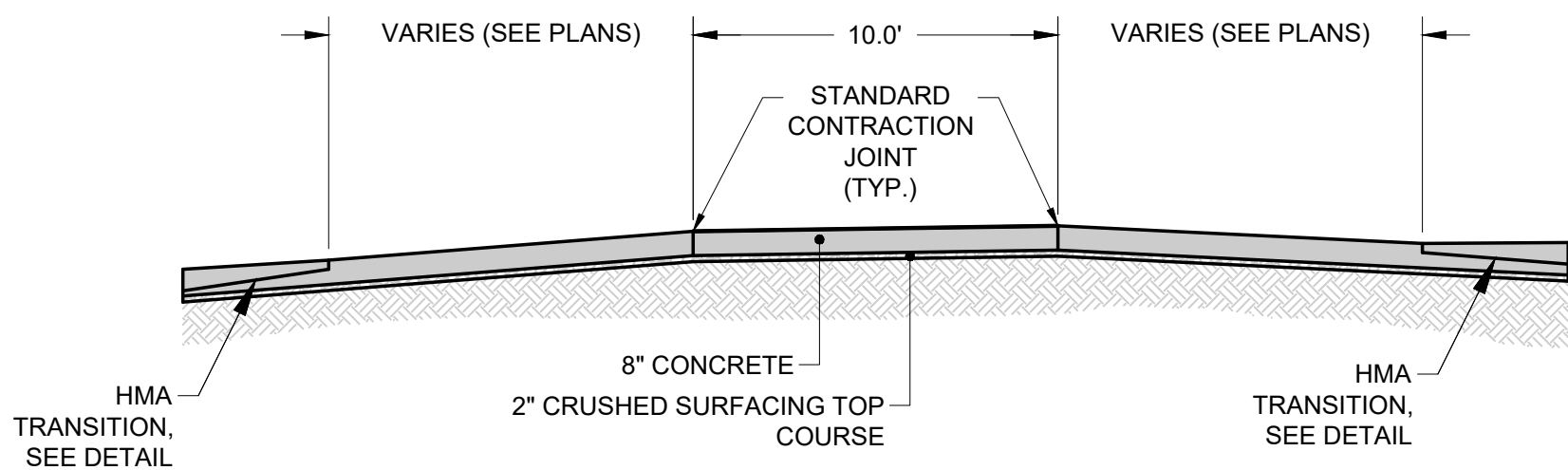
D-1





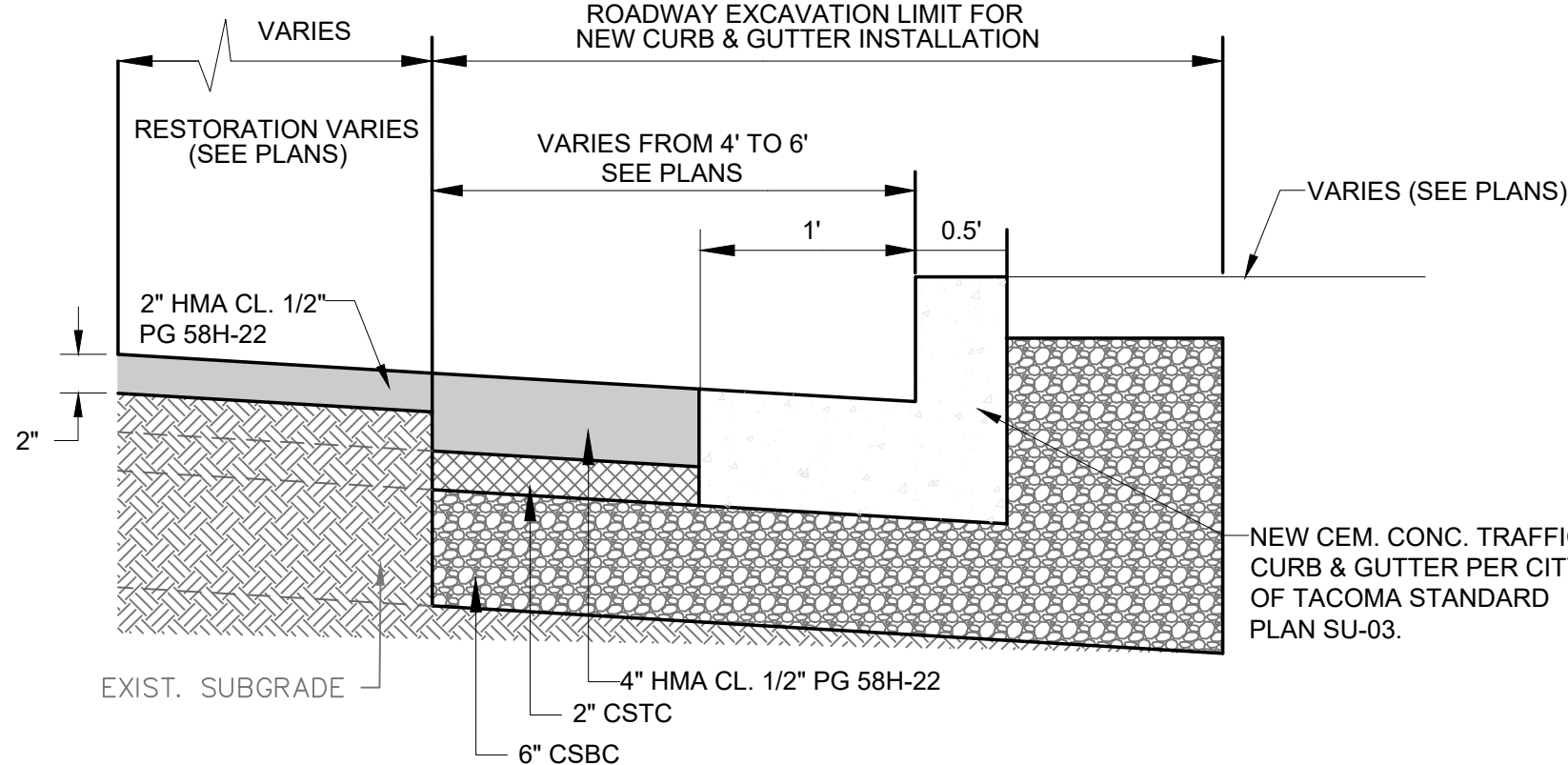
**PROPOSED CROSS-SECTION**

N.T.S.  
STA 19+47.87 TO 19+65.81



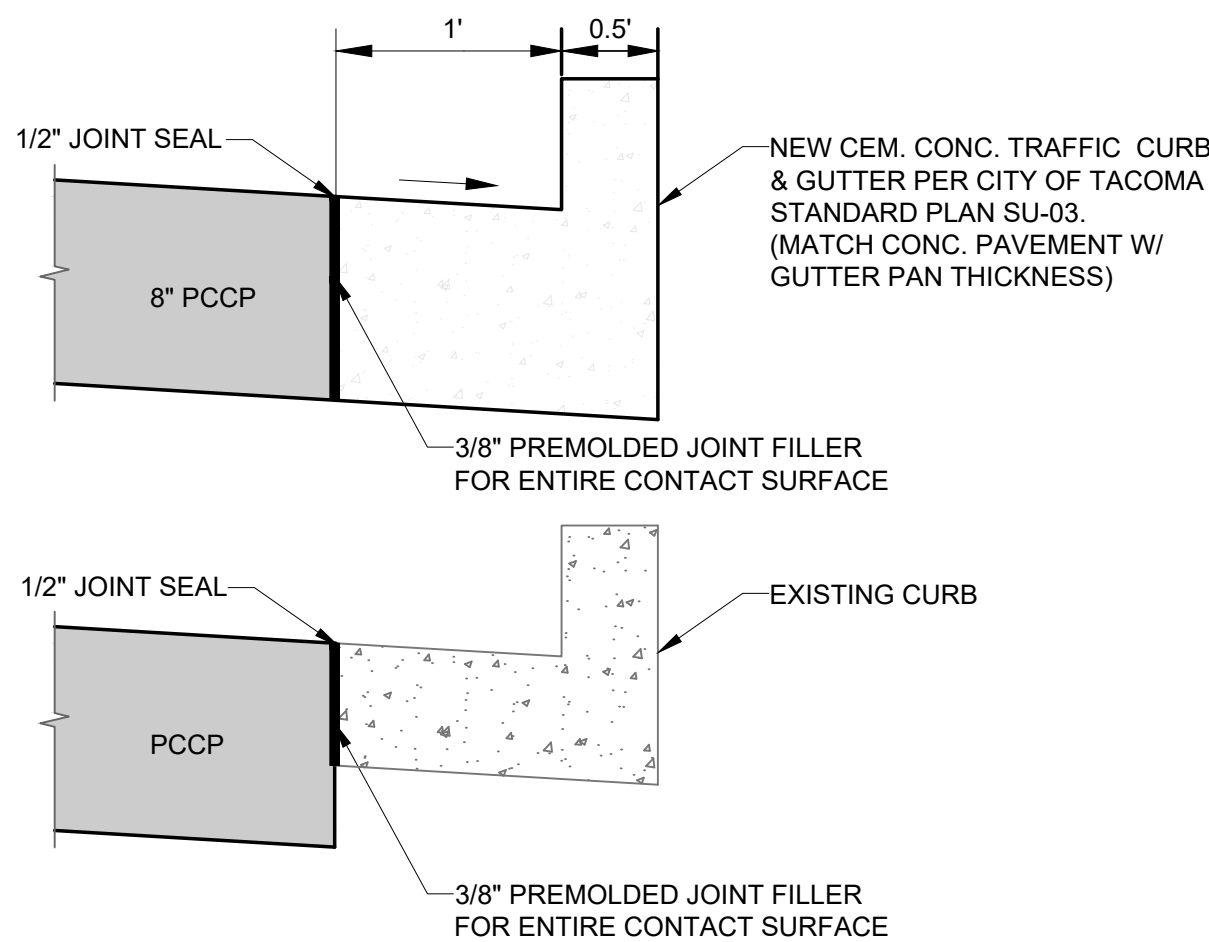
**MID-BLOCK RAISED CROSSING**

N.T.S.



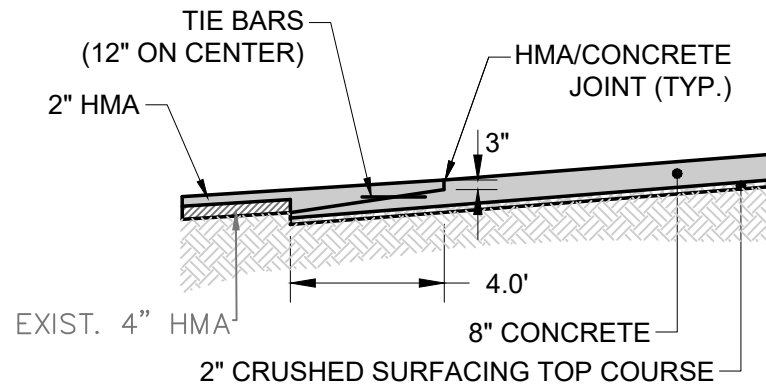
**TYPICAL ROADWAY EXCAVATION FOR NEW CURB & GUTTER INSTALLATION**

ARTERIAL STREETS  
N.T.S.



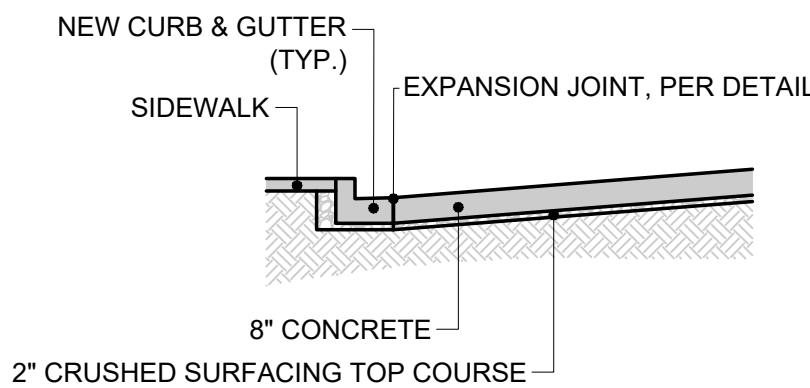
**EXPANSION JOINT AT CONCRETE CURB & GUTTER**

N.T.S.



**HMA TRANSITION DETAIL**

N.T.S.



**RAISED CROSSING CURB DETAIL TYP. SECTION**

N.T.S.

**CALL BEFORE YOU DIG**

EXISTING UTILITIES ARE SHOWN IN APPROXIMATE LOCATIONS ONLY PER BEST AVAILABLE INFO, AND MAY BE INCOMPLETE. CONTRACTOR SHALL BE RESPONSIBLE FOR LOCATING, POTHOLING AND AVOIDING ALL EXISTING UTILITIES.

CALL TWO BUSINESS DAYS BEFORE YOU DIG  
(1-800-424-5555) OR VISIT ONLINE: [www.callbeforeyoudig.org](http://www.callbeforeyoudig.org)



ADDENDUM #1

NO

REVISION

DATE

APPD

FINAL  
CONSTRUCTION  
CHECKED

BY

DATE

FIELD BOOKS

DATE

DESIGNED

DRAWN

DRAWING NAME

DATE

DESIGNED

DRAWN

DRAWING NAME

BCW

RWG

MANITOU-SRTS

DCS

MANITOU-SRTS

MANITOU-SRTS\_RDSEC.DWG

N.T.S.

DCS

MANITOU-SRTS

MANITOU-SRTS\_RDSEC.DWG



CITY OF TACOMA  
DEPARTMENT OF PUBLIC WORKS

CROSS SECTION DETAILS

MANITOU PARK ELEMENTARY - SRTS

S. 66TH ST. FROM S. CHEYENNE ST. TO S. TYLER ST.

PWK-G0047

SHEET NO.

5

SHEET

RS-1

OF

RS-1