



City of Tacoma
TACOMA POWER/TRANSMISSION & DISTRIBUTION

REQUEST FOR BIDS PT23-0017F
Underground Precast Concrete Vaults

Submittal Deadline: 11:00 a.m., Pacific Time, Tuesday, August 22nd, 2023

Submittals must be received by the City's Procurement and Payables Division prior to 11:00 a.m. Pacific Time. For electronic submittals, the City of Tacoma will designate the time of receipt recorded by our email, sendbid@cityoftacoma.org, as the official time of receipt. This clock will be used as the official time of receipt of all parts of electronic bid submittals. Late submittals will be returned unopened and rejected as non-responsive.

Submittal Delivery: Sealed submittals will be received as follows:

By Email:

sendbid@cityoftacoma.org

Maximum file size: 35 MB. Multiple emails may be sent for each submittal.

Bid Opening: Submittals must be received by the City's Procurement and Payables Division prior to 11:00 a.m. Pacific Time. Sealed submittals in response to a RFB will be opened Tuesday's at 11:15 a.m. by a purchasing representative and read aloud during a public bid opening held at the Tacoma Public Utilities Administrative Building North, 3628 S. 35th Street, Tacoma, WA 98409, conference room M-1, located on the main floor. They will also be held virtually Tuesday's at 11:15 a.m. Attend [via this link](#) or call 1 (253) 215 8782. Submittals in response to an RFP, RFQ or RFI will be recorded as received. As soon as possible, after 1:00 PM, on the day of submittal deadline, preliminary results will be posted to www.TacomaPurchasing.org.

Solicitation Documents: An electronic copy of the complete solicitation documents may be viewed and obtained by accessing the City of Tacoma Purchasing website at www.TacomaPurchasing.org.

- [Register for the Bid Holders List](#) to receive notices of addenda, questions and answers and related updates.
- Click here to see a [list of vendors registered for this solicitation](#).

Pre-Proposal Meeting: A pre-proposal meeting will not be held.

Project Scope: Supply of items that meet the minimum requirements as to quality, function, and capacity as outlined in the Special and Technical Provisions

Estimate: \$500,000 for initial three-year term

Paid Sick Leave: The City of Tacoma requires all employers to provide paid sick leave as set forth in Title 18 of the Tacoma Municipal Code and in accordance with State of Washington law.

Americans with Disabilities Act (ADA Information: The City of Tacoma, in accordance with Section 504 of the Rehabilitation Act (Section 504) and the Americans with Disabilities Act (ADA), commits to nondiscrimination on the basis of disability, in all of its programs and activities. Specification materials can be made available in an alternate format by emailing the contact listed below in the *Additional Information* section.

Title VI Information:

"The City of Tacoma" in accordance with provisions of Title VI of the Civil Rights Act of 1964, (78 Stat. 252, 42 U.S.C. sections 2000d to 2000d-4) and the Regulations, hereby notifies all bidders that it will affirmatively ensure that in any contract entered into pursuant to this advertisement, disadvantaged business enterprises will be afforded full and fair opportunity to submit bids in response to this invitation and will not be discriminated against on the grounds of race, color, national origin in consideration of award.

Additional Information: Requests for information regarding the specifications may be obtained by contacting Sara Bird, Senior Buyer by email to sbird@cityoftacoma.org.

Protest Policy: City of Tacoma protest policy, located at www.tacomapurchasing.org, specifies procedures for protests submitted prior to and after submittal deadline.



Meeting sites are accessible to persons with disabilities. Reasonable accommodations for persons with disabilities can be arranged with 48 hours advance notice by calling 253-502-8468.

SPECIFICATION CONTENTS

SUBMITTAL CHECKLIST SUBMITTAL GENERAL INFORMATION

SECTION 1 – SPECIAL PROVISIONS

1.01 - SCOPE OF BID

- 1.01.1- PURPOSE
- 1.01.1A - AWARD OF CONTRACT
- 1.01.2 - DEFINITIONS
- 1.01.3 - QUALIFICATIONS
- 1.01.3A - REFERENCES
 - 1.01.3A.1 - CHANGE OF OWNERSHIP
 - 1.01.3A.2 - DEFINITION OF REFERENCED UTILITIES
- 1.01.3B - RESPONDENTS ORIGINATING FROM OUTSIDE THE UNITED STATES
- 1.01.3C - MANUFACTURER REPRESENTATION
- 1.01.4 - SUB-VENDORS

1.02 - RESPONDENT'S PROPOSAL

- 1.02.1 - RESPONDENT REQUIREMENTS
- 1.02.1A - SIGNATURE PAGE
- 1.02.2 - NON-RESPONSIVE
- 1.02.3 - ALTERNATE BIDS
- 1.02.3A - ALTERNATE BID PROPOSALS
- 1.02.3B - ALTERNATE MATERIALS
- 1.02.3C - ALTERNATE EVALUATION

1.03 – SUPPLEMENTAL INFORMATION

- 1.03.1 – MANUFACTURER'S DRAWINGS
- 1.03.2 – MANUFACTURER'S QUALITY ASSURANCE POLICY

1.04 – EVALUATION & AWARD

- 1.04.1 – AWARD OF CONTRACT
- 1.04.1A – PRICING CONDITIONS OF SPECIAL SECTION 2.08.3
- 1.04.2 – EVALUATION CRITERIA
- 1.04.2A – DETERMINATION OF RESPONDENT'S ABILITIES
- 1.04.2B – OTHER ELEMENTS

1.05 – CONTRACT

- 1.05.1 – CONTRACT PERIOD
- 1.05.2 – CONTRACT EXTENSIONS

1.06 – SAFETY AND STANDARDS

1.07 – MATERIALS, DESIGN, WORKMANSHIP, AND TRADE NAMES

1.08 – PRICING AND PURCHASE ORDERS

- 1.08.1 – QUANTITIES AND PURCHASE ORDERS
- 1.08.1A – WORKING DAYS
- 1.08.2 – FREIGHT CHARGES LESS THAN FULL LOAD
- 1.08.3 – SEMI-ANNUAL PRICING ADJUSTMENT
- 1.08.3A – FIRST ADJUSTMENT AFTER AWARD
- 1.08.3B – SCHEDULE OF UNIT PRICE ADJUSTMENTS

1.08.3C – APPLICATION

1.09 – DELIVERY

1.09.1 – FORCE MAJEURE

1.09.1A – TERMINATION OF PURCHASE ORDER RELEASE(S)

1.09.1B – DUE DILIGENCE

1.10 – SHIPPING REQUIREMENTS

1.10.1 – LABELING

1.10.2 – SUBCONTRACTOR (SHIPPING COMPANY)

1.10.3 – SHIPPING NOTICE

1.10.4 – SUPPLIER MINIMUM INVENTORY

1.10.5 – DELIVERY TIMES

1.10.6 – DELIVERY LOCATION

1.10.6A – ALTERNATE DELIVERY LOCATIONS

1.11 – INSPECTION & WARRANTY

1.11.1 – FAILURE OF INSPECTION

1.11.2 – FACTORY INSPECTION

1.11.2A – QUALITY ASSURANCE AUDITS

1.11.2B - QUALITY ASSURANCE DOCUMENTATION

1.11.2C - FACTORY ASSISTANCE DURING INSPECTION

1.11.3 - WARRANTY

1.11.3A - RETURN OF CONCRETE VAULTS

1.11.3B - RETURN TIME FRAME

1.11.3C - WARRANTY PERIOD EXTENSION

1.12 – INVOICES & PAYMENT

1.12.1 – INVOICES

1.12.2 – PAYMENT

1.12.2A – UNSATISFACTORY PERFORMANCE

1.13 - EQUITY IN CONTRACTING

1.14 - CITY OF TACOMA STANDARD TERMS AND CONDITIONS

SECTION 2 – TECHNICAL PROVISIONS

2.01 – STRUCTURAL

2.01.1 – INDUSTRY STANDARDS

2.01.2 - CONCRETE

2.01.3 - REINFORCEMENT/STRUCTURAL STEEL

2.01.4 - DESIGN LOADING

2.02 – INTERNALLY GROUNDED VAULTS

2.02.1 - ELECTRODES

2.02.1A - GROUNDING/BONDING INSERT CONNECTORS

2.02.1B - GROUNDING INSERT CONNECTORS - VALUT BASE

2.02.1C - BONDING INSERT CONNECTOR - VAULT COVER, MIDDLE SECTIONS AND RISERS

2.02.1D - LABELING OF INSERTS

2.03 – VAULT COVERS

2.03.1 – HINGED DOORS

2.03.1A – ELECTRICAL BONDING

2.03.2 – COVER WITH BLOCKOUTS

- 2.03.3 – MANHOLD FRAMES AND COVERS
- 2.03.4 – LOGO “TACOMA POWER”
- 2.03.5 – NON-SKID COVERS
- 2.03.6 – SUMP PUMP DRAIN
- 2.03.7 – COVER FOR 10X20 PANEL VAULT OPENING

2.04 – VAULT BASE DETAILS

- 2.04.1 – EQUIPMENT MOUNTING CHANNEL
- 2.04.2 – SUMP
- 2.04.2A – 233 VAULTS
- 2.04.2B – 444, 554, 774, AND 5106 VAULTS
- 2.04.2C – 684, 687, AND 810 VAULTS
- 2.04.2D – 814, 818, AND 10X20 VAULTS
- 2.04.3 – KNOCKOUTS
- 2.04.3A – GROUND ROD KNOCKOUTS
- 2.04.3B – LIFTING HOLD KNOCKOUTS –E3, 233, 444, AND 554 VAULTS
- 2.04.4 – SEALING OF SECTIONAL VALUTS – 687, 810, 814, 818, AND 10X20 VAULTS
- 2.04.5 – INTERIOR CORNERS – 444, 554, AND 774 VAULTS

2.05 – REQUIRED INFORMATION ON EXTERIOR OF EACH UNIT

2.06 – LIFTING PROVISIONS & RIGGING EYES

- 2.06.1 – LIFTING ANCHORS, RIGGING EYES AND STRAP LIFTING NOTCH-COVERS
- 2.06.1A – LIFTING ANCHORS- 233, 444, 554, 684,687, 774,810, 5106, AND E3 VAULTS
AND COVER FOR 10X20 PANEL VAULT OPENING
- 2.06.1B – LIFTING ANCHORS AND RIGGING EYES – 814, 818, AND 10X20 VAULTS
- 2.06.1C – STRAP LIFTING NOTCH – 444 AND 554 VAULTS
- 2.06.2 – LIFTING ANCHORS AND RIGGING EYES – LOWER SECTION
- 2.06.2A – RIGGING EYES – 444, 554, AND 774 VAULTS
- 2.06.2B – RIGGING EYES – 810 VAULTS
- 2.06.2C – RIGGING EYES – 684, 687, AND 5106 VAULTS
- 2.06.2D- LIFTING ANCHORS AND RIGGING EYES – 814, 818, AND 10X20 VAULTS
- 2.06.3 – RIGGING EYES – MIDDLE SECTION
- 2.06.3A – RIGGING EYES – 810 VAULTS
- 2.06.3B – RIGGING EYES – 814 AND 818 VAULTS
- 2.06.4 – RIGGING EYES – RISER SECTION – 814 AND 818 VAULTS
- 2.06.5 – RIGGING EYES – 10X20 VAULT PANELS

2.07 – MISCELLANEOUS PRECAST PRODUCTS

- 2.07.1 – ANCHOR – 20 IN. DIAMETER X 4 IN. THICK
- 2.07.2 – EQUIPOTENTIAL PAD – 4 FT. X 6 FT. X 6 IN.
- 2.07.3 – GUARD POST/BOLLARD – 6 FT X 9 IN.

CITY OF TACOMA STANDARD TERMS AND CONDITIONS

APPENDIX A - REQUIRED FORMS

APPENDIX B - MAP OF SERVICE AREA

APPENDIX C – STANDARD A-UG-1150

APPENDIX D – MEADOWBURKE ANCHOR DETAIL

APPENDIX E - ANCHOR DRAWING

APPENDIX F - EQUIPOTENTIAL PAD

APPENDIX G - GUARD POSTS


APPENDIX H - PRODUCER PRICE INDEX SERIES # PCU32739032739014

APPENDIX I - CONTRACT SAMPLE

SUBMITTAL CHECKLIST

This checklist identifies items to be included with your submittal. Any submittal received without these required items may be deemed non-responsive and may not be considered for award. Please do not include the entire specification document with your submittal.

Submittals must be received by the City of Tacoma Purchasing Division by the date and time specified in the Request for Bids page at the front of this Specification or subsequent addenda.

The following items, in this order, make up your submittal package:		
1	One electronic copy of your complete submittal package in PDF format.	
2	Signature Page with <u>signature</u> , including acknowledgement of any addenda. (Appendix A) This form is intended to serve as the first page of your submittal.	
3	Proposal Sheets (Appendix A)	
4	Substitution Request Form (if needed – Appendix A) – See Submittal General Information section for instructions	
5	Supplemental Information - (Section 1.03) <ul style="list-style-type: none"> > Manufacturer's Drawings > Manufacturer's QC policy 	
After award, the following documents will be executed:		
1	Contract issued by City of Tacoma per Section 1.04.1	

SUBMITTAL GENERAL INFORMATION

PRE-SUBMITTAL QUESTIONS

- A. Questions and requests for clarification of these Specifications may be submitted in writing by **8:00 a.m., Pacific Time, July 28th, 2023**, via email addressed to the Purchasing contact below. Questions received after this date and time may not be answered.
1. Please indicate the specification number and title in the email subject line.
 2. Present your questions in MS Word format or directly in the body of the email message. If applicable, cross reference the specific section of the RFB.
 3. Questions will not be accepted by telephone or fax.
 4. Questions marked confidential will not be answered.
 5. Individual answers will not be provided directly to Respondents.
 6. The City reserves the discretion to group similar questions to provide a single answer or not to respond when the requested information is confidential.
 7. The City will not be responsible for unsuccessful submittal of questions.
- B. Written answers to all questions will be posted on the Purchasing website at www.TacomaPurchasing.org on or about **August 3rd, 2023**. Navigate to *Contracting Opportunities / Supplies*, and scroll to this RFB. A notice will not be posted with the Specification if no questions are received.
- C. The answers are not typically considered an addendum.
- D. To receive notice of the posted answers, you must register as “bid holder” for this solicitation.

Communication	Addressee
For all questions regarding Specification PT23-0017F	Sara Bird Senior Buyer email sbird@cityoftacoma.org

SUBSTUTION REQUESTS

- A. If the Respondent elects to bid alternative equipment, materials, or processes where allowed, a Substitution Request Form (Appendix #A) must be submitted by email to [Sara Bird, sbird@cityoftacoma.org](mailto:sbird@cityoftacoma.org), a minimum of **ten (10) business days** prior to the submittal deadline. Substitution Request Forms received after this time will not be accepted. Respondents will be notified of an approved or rejected Substitution Request Form no later than **five (5) business days** prior to the submittal deadline. See Section 1.02.3.

REVISIONS TO SPECIFICATION

- A. All revisions to this specification will be in the form of written addenda, and no oral revision should be relied upon for any purpose. In the event it becomes necessary to revise any part of this RFB, addenda will be issued to registered planholders and posted on the Purchasing website at www.TacomaPurchasing.org: Navigate to *Current Contracting Opportunities / Supplies Solicitations*, and scroll to this RFB. Failure to acknowledge addenda may result in a submittal being deemed non-responsive.

CALENDAR OF EVENTS

This is a tentative schedule only and may be altered at the sole discretion of the City.

Contract will be issued after Public Utility Board approval.

The anticipated schedule of events concerning this RFB is as follows:

Question Deadline:	7/28/2023
City Response to Questions:	8/03/2023
Substitution Request Due:	8/08/2023
Substitution Acceptance/Rejection, on or about:	8/15/2023
Submittal Due Date:	8/22/2023
Anticipated Award Date, on or about:	9/18/2023
Public Utility Board, on or about:	9/13/2023

SECTION I – SPECIAL PROVISIONS

1.01 - SCOPE OF BID

1.01.1 - PURPOSE

The purpose of these specifications is to define the scope for supply of items that meet the minimum requirements as to quality, function, and capacity as outlined in the Special and Technical Provisions that follow.

1.01.1A - AWARD OF CONTRACT

With this solicitation, the City intends to award a single contract and does not anticipate award to multiple Suppliers. Regardless, the City reserves the right to award to one or more Suppliers, or make no award, in the best interest of the City.

1.01.2 - DEFINITIONS

For the purposes of this specification, the following definitions shall apply:

Term	Definition
RESPONDENT	A potential supplier offering a proposal to supply equipment in accordance with this specification
SPECIFICATION	This document, detailing the scope of supply
SUPPLIER	The Respondent(s) awarded a contract pursuant to these Specifications
SUBVENDOR	Any supplier of parts, materials, and/or services to the vendor under this specification
EQUIPMENT/ MATERIAL	A fully functional piece of equipment/material supplied and tested in accordance with this specification
MANUFACTURER	The original manufacturer of the equipment/material
ENGINEER	The project engineer and/or contract administrator
CITY	The City of Tacoma, Tacoma Power
DELIVERY TIME	The length of time starting at the date of Supplier receipt of a purchase order, purchase order release, or Notice to Proceed and ending at the time that the item(s) are received at Tacoma Power

1.01.3 – QUALIFICATIONS

To further detail the requirements of Section 1.20 of the City of Tacoma Standard Terms and Conditions, only submittals which offer products from manufacturers experienced in the supply of materials as detailed within these Specifications over a period of five (5) years or more will be considered responsive. The City shall be the sole judge of the Respondent's ability to meet the requirements of this paragraph.

1.01.3A - REFERENCES

Each Respondent shall complete the "References Data Sheet" as included in the Proposal Sheets. A minimum of seven (7) US utility references over the past five (5) years is required.

1.01.3A.1 - CHANGE OF OWNERSHIP

References are intended to be for material/equipment currently supplied under the proposed manufacturer's name. References for material/equipment that has been previously supplied under a different Company's name shall be clearly noted on the reference list.

1.01.3A.2 - DEFINITION OF REFERENCED UTILITIES

The Respondent shall list as references, only those utilities that have purchased material/equipment as the Respondent proposes to offer to the City, on this proposal.

1.01.3B - RESPONDENTS ORIGINATING FROM OUTSIDE THE UNITED STATES

Respondents that originate bids from outside the legal jurisdiction of the United States of America will be subject to the City of Tacoma's Legal Department opinion as to the viability of possible litigation pursuant to a supply contract resulting from these Specifications. If it is the opinion of the City of Tacoma's Legal Department that any possible litigation would be beyond reasonable cost and/or enforcement the bid may be excluded from evaluation.

1.01.3C – MANUFACTURER REPRESENTATION

The supplier shall have a representative or agent who will provide field and technical support. The agent shall be authorized to coordinate returns and repairs requested by Tacoma Power.

1.01.4 - SUB-VENDORS

The Respondent shall list, on the "Proposal – Sub-Vendor" sheet, all sub-vendors it intends to use to fulfill requirements in any part of these specifications. Included in the listing shall be the sub-vendor's name, address, and telephone number; contact name; and description of work they will perform. It shall be the responsibility of the awarded Supplier to police, enforce, and ensure that all work performed by any sub-vendor shall be in accordance with these Specifications.

The Respondent agrees that should the identified sub-vendor(s) become unavailable for any reason, the Supplier(s) shall identify a suitable replacement, subject to the approval of the City. In addition, the City reserves the right to request and require a change in the sub-vendor(s) utilized by the Supplier based upon a history of poor performance or evidence of unsafe work practices. Sub-vendor organizational changes are expected to be communicated to the City immediately. Failure to do so could result in the cancellation of the Contract.

1.02 - RESPONDENT'S PROPOSAL

1.02.1 - RESPONDENT REQUIREMENTS

Submittals must be sent electronically to sendbid@cityoftacoma.org by the date and time specified in the Calendar of Events and in the Submittal Check List.

The bid package submitted must be returned with the Respondent's proposal filled in as directed, including all data requested in the Provisions of these Specifications. All blank spaces on the Proposal forms will be properly populated.

1.02.1A - SIGNATURE PAGE

The "Signature Page" included with the original submittal shall be **signed in INK** by the responsible company official and include printed or typewritten designation of the office they hold in the company.

1.02.2 - NON-RESPONSIVE

Bid proposals that claim exceptions to the terms and conditions stated within these Specifications may be declared non-responsive and the bid proposal may be rejected.

1.02.3 - ALTERNATE BIDS

All bids including alternates shall include an original Signature Page. Each bid package submitted must be returned with the Respondent's proposal completed as directed, including all data requested.

1.02.3A - ALTERNATE BID PROPOSALS

Alternate bid proposals must be submitted as a separate bid package and identified as "**ALTERNATE**".

1.02.3B - ALTERNATE MATERIALS

If the Respondent elects to bid alternative equipment a Substitution Request Form (Appendix #A) must be submitted by email to Sara Bird, sbird@cityoftacoma.org, a minimum of **ten (10) business days** prior to the submittal deadline. Respondents will be notified of an approved or rejected Substitution Request Form no later than **five (5) business days prior to the submittal deadline**.

An approved Substitution Request Form shall not indicate acceptance of the alternate by the City. Sufficient data to enable the City to evaluate the proposed equal must be submitted with the bid. The data shall demonstrate that the alternative item is of a quality equal to or better than that specified and has the required characteristics for the intended use. Failure to submit such data will render the bid **non-responsive**.

1.02.3C - ALTERNATE EVALUATION

Upon request, the Respondent shall furnish to the City, within five (5) working days, additional information relating to such alternative items as the City may require. The City shall be the sole judge as to the equality and suitability of a proposed alternate. The decision of the City as to what items are equal shall be final and conclusive per City of Tacoma Standard Terms and Conditions Section 1.36.

1.03 – SUPPLEMENTAL INFORMATION

The information requested in the following section shall be included with the submittal and will be referenced during evaluation process. Refer to Special Provisions Section 1.04.2.

1.03.1 – MANUFACTURER'S DRAWINGS

The Respondent is to include with their submittal manufacturing drawings for each vault design they wish to provide to Tacoma Power. The manufacturer's drawings submitted should be reflective of the requirements listed in Tacoma Power Standard A-UG-1150 attached as Appendix "C".

Drawings will be accepted for bid evaluation purposes that do not contain full details of construction. An approved set of detailed manufacturer's drawings consistent with the requirements listed in Technical Provisions Section 2 and stamped by a licensed engineer will be required prior to award of a contract.

1.03.2 - MANUFACTURER'S QUALITY ASSURANCE POLICY

One (1) copy of the manufacturer's internal "Quality Assurance" policy for the material to be supplied shall be included with the submittal. Documentation shall include third party certification of ISO 9000 series and/or NPCA plant certification if achieved. Documentation shall include descriptions of all QC tests.

1.04 - EVALUATION & AWARD

Respondents are to provide unit pricing for each line item, which will be summed for a subtotal price. Subtotals will be compared amongst each Respondent, including any offered payment discount terms of 20 days or more.

1.04.1 - AWARD OF CONTRACT

The Contract will be awarded to the lowest responsible Respondent(s) delivering a responsive submittal in compliance with these Specifications, provided such submittal is reasonable and it is in the best interests of the City to accept. The City, however, reserves the right to reject any and all bids and to waive any informalities in bids received. The award of this contract will not be based on cost alone, as other factors will be considered in the evaluation criteria.

1.04.1A - PRICING CONDITIONS OF SPECIAL SECTION 1.08.3

Those bids that do not accept the pricing conditions of Special Provisions Section 1.08.3 may be considered **non-responsive**.

1.04.2 - EVALUATION CRITERIA

In evaluating the proposals, the City will consider any or all of the following:

- Minimum order requirements
- Respondent's responsibility based on, but not limited to:
 1. Ability, capacity, organization, technical qualifications, and skill to perform the contract or provide the services required.
 2. References, judgment, experience, efficiency, and stability.
 3. Sufficiency of financial resources.
 4. Quality of performance of previous contracts or services with utilities within the United States.

1.04.2A- DETERMINATION OF RESPONDENT'S ABILITIES

In order for Tacoma Power to determine the Respondents ability to supply the materials outlined in this specification the following information will be considered as part of the evaluation.

1. Information submitted in the manufacturer's Quality Assurance Policy & Manufacturing Plant Certification documents as requested in the Bidders Checklist.
2. Evidence of local/regional representation and responsive service of the bidder. Evaluation will consider bidder responses provided on the Proposal Sheets and experiences acquired from utility references per section 1.01.3A.
3. Capabilities of the manufacturer's plant facility. If requested, the supplier shall allow a site visit of their facilities to demonstrate their ability to meet the quality and capacity requirements outlined in this specification.

1.04.2B - OTHER ELEMENTS

The City may also take into consideration other criteria for determining award. Other elements or factors, whether or not specifically provided for in this Specification, which would affect the final cost to and the benefits to be derived by the City, may be considered in determining the award of the contract. The final award decision will be based on the best interests of the City. Refer to City of Tacoma Standard Terms and Conditions Section 1.20.

1.05 - CONTRACT

1.05.1 - CONTRACT PERIOD

The contract is intended for a minimum of three (3) years from the award date of the contract. The Award Date of Contract is the date that the City of Tacoma Purchasing Division issues the contract. This occurs after the Tacoma Public Utilities Board approves the award of the contract and all contract documents (if required) have been returned to the Purchasing Division.

1.05.2 - CONTRACT EXTENSIONS

Two contract extensions of up to one year per occurrence may be considered upon mutual agreement of both parties to extend the contract under the same terms and conditions of the original contract.

1.06 - SAFETY AND STANDARDS

The Items supplied shall meet appropriate ANSI, OSHA, WISHA, and all federal, state, and local standards for its intended use. Refer to Technical Provisions Section 2.01.1 for specific industry standards that apply to the Specifications of this bid.

1.07 - MATERIALS, DESIGN, WORKMANSHIP, AND TRADE NAMES

Unless otherwise noted in this Specification, all materials and equipment incorporated into any item covered by the Specifications shall be new and of the most suited of their respective kinds for their intended use. All workmanship shall be in accordance with accepted industry practices.

1.08 - PRICING AND PURCHASE ORDERS

1.08.1 - QUANTITIES AND PURCHASE ORDERS

The quantities listed on the Proposal Pricing Sheets are an estimate only and are based on historical data gathered from the previous six (6) years. Delivery will be according to purchase order on an as-needed basis throughout the period of the contract. The City reserves the right to increase or decrease quantities under this contract and pay according to the unit prices quoted in the proposal. Refer to City of Tacoma Standard Terms and Conditions Section 1.35.J. The purchase order will be delivered to the Supplier by email.

1.08.1A - WORKING DAYS

Working days are weekly Monday through Friday. City observed holidays as listed in City of Tacoma Standard Terms and Conditions Section 1.24 are not included.

1.08.2 - FREIGHT CHARGES LESS THAN FULL LOAD

Orders will be placed to achieve full load deliveries when possible. A full release quantity for this material is assumed to be 45,000 lbs. or above. On occasion an order may be placed for less than a full load. At the vendors discretion freight charges will be allowed on these deliveries to achieve the full load freight charge as quoted on the proposal pricing sheets. The allowed freight charge will be based on the percentage of weight remaining to achieve the full load weight of 45,000 lbs.

The freight charge offered on the proposal pricing sheets will be considered in the bid evaluation based upon an estimated usage of six events per year.

EXAMPLE CALCULATION:

Step	Action	Value
1	Full Load Freight Charge as offered on the Proposal page:	\$500.00
2	Determine the weight of the load	25,000 lbs.
3	Determine the load weight as a percentage of the full load (25,000 lbs./45,000 lbs.)	56%
4	Calculate the allowed freight charge: (\$500 x 56% = \$280) (\$500 – \$280 = \$120)	\$220.00

1.08.3 - SEMI-ANNUAL PRICING ADJUSTMENT

On a semi-annual basis, according to the schedule listed below, the unit prices of the items bid will be adjusted reflecting the percentage change of **Series ID PCU32739032739014** – “Precast Concrete Products” of the Producer Price Index as published by the Bureau of Labor Statistics of the U.S. Department of Labor. Refer to “Appendix H” for historical index data.

The use of a third-party index such as the BLS PPI greatly simplifies the contract evaluation and award by putting all Respondents on the same process for escalation. Therefore, the evaluation process as listed in Section 1.04 does not need to take into account future escalations when determining the lowest and best responsible Respondent. The index also allows for a near automatic process of unit price adjustments without the concern for additional oversight by auditors for either side of the agreement.

1.08.3A – FIRST ADJUSTMENT AFTER AWARD

Prices listed on the Proposal Pricing Sheet are requested at an elevated Producer Price Index value. Upon award of a contract the unit prices will be adjusted to reflect the most current value of **Series ID PCU32739032739014** – “Precast Concrete Products”.

1.08.3B - SCHEDULE OF UNIT PRICE ADJUSTMENTS

Unit prices will be adjusted on or about the dates listed below contingent upon the publication of the Producers Price Index.

Date of Adjustment	Month of PRODUCER PRICE INDEX to be referenced for adjustment
January 15, 2024	December 2023
July 15, 2024	June 2024
January 15, 2025	December 2024
July 15, 2025	June 2025
January 15, 2026	December 2026
July 15, 2026	June 2027

1.08.3C- APPLICATION

Purchase orders will reflect the semi-annual pricing in effect within the period of the purchase order creation, not at the time of shipment.

1.09 - DELIVERY

Following the receipt of a purchase order, contract materials are to be delivered within the maximum time frame specified by the Supplier on the proposal pricing sheets. The delivery time will be enforced for all releases of this contract and any contract renewals. Liquidated Damages may apply when the maximum time stated for delivery is not met.

1.09.1 - FORCE MAJEURE

Delays caused by problems beyond the control of the Supplier, if fully documented and submitted to the City, may be excused. This allowance shall in no way be construed to apply to or excuse delays caused by negligence on the part of the Supplier. Unavoidable delays in the prosecution of the work shall include only delays from causes beyond the control of the Supplier and which he/she could not have avoided by the exercise of due care, prudence, foresight and diligence.

The Supplier shall not, be responsible for delays in delivery due to acts beyond his/her or manufacturer's reasonable control, or due to act of god, fire, strikes, epidemics, war, riot, unavoidable delay in transportation or rail car/transport shortages, or documented

unavoidable material shortages, provided the City is notified in writing by the Supplier of such pending or actual delay and the reasons therefore. If deemed excusable, the City shall authorize an extension of time. In the event of such an excusable delay, the date of delivery shall be extended for a period equal to the time lost due to the reason for delay. Any damage assessment or extensions of time are to be authorized by written purchase order changes issued by the City of Tacoma.

1.09.1A - TERMINATION OF PURCHASE ORDER RELEASE(S)

If the delay will extend beyond 10 working days, the City may exercise the right to terminate any and all purchase order releases that are affected by the delay and obtain the items required from other sources.

1.09.1B - DUE DILIGENCE

It shall be the responsibility of the Supplier to provide the City with adequate documentation to demonstrate that the Supplier exercised due diligence in endeavoring to avoid the delay.

1.10 – SHIPPING REQUIREMENTS

The Supplier shall be responsible for industry standard packing that conforms to the requirements of the carrier's tariffs and the ICC regulations.

Underground Concrete Vaults shall be shipped in such a fashion that they will arrive at the City without transit-associated damage. Supplier must individually palletize all products. A complete packing list must be included.

1.10.1 - LABELING

The material/equipment must be clearly marked as to Tacoma Power MID#, destination, address, and purchase order number.

1.10.2 - SUBCONTRACTOR (SHIPPING COMPANY)

The City reserves the right to request and require a change in shipping company utilized by the Supplier based upon history of damaged goods delivered to the City and/or evidence of unsafe work practices by the shipping company.

1.10.3 – SHIPPING NOTICE

The shipper shall notify the Tacoma Power Warehouse a minimum of **24** hours prior to arriving at delivery destination. This notice may be sent **via phone or email** and is required to convey final delivery information and insure sufficient staff available to unload cargo.

Tacoma Power Warehouse	
Contact	Keith Wawrin
Phone Number	(253) 502-8760
Email Address	kwawrin@cityoftacoma.org

1.10.4 – SUPPLIER MINIMUM INVENTORY

A minimum quantity of the following concrete vaults and accessory items are required to be maintained at the supplier's yard and available for shipment within 24 hours of notice.

These items will remain at the vendors stocking facility until the last two months of the contract. Following the expiration of the contract Tacoma Power will purchase any remaining inventory.

Bid Item Number	Tacoma Power MID #	Description	Minimum Required Stock Quantity
6	21163	444 Vault Base	6
7	19451	444 Vault Cover #1 1 phase Transformer Cover	6
9	19447	444 Vault Cover #2 Aluminum Diamond Plate	1
10	19449	444 Vault Cover #2 Aluminum Non-Skid	1
14	21165	554 Vault Base	4
116	19459	554 Vault Cover #2 3 phase Transformer	1
17	19453	554 Vault Cover #3 Aluminum Diamond Plate	2
18	19455	554 Vault Cover #3 Aluminum Non-Skid	1

1.10.5 – DELIVERY TIMES

The deliveries of precast concrete vaults and accessories shall be delivered between 9:00 a.m. and 3:30 p.m. Monday through Friday excluding City observed holidays (City of Tacoma Standard Terms and Conditions Section 1.24); unless other prior arrangements have been made.

1.10.6 – DELIVERY LOCATION

Deliver completed items F.O.B. Destination as directed by the purchase order release to either:

Tacoma Power
Power Warehouse
3628 S. 35th St.
Tacoma, Washington 98409

or
Tacoma Power
South Service Center
3002 224th St. E
Spanaway, WA 98387

1.10.6A – ALTERNATE DELIVERY LOCATIONS

The City retains the option to have the merchandise delivered to an alternate facility or job-site residing within the Tacoma Power service territory (see Appendix “B”). The supplier shall have the ability to place vaults within a 20’

distance of the delivery vehicle, or at Tacoma Power's discretion, into a pre-existing hole at the job site. All vault sizes 684 and above will typically be delivered to a job site. All delivery costs shall be included in the bidder's proposal.

The following communities are included within the Tacoma Power service area:

- Tacoma
- Fircrest
- Roy
- University Place
- Fife
- Loveland
- Lakewood
- Spanaway
- Graham

1.11 - INSPECTION & WARRANTY

All goods are subject to final inspection and acceptance by the Engineer and/or Tacoma Power Warehouse employees.

1.11.1 - FAILURE OF INSPECTION

Materials received damaged or failing to meet the requirements of this contract will be held at the Supplier's risk and may be returned to Supplier. If so returned, the cost of transportation, unpacking, inspection, repackaging, reshipping, or other like expenses are the responsibility of the Supplier.

Charges for dismantling and reinstallation of materials furnished pursuant to the Contract will be the responsibility of the Supplier only when a change out or replacement is required because of a suspected or known design defect or large scale failure of manufacturer's quality control system.

1.11.2 - FACTORY INSPECTION

The City reserves the right to inspect the manufacturer's plant facilities at any time during the course of the contract. If the Engineer deems it necessary, they shall be permitted to witness the preparation, inspection, and loading of the Tacoma Power underground concrete vaults.

1.11.2A - QUALITY ASSURANCE AUDITS

The City or its representative may audit the quality assurance program at any time prior to and during the Contract period or its extensions.

1.11.2B - QUALITY ASSURANCE DOCUMENTATION

The manufacturer shall provide, when requested, access to and copies of quality assurance documents such as material certificates, inspection and test results obtained in the course of quality assurance, control charts, and other quality documents compiled during the work.

1.11.2C - FACTORY ASSISTANCE DURING INSPECTION

The manufacturer shall have engineering, manufacturing, quality control, and operational factory personnel available who speak technical and conversational English without the need of an interpreter.

1.11.3 - WARRANTY

The City has determined that the physical repair of concrete vaults, under warranty, is generally best completed at the manufacturer's facility. If the deviation can be corrected through minor on-site repair then the supplier will bear all costs associated with making the correction.

Unless a longer period is specified, the Supplier and/or manufacturer of the supplies, materials and/or equipment furnished pursuant to this Contract agrees to correct any defect or failure of the supplies, materials and/or equipment which occurs within **one year** from the date of commencement of use, however, said warranty period shall not extend beyond **eighteen months** after date of receipt by the City.

When the Supplier is not the manufacturer of the item of equipment, Supplier agrees to be responsible for this warranty and Supplier is not relieved by a manufacturer's warranty.

1.11.3A – RETURN OF CONCRETE VAULTS

Tacoma Power reserves the right to return to the manufacturer at its expense concrete materials requiring warranty/repair work. The manufacturer will be provided the option to replace defective units with new materials. All replaced units will be held for pick up (no more than) 30 days after the arrival of the replacement unit. Tacoma Power at its discretion will dispose of any materials not picked up within 30 days.

1.11.3B – RETURN TIME FRAME

All warranty repair work on returned concrete vaults shall be accomplished within the specified lead-time for delivery in the bid proposal. Warranty repair time will be calculated from the time the unit arrives at the suppliers manufacturing or repair facility.

1.11.3C - WARRANTY PERIOD EXTENSION

The Contract warranty period shall be suspended from the time a significant defect is first documented by the City until the material is repaired or replaced by Supplier and accepted by the City. In addition, in the event less than ninety (90) days remain on the warranty period (after recalculating), the warranty period shall be extended to allow for at least ninety (90) days from the date the work or equipment is repaired or replaced and accepted by the City.

1.12 - INVOICES & PAYMENT

1.12.1 - INVOICES

All items called for in these Specifications must be supplied to the City before the final invoice can be processed. Invoices shall be submitted per City of Tacoma Standard Terms and Conditions Section 1.39.

1.12.2 - PAYMENT

Upon certification by the Engineer and/or appropriate warehouse personnel that the items have been received in accordance with the Specifications and are in satisfactory condition, a 100 percent payment will be made in accordance with Section 1.40 of the City of Tacoma Standard Terms & Conditions. Payment methods include:

- A. Electronic Funds Transfer (EFT) by Automated Clearing House (ACH).
- B. Check or other cash equivalent.

1.12.2A - UNSATISFACTORY PERFORMANCE

In the case of unsatisfactory performance, the payment shall be made after the Supplier has made the necessary repairs and/or modifications and satisfactory performance is obtained, or the unit is replaced.

1.13 - EQUITY IN CONTRACTING

The City of Tacoma is committed to encouraging firms certified through the [Washington State Office of Minority and Women's Business Enterprise](#) to participate in City contracting opportunities. See the TMC 1.07 Equity in Contracting Policy at the City's [Equity in Contracting Program website](#).

1.14 - STANDARD TERMS AND CONDITIONS

City of Tacoma [Standard Terms and Conditions](#) apply.

These Technical Specifications have been prepared
by a licensed Professional Engineer registered in the State of Washington

SECTION II - TECHNICAL PROVISIONS

2.01 – STRUCTURAL

Underground precast concrete vaults, covers and risers of this specification shall meet the following current standards and requirements at a minimum.

2.01.1 – INDUSTRY STANDARDS

- ASTM C1802 – “Standard Specification for Design, Testing, Manufacture, Selection, and Installation of Fabricated Metal Access Hatches for Utility, Water and Wastewater Structures”
- ASTM C857 – “Standard Practice for Minimum Structural Design Loading for Underground Precast Concrete Utility Structures”.
- ASTM C858 – “Standard Specification for Underground Precast Concrete Utility Structures”
- ACI 318 – “Building Code Requirements for Structural Concrete and Commentary”
- ASTM C150 – “Standard Specification for Portland Cement”
- ASTM C33 – “Standard Specification for Concrete Aggregates”
- ASTM C1602 – “Standard Specification for Mixing Water Used in the Production of Hydraulic Cement Concrete”
- ASTM A615 – “Standard Specification for Deformed and Plain Carbon-Steel Bars for Concrete Reinforcement”
- ASTM A706 – “Standard Specification for Deformed and Plain Low-Alloy Steel Bars for Concrete Reinforcement”
- ASTM A1064/A1064M – “Standard Specification for Carbon-Steel Wire and Welded Wire Reinforcement, Plain and Deformed, for Concrete”
- AWS D1.4/D1.4M – “Structural Welding Code - Reinforcing Steel”
- AASHTO M306 – “Drainage, Sewer, Utility, and Related Castings”

2.01.2 – CONCRETE

- Concrete Compressive Strength – Minimum 4,000 psi strength at 28 days.
- $w/c < .45$ (water/cementitious ratio)
- Quality materials using well-graded aggregates
- Concrete thickness sufficient to meet minimum reinforcement cover and withstand design loading conditions
- Finish shall be broomed with machined edges
- Rock pockets over 3/8in. deep and other imperfections on all surfaces shall be patched and troweled to match surrounding surface
- Interior wall and exterior surfaces shall be smooth and even with no chips or cracks

2.01.3 – REINFORCEMENT/STRUCTURAL STEEL

- Reinforcement design by structural calculations as required by code or as proven by testing with a minimum grade 60 welded wire fabric and #3 - #8 steel reinforcing bars, grade 60.

- Welding to or of the rebar shall be acceptable only in accordance with current rebar welding recommendations as per AWS D1.4/D1.4M.

2.01.4 – DESIGN LOADING

- All vaults, covers and risers shall be constructed for AASHTO H20 traffic loading or better, except for the following:
 - 554 vault and cover rated for H30 traffic loading.
 - E3 vault and cover rated for pedestrian loading.

2.02 – INTERNALLY GROUNDED VAULTS

With the exception of the E3 & 233, all concrete vaults, bases and covers shall be self-grounding, concrete-encased electrodes, meeting all the provisions of NESC Rule 094B6.

2.02.1 – ELECTRODES

A grounding electrode shall be contained within the structural steel in the base of the vault and shall meet but not be limited to the following specifications:

- Minimum #3 AWG copper or 3/8in. diameter steel.
- Minimum length of 22ft.
- Be as straight as possible.
- Encased with a minimum of 1-1/2in. of radial concrete.
- Minimum of 2-1/2ft. below the top of the vault or junction box.

2.02.1A – GROUNDING/BONDING INSERT CONNECTORS

The grounding/bonding insert connectors shall meet but not be limited to the following specifications:

- Located as shown in A-UG-1150. The connector shall be a minimum 3in., maximum 6in. from edge of equipment channel.
- Tapped for 1/2in.-13 UNC.
- Installed flush (neither recessed nor protruding) with the vault wall/cover.
- Plugged to prevent contamination from entering.
- Labeled per Section 2.02.1D prior to delivery.
- Vertically aligned on multi-section vaults.
- A 3/8in. diameter steel connector rod, or similar sized metallic conductor, shall be used to bond each insert to the vault internal grounding electrode/structural steel. This connector rod shall be bonded to the rebar with a minimum of two welded connections with each weld being 2in. long minimum.

2.02.1B – GROUNDING INSERT CONNECTORS – VAULT BASE

- With the exception of multi-sectioned vaults, inserts are to be located in the vault base centered on two opposite walls and shall have two inserts per wall, one facing the inside of the vault the other facing the outside of the vault.
- For the 810, 814, 818, and 10X20 vaults, the ground inserts shall be located on opposite sides of the vault base floor as shown in A-UG-1150.

2.02.1C – BONDING INSERT CONNECTOR – VAULT COVERS, MIDDLE SECTIONS AND RISERS

- Vault covers, middle sections and risers shall have bonding inserts installed and located as shown in A-UG-1150.
- On multi-sectioned vaults, only the middle section will have the inserts that face the inside of the vault and the outside of the vault.

2.02.1D – LABELING OF INSERTS

Inserts shall be labeled / identified as follows:

Section	Label	Color
Base (Section that includes the grounding electrode bonded to insert)	GRD	Red
Cover	BOND	Green
Middle Section	BOND	Green
Riser	BOND	Green

The labeling shall be adjacent to the insert with a minimum 1in. tall letters. When inserts on covers are oriented downward the label shall be painted on the access opening side closest to the insert location.

2.03 – VAULT COVERS

2.03.1 – HINGED DOORS

- All hinged door and associated locking mechanism designs must be reviewed and approved by Tacoma Power before construction begins.
- The doors shall have two locking devices (except for the 233 vault):
 - One device shall be a secured (non-removable) stainless steel pentahead secured by compression camlock. Tacoma Power will no longer accept pentahead locking into threaded insert (except for the 233 vault).
 - Other device will stainless steel slamlock operated from outside by quarter turn captive and tamper resistant pentahead bolt flush to the cover. This device shall also be equipped with an inside release handle. The slamlock shall automatically latch upon closing the door.
- The hinged access door(s) on the vaults shall be located and of a size as shown on A-UG-1150 and shall be designed and constructed to AASHTO H20 traffic loading or better (with the exception of E3 doors (pedestrian loading) and 554 H30 doors). This rating shall be for incidental or non-deliberate traffic areas.
- The doors shall be manufactured from an aluminum non-slip surface and galvanized steel frame.
- The opening and closing of the door shall require a 50lb. maximum effort for either opening or closing operations.
- All doors shall be designed with flush hinges which allow a full 180° open.
- A 90° hold open feature is required.
- The cover shall include two recessed lifting handles that rest flush with the top of the door.
- The door and frame shall have a close-fitting mating surface and shall be flush with the top of concrete cover.

2.03.1A – ELECTRICAL BONDING

The frame of the hinged doors shall be bonded to the reinforcing steel of the cover in two locations through welded connections.

2.03.2 – COVER WITH BLOCKOUTS

- See A-UG-1150 for all blockout dimensions on all vault covers with blockouts.
- Blockouts shall be beveled on the exterior surface.
- Equipment mounting channels shall be centered on each end of all transformer blockouts.
- The channels will be hot-dipped galvanized steel, 5in. length.

2.03.3 – MANHOLE FRAMES AND COVERS

See A-UG-1150 for all specifications for Tacoma Power manhole frames and covers

2.03.4 – LOGO “TACOMA POWER” (EXCEPT FOR 687, 814, 818, AND 10X20 VAULTS)

- Covers shall have the logo “TACOMA POWER” cast into the concrete cover or manhole cover using 2in. tall minimum letters.
- The logo is to be legible after 20 years exposure and placement such as to be easily noticed by a lay person casually inspecting the structure.

2.03.5 – NON-SKID COVERS

Hinged doors per section 2.03.1 that are specified to be a non-skid surface shall be one of the following products or other as approved by Tacoma Power.

- Thermion TH604 Grade 3
- Mebac® Grade 4
- SlipNot® Grade 2

All non-skid door surfaces shall meet ADA, OSHA and all generally accepted guidance of slip-resistant values as applicable.

2.03.6 – SUMP PUMP DRAIN – 687, 810, 814, 818, AND 10X20 VAULTS

These vault covers shall have a 2in. diameter knockout in each exterior corner (two knockouts on each side) for sump pump drainage located as shown in A-UG-1150.

2.03.7 – COVER FOR 10X20 PANEL VAULT OPENING

To secure the 8ft. x 4ft. blockout, a solid 9ft. x 5ft. cover including a 1in. key is required and shall be designed to meet AASHTO H20 traffic loads.

2.04 – VAULT BASE DETAILS

2.04.1 – EQUIPMENT MOUNTING CHANNEL

- Equipment mounting channel (“C” channel) shall be provided and located per A-UG-1150.
- The channel size shall be 1-5/8in. x 13/16in. with length as indicated on the drawings.
- All channel material shall be hot-dipped galvanized.
- Unless otherwise noted the channel shall be included on each of the four interior walls.

2.04.2 – SUMP

- A sump shall be provided in the bottom of each vault with a floor.
- The size and placement of the sump shall be per A-UG-1150.
- The bottom of the sump shall be designed such that it can be knocked out if desired.

2.04.2A – 233 VAULTS

The sump depression shall be in the center of the floor and 6in. diameter.

2.04.2B – 444, 554, 774 AND 5106 VAULTS

- The sump depression shall be a in the center of the floor and 12in. diameter.
- The floor shall be sloped to drain to the sump.

2.04.2C – 684, 687, AND 810 VAULTS

- These vaults shall include a rectangular sump at one end wall.
- Sump shall be equipped with galvanized grating.
- The floor shall be sloped to drain to the sump.

2.04.2D – 814, 818 AND 10X20 VAULTS

- These vaults shall include a rectangular sump at each end wall.
- Each sump shall be equipped with galvanized grating.

2.04.3 – KNOCKOUTS

- Vaults will have knockouts provided with size and location as shown in A-UG-1150.
- Knockouts shall be formed so that they knock out to the dimensions shown but do not break out during loading or installation.
- Knockouts shall be formed so that surrounding vault walls do not break out or fracture.

2.04.3A – GROUND ROD KNOCKOUTS

- Each concrete base or vault floor shall have knockouts for driving ground rods.
- Ground rod knockouts shall be 1-1/2in. diameter located in two opposing corners of the vault floor.
- One of these knockouts shall be punched so as to allow rain water to not collect in vault during storage.
- Edges of knockouts shall be rounded.

2.04.3B – LIFTING HOLE KNOCKOUTS – E3, 233, 444 AND 554 VAULTS

These vaults shall have a single, 1-1/2in. diameter lifting hole knockout centered on each of the four walls of the vault base.

2.04.4 – SEALING OF SECTIONAL VAULTS – 687, 810, 814, 818, AND 10X20 VAULTS

- All sectional vaults shall be provided with Mastic strips to be used between vault keyways and sections for providing a water resistant seal.

- Provide instruction on laminated 8.5in. X 11in. with the Mastic strips stating for customer/contractor to NOT seal the cover to the top section of the vault.

2.04.5 – INTERIOR CORNERS – 444, 554 AND 774 VAULTS

The upper 4in. minimum of the interior corners of these vaults shall remain square so as to not interfere with installation of a cover.

2.05 – REQUIRED INFORMATION ON EXTERIOR OF EACH UNIT

All vault bases, covers, middle sections and riser sections shall have the following stamped, stenciled or labeled on the exterior side or edge of the unit:

- Manufacturer name
- Type of vault or Structure I.D.
- Gross Lifting Weight
- Date of manufacture listed MM/DD/YY
- Verification of inspection with date and name of inspector

2.06 – LIFTING PROVISIONS & RIGGING EYES

- Risers – 233, 444, 554, 774 Vaults; all risers shall have lifting provisions. Solid wire lifting loops are not acceptable.
- Lifting anchors and rigging eyes shall be MeadowBurke RL-23 Spread Anchors (“anchors” hereafter); see Appendix “D” for MeadowBurke Anchor Detail.
- These anchors shall be installed per all the manufacturer’s requirements and instructions and located as shown in A-UG-1150.
- All anchors shall be hot-dipped galvanized or stainless steel.
- Anchors shall not protrude from the surrounding concrete surface and shall be cast in a direction that allows for easy access by the connecting ring clutch.

2.06.1 – LIFTING ANCHORS, RIGGING EYES AND STRAP LIFTING NOTCH - COVERS

2.06.1A – LIFTING ANCHORS – 233, 444, 554, 684, 687, 774, 810, 5106, AND E3 VAULTS AND COVER FOR 10X20 PANEL VAULT OPENING

These covers shall have an anchor placed in each exterior corner of the top surface sized according to manufacturer’s standards.

2.06.1B – LIFTING ANCHORS AND RIGGING EYES – 814, 818, AND 10X20 VAULTS

- These covers shall have an anchor placed in each exterior corner and an anchor placed in the center along each side of the top surface (for a total of six anchors) as shown in A-UG-1150 and sized according to manufacturer’s standards.
- These vaults shall also have two 8-ton anchors placed on the underside of the cover, 2in. from the manhole access edge, diagonally from each other, for each manhole access.

2.06.1C – STRAP LIFTING NOTCH – 444 AND 554 VAULTS

- These covers shall have a “Strap Lifting Notch” cast in the underside of the cover in each corner.
- The triangular notch shall have 3in. sides and be 1/4in. deep.

2.06.2 – LIFTING ANCHORS AND RIGGING EYES – LOWER SECTION

2.06.2A – RIGGING EYES – 444, 554, AND 774 VAULTS

These units shall include one 2-ton anchor placed in the lower one-third section of each interior corner of the lower section (vault base).

2.06.2B – RIGGING EYES – 810 VAULTS

These units shall include one 4-ton anchor placed in each interior corner of the lower section (vault base).

2.06.2C – RIGGING EYES – 684, 687, AND 5106 VAULTS

These units shall include two 4-ton anchors placed in each interior corner of the lower section (vault base), one anchor in the upper one-third section and one anchor in the lower one-third section.

2.06.2D – LIFTING ANCHORS AND RIGGING EYES – 814, 818, AND 10X20 VAULTS

- These units shall include 8-ton anchors in the each corner of the vault base floor.
- In addition, 814 and 818 vault bases shall include three 8-ton lifting anchors at each end of the vault base, for a total of six lifting anchors located as shown in A-UG-1150.
- In addition, 10X20 vault bases shall include a total of ten 8-ton lifting anchors located as shown in A-UG-1150.

2.06.3 – RIGGING EYES – MIDDLE SECTION

2.06.3A – RIGGING EYES – 810 VAULTS

These units shall include two 4-ton anchors placed in each interior corner of the middle section, one anchor in the upper one-third section and one anchor in the lower one-third section.

2.06.3B – RIGGING EYES – 814 AND 818 VAULTS

- These units shall include two 8-ton anchors placed in each interior corner of the middle section, one anchor in the upper one-third section and one anchor in the lower one-third section.
- In addition, these vaults shall have two 8-ton anchors in each side of the middle section as shown in A-UG-1150.

2.06.4 – RIGGING EYES – RISER SECTION – 814 AND 818 VAULTS

These units shall include one 8-ton anchor placed in each interior corner of the riser section as shown in A-UG-1150.

2.06.5 – RIGGING EYES – 10X20 VAULT PANELS

The panels of the 10X20 vaults shall include six 8-ton anchors on each side panel and five 8-ton anchors on each end panel as shown in A-UG-1150.

2.07 – MISCELLANEOUS PRECAST PRODUCTS

2.07.1 – ANCHOR – 20IN DIAMETER X 4IN THICK (SEE APPENDIX D)

- mold will be supplied by Tacoma Power

- has minimum of two #4 reinforcing bars each way
- 3/4in. schedule 40 PVC conduit located on-center
- 6M Alumoweld guy wire lifting loops located approximately 3in. from outside edge – 2 places
- must be stacked max 25 each per pallet

2.07.2 – EQUIPOTENTIAL PAD – 4FT X 6FT X 6IN (SEE APPENDIX E)

- This is a solid concrete slab to include:
 - Concrete Compressive Strength – Minimum 4,500 psi strength at 28 days
 - minimum 20ft. of #3 rebar welded as a loop with minimum of 1.5in. of concrete cover from sides and bottom
 - #4 steel wire reinforcing mesh 8in. x 8in. throughout pad welded minimum every 16in. to rebar loop
 - four (4) bronze inserts, tapped for 1/2in.-13 UNC bolt with 3/8in. steel rod 20in. long welded to insert, located as centered in each edge of slab and welded in three (3) locations each to the #3 rebar loop
 - 2 ton meadowburke anchors shall be placed in each corner at 45° angles flush with top
 - embossed with "TACOMA POWER - EQ PAD" in 2in. minimum letters

2.07.3 – GUARD POST/BOLLARD – 6FT X 9IN (SEE APPENDIX F)

APPENDIX “A”

REQUIRED FORMS

Signature Page
Pricing Proposal Sheets
Substitution Request Form (if needed – see Section 1.02.3B for
instructions)
PROPOSAL SHEETS
VENDOR QUALIFICATION
VENDOR INQUIRY
REFERENCES DATA SHEET

SIGNATURE PAGE

CITY OF TACOMA TACOMA POWER/TRANSMISSION & DISTRIBUTION

All submittals must be in ink or typewritten, executed by a duly authorized officer or representative of the bidding/proposing entity, and received and time stamped as directed in the **Request for Bids page near the beginning of the specification**. If the bidder/proposer is a subsidiary or doing business on behalf of another entity, so state, and provide the firm name under which business is hereby transacted.

REQUEST FOR BIDS SPECIFICATION NO. PT23-0017F UNDERGROUND PRECAST CONCRETE VAULTS

The undersigned bidder/proposer hereby agrees to execute the proposed contract and furnish all materials, labor, tools, equipment and all other facilities and services in accordance with these specifications.

The bidder/proposer agrees, by submitting a bid/proposal under these specifications, that in the event any litigation should arise concerning the submission of bids/proposals or the award of contract under this specification, Request for Bids, Request for Proposals or Request for Qualifications, the venue of such action or litigation shall be in the Superior Court of the State of Washington, in and for the County of Pierce.

Non-Collusion Declaration

The undersigned bidder/proposer hereby certifies under penalty of perjury that this bid/proposal is genuine and not a sham or collusive bid/proposal, or made in the interests or on behalf of any person or entity not herein named; and that said bidder/proposer has not directly or indirectly induced or solicited any contractor or supplier on the above work to put in a sham bid/proposal or any person or entity to refrain from submitting a bid/proposal; and that said bidder/proposer has not, in any manner, sought by collusion to secure to itself an advantage over any other contractor(s) or person(s).

Bidder/Proposer's Registered Name

Signature of Person Authorized to Enter Date
into Contracts for Bidder/Proposer

Address

Printed Name and Title

City, State, Zip

(Area Code) Telephone Number / Fax Number

Authorized Signatory E-Mail Address

State Business License Number
in WA, also known as UBI (Unified Business Identifier) Number

E.I.No. / Federal Social Security Number Used on Quarterly
Federal Tax Return, U.S. Treasury Dept. Form 941

State Contractor's License Number
(See Ch. 18.27, R.C.W.)

E-Mail Address for Communications

Addendum acknowledgement #1_____ #2_____ #3_____ #4_____ #5_____

THIS PAGE MUST BE SIGNED AND RETURNED WITH SUBMITTAL.

PROPOSAL PRICING TOTALS

Item	Description	Delivered
Items 1 - 5	233 Vault and Accessories	\$
Items 6 - 13	444 Vault and Accessories	\$
Items 14 - 25	554 Vault and Accessories	\$
Items 26 – 33†	684 & 687 Vault and Accessories	\$
Items 34 – 41†	774 Vault and Accessories	\$
Items 41 – 48†	810,814 & 818 Vault and Accessories	\$
Items 49 - 53†	5106 & 10X20 Vault and Accessories	\$
Items 54 - 61	Maintenance and Accessories	\$
Sub Total for Proposal**		\$
Sales Tax @ 10.3%, Location Tax Collected: Tacoma, WA (Note Paragraph 1.41 of Standard Terms and Conditions)		\$
Total for All Items with Tax		\$

**Bid prices to be offered at the escalated PPI Value specified on the Proposal Pricing Sheet.

†Typically delivered directly to job site (see section 1.10.6A).



PROPOSAL PRICING SHEET CONTINUED

FREIGHT CHARGES LESS THAN FULL LOAD

Pro-rated freight charges will be allowed on orders considered less than a full load weight. A truckload qty for this material is assumed to be 45,000 lbs. For the purpose of calculating the allowed freight charges the following quote is being requested. This proposal pricing will be considered in the bid evaluation (See Paragraph 1.08.2 of the Special Provisions).

Full load weight	Freight Charge (included in delivery of a full load)
45,000 lbs (minimum full load)	\$

NOTES:

1. Quantities listed on the proposal sheet are an estimate only. Actual quantities will be specified by Purchase Order as noted in Section 1.08 – Pricing and Purchase Orders.
2. Price adjustments will be made per Section 1.08.3 – Semi-Annual Pricing Adjustment
3. All prices should be submitted as F.O.B. Destination, freight prepaid and allowed (included in unit price).
4. Vendor will be required to maintain minimum inventory quantities per Section 1.10.4.



Tacoma Public Utilities

SUBSTITUTION REQUEST FORM

Specification No. PT23-0017F

Underground Precast

Concrete Vaults

Prospective bidders may request the use of substitute materials below.

All requests must be submitted electronically, via e-mail to sbird@cityoftacoma.org no later than ten (10) business days prior to the submittal deadline.

Manufacturer/Model: _____

Manufacturer Contact Information

Name/Title: _____

Phone Number: _____

E-Mail: _____

Describe the differences between the proposed substitution and specified material: _____

Please attach documentation from manufacturer that certifies the material meets all the criteria outlined in Technical Specifications of this bid specification.

Contractor Name: _____

Preparer Name/Title: _____

Mailing Address: _____

Phone Number: _____

E-Mail: _____

Signature: _____



Tacoma Public Utilities

INTERNAL USE ONLY

- ☐ Approved as Substitute*
- ☐ Rejected – Material Not Acceptable
- ☐ Rejected – Inadequate Information
- ☐ Rejected – Request Received After Deadline

**Subject to review and approval of submittal documents*

Remarks

Reviewer Name/Title: _____

Signature: _____ Date: _____

PROPOSAL - VENDOR QUALIFICATION

1. State the number of years the manufacturer has been producing products of a similar scope to those outlined in this Specification. See Section 1.01.3 for minimum qualifications allowed.

	Years
--	--------------

2. Is your firm able to maintain the minimum inventory quantities as described in Section 1.10.4?

YES	
NO	

3. Can your firm provide manufacturer's representation as described in Section 1.01.3C of this specification?

YES	
NO	

PROPOSAL - VENDOR INQUIRY

1. **Does your firm accept payment by EFT/ACH? ____Y ____N**
(Electronic Funds Transfer (EFT) by Automated Clearing House (ACH))

2. **Does your firm accept payment by credit card (Visa)? ____Y ____N**
NOTE: The City of Tacoma will not accept price changes or pay additional fees when a credit card is used.

3. **Prompt Payment discount offered ____%, ____ days.**
Only discounts offered of 20 days or more will be considered for bid evaluation purposes.

PROPOSAL - REFERENCES DATA SHEET

(AS DESCRIBED IN SECTION 1.01.3A)

Seven (7) Utility references are the absolute minimum allowed.

UTILITY NAME AND ADDRESS	YEAR PRODUCT SOLD	CONTACT NAME	TELEPHONE NUMBER

SUB-VENDOR DATA SHEET

(AS DESCRIBED IN SECTION 1.01.4)

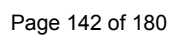
SUB-VENDOR NAME AND ADDRESS	CONTACT NAME	TELEPHONE NUMBER	DESCRIPTION OF WORK PROVIDED

APPENDIX “B”

MAP OF SERVICE AREA



TACOMA POWER
SERVICE AREA



APPENDIX “C”

TACOMA POWER **PRECAST CONCRETE** **VAULTS STANDARD A-UG-1150**

Application

Precast concrete vault descriptions, applications and accessories used in Tacoma Power's underground system.

Vault Applications

	Vault Type											
Application	233	444	554	684	687	774	810	5106	814	818	10X20	E3
Commercial Secondary Service	■	■	■			■						■
1Ø Junction Box		■										
3Ø Junction Box			■									
1Ø PM Tfmr 25 to 75 kVA		■										
1Ø PM Tfmr 100 to 167 kVA			■									
3Ø PM Tfmr, 45 to 300 kVA			■									
3Ø PM Tfmr 500 to 2500 kVA						■						
1-position in & out vacuum switch cabinet			■									
3Ø Primary Metering Cabinet						■						
Secondary Service Cabinet						■						
Feeder Splice Vault, Single Circuit				■								
Feeder Splice Vault, Multiple Circuits					■		■					
Switchgear Vault, Padmount							■					
Urban Junction Box								■				
Feeder Junction Box									■	■		
Switchgear Vault, Submersible											■	
Feeder Pull Vault, Multiple Circuits										■	■	
Maintenance Only												■

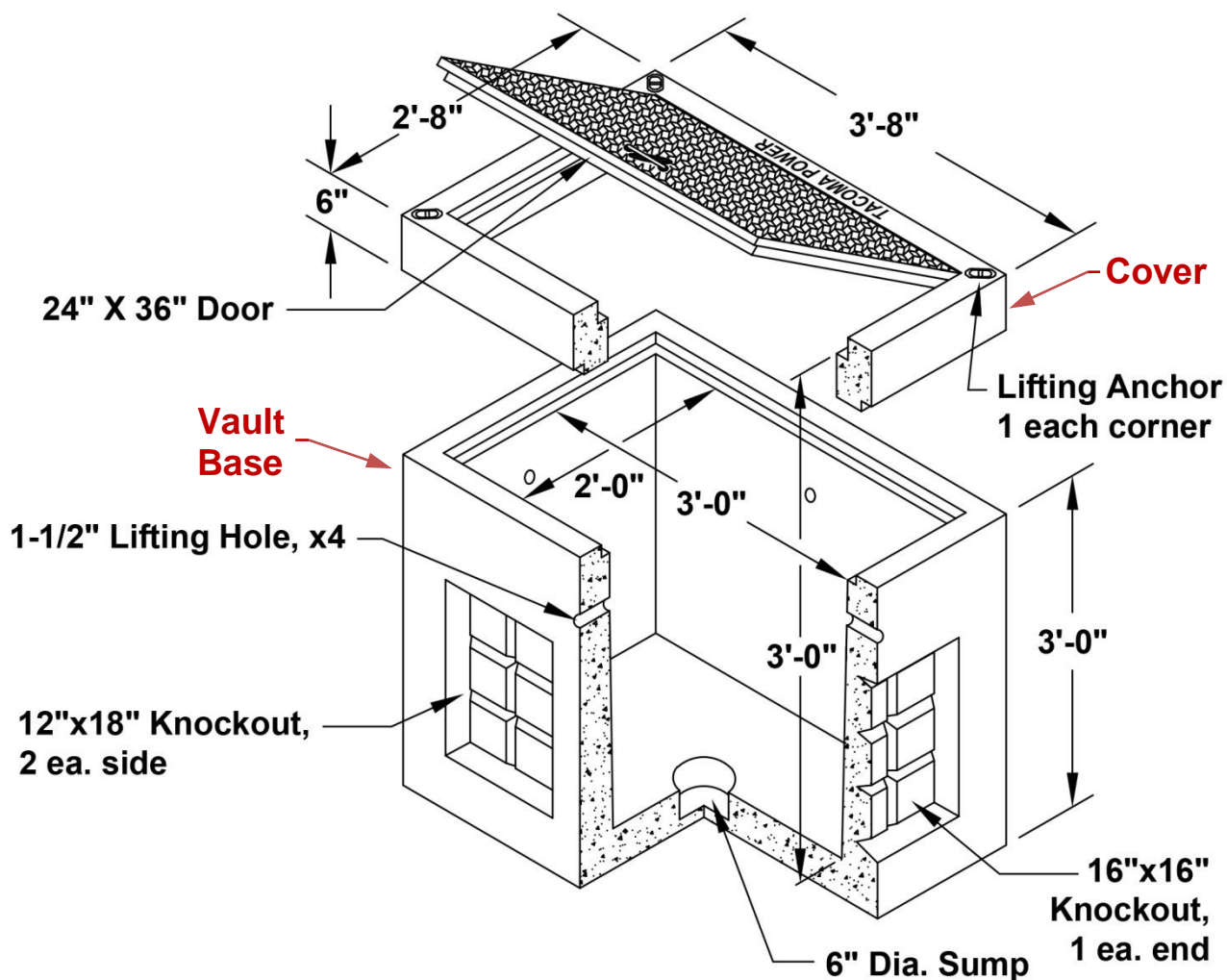
General Notes

- All vaults and covers (*except for 233 and E3 vaults*) shall be self-grounding (internally grounded), concrete-encased electrodes with grounding/bonding inserts, meeting all the provisions of NESC Rule 094B6.
- All vault bases, covers (*except for E3 covers*), doors and risers shall be constructed to AASHTO H20 traffic loading or better. 554 Junction Box vault and cover is available for AASHTO **H30** traffic loading.
- All doors (hatches) rated for off-street/incidental (unintentional) traffic locations only.
- Only 687, 814, 818, and 10x20 vaults with manhole covers able to be placed in traffic locations.
- All vault covers shall have Meadow-Burke fittings at each corner according to manufacturer's specifications.
- All weights listed are approximate only.

Precast Concrete Vaults

A-UG-1150

233 Vault

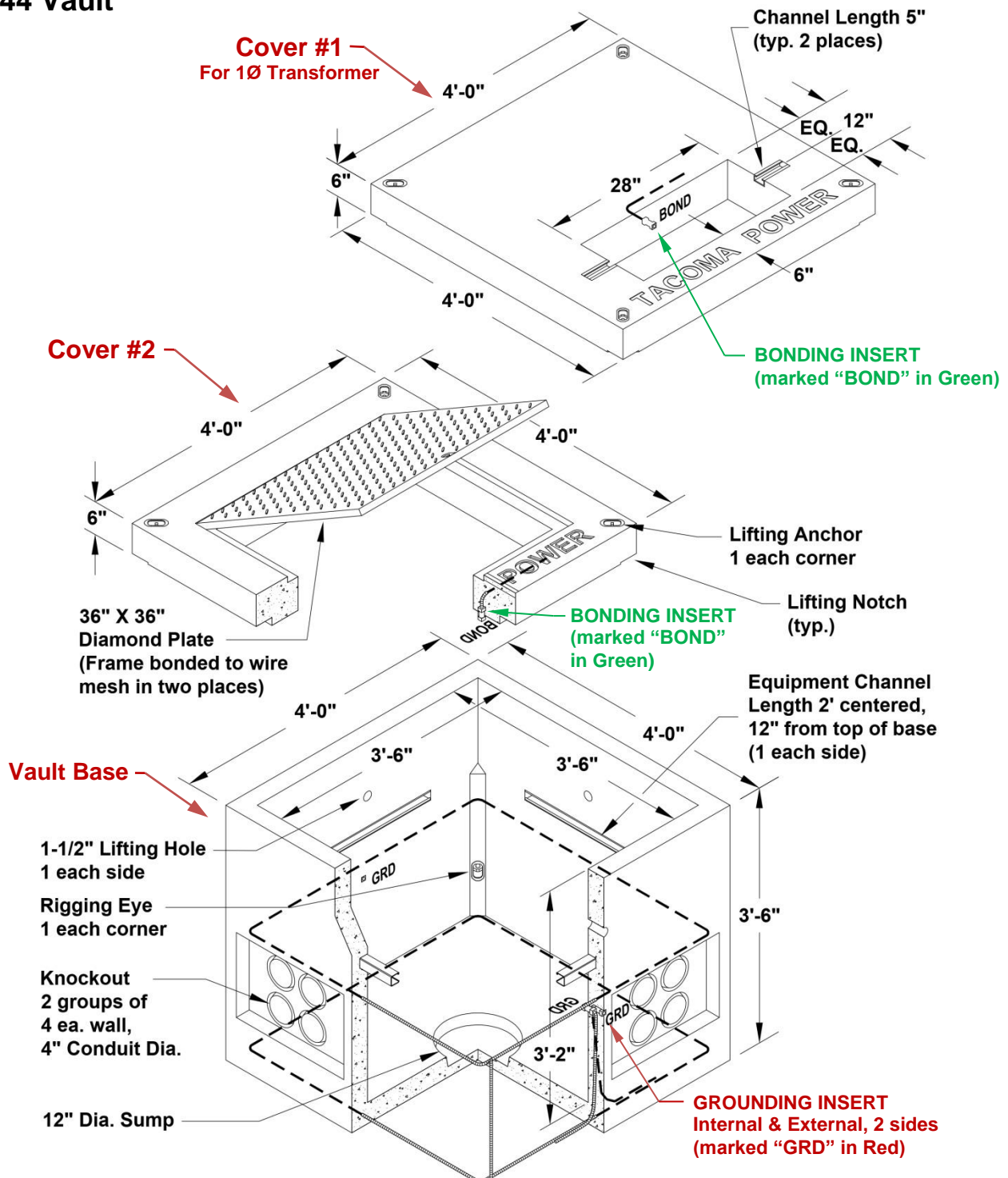


DESCRIPTION: Vault, concrete, type 233, 3ft-8in x 2ft-8in x 3ft base, cover is 2ft- 8in x 3ft-8in x 6 in with 24in x 36in hinged diamond plate aluminum door, knockouts shall be minimum 16in x 16in each end and minimum 12in x 18in – two sets each side

Material	MID#
233 Vault Base (2,000 lbs)	35057
233 Vault Cover Standard (450 lbs)	34669
233 Vault Cover Non-skid (450 lbs)	34671
233 Riser, 6in (290 lbs)	39828
233 Riser, 4in (200 lbs)	79985

APPLICATION: Commercial Secondary Service Box.

444 Vault



DESCRIPTION: Vault, concrete, type 444, 4ft x 4ft x 3ft-6in base, junction box cover #2 is 4ft x 4ft x 6in with 3ft x 3ft hinged diamond plate aluminum door, transformer cover #1 is 4ft x 4ft x 6in with 12in x 28in blockout opening

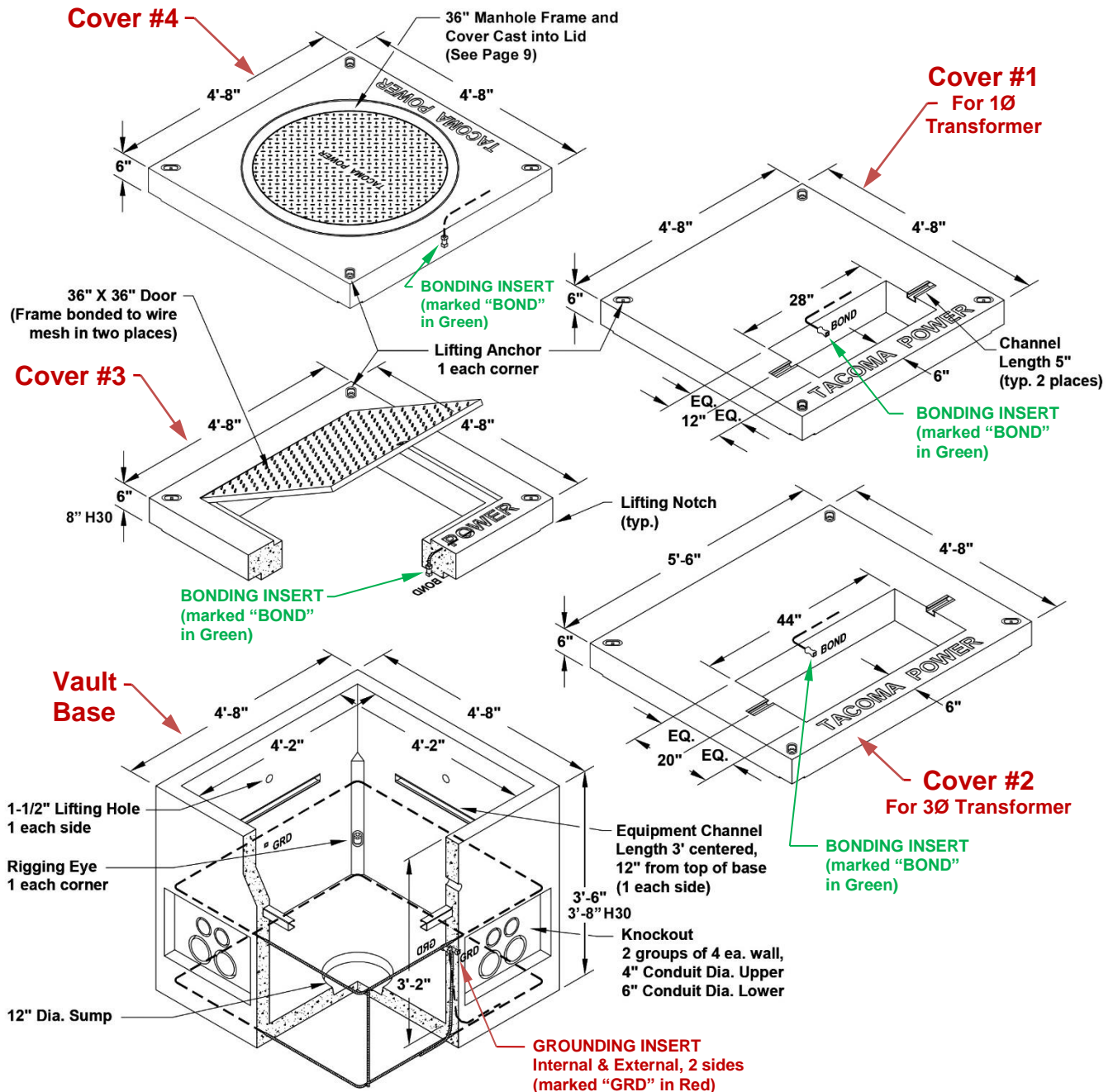
444 Vault *(continued)*

Material	MID#
444 Vault Base (4,000 lbs)	21163
444 Transformer Cover #1 (for 1Ø Transformers 25 to 75 kVA) (900 lbs)	19451
444 Transformer Cover #1 (for 1Ø Transformers 25 to 75 kVA), Blockout Opening Formed as a Knockout ^[1] (900 lbs)	46371
444 Junction Box Cover #2 Standard (900 lbs)	19447
444 Junction Box Cover #2 Non-Skid (900 lbs)	19449
444 Riser, 6in (440 lbs)	39970
444 Riser, 12in (1100 lbs)	43252
444 Riser, 4in (280 lbs)	79986

^[1] Special order only

APPLICATION: 1Ø Junction Box, Small 1Ø Padmount Transformers (25 kVA to 75 kVA).

554 Vault



DESCRIPTION: Vault, concrete, type 554, 4ft-8in x 4ft-8in x 3ft-6in base, (3ft-8in base for H30), single-phase transformer cover #1 is 4ft-8in x 4ft-8in x 6in with 12in x 28in blockout opening, three-phase transformer cover #2 is 5ft-6in x 4ft-8in x 6in with 20in x 44in blockout opening, junction box cover #3 is 4ft-8in x 4ft-8in x 6in (8in for H30) with 3ft x 3ft hinged diamond plate aluminum door, junction box cover #4 is 4ft-8in x 4ft-8in x 6in with integral 36in manhole frame and cover

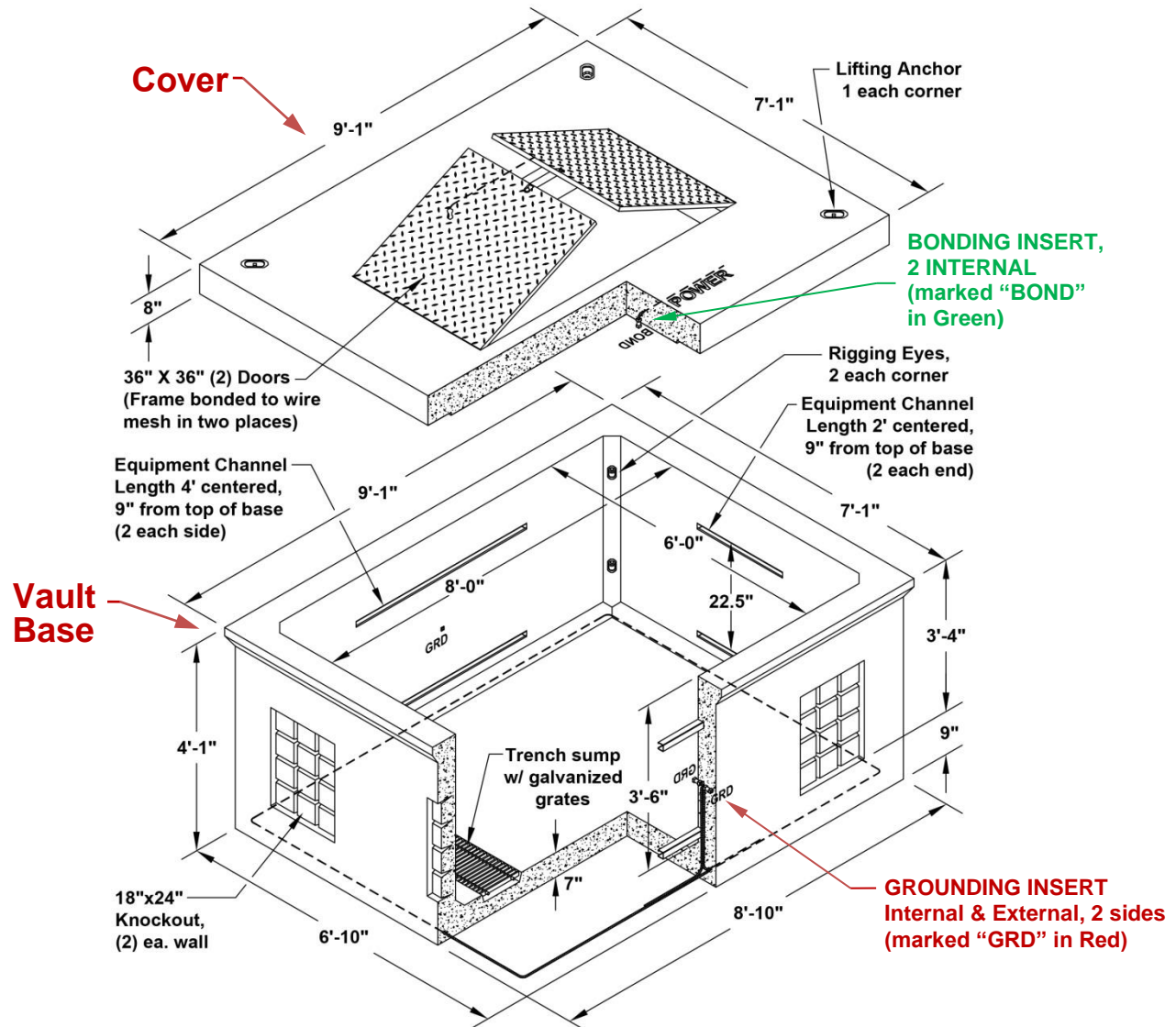
554 Vault *(continued)*

Material	MID#
554 Vault Base (4,000 lbs)	21165
554 Transformer Cover #1 for 1Ø Transformers 100 to 167 kVA (1,630 lbs)	19457
554 Transformer Cover #2 for 3Ø Transformers 45 to 300 kVA and 1-Position In & Out Vacuum Switch Cabinet (1,550 lbs)	19459
554 Junction Box Cover #3 Standard (1,400 lbs)	19453
554 Junction Box Cover #3 Non-skid (1,400 lbs)	19455
554 Junction Box Cover with 36in Manhole Frame and Cover #4 (1,250 lbs) ^[1]	64807
554 Riser, 6in, H20 and H30 rated (540 lbs)	39972
554 Riser, 12in, H20 and H30 rated (1,100 lbs)	43254
554 Riser, 4in, H20 and H30 rated (400 lbs)	79987
554 Vault Base, H30 Loading Rated (3,940 lbs)	79664
554 Junction Box Cover, H30 Loading Rated (1,750 lbs)	79665
554 Junction Box Cover, H30 Loading Rated Non-skid (1,750 lbs)	79666

^[1] 554 vault with 36in manhole cover not intended for traffic locations. Place in parking lot, driveway or alley way locations only.

APPLICATION: 3Ø Junction Box, Large 1Ø Transformers (100 kVA to 167 kVA), Small 3Ø Transformers (45 kVA to 300 kVA), 1-Position In & Out Vacuum Switch Cabinet or Commercial Secondary Service Box.

684 Vault



DESCRIPTION: Vault with cover, concrete, type 684, 9ft-1in x 7ft-1in x 4ft-9in, two 3ft x 3ft hinged diamond plate aluminum doors in cover

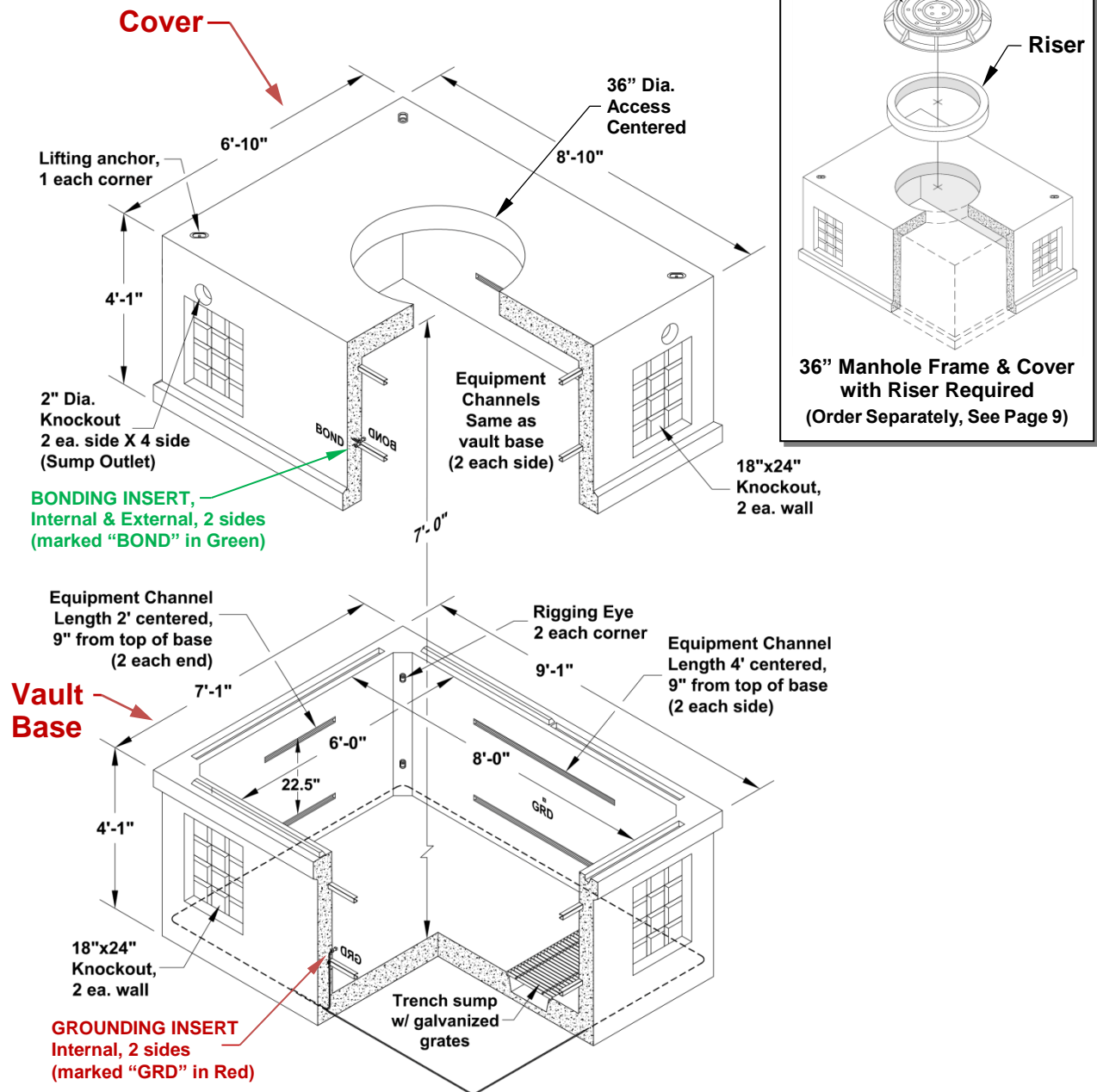
Material	MID#
684 Vault Base (11,000 lbs)	21169
684 Cover Standard (5,000 lbs)	63355
684 Cover Non-Skid (5,000 lbs)	21171

APPLICATION: Feeder splice/pull-box for single circuit for off-street/incidental (unintentional) traffic locations.

Precast Concrete Vaults

A-UG-1150

687 Vault



DESCRIPTION: Vault with cover, concrete, type 687, 9ft-1in x 7ft-1in x 8ft-2in, 36in manhole access

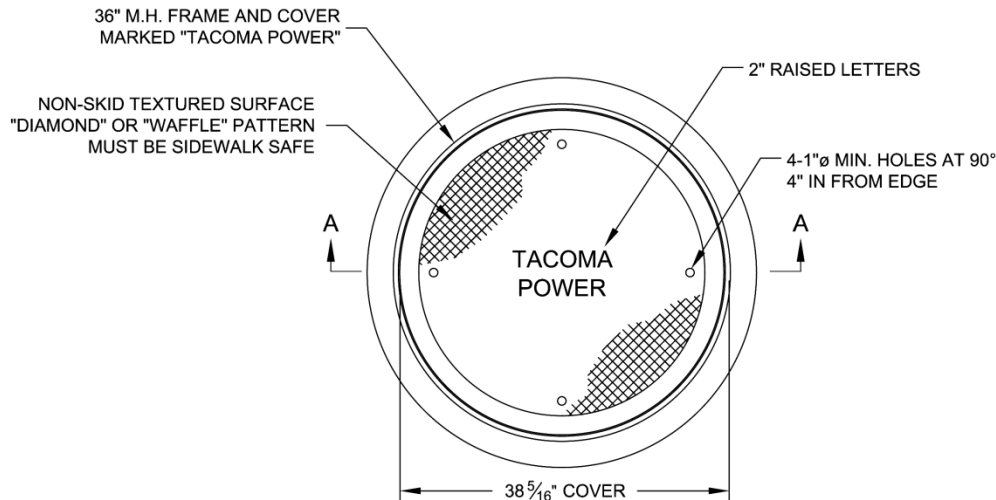
Material	MID#
687 Vault Base (10,000 lbs)	39978
687 Vault Cover with 36in Manhole Access (10,000 lbs)	63356

APPLICATION: Feeder splice/pull-box for multiple circuits in traffic locations.

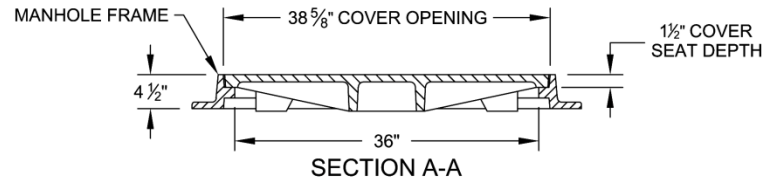
Precast Concrete Vaults

A-UG-1150

Manhole Frame and Cover, 36in, H20 Traffic Loading



36" M.H. FRAME W/COVER STD H20 LOADING



DESCRIPTION: Frame and cover, manhole, 36in, rated for H20 traffic loading, to meet AASHTO Designation M306-10, cover is 38-5/16in diameter, ductile iron, to have four 1in dia. lifting holes, lettered "TACOMA POWER" in 2in raised letters, frame is gray iron, all such castings are to be the EJ 1581 series or approved equal

Material	MID#
Manhole Frame and Cover, 36in, H20 Loading (550 lbs)	20558
Manhole Cover only, 36in, H20 Loading (375 lbs)	19426
Riser, 4in ^[1] (340 lbs)	39976

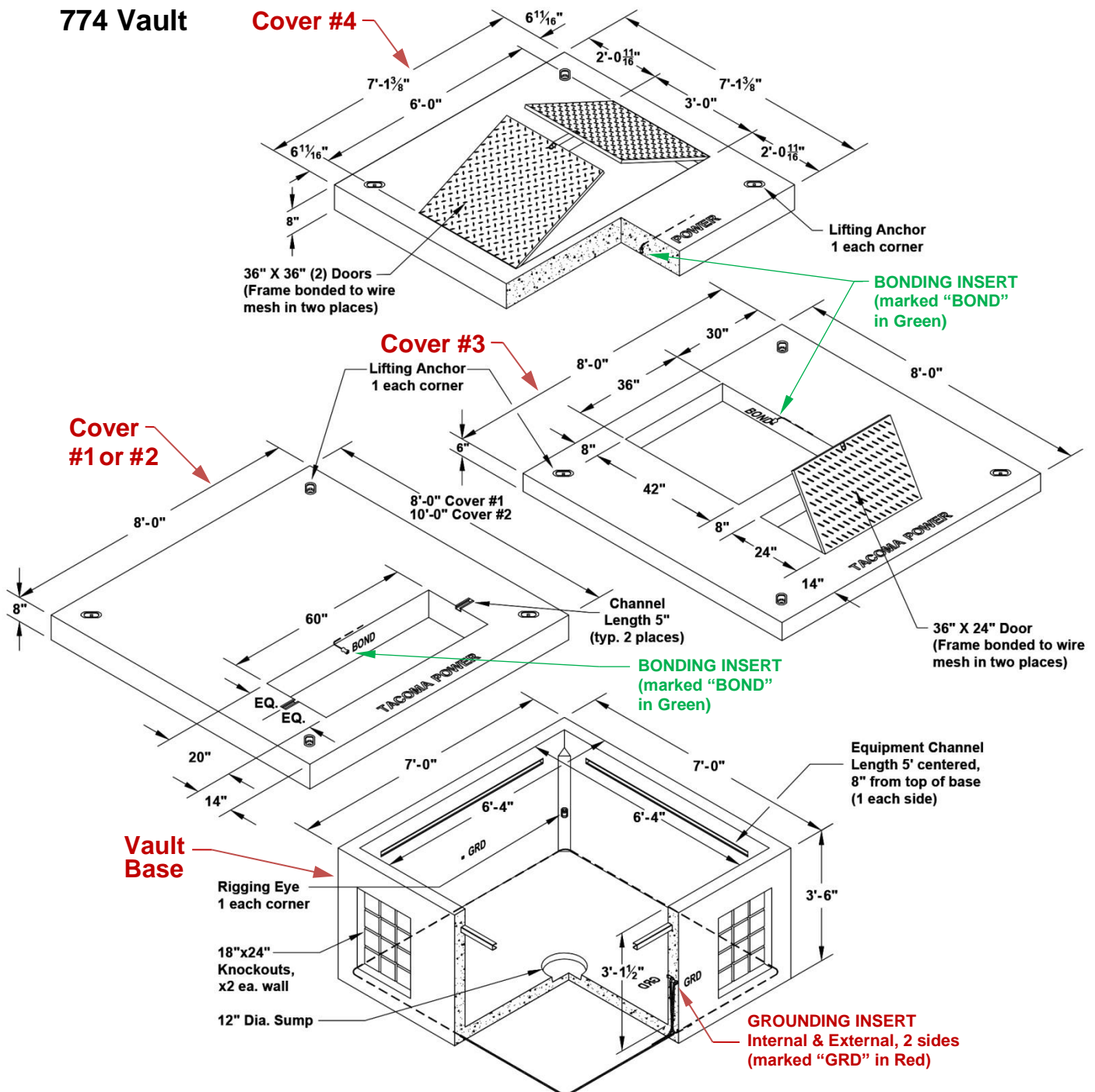
^[1] Also available in 6in and 12in from vendor

APPLICATION: Manhole access cover for 687 vaults in traffic locations.
554 vault with 36in manhole frame and cover not intended for traffic locations.
Placement in parking lot, driveway or alley way locations is acceptable.

Precast Concrete Vaults

A-UG-1150

774 Vault



DESCRIPTION: Vault, concrete, type 774, 7ft x 7ft x 3ft-6in base, 3Ø transformer/primary metering cabinet cover #1 is 8ft x 8ft x 8in with 20in x 60in blockout opening, 3Ø transformer cover #2 is 8ft x 10ft x 8in with 20in x 60in blockout opening, secondary service cabinet cover #3 is 8ft x 8ft x 6in with 3ft x 2ft hinged diamond plate aluminum door and 36in x 42in blockout opening, secondary service box cover #4 is 7ft-1in x 7ft-1in x 8in with two 3ft x 3ft hinged diamond plate aluminum doors

774 Vault *(continued)*

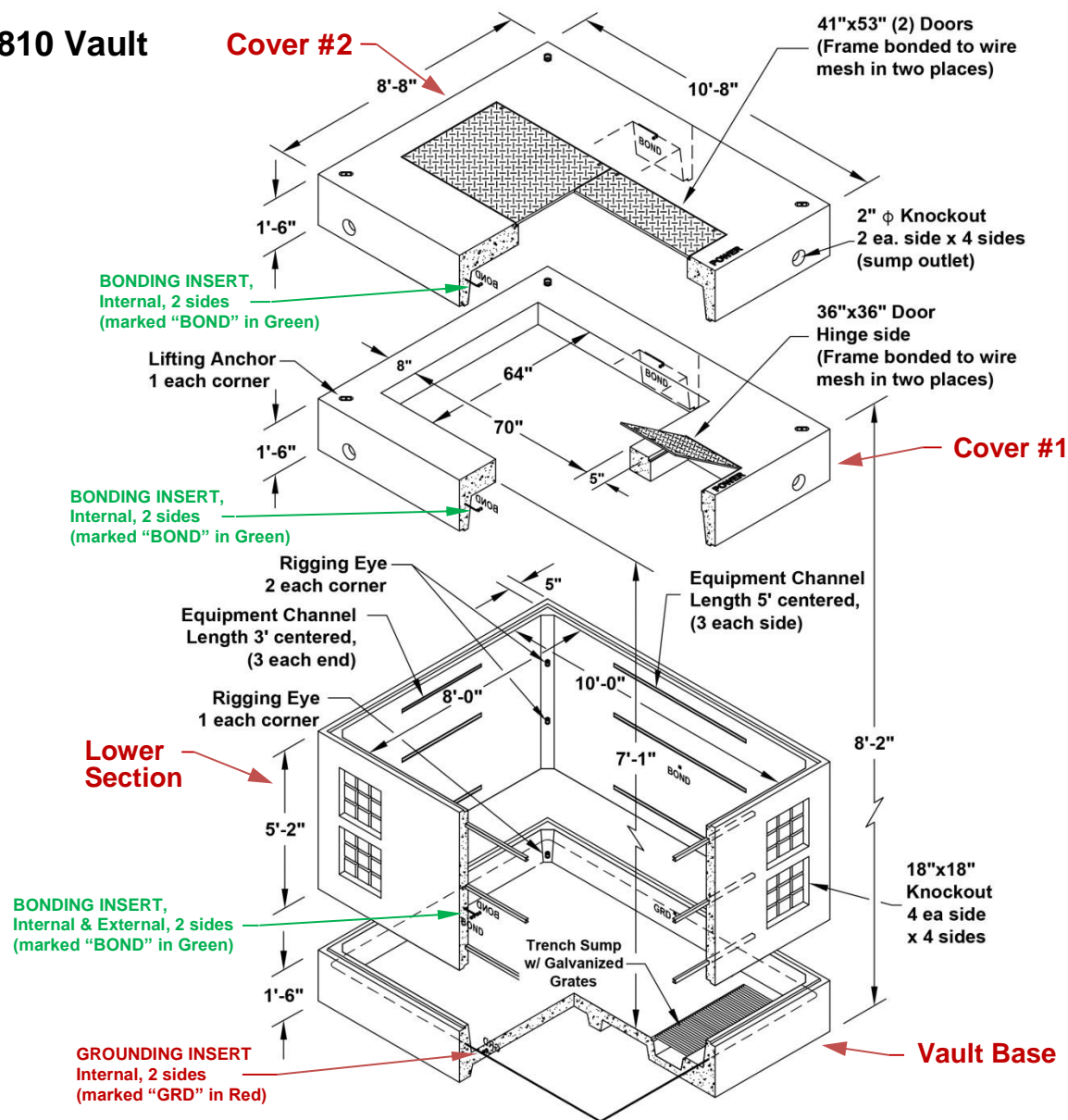
Material	MID#
774 Vault Base (7,500 lbs)	21167
774 Transformer (500 kVA to 1500 kVA) or Primary Meter Cabinet Cover #1, 8ft x 8ft (5,600 lbs)	19461
774 Transformer (2000 kVA to 2500 kVA) Cover #2, 8ft x 10ft (7,200 lbs)	19463
774 Secondary Service Cabinet Cover #3 (5,000 lbs)	50893
774 Secondary Service Box Cover #4 Standard (4,000 lbs)	67541
774 Secondary Service Box Cover #4 Non-skid (4,000 lbs)	67540
774 Riser, 6in (1,200 lbs)	39974
774 Riser, 12in (2,000 lbs)	43256

APPLICATION: Large 3Ø Transformers (500 kVA to 2500 kVA), 3Ø Primary Metering Cabinet, Secondary Service Cabinet, or Commercial Secondary Service Box.

Precast Concrete Vaults

A-UG-1150

810 Vault

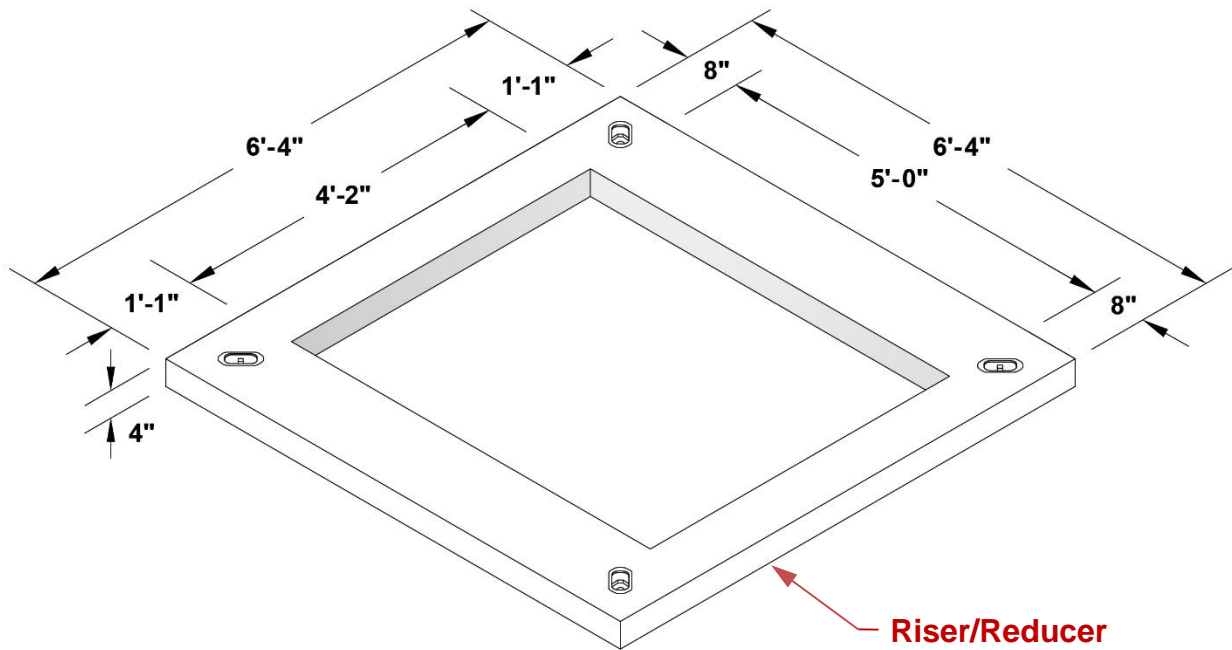


DESCRIPTION: Vault with cover, concrete, type 810, 10ft-8in x 8ft-8in x 8ft-2in, padmount switchgear cover #1 is 8ft-8in x 10ft-8in x 1ft-6in with 3ft x 3ft hinged diamond plate aluminum door and 70in x 64in blockout opening, splice vault cover #2 has two 41in x 53in hinged diamond plate doors

Material	MID#
810 Vault (Vault Base 10,200 lbs / Lower Section 9,200 lbs)	60564
810 Switchgear Cover #1 Standard (9,200 lbs)	63354
810 Switchgear Cover #1 Non-Skid (9,200 lbs)	60566
810 Splice Vault Cover #2 Non-Skid (7,900 lbs)	39980
76in x 70in x 6in slab (temporary cover over Cover #1 blockout as needed) (2,800 lbs)	79773

APPLICATION: Padmount Switchgear or Feeder splice/pull-box for off-street / incidental (unintentional) traffic locations.

810 Riser/Reducer – Use with Type 10 Padmount Switchgear



DESCRIPTION: Riser/Reducer, 6ft-4in x 6ft-4in with 5ft x 4ft-2in blockout

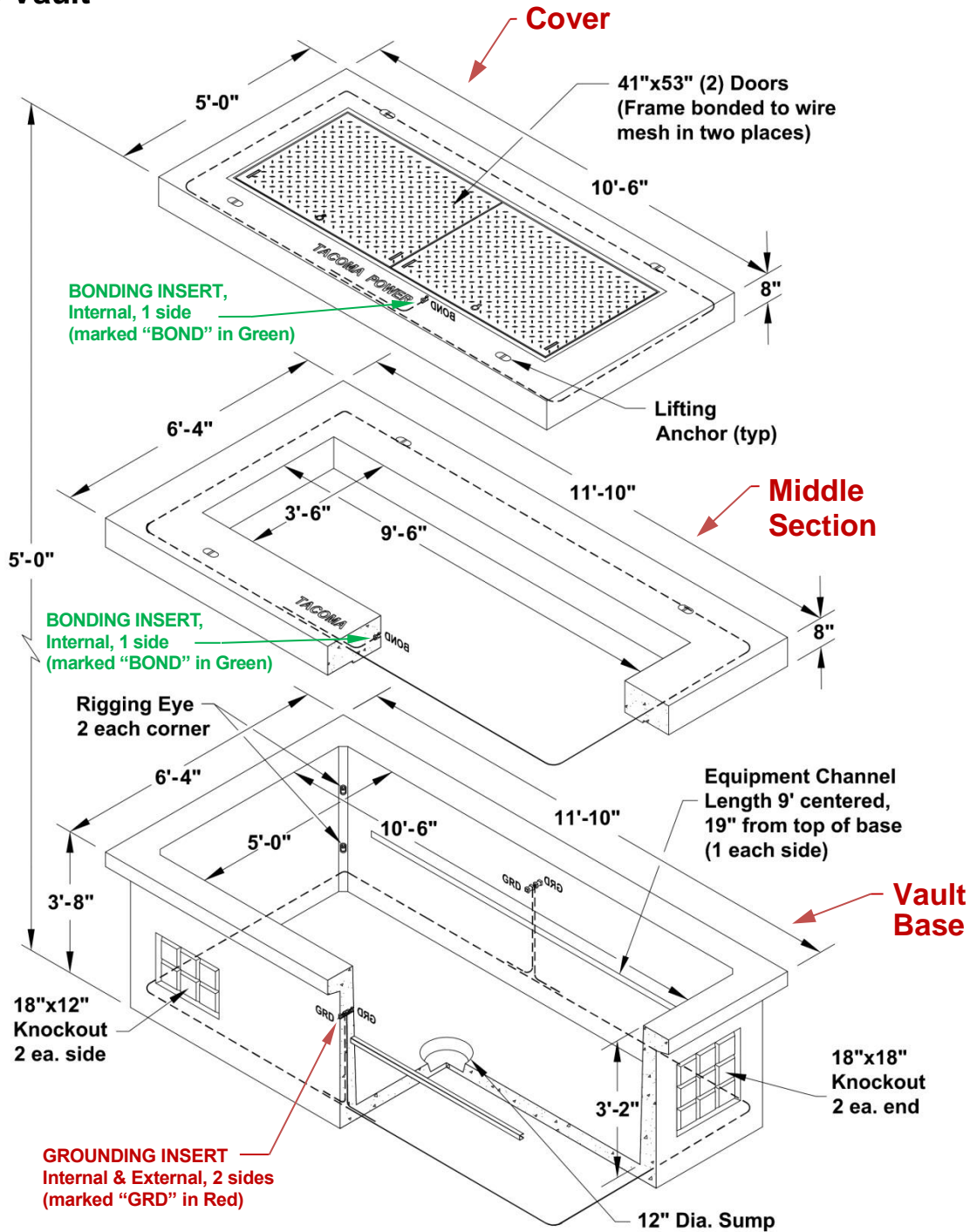
Material	MID#
810 Riser/Reducer (1,000 lbs)	70489

APPLICATION: Place riser/reducer on top of switchgear cover #1 when need to place Type 10 padmount switchgear onto 810 vault.

Precast Concrete Vaults

A-UG-1150

5106 Vault



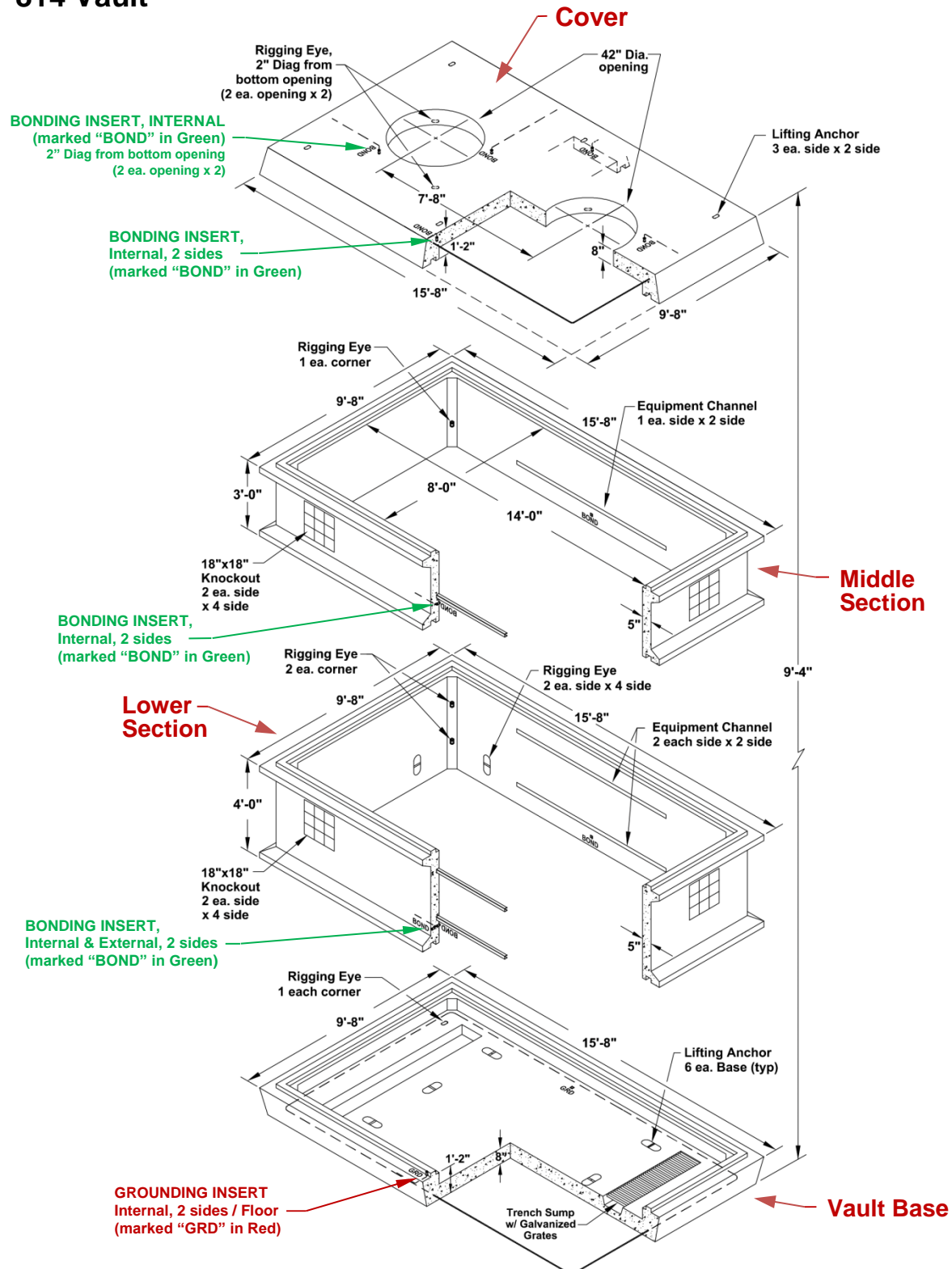
DESCRIPTION: Vault base with cover and middle section, concrete, Type 5106, 11ft-10in x 6ft-4in x 3ft-8in base with 11ft-10in x 6ft-4in x 8in riser and 10ft-6in x 5ft x 6in cover, cover has two 41in x 53in hinged diamond plate aluminum doors

5106 Vault *(continued)*

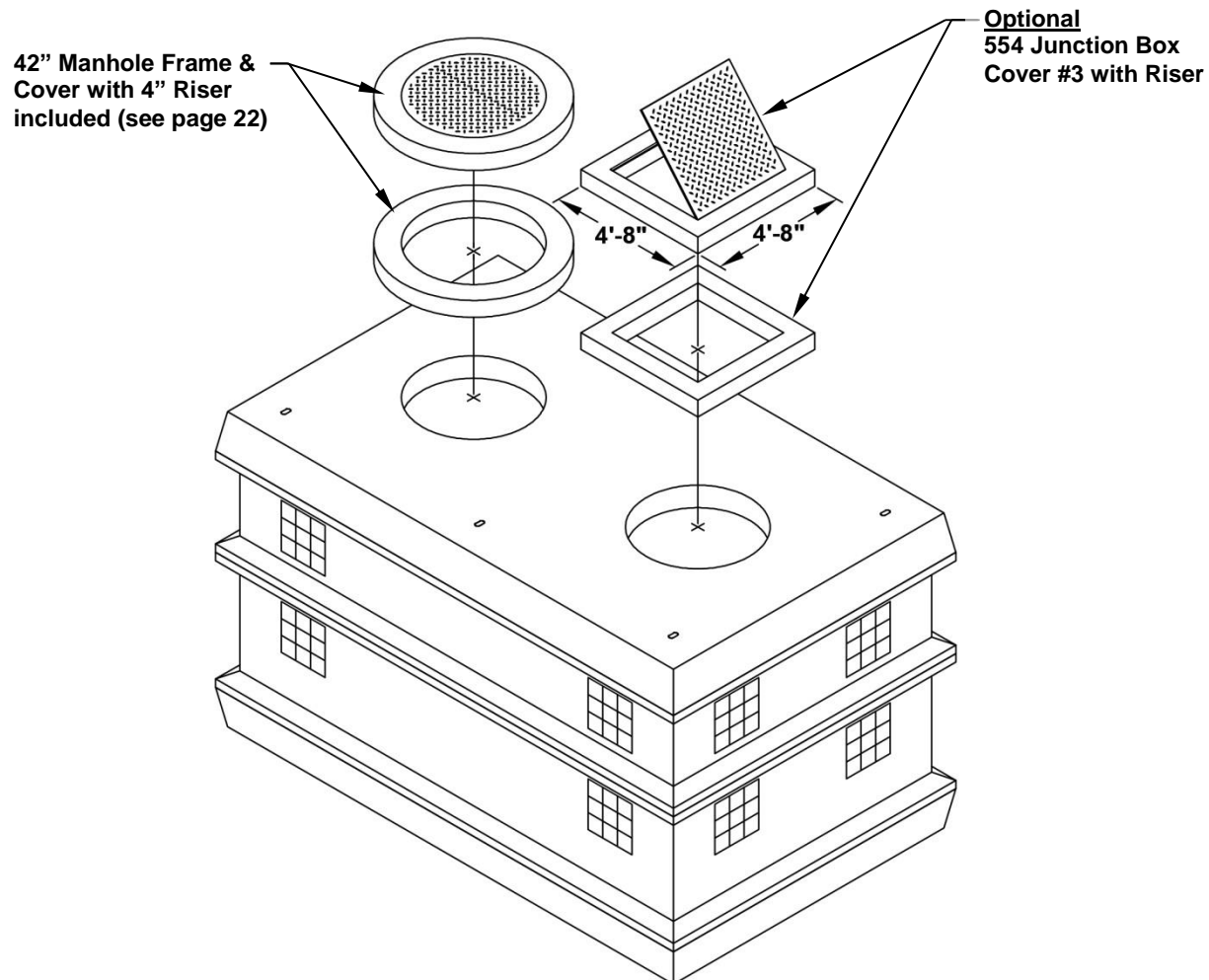
Material	MID#
5106 Vault Base (10,000 lbs) with Cover Non-Skid (3,500 lbs) and 8in Middle Section (3,500 lbs)	48250

APPLICATION: Used in urban sidewalks for high load density areas (i.e. multi-floor buildings and/or numerous commercial and residential customers) where outage coordination for a new service installation would be difficult. All three tap boxes placed on same sidewall providing enough working room to pull new customer cables into an energized junction box avoiding outages to existing customers.

814 Vault



814 Vault (continued)

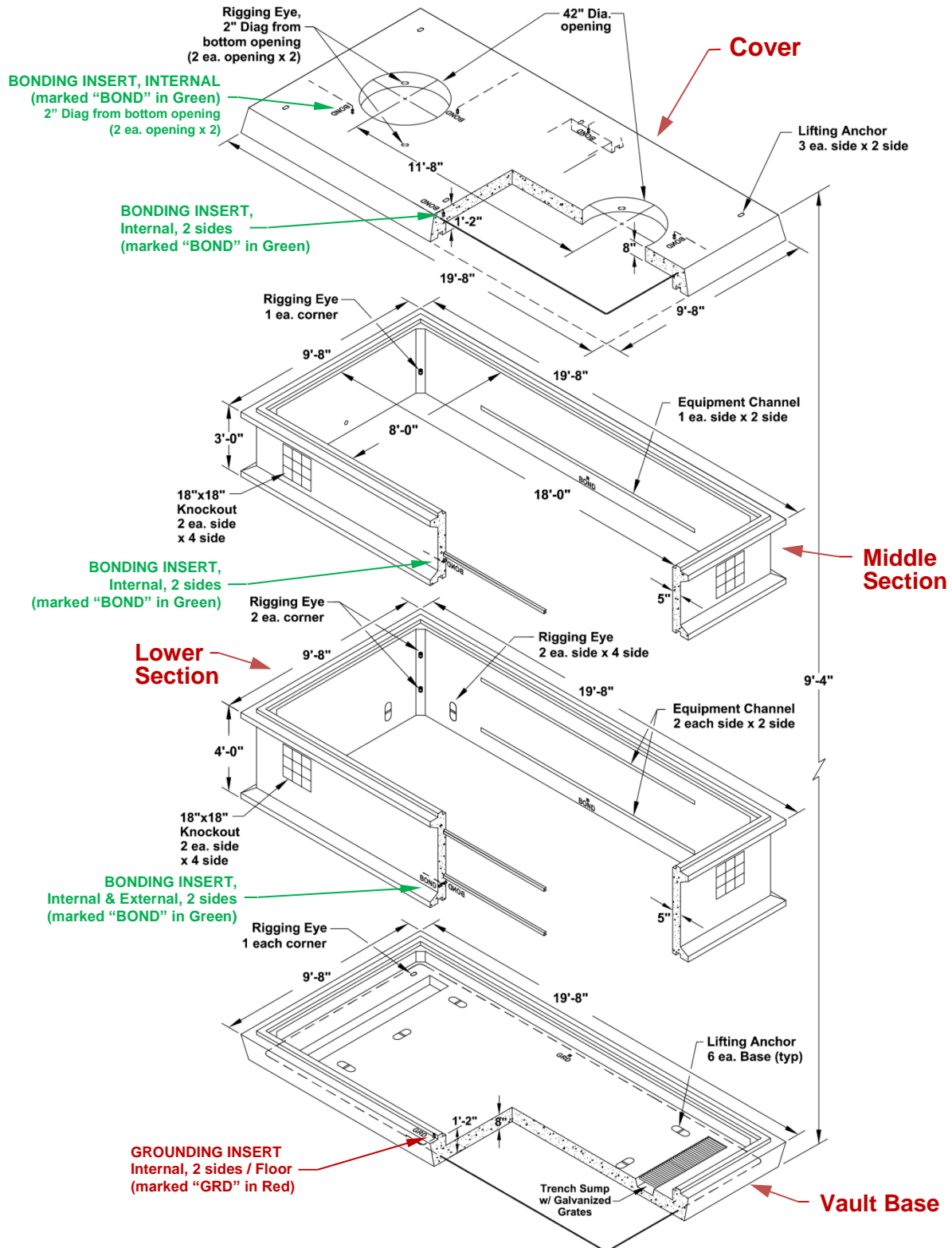


DESCRIPTION: Vault with cover, concrete, type 814, 15ft–8in x 9ft–8in x 9ft–4in, with two 42in manhole access in cover, two 42in manhole frame and cover and 4in concrete riser included

Material	MID#
814 Vault (Vault Base 17,000 lbs / Lower Section 11,700 lbs / Middle Section 9,200 lbs) and Cover (16,000 lbs) with two 42in manhole access, two 42in manhole frame and cover and 4in concrete riser included	48256

APPLICATION: 600A UG feeder junction box or feeder pull vault for multiple circuits. For off-street / incidental (unintentional) traffic locations, use 554 Junction Box Cover #3 (standard MID 19453 or non-skid MID 19455) with 554 riser(s) (6in MID 39972 or 12in MID 43254). In traffic areas, use the 42in manhole frame & cover (MID 67978) with 4in riser(s) (MID 68010). Risers are used to set the vault deep enough to allow for future street and sidewalk grinding/grade adjustment.

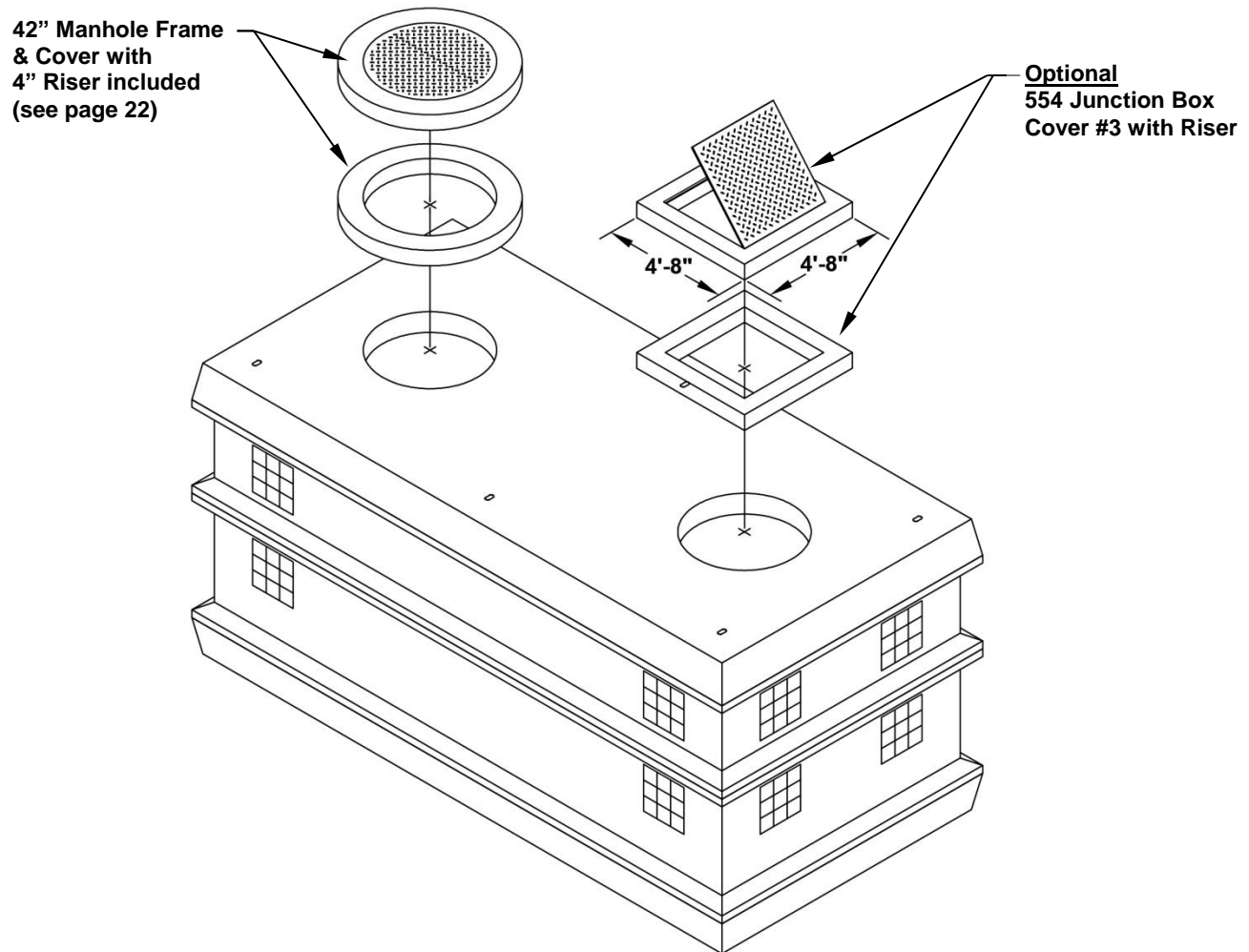
818 Vault



Precast Concrete Vaults

A-UG-1150

818 Vault (continued)



DESCRIPTION: Vault with cover, concrete, type 818, 19 ft–8 in x 9 ft–8 in x 9 ft–4 in, with two 42in manhole access in cover, two 42in manhole frame and cover and 4in concrete riser included

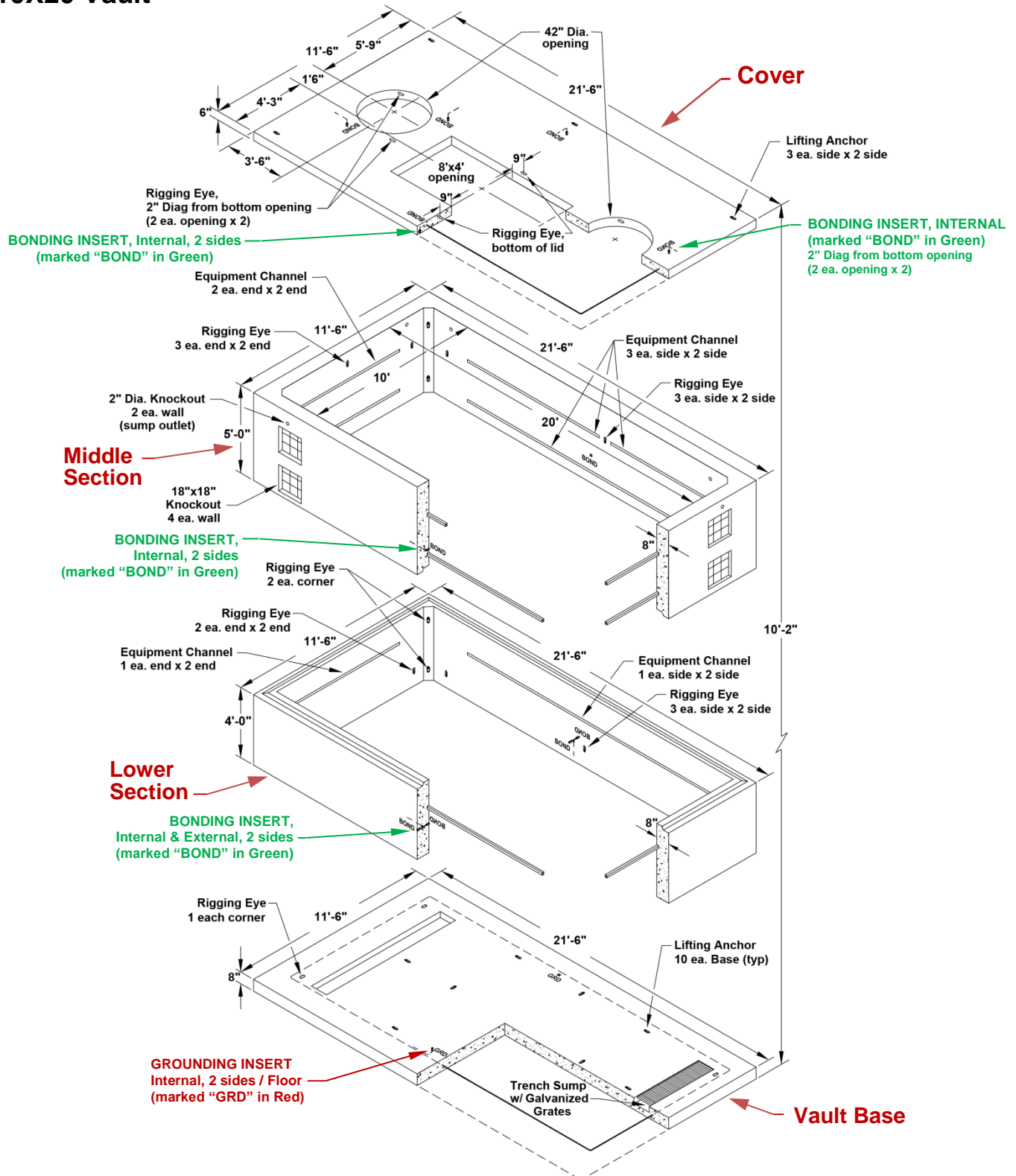
Material	MID#
818 Vault (Vault Base 16,700 lbs / Lower Section 11,700 lbs / Middle Section 9,200 lbs) and Cover (16,000 lbs) with two 42in manhole access, two 42in manhole frame and cover and 4in concrete riser included	48387

APPLICATION: 600A UG feeder junction box or feeder pull vault for multiple circuits. For off-street / incidental (unintentional) traffic locations, use 554 Junction Box Cover #3 (standard MID 19453 or non-skid MID 19455) with 554 riser(s) (6in MID 39972 or 12in MID 43254). In traffic areas, use the 42in manhole frame & cover (MID 67978) with 4in riser(s) (MID 68010). Risers are used to set the vault deep enough to allow for future street and sidewalk grinding/grade adjustment.

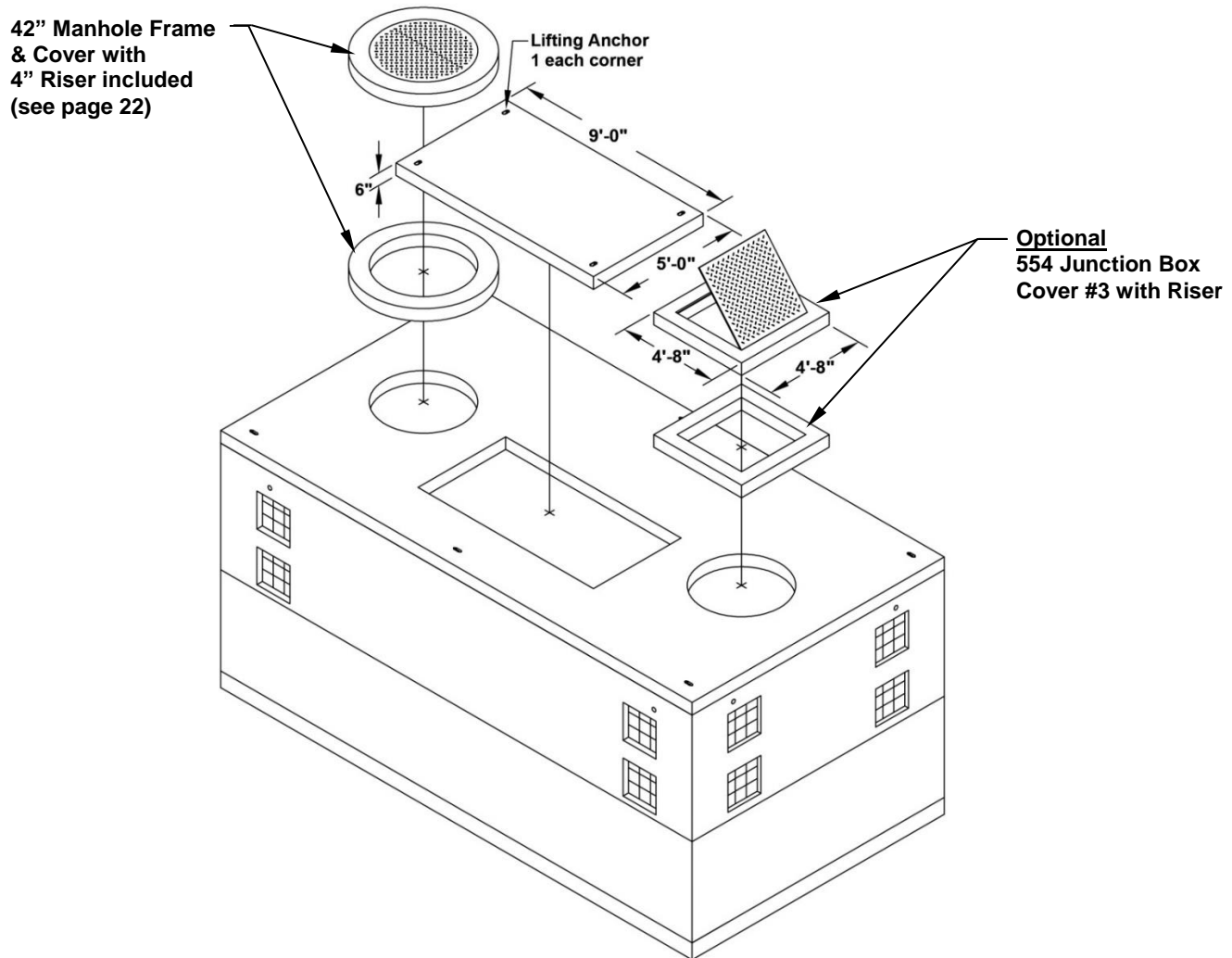
Precast Concrete Vaults

A-UG-1150

10X20 Vault



10X20 Vault *(continued)*

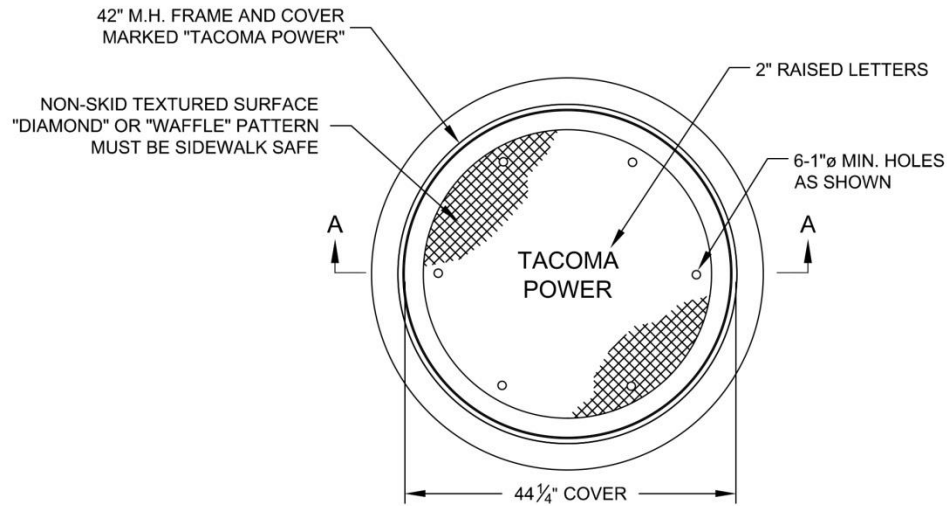


DESCRIPTION: Vault, panel, with cover, concrete, type 10' x 20', 21ft-6in x 11ft-6in x 10ft-6in, with two 42in manhole access and 8ft x 4ft blackout in cover, with 9ft x 5ft cover for blackout, two 42in manhole frame and cover and 4in concrete riser included

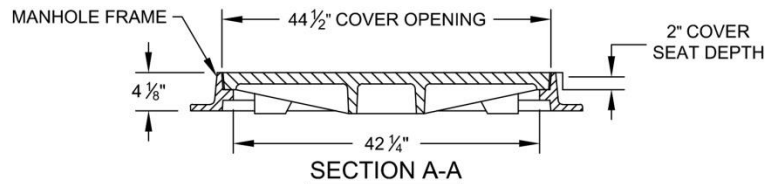
Material	MID#
10' X 20' Vault (Vault Base 24,800 lbs / Lower Section 28,350 lbs / Middle Section 35,400 lbs) and Cover (14,700 lbs) with two 42in manhole access, two 42in manhole frame and cover and 4in concrete riser included	48257

APPLICATION: Submersible switchgear vault with multiple feeder circuits. For off-street/incidental (unintentional) traffic locations, use 554 Junction Box Cover #3 (standard MID 19453 or non-skid MID 19455) with 554 riser(s) (6in MID 39972 or 12in MID 43254). In traffic areas, use the 42" manhole frame & cover (MID 67978) with 4in riser(s) (MID68010). Risers are used to set the vault deep enough to allow for future street and sidewalk grinding/grade adjustment.

Manhole Frame and Cover, 42in, H20 Traffic Loading



42" M.H. FRAME W/COVER STD H20 LOADING



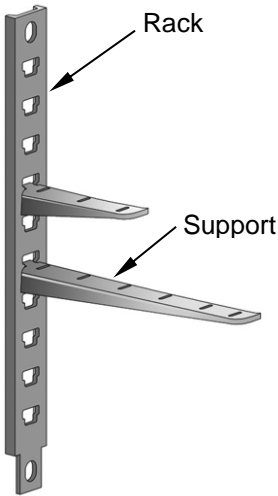

DESCRIPTION: Frame and cover, manhole, 42in, rated for H20 traffic loading, to meet AASHTO Designation M306-10, cover is 44-1/4in diameter, ductile iron, to have six 1in dia. lifting holes, lettered "TACOMA POWER" in 2in raised letters, frame is gray iron, all such castings are to be the EJ 1843/1845 series or approved equal

Material	MID#
Manhole Frame and Cover, 42in, H20 Loading (650 lbs)	67978
Manhole Cover only, 42in, H20 Loading (450 lbs)	67979
Riser, 4in ^[1] (340 lbs)	68010

^[1] Also available in 6in and 12in from vendor

APPLICATION: Manhole access cover for 814, 818, and 10' x 20' vaults in traffic locations.

Vault Accessories

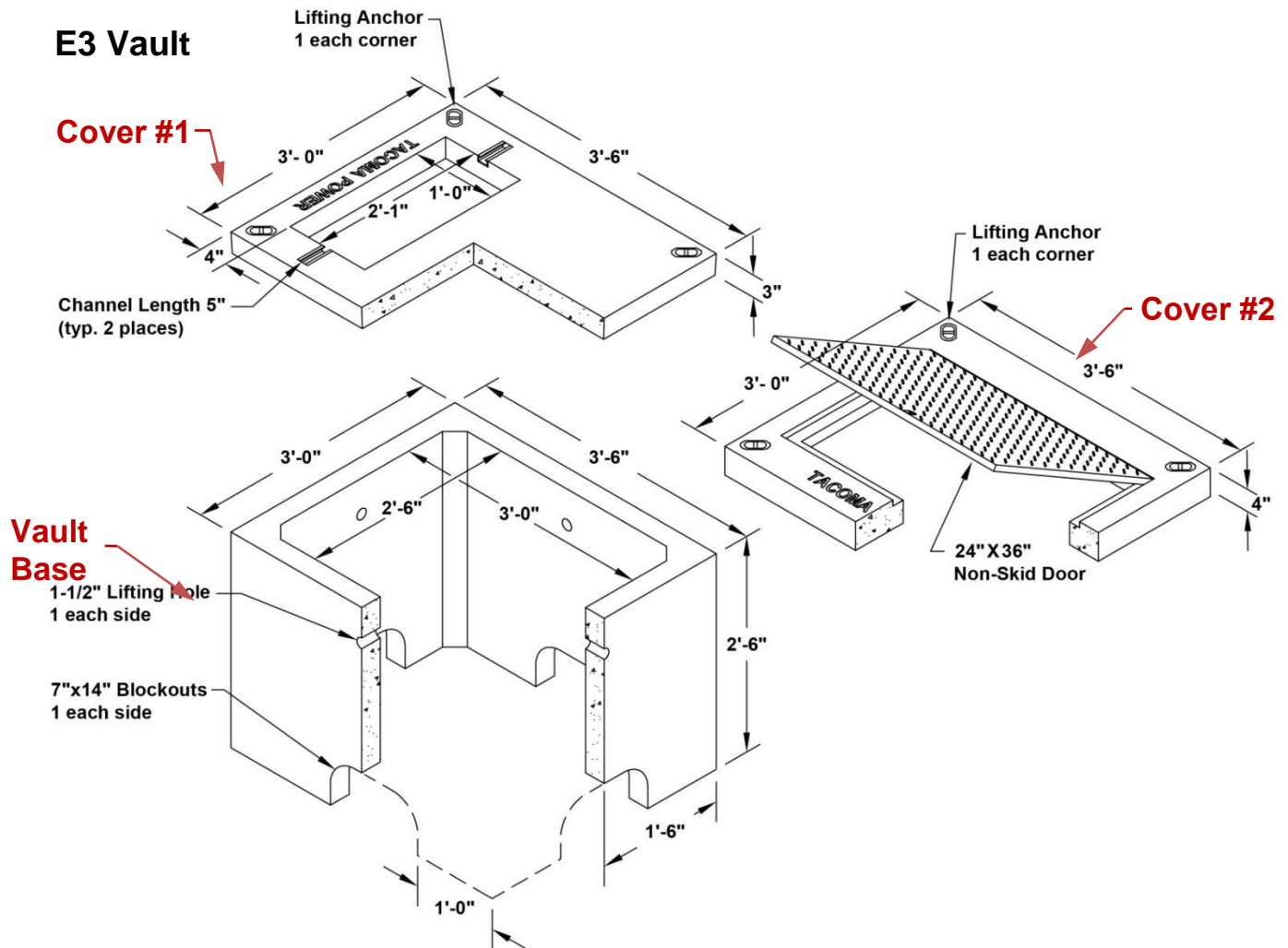
Item	Description	MID#
	<p>Cable <i>racks</i> and <i>supports</i> are used for supporting cable runs in vaults.</p>	<p><u>Rack</u> 24" – 52143 55" – 52144</p> <p><u>Support</u> 7" – 52145 14" – 52146 18" – 52147</p>
	Spring nut (exempt)	34872

Precast Concrete Vaults

A-UG-1150

FOR MAINTENANCE ONLY

E3 Vault



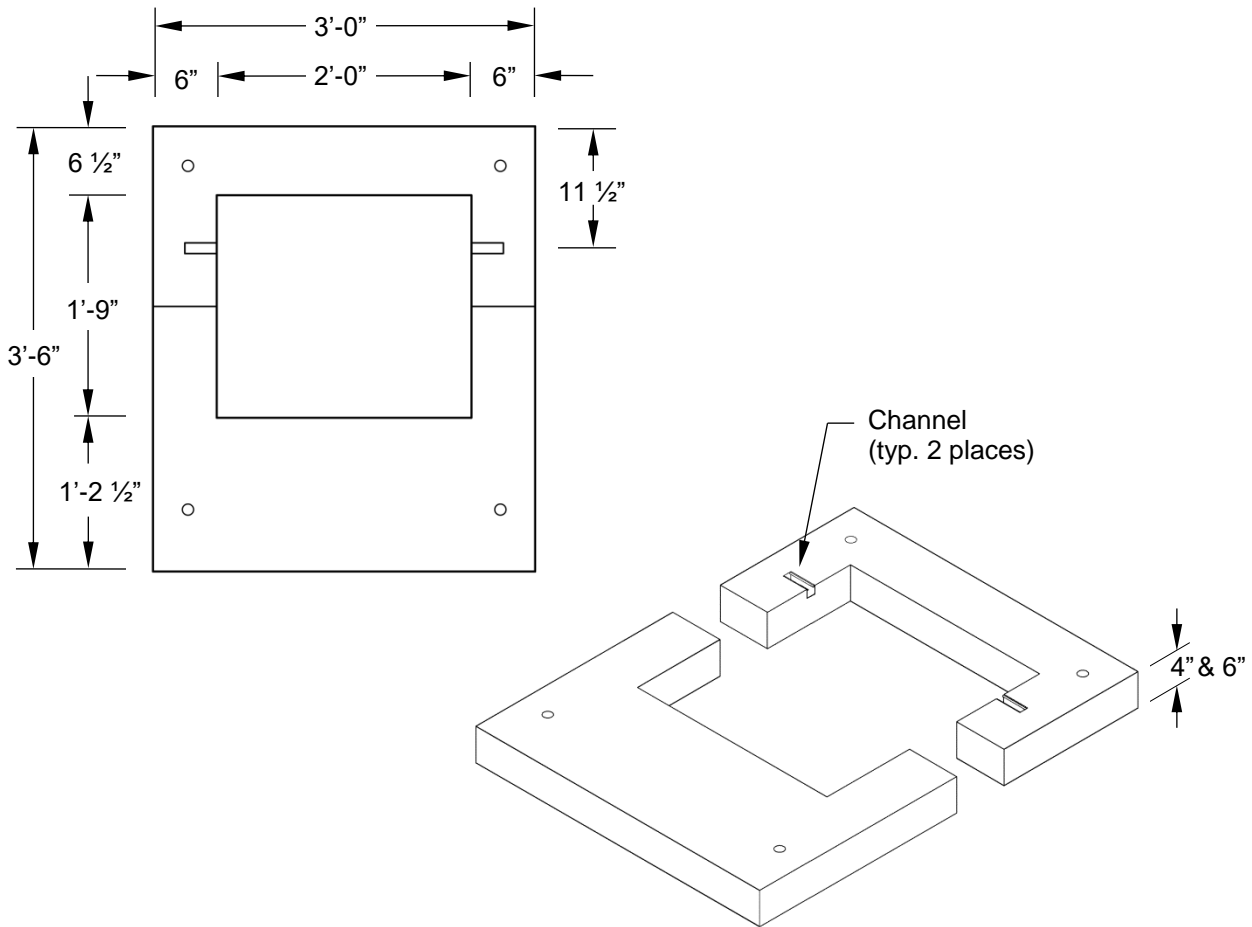
DESCRIPTION: Vault, concrete, E-3, 3ft x 3ft-6in x 2ft-6in base, open bottom, 7in x 14in blockout openings centered on each 3ft end, 7in x 14in blockout openings on each 3ft-6in side offset 1ft from end of base, transformer cover #1 is 3ft x 3ft-6in x 3in cover with 1ft x 2ft-1in blockout opening centered 4in from end, junction box cover #2 is 3ft x 3ft-6in x 4in cover with 2ft x 3ft hinged aluminum door

Material	MID#
E3 Vault Base (1,200 lbs)	43824
E3 Vault Transformer Cover #1 (700 lbs)	43825
E3 Vault Junction Box Cover #2 Non-skid (800 lbs)	67985

APPLICATION: For maintenance only, use for 1Ø padmount transformer or 1Ø junction box in areas with existing underground cable/conduit. Can be used as a secondary service box (SSB). Vault is not self-grounding, must bond to existing grounding or install separate grounding electrode. E3 vaults and covers are rated for pedestrian loads only; not rated for off-street/incidental (unintentional) traffic.

FOR MAINTENANCE ONLY

Split Riser



DESCRIPTION: Riser, Concrete, two piece split, 3ft x 3ft-6in, with 2ft x 1ft-9in blockout opening when fit together

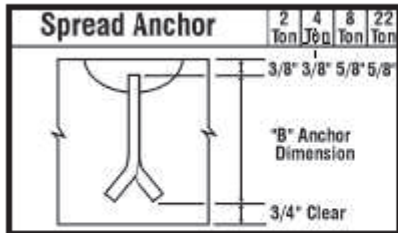
Material	MID#
Two Piece Riser, 4in, Two-Piece ^[1] (400 lbs)	60729
Two Piece Riser, 6in, Two-Piece (500 lbs)	50896

^[1] Special order only

APPLICATION: For maintenance only, used to provide concrete pad for existing 1Ø padmount transformers, where the original pad has failed or is too low, without having to disconnect the UG primary and secondary cables.

APPENDIX "D"

MEADOWBURKE ANCHOR DETAIL



RL-23

Ring Clutch System	Minimum Panel Thickness	Anchor Selection for Min Panel Thickness
2-ton	5-1/8"	79110
4-ton	7-3/8"	79116
8-ton	12-3/16"	79119
22-ton	20-1/4"	79774

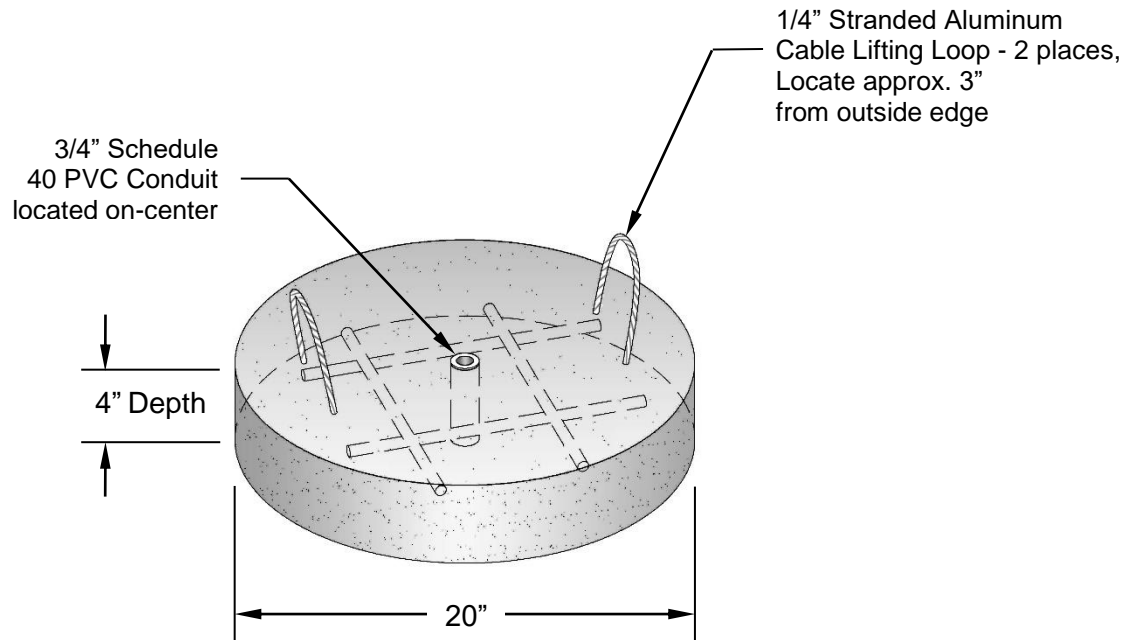
APPENDIX “E”

ANCHOR DRAWING

Material Specification PT23-0017F
Underground Precast
Concrete Vaults

MID #18922

Anchor, Concrete Round 20"

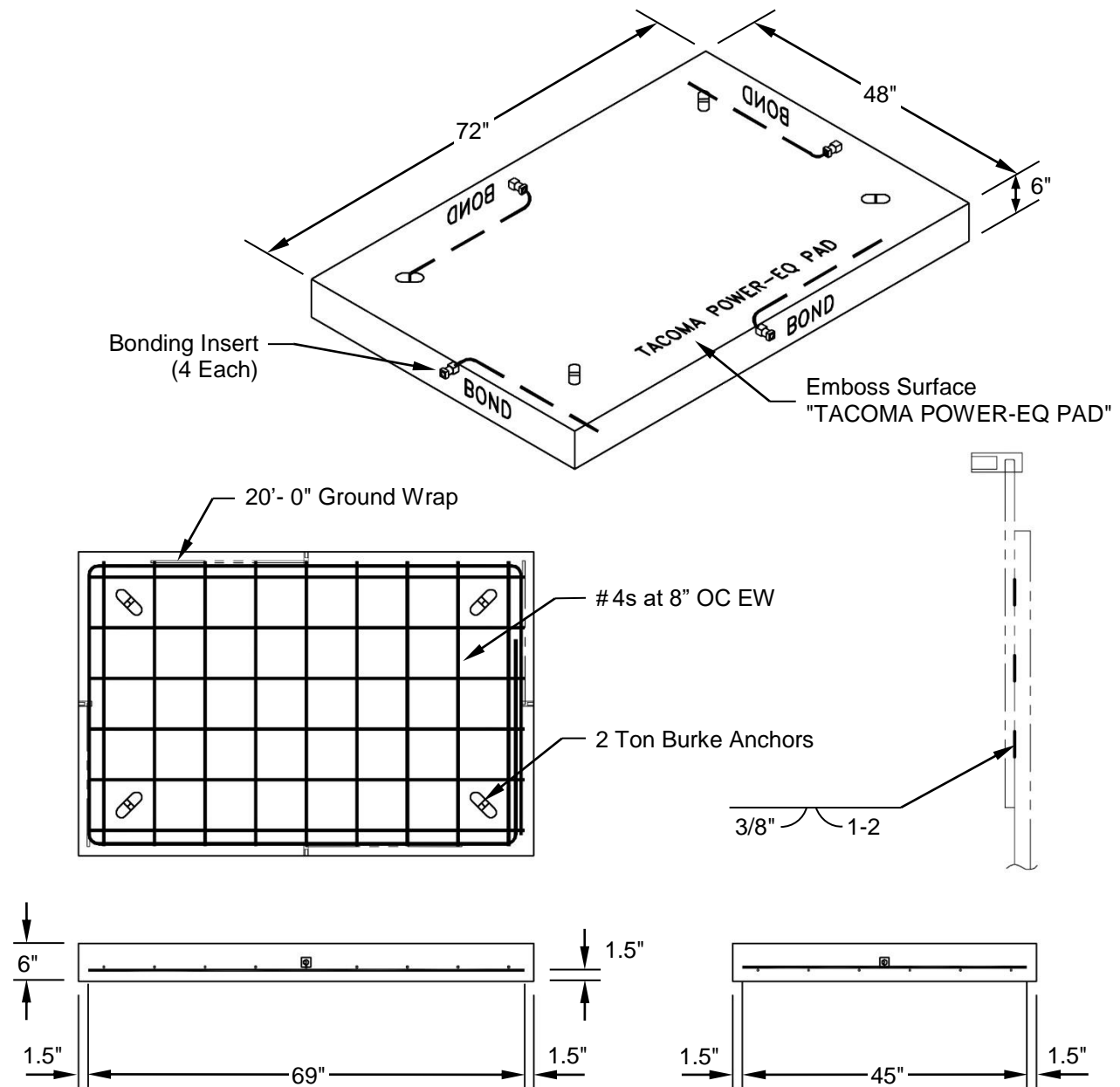


Note: Minimum of (2) #4 reinforcing bars each way

APPENDIX “F”

EQUIPOTENTIAL PAD DRAWING

Equipotential pad – 4ft x 6ft



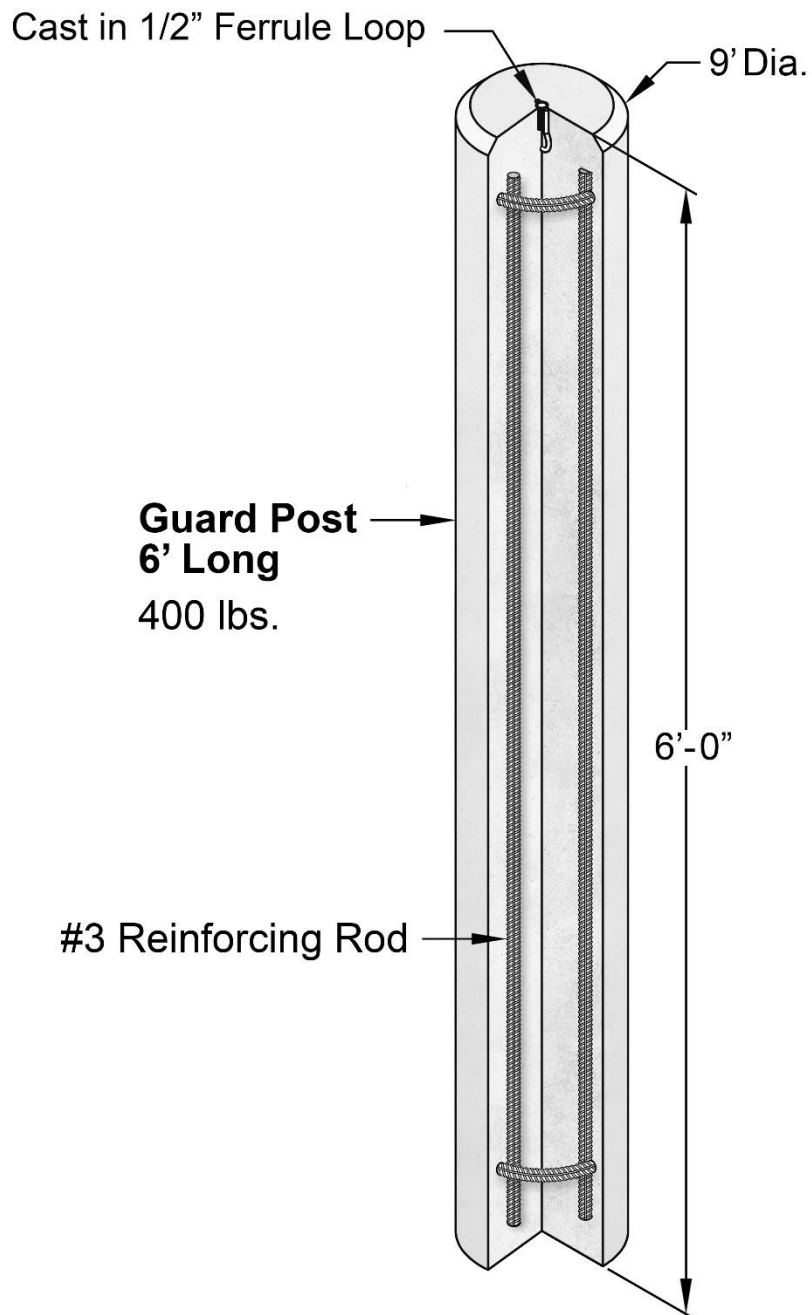
Note:

1. Rebar bonding design incorporated into all slabs as shown.
2. Rebar bonding unit to utilize drilled and tapped brass inserts.
3. Bonding insert welded to a minimum #3 ground wrap no less than 20 feet long continuous.
4. Ground wrap spot welded every 16" to reinforcing mat.

APPENDIX “G”

GUARD POSTS

Guard Post / Bollard 6' Long

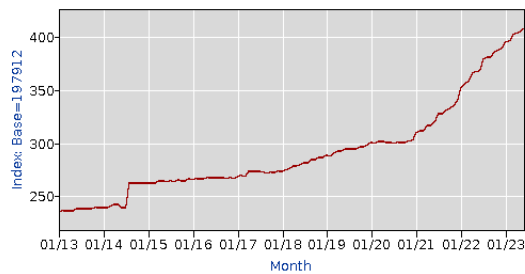


APPENDIX “H”

PRODUCER PRICE INDEX

PPI Industry Data

Series Id: PCU32739032739014
Series Title: PPI industry data for Other concrete product manufacturing-Precast concrete products (excl burial vaults and boxes, slabs and tile, and arch. wall panels), not seasonally adjusted
Industry: Other concrete product manufacturing
Product: Precast concrete products (excl burial vaults and boxes, slabs and tile, and arch. wall panels)
Base Date: 197912



Download: [xlsx](#)

Year	Jan	Feb	Mar	Apr	May	Jun	Jul	Aug	Sep	Oct	Nov	Dec
2013	235.8	235.9	236.1	236.7	236.7	238.0	238.4	238.8	238.6	238.6	239.4	239.2
2014	239.5	239.5	239.9	242.1	242.3	239.4	239.3	262.3	262.4	262.3	262.2	262.3
2015	262.7	262.5	262.0	264.1	264.0	263.5	264.1	263.9	265.2	264.4	264.6	266.1
2016	265.0	266.4	266.4	266.4	267.0	267.2	267.2	267.2	267.2	266.9	267.3	266.5
2017	268.5	269.7	268.8	273.1	273.0	273.9	273.0	272.7	271.9	272.5	272.9	273.4
2018	273.8	274.0	275.9	278.6	278.0	279.8	281.1	281.5	284.2	284.5	286.1	286.7
2019	288.8	287.5	290.6	292.5	292.8	294.2	294.8	294.9	294.7	296.2	296.9	298.6
2020	300.1	299.4	301.5	301.5	300.9	300.9	299.7	300.4	300.6	300.7	301.9	303.0
2021	309.5	311.6	311.5	317.1	317.1	321.0	327.446	327.507	330.989	332.457	334.633	339.559
2022	351.318	356.189	357.825	366.297	366.707	367.872	378.734	381.020	381.120	385.565	387.421	389.663
2023	395.418	395.971	402.374(P)	402.792(P)	404.769(P)	408.544(P)						

P : Preliminary. All indexes are subject to monthly revisions up to four months after original publication.

APPENDIX “I”

CONTRACT SAMPLE

CONTRACT

Resolution No.
Contract No.

This Contract is made and entered into effective as of [Month], [Day], [Year] ("Effective Date") by and between the City of Tacoma, a Municipal Corporation of the State of Washington ("City"), and [supplier name as it appears in Ariba, including dbas or trade names] ("Contractor").

That in consideration of the mutual promises and obligations hereinafter set forth the Parties hereto agree as follows:

- I. Contractor shall fully execute and diligently and completely perform all work and provide all services and deliverables described herein and in the items listed below each of which are fully incorporated herein and which collectively are referred to as "Contract Documents":

 1. Specification No. [Spec Number] [Spec Title] together with all authorized addenda.
 2. Contractor's submittal [or specifically described portions thereof] dated [Enter Submittal Date] submitted in response to Specification No. [Spec Number] [Spec Title].
 3. Describe with specific detail and list separately any other documents that will make up the contract (fee schedule, work schedule, authorized personnel, etc.) or any other additional items mutually intended to be binding upon the parties.

- II. If federal funds will be used to fund, pay or reimburse all or a portion of the services provided under the Contract, the terms and conditions set forth at this Appendix A are incorporated into and made part of this Contract and CONTRACTOR will comply with all applicable provisions of Appendix A and with all applicable federal laws, regulations, executive orders, policies, procedures, and directives in the performance of this Contract.

If CONTRACTOR's receipt of federal funds under this Contract is as a sub-recipient, a fully completed Appendix B, "Sub-recipient Information and Requirements" is incorporated into and made part of this Contract.
- III. In the event of a conflict or inconsistency between the terms and conditions contained in this document entitled Contract and any terms and conditions contained the above referenced Contract Documents the following order of precedence applies with the first listed item being the most controlling and the last listed item the least controlling:
 1. Contract, inclusive of Appendices A and B.
 2. List remaining Contract Documents in applicable controlling order.
- IV. The Contract terminates on xxxxx, and may be renewed for xxxxxxxx
- V. The total price to be paid by City for Contractor's full and complete performance hereunder, including during any authorized renewal terms, may not exceed:
\$[Dollar Amount], plus any applicable taxes.
- VI. Contractor agrees to accept as full payment hereunder the amounts specified herein and in Contract Documents, and the City agrees to make payments at the times and in the manner and upon the terms and conditions specified. Except as may be otherwise provided herein or in Contract Documents Contractor shall provide and bear the expense of all equipment, work and labor of any sort whatsoever that may be required for the transfer of materials and for constructing and completing the work and providing the services and deliverables required by this Contract.
- VII. The City's preferred method of payment is by ePayables (Payment Plus), followed by credit card (aka procurement card), then Electronic Funds Transfer (EFT) by Automated Clearing House (ACH), then check or other cash equivalent. CONTRACTOR may be required to have the capability of accepting the City's ePayables or credit card methods of payment. The City of Tacoma will not accept price changes or pay additional fees when ePayables (Payment Plus) or credit card is used. The City, in its sole discretion, will determine the method of payment for this Contract.

VIII. Failure by City to identify a deficiency in the insurance documentation provided by Contractor or failure of City to demand verification of coverage or compliance by Contractor with the insurance requirements contained in the Contract Documents shall not be construed as a waiver of Contractor's obligation to maintain such insurance.

IX. Contractor and for its heirs, executors, administrators, successors, and assigns, does hereby agree to the full performance of all the requirements contained herein and in Contract Documents.

It is further provided that no liability shall attach to City by reason of entering into this Contract, except as expressly provided herein.

IN WITNESS WHEREOF, the Parties hereto have accepted and executed this Contract, as of the Effective Date stated above, which shall be Effective Date for bonding purposes as applicable.

CITY OF TACOMA:

Signature:

Name:

Title:

CONTRACTOR:

Signature:

Name:

Title:

(City of Tacoma use only - blank lines are intentional)

Director of Finance: _____

Deputy/City Attorney (approved as to form): _____

Approved By: _____

Approved By: _____

Approved By: _____

Approved By: _____

Approved By: _____

Approved By: _____

**APPENDIX A
FEDERAL FUNDING**

1. Termination for Breach

CITY may terminate this Contract in the event of any material breach of any of the terms and conditions of this Contract if CONTRACTOR's breach continues in effect after written notice of breach and 30 days to cure such breach and fails to cure such breach.

2. Prevailing Wages

1. If federal, state, local, or any applicable law requires CONTRACTOR to pay prevailing wages in connection with this Contract, and CONTRACTOR is so notified by the CITY, then CONTRACTOR shall pay applicable prevailing wages and otherwise comply with the Washington State Prevailing Wage Act (RCW 39.12) in the performance of this Contract.
2. If applicable, a Schedule of Prevailing Wage Rates and/or the current prevailing wage determination made by the Secretary of Labor for the locality or localities where the Contract will be performed is made of part of the Contract by this reference. If prevailing wages apply to the Contract, CONTRACTOR and its subcontractors shall:
 - i. Be bound by and perform all transactions regarding the Contract relating to prevailing wages and the usual fringe benefits in compliance with the provisions of Chapter 39.12 RCW, as amended, the Washington State Prevailing Wage Act and/or the Davis-Bacon Act (40 U.S.C. 3141- 3144, and 3146-3148) and the requirements of 29 C.F.R. pt. 5 as may be applicable, including the federal requirement to pay wages not less than once a week.
 - ii. Ensure that no worker, laborer or mechanic employed in the performance of any part of the Contract shall be paid less than the prevailing rate of wage specified on that Schedule and/or specified in a wage determination made by the Secretary of Labor (unless specifically preempted by federal law, the higher of the Washington state prevailing wage or federal Davis-Bacon rate of wage must be paid.
 - iii. Immediately upon award of the Contract, contact the Department of Labor and Industries, Prevailing Wages section, Olympia, Washington and/or the federal Department of Labor, to obtain full information, forms and procedures relating to these matters. Per such procedures, a Statement of Intent to Pay Prevailing Wages and/or other or additional documentation required by applicable federal law, must be submitted by CONTRACTOR and its subcontractors to the CITY, in the manner requested by the CITY, prior to any payment by the CITY hereunder, and an Affidavit of Wages Paid and/or other or additional documentation required by federal law must be received or verified by the CITY prior to final Contract payment.

3. COPELAND ANTI-KICKBACK ACT

For Contracts subject to Davis Bacon Act the following clauses will be incorporated into the Contract:

- A. CONTRACTOR shall comply with 18 U.S.C. § 874, 40 U.S.C. § 3145, and the requirements of 29 C.F.R. pt. 3 as may be applicable, which are incorporated by reference into this Contract.
- B. CONTRACTOR or subcontractor shall insert in any subcontracts the clause above and such other clauses federal agencies may by appropriate instructions require, and also a clause requiring the subcontractors to include these clauses in any lower tier subcontracts.

The prime contractor shall be responsible for the compliance by any subcontractor or lower tier subcontractor with all of these Contract clauses.

- C. Breach. A breach of the contract clauses above may be grounds for termination of the contract, and for debarment as a contractor and subcontractor as provided in 29 C.F.R. § 5.12.

4. EQUAL EMPLOYMENT OPPORTUNITY

During the performance of this Contract, CONTRACTOR will not discriminate against any employee or applicant for employment because of race, color, religion, sex, sexual orientation, gender identity, or national origin. If the CONTRACTOR does over \$10,000 in business a year that is funded, paid or reimbursed with federal funds, CONTRACTOR will take specific and affirmative action to ensure that applicants are employed, and that employees are treated during employment without regard to their race, color, religion, sex, sexual orientation, gender identity, or national origin. Such action shall include, but not be limited to the following:

- A. Employment, upgrading, demotion, or transfer; recruitment or recruitment advertising; layoff or termination; rates of pay or other forms of compensation; and selection for training, including apprenticeship. CONTRACTOR agrees to post in conspicuous places, available to employees and applicants for employment, notices to be provided setting forth the provisions of this nondiscrimination clause.
- B. CONTRACTOR will, in all solicitations or advertisements for employees placed by or on behalf of the Contractor, state that all qualified applicants will receive consideration for employment without regard to race, color, religion, sex, sexual orientation, gender identity, or national origin.
- C. CONTRACTOR will not discharge or in any other manner discriminate against any employee or applicant for employment because such employee or applicant has inquired about, discussed, or disclosed the compensation of the employee or applicant or another employee or applicant. This provision shall not apply to instances in which an employee who has access to the compensation information of other employees or applicants as a part of such employee's essential job functions discloses the compensation of such other employees or applicants to individuals who do not otherwise have access to such information, unless such disclosure is in response to a formal complaint or charge, in furtherance of an investigation, proceeding, hearing, or action, including an investigation conducted by the employer, or is consistent with the Contractor's legal duty to furnish information.
- D. CONTRACTOR will send to each labor union or representative of workers with which he has a collective bargaining agreement or other contract or understanding, a notice to be provided advising the said labor union or workers' representatives of the contractor's commitments under this section, and shall post copies of the notice in conspicuous places available to employees and applicants for employment.
- E. CONTRACTOR will comply with all provisions of Executive Order 11246 of September 24, 1965, and of the rules, regulations, and relevant orders of the Secretary of Labor.
- F. In the event of CONTRACTOR's noncompliance with the nondiscrimination clauses of this contract or with any of the said rules, regulations, or orders, this Contract may be canceled, terminated, or suspended in whole or in part and the CONTRACTOR may be declared ineligible for further federally funded contracts in accordance with procedures

authorized in Executive Order 11246 of September 24, 1965, and such other sanctions may be imposed and remedies invoked as provided in Executive Order 11246 of September 24, 1965, or by rule, regulation, or order of the Secretary of Labor, or as otherwise provided by law.

- G. CONTRACTOR will include the portion of the sentence immediately preceding paragraph (A) and the provisions of paragraphs (A) through (G) in every subcontract or purchase order unless exempted by rules, regulations, or orders of the Secretary of Labor issued pursuant to section 204 of Executive Order 11246 of September 24, 1965, so that such provisions will be binding upon each subcontractor or vendor. CONTRACTOR will take such action with respect to any subcontract or purchase order as the administering agency may direct as a means of enforcing such provisions, including sanctions for noncompliance:

Provided, however, that in the event CONTRACTOR becomes involved in, or is threatened with, litigation with a subcontractor or vendor as a result of such direction by the administering agency, the CONTRACTOR may request the United States to enter into such litigation to protect the interests of the United States.

5. CONTRACT WORK HOURS AND SAFETY STANDARDS ACT

- A. Overtime requirements. Neither CONTRACTOR or subcontractor contracting for any part of the Contract work which may require or involve the employment of laborers or mechanics shall require or permit any such laborer or mechanic in any workweek in which he or she is employed on such work to work in excess of forty hours in such workweek unless such laborer or mechanic receives compensation at a rate not less than one and one-half times the basic rate of pay for all hours worked in excess of forty hours in such workweek.
- B. Violation; liability for unpaid wages; liquidated damages. In the event of any violation of the clause set forth in paragraph (3)(A) of this section the CONTRACTOR and any subcontractor responsible therefor shall be liable for the unpaid wages. In addition, such CONTRACTOR and subcontractor shall be liable to the United States (in the case of work done under contract for the District of Columbia or a territory, to such District or to such territory), for liquidated damages. Such liquidated damages shall be computed with respect to each individual laborer or mechanic, including watchmen and guards, employed in violation of the clause set forth in paragraph (3)(A) of this section, in the sum of \$27 for each calendar day on which such individual was required or permitted to work in excess of the standard workweek of forty hours without payment of the overtime wages required by the clause set forth in paragraph (3)(A) of this section.
- C. Withholding for unpaid wages and liquidated damages. The CITY shall upon its own action or upon written request of an authorized representative of the Department of Labor withhold or cause to be withheld, from any moneys payable on account of work performed by the CONTRACTOR or subcontractor under any such contract or any other Federal

contract with the same prime contractor, or any other federally-assisted contract subject to the Contract Work Hours and Safety Standards Act, which is held by the same prime contractor, such sums as may be determined to be necessary to satisfy any liabilities of such CONTRACTOR or sub-contractor for unpaid wages and liquidated damages as provided in the clause set forth in paragraph (3)(B) of this section.

- D. Subcontracts. The Contractor or subcontractor shall insert in any subcontracts the clauses set forth in paragraph (3)(A) through (D) of this section and also a clause requiring the subcontractors to include these clauses in any lower tier subcontracts. The prime CONTRACTOR shall be responsible for compliance by any subcontractor or lower tier subcontractor with the clauses set forth in paragraphs (3)(A) through (D) of this section.

6. CLEAN AIR ACT

- A. CONTRACTOR agrees to comply with all applicable standards, orders or regulations issued pursuant to the Clean Air Act, as amended, 42 U.S.C. § 7401 et seq.
- B. CONTRACTOR agrees to report each violation to the CITY and understands and agrees that the CITY will, in turn, report each violation as required to assure notification to the Federal Emergency Management Agency, and the appropriate Environmental Protection Agency Regional Office.

CONTRACTOR agrees to include these requirements in each subcontract exceeding \$150,000 financed in whole or in part with federal funds.

7. FEDERAL WATER POLLUTION CONTROL ACT

- A. CONTRACTOR agrees to comply with all applicable standards, orders, or regulations issued pursuant to the Federal Water Pollution Control Act, as amended, 33 U.S.C. 1251 et seq.
- B. CONTRACTOR agrees to report each violation to the CITY and understands and agrees that the CITY will, in turn, report each violation as required to assure notification to the appropriate federal agency.
- C. CONTRACTOR agrees to include these requirements in each subcontract exceeding \$150,000 financed in whole or in part with federal funding.

8. DEBARMENT AND SUSPENSION

- A. This Contract is a Covered Transaction for purposes of 2 C.F.R. pt. 180 and 2 C.F.R. pt. 3000. As such, the CONTRACTOR is required to verify that none of the contractor's principals (defined at 2 C.F.R. § 180.995) or its affiliates (defined at 2 C.F.R. § 180.905) are excluded (defined at 2 C.F.R. § 180.940) or disqualified (defined at 2 C.F.R. § 180.935).
- B. CONTRACTOR must comply with 2 C.F.R. pt. 180, subpart C and 2 C.F.R. pt. 3000, subpart C, and must include a requirement to comply with these regulations in any lower tier Covered Transaction it enters into.

- C. This certification is a material representation of fact relied upon by the CITY. If it is later determined that the CONTRACTOR did not comply with 2 C.F.R. pt. 180, subpart C and 2 C.F.R. pt. 3000, subpart C, in addition to remedies available to CITY, the Federal Government may pursue available remedies, including but not limited to suspension and/or debarment.
- D. CONTRACTOR agrees to comply with the requirements of 2 C.F.R. pt. 180, subpart C and 2 C.F.R. pt. 3000, subpart C throughout the period of this Contract and to include a provision requiring such compliance in its lower tier covered transactions.

9. BYRD ANTI-LOBBYING AMENDMENT

- A. Contractors who apply or bid for an award of \$100,000 or more shall file the required certification with CITY. Each tier certifies to the tier above that it will not and has not used Federal appropriated funds to pay any person or organization for influencing or attempting to influence an officer or employee of any agency, a Member of Congress, officer or employee of Congress, or an employee of a Member of Congress in connection with obtaining any Federal contract, grant, or any other award covered by 31 U.S.C. § 1352. Each tier shall also disclose any lobbying with non-Federal funds that takes place in connection with obtaining any Federal award. Such disclosures are forwarded from tier to tier up to the recipient who in turn will forward the certification(s) to the CITY.
- B. If applicable, CONTRACTOR must sign and submit to the CITY the certification required by Appendix A to 44 CFR Part 18 contained at Appendix A-1 to this Contract.

10. PROCUREMENT OF RECOVERED MATERIALS

- A. In the performance of this Contract, CONTRACTOR shall make maximum use of products containing recovered materials that are EPA-designated items unless the product cannot be acquired:
 - i. Competitively within a timeframe providing for compliance with the contract performance schedule;
 - ii. Meeting contract performance requirements; or
 - iii. At a reasonable price.
- B. Information about this requirement, along with the list of EPA- designated items, is available at EPA's Comprehensive Procurement Guidelines web site, <https://www.epa.gov/smm/comprehensive-procurement-guideline-cpg-program>.
- C. CONTRACTOR also agrees to comply with all other applicable requirements of Section 6002 of the Solid Waste Disposal Act.

APPENDIX A-1

APPENDIX A to 44 C.F.R. PART 18 – CERTIFICATION REGARDING LOBBYING Certification for Contracts, Grants, Loans, and Cooperative Agreements

The undersigned certifies, to the best of his or her knowledge and belief, that:

1. No Federal appropriated funds have been paid or will be paid, by or on behalf of the undersigned, to any person for influencing or attempting to influence an officer or employee of an agency, a Member of Congress, an officer or employee of Congress, or an employee of a Member of Congress in connection with the awarding of any Federal contract, the making of any Federal grant, the making of any Federal loan, the entering into of any cooperative agreement, and the extension, continuation, renewal, amendment, or modification of any Federal contract, grant, loan, or cooperative agreement.
2. If any funds other than Federal appropriated funds have been paid or will be paid to any person for influencing or attempting to influence an officer or employee of any agency, a Member of Congress, an officer or employee of Congress, or an employee of a Member of Congress in connection with this Federal contract, grant, loan, or cooperative agreement, the undersigned shall complete and submit Standard Form-LLL, "Disclosure Form to Report Lobbying," in accordance with its instructions.
3. The undersigned shall require that the language of this certification be included in the award documents for all subawards at all tiers (including subcontracts, subgrants, and contracts under grants, loans, and cooperative agreements) and that all subrecipients shall certify and disclose accordingly.

This certification is a material representation of fact upon which reliance was placed when this transaction was made or entered into. Submission of this certification is a prerequisite for making or entering into this transaction imposed by section 1352, title 31, U.S. Code. Any person who fails to file the required certification shall be subject to a civil penalty of not less than \$10,000 and not more than \$100,000 for each such failure.

The Contractor, _____, certifies or affirms the truthfulness and accuracy of each statement of its certification and disclosure, if any. In addition, the Contractor understands and agrees that the provisions of 31 U.S.C. Chap.38, Administrative Remedies for False Claims and Statements, apply to this certification and disclosure, if any.

Signature of Contractor's Authorized Official

Name and Title of Contractor's Authorized Official

Date

APPENDIX B—Sub-recipient information and requirements

Pursuant to 2 CFR 200.332(a)(1) Federal Award Identification

(i) Agency Name (must match the name associated with its unique entity identifier)		(ii) Unique Entity Identifier <i>(i.e., DUNS)</i>	City of Tacoma Number for This Agreement
(iii) Federal Award Identification Number (FAIN)	(iv) Federal Award Date	(v) Federal Period of Performance Start and End Date	(vi) Federal Budget Period Start and End Date
(vii) Amount of Federal Funds <i>Obligated</i> to the agency <i>by this action</i>: \$	(viii) Total Amount of Federal Funds <i>Obligated</i> to the agency		(ix) Total Amount of the Federal Award <i>Committed</i> to the agency \$
(x) Federal Award Project Description: CORONAVIRUS STATE AND LOCAL FISCAL RECOVERY FUNDS– City of Tacoma			
(xi) Federal Awarding Agency: DEPARTMENT OF THE TREASURY	Pass-Through Entity: City of Tacoma		Awarding Official Name and Contact Information:
(xii) Assistance Listing Number and Name (the pass-through entity must identify the dollar amount made available under each Federal award and the Assistance Listing number at time of disbursement)			(xiii) Identification of Whether the Award is R&D
(xiv) Indirect Cost Rate for the Federal Award	Award Payment Method (lump sum payment or reimbursement) REIMBURSEMENT		