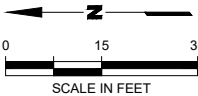
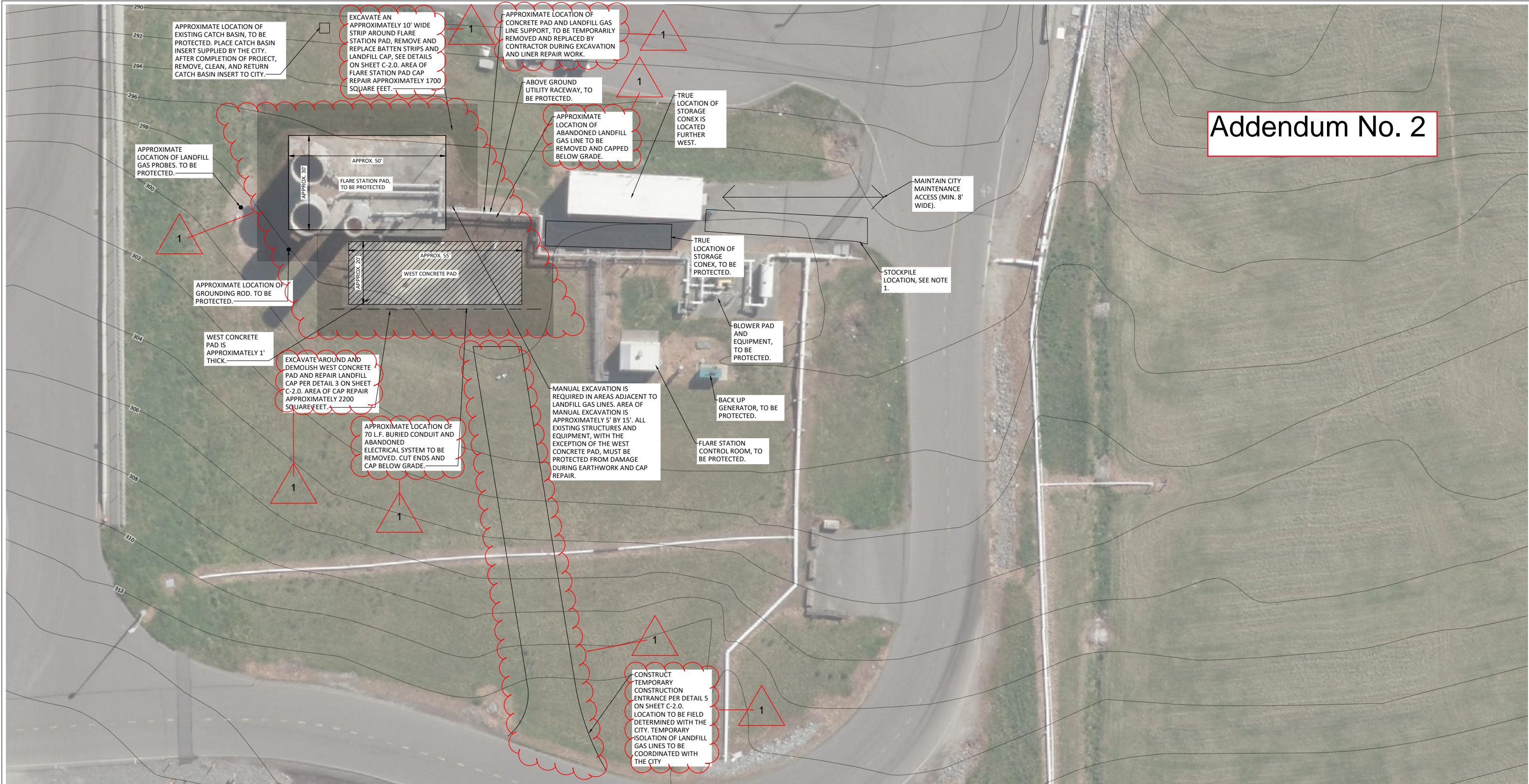


Addendum No. 2



NOTES:

- STOCKPILE EXCAVATED SAND, COVER MATERIAL, AND TOPSOIL FOR DISPOSAL OFFSITE. PLACE A PLASTIC COVER OVER STOCKPILED MATERIAL PER DETAIL 1 ON SHEET C2.0 IF NOT USED WITHIN 48 HOURS. LOCATION OF THE STOCKPILE IS DEPENDENT ON CONTRACTOR'S MEANS AND METHODS. STOCKPILE SITES MUST BE APPROVED BY THE CITY OF TACOMA.
- AERIAL PHOTO IS FROM CITY OF TACOMA (2015) TO SHOW APPROXIMATE LOCATIONS OF EXISTING SITE FEATURES. CONTRACTOR TO VERIFY LOCATIONS IN FIELD PRIOR TO CONSTRUCTION.
- CONTOURS FROM CITY OF TACOMA (1990)



REVISION		DATE	APPD
0.	ISSUED FOR AGENCY REVIEW	5/5/23	KMS
1.	ADDENDUM 1	8/2/23	KMS

FINAL CONSTRUCTION CHECKED	DATE	SCALE
BY	5/5/23	AS NOTED
DATE	DESIGNED	CHECKED
FIELD BOOKS	KMA	KMS
	DRAWN	
	JJV	
	DRAWING NAME	
	P TESC EXCAVATION.dwg	



CITY OF TACOMA
ENVIRONMENTAL SERVICES DEPARTMENT
SOLID WASTE MANAGEMENT
LANDFILL GAS FLARE STATION CAP REPAIR
SITE PLAN

SPEC. NO.	-
PROJECT NO.	-
DWG NO.	C1.0
SHEET	3 OF 4