

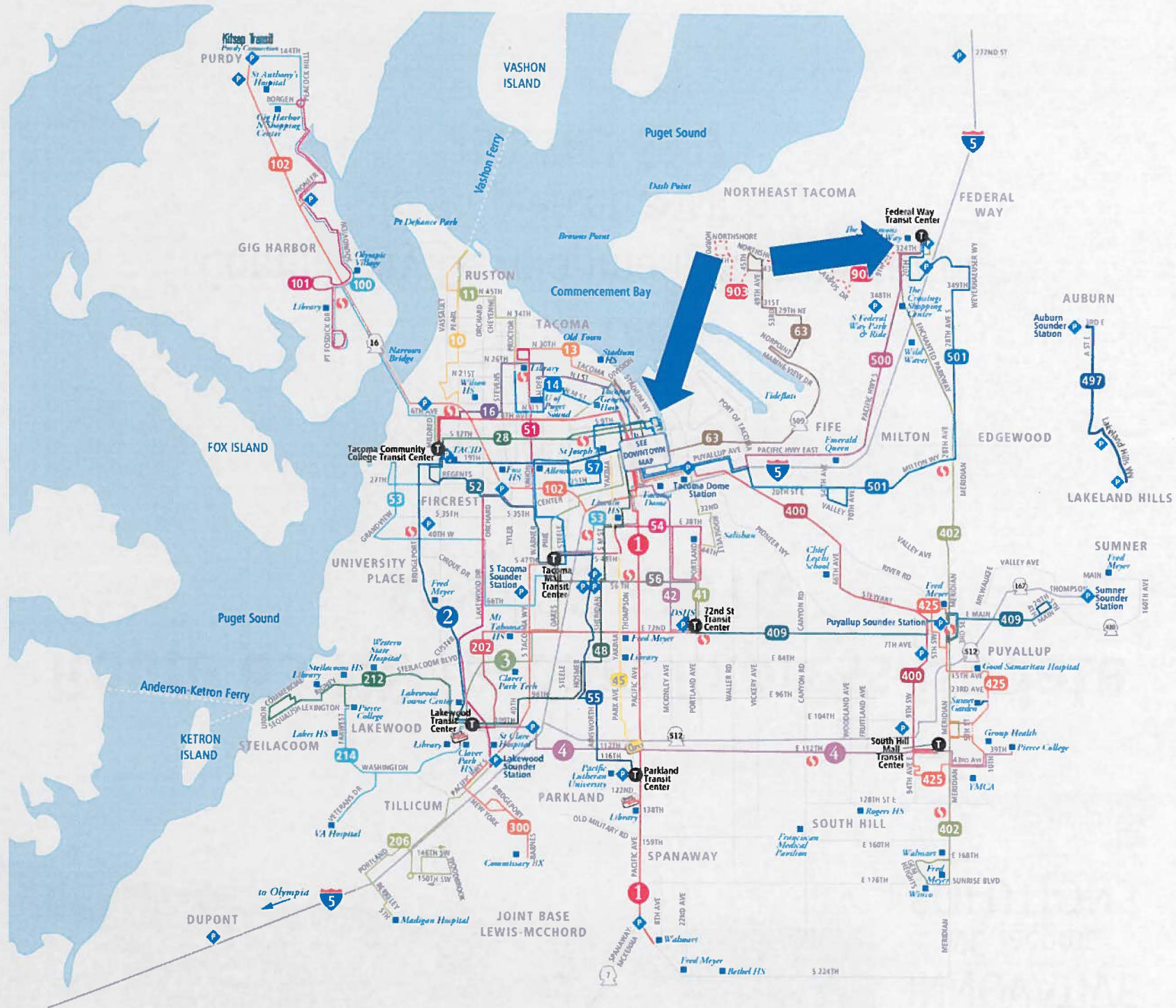
INNOVATIVE
NE Tacoma
SOLUTIONS



Route 63 NE Tacoma Express Update

May 18, 2016

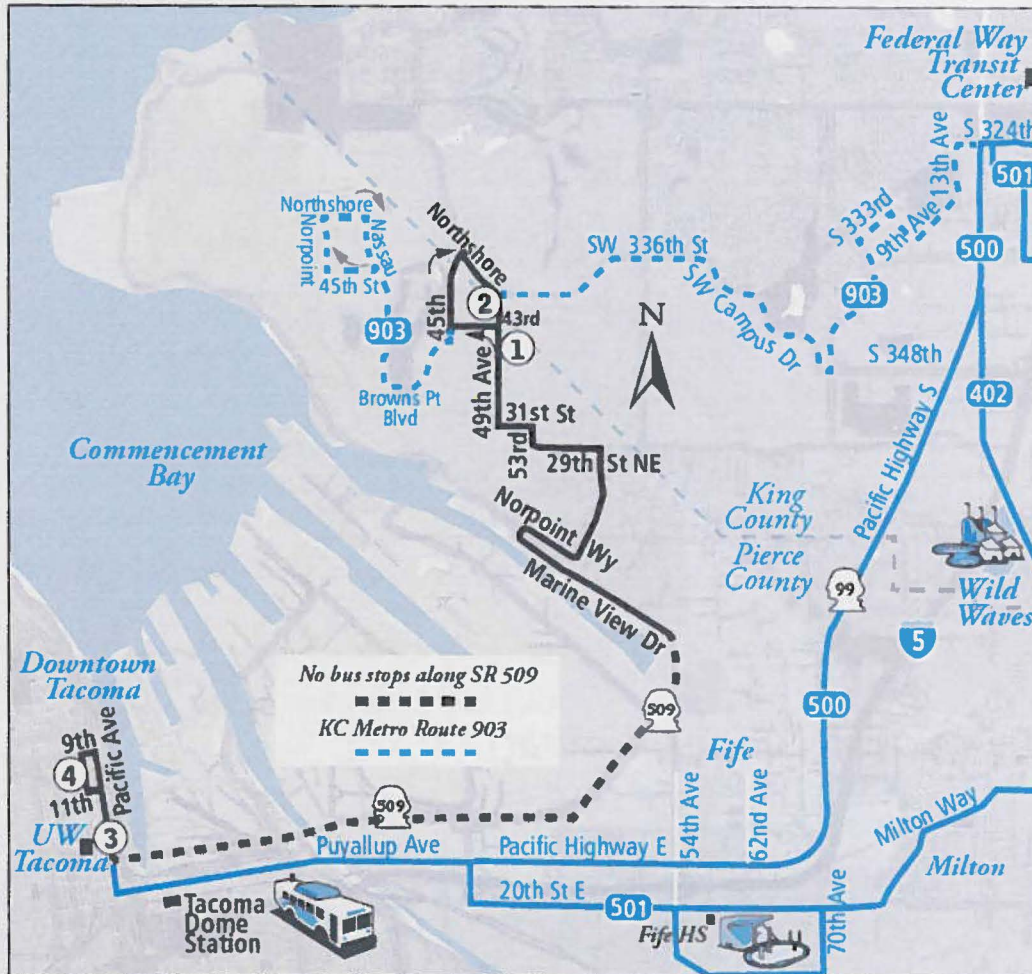
Tina Lee
Community Development Administrator
tlee@piercetransit.org
253-589-6887



Route

63

NE Tacoma Express-NE Tacoma to Downtown



RT 63 - NE Tacoma Express

- Pilot started September 2015
- Peak Express Service
- 3 AM&PM trips on weekdays
- Trips timed to meet KCM 903

KING COUNTY METRO RT 903

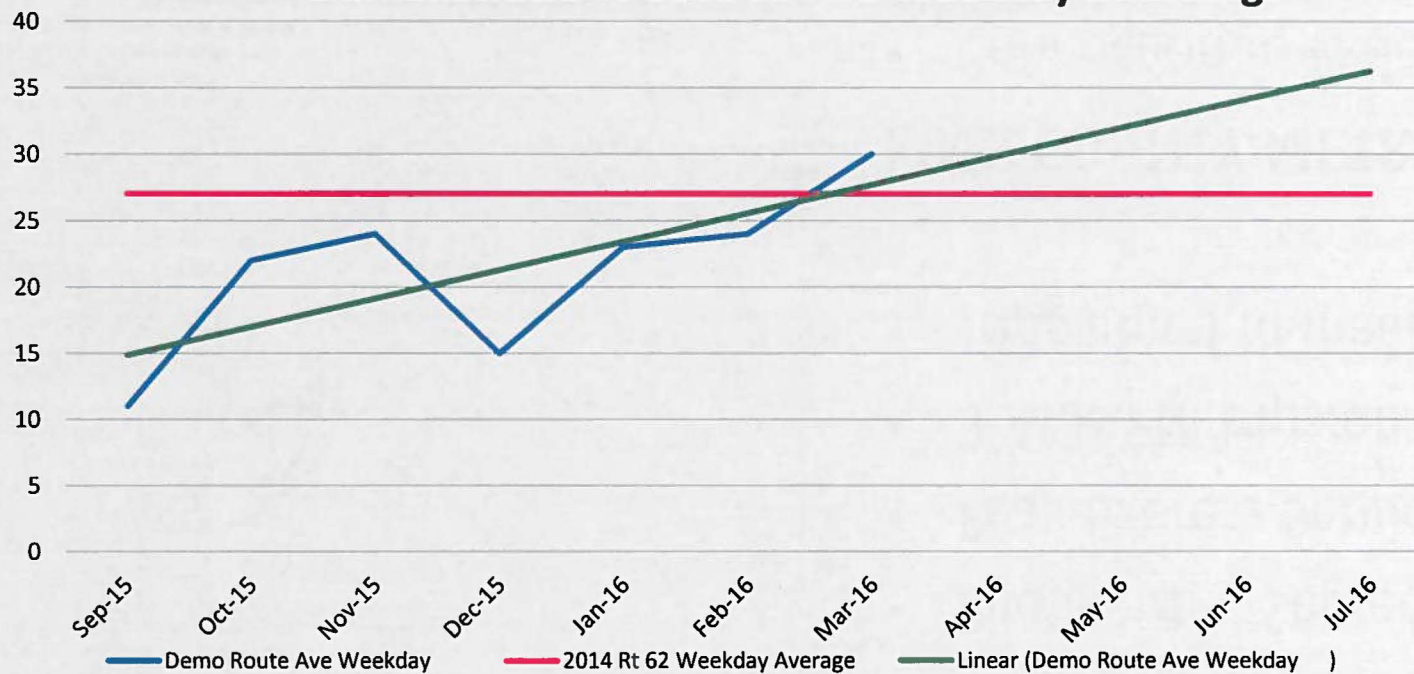
- Connection to Federal Way
- Peak Service
- 20 trips on weekdays

AVERAGE WEEKDAY BOARDINGS

INNOVATIVE
NE Tacoma
SOLUTIONS



Demonstration Route 63 Ave Weekday Boardings



Route	Average Daily Boardings	Passengers Per Service Hour
Historic Rt 62, Ave. Weekday Boardings, 2015	17 boardings	3.20
Route 63 Ave. Weekday Boardings, March 2016	30 boardings	4.33
Pierce Transit System Average, 2015 Year End		21.0

Title VI Service Equity Analysis

INNOVATIVE
NE Tacoma
SOLUTIONS



No Disparate Impact or Disproportionate Burden Impact identified.

Minority Proportion of Population

Disparate impact occurs when the minority population adversely affected is 10% more than the average minority population of Pierce Transit's service area.

Summary of Service Change	Census Blocks Along Route	Average Population in Service Area	Variance
New NE Tacoma Service	38.1%	35.3%	2.8%

Low Income Proportion of Population

Disproportionate Burden occurs when the low-income population adversely is 5% more than the average low-income population of Pierce Transit's service area.

Summary of Service Change	Census Blocks Along Route	Average Population in Service Area	Variance
New NE Tacoma Service	10.2%	14.3%	-4.1%

Title VI Analysis located at project website:

<http://www.piercetransit.org/route-63-demonstration-project//>

TIMELINE

INNOVATIVE NE Tacoma SOLUTIONS



2016

- Apr 21 NE Tacoma Neighborhood Council Update
- Apr 28 CTAG Update
- May 5 Open House
- May 9 Public Hearing
- May 18 Tacoma Transportation Commission Update
- Jun 13 Board Meeting

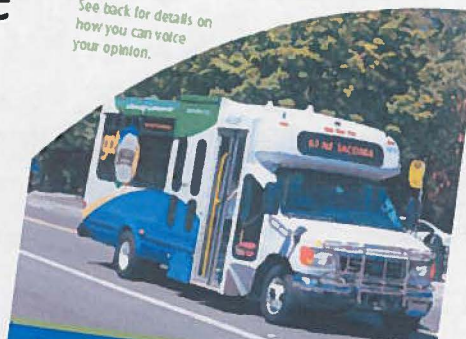
We Want Your
Input By May 27th



Route 63 NE Tacoma Express

In September 2015, Pierce Transit started a new bus service in your area, offering connections to Downtown Tacoma and Federal Way. Pierce Transit is proposing that the Agency continue operating Route 63 NE Tacoma Express peak commuter express service to Downtown Tacoma. We would also continue to partner with King County Metro, which operates the Route 903 as a connecting service bringing passengers to the NE Tacoma Express, and to the Federal Way Transit Center. The Pierce Transit Board of Commissioners will take action on this proposal at it's June 13, 2016 meeting.

See back for details on
how you can voice
your opinion.



Do you believe the Route 63 NE Tacoma Express is an asset to the community? In order to serve you better, what changes would you like made to the route?

Tacoma Mall Neighborhood Subarea Plan & EIS

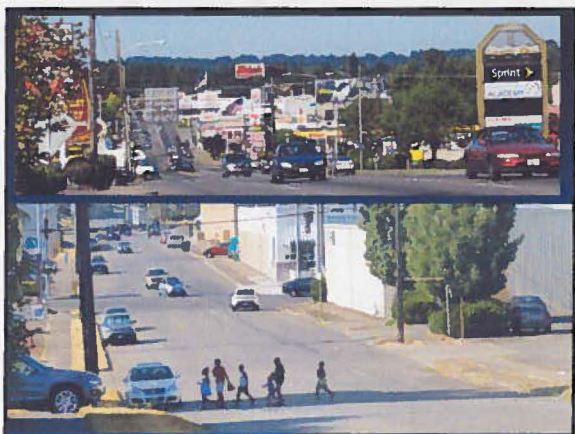


Transportation Commission
May 18, 2016

City of Tacoma

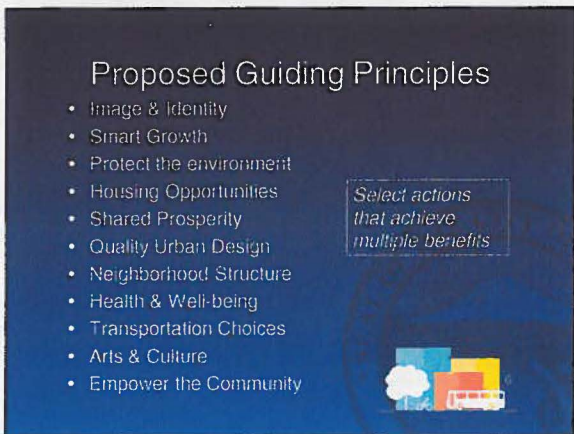
3 Square Blocks







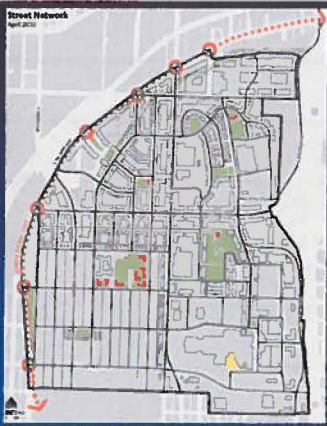




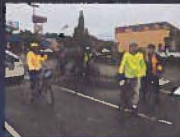
Street Network

ACTIONS:

- Reconnect the grid
- Ped-oriented land use
- Complete Streets
- Tame arterials
- Address maintenance
- Safety focus
- Direct I-5 off ramp
- Handle growth through: Mode shift & internal capture

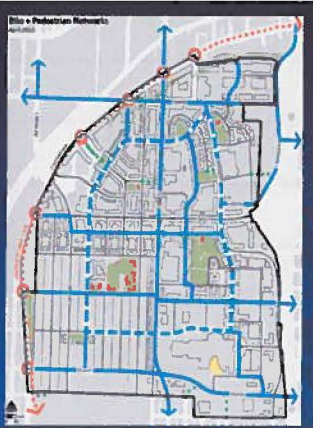


Bikes & Peds



ACTIONS:

- Bike network
- Pedestrian connections
- Complete streets
- Internal connections
- Connect to city networks
- Linear parks

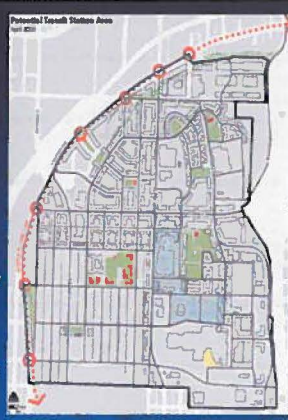


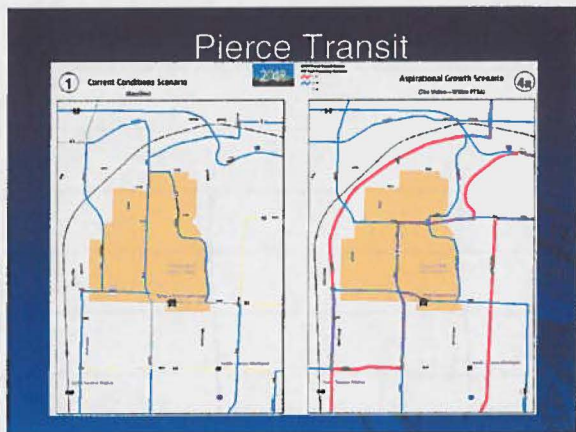
Transit



ACTIONS:

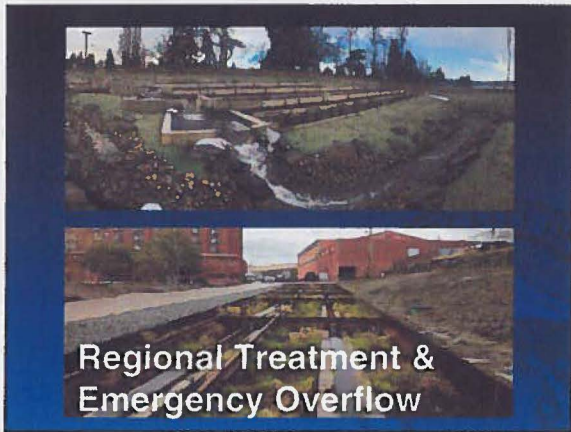
- Plan for high capacity, quality & frequency service
- Connect to City & region
- Consolidated transit hub
- Transit-oriented development

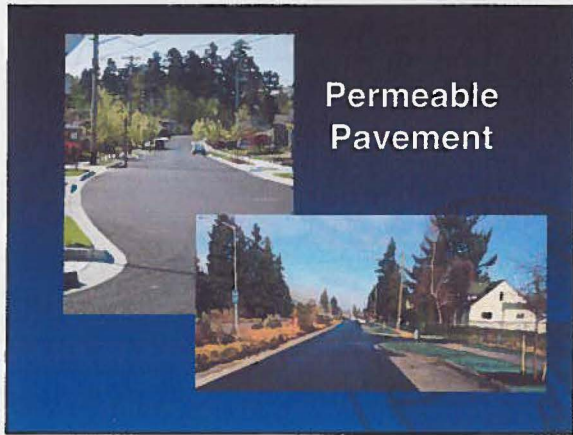


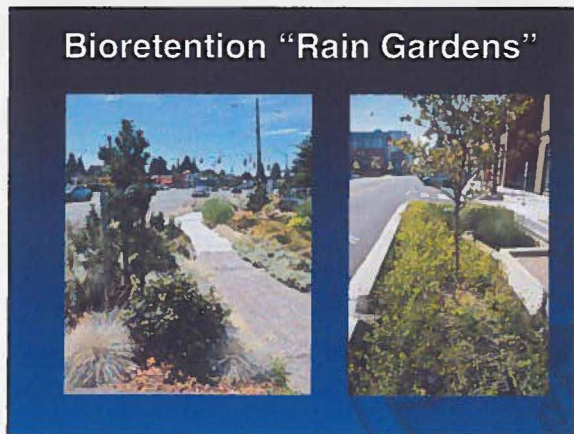


- ### Other Transit Opportunities
- Sound Transit
 - ST3 Regional transit package
 - Current proposal: no service to the Tacoma Mall Neighborhood
 - Other service providers
 - Intercity Transit
 - Innovative approaches

- ### Watershed Approach
- Regional Treatment & Emergency Overflows
 - Permeable Pavements
 - Bioretention "Rain Gardens"
-
- Regional Treatment & Emergency Overflows
Bicycle/disk Outlets
Permeable Roadways







Existing Tree Canopy

Quadrant	Acres	Current Canopy
NE	129.19	12%
NW	93.80	7%
SE	194.19	8%
SW	183.74	10%

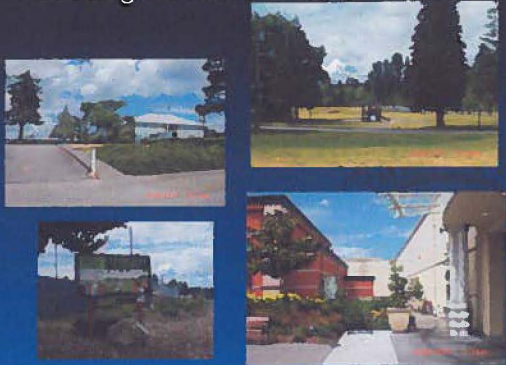


Tree Canopy Targets

Quadrant	Acres	Canopy Goal
NE	129.19	20%
NW	93.80	20%
SE	194.19	20%
SW	183.74	25%



Existing Parks and Open Space



Parks

- Neighborhood structure
- A park in each quadrant
- Loop Road
- Trees
- Stormwater
- Public & private



Next Steps

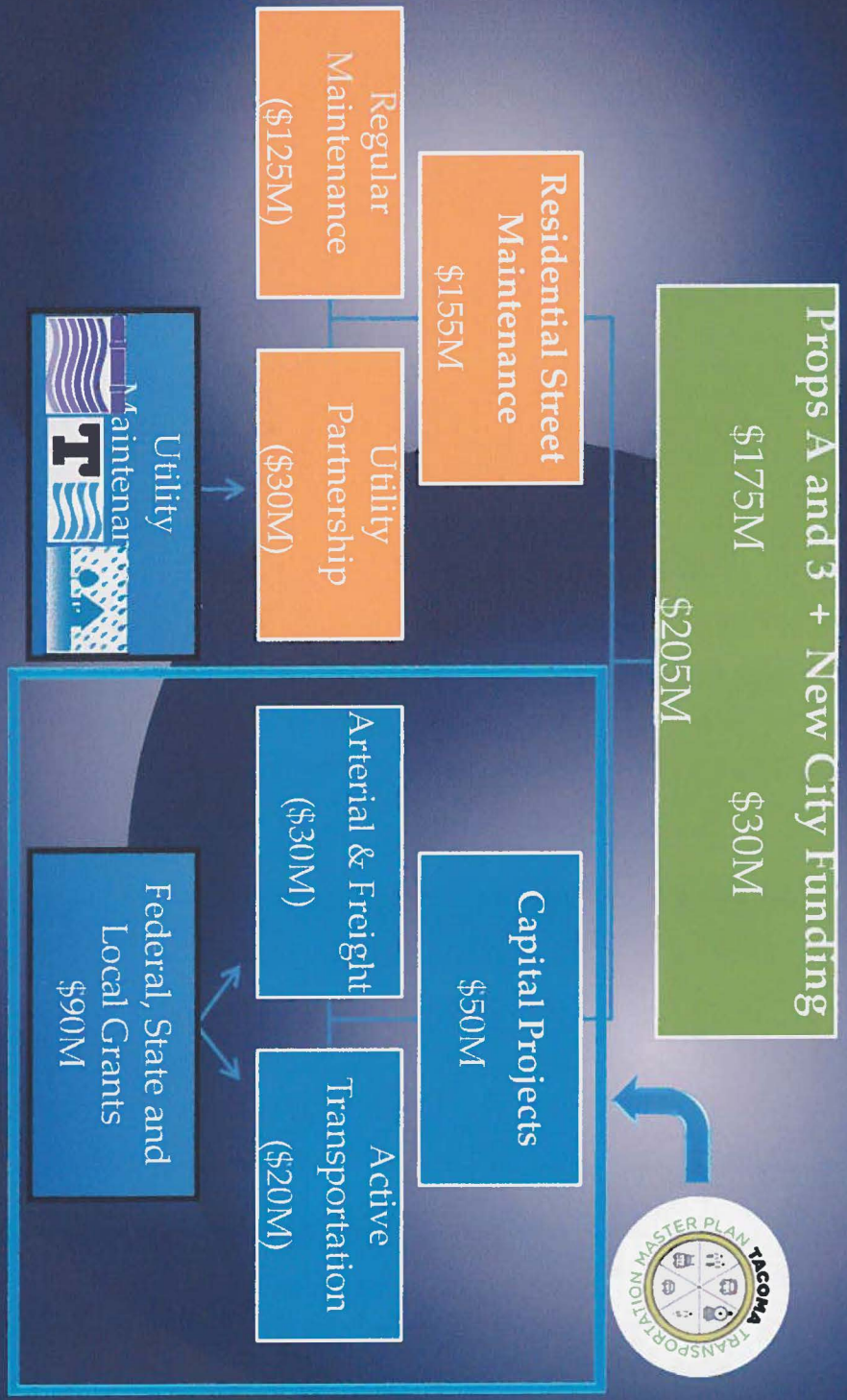


- Stakeholders
 - May 25, 2016 Meeting
 - More opportunities
- Planning Commission - *Summer*
- Council - *Winter*



www.tacomamalneighborhood.com

Capital Projects



Approximately \$325M in Total Investment

Capital Projects – Mobility

- Safe Routes to School
 - ✧ Flashing Beacons
 - ✧ Funding SRTS Implementation Plan
- Walk the Talk – Pedestrian Safety Improvements
- ADA Transition Plan
- Short-Term Bicycle Projects
- Bike Lane Striping
- Missing Link Sidewalks
- Hazardous Sidewalk Program

Prioritization

- Walking
- Bicycling
- Transit