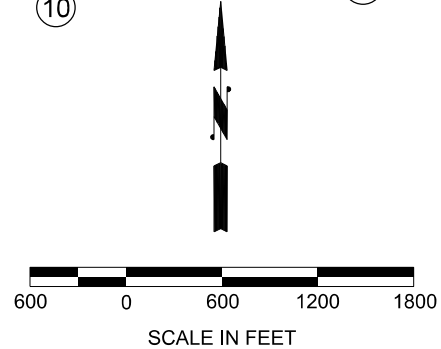


36" PUYALLUP AVE BRIDGE DETOUR M4-9 (MOD) ①	36" PUYALLUP AVE BRIDGE DETOUR M4-9 (MOD) ②	36" PUYALLUP AVE BRIDGE DETOUR M4-9 (MOD) ③	36" PUYALLUP AVE BRIDGE DETOUR M4-9 (MOD) ④
48" PUYALLUP AVE BRIDGE DETOUR M4-9 (MOD) ⑤	48" PUYALLUP AVE BRIDGE DETOUR M4-9 (MOD) ⑥	72" Puyallup Ave Bridge CLOSED FOLLOW DETOUR SPECIAL ⑪	
48" BRIDGE WILL BE CLOSED MON DA TO MON DA R11-1501 (MOD) BLACK ON WHITE ⑩	72" Puyallup Ave Bridge DETOUR to Port of Tacoma to Fife SPECIAL ⑫		

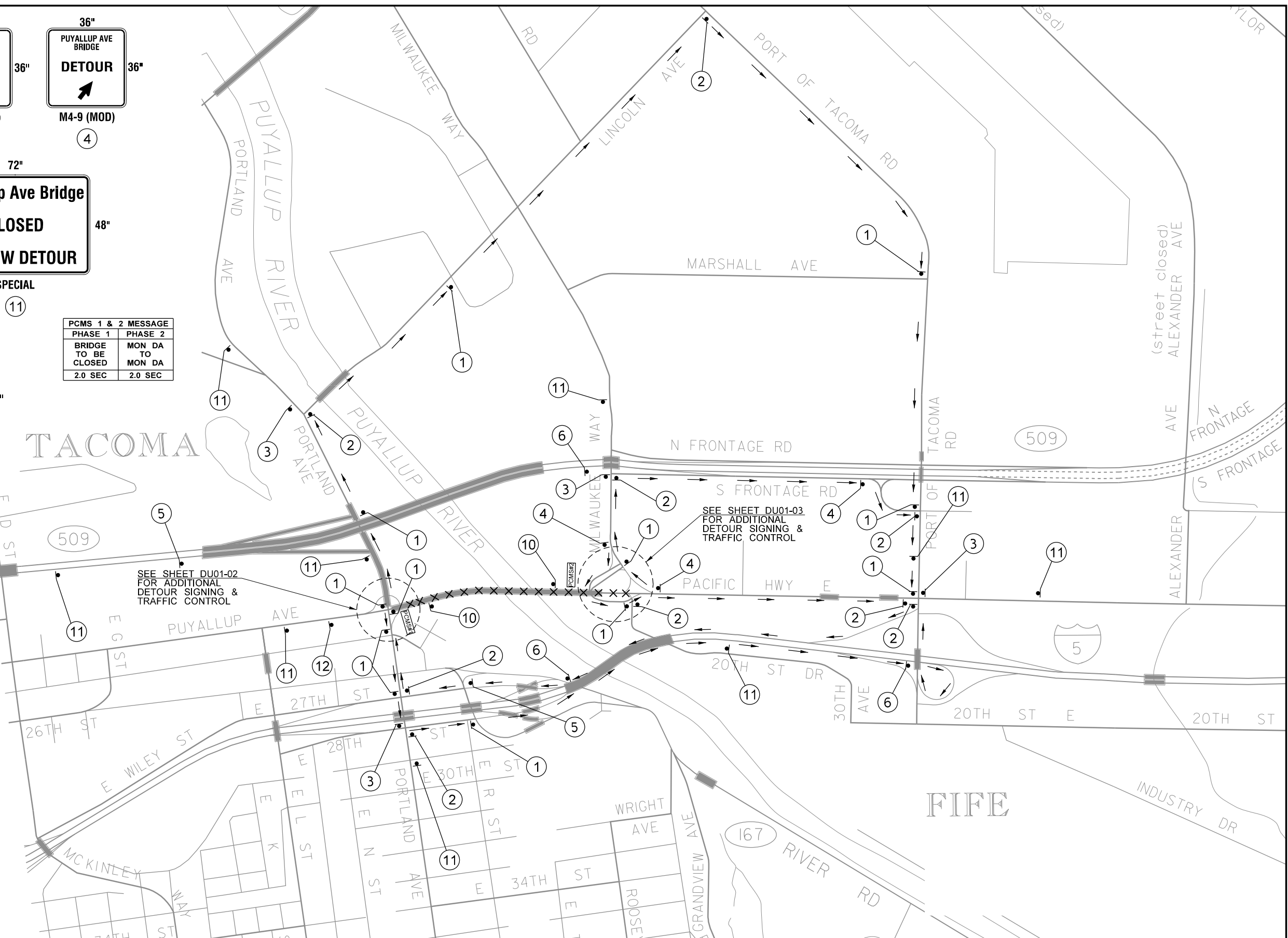
PCMS 1 & 2 MESSAGE	
PHASE 1	PHASE 2
BRIDGE TO BE CLOSED	MON DA TO MON DA
2.0 SEC	2.0 SEC



- NOTES:
- ALL SIGNS ARE BLACK ON ORANGE UNLESS NOTED OTHERWISE.
 - "BRIDGE WILL BE CLOSED" SIGN AND PCMS SHALL BE PLACED 14 DAYS PRIOR TO CLOSURE.
 - SIGN LOCATIONS ARE APPROXIMATE. SIGNS SHALL NOT OBSTRUCT VIEW OF EXISTING PERMANENT SIGNING.

LEGEND:

- CLOSURE: XXXX
- DIRECTION OF DETOUR ROUTE: →
- CONSTRUCTION SIGN CLASS A: [Symbol]
- SIGN ASSEMBLY NUMBER: (X)
- PORTABLE CHANGEABLE MESSAGE SIGN: [PCMS]



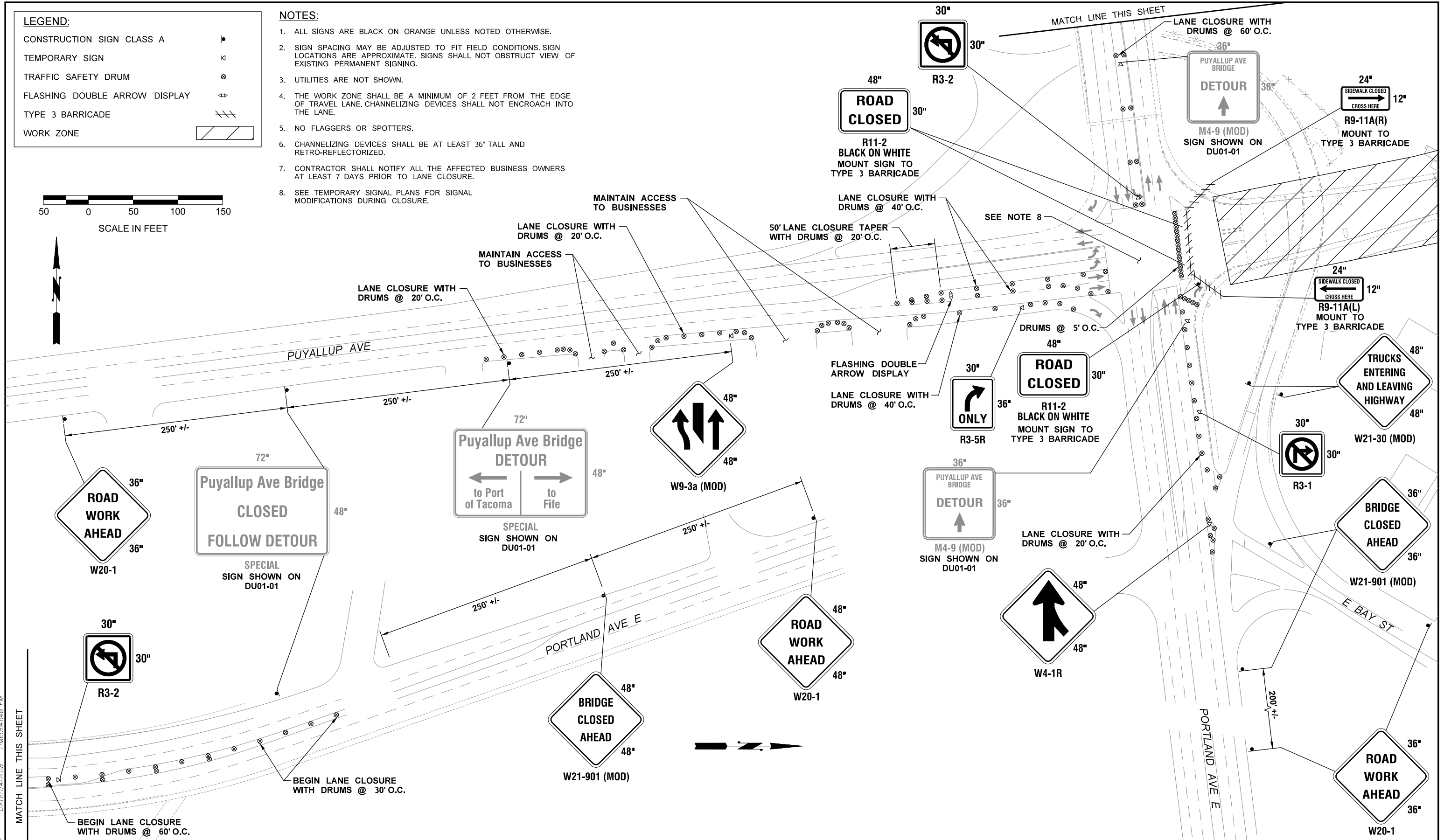
PLOTTED BY: hckkca DATE: 1/3/2018 TIME: 14:35 PM

BNSF MP38.66 DOT# 085712L LAT. N47°14.5671' LON. W122°24.5646'	REGION STATE OLYMPIC WASH	FED. AID PROJ. NO. BRM-3246 (012)		REV B - FINAL REVIEW REV A - PRELIMINARY REVIEW	1/02/18 11/13/17	FINAL CONSTRUCTION CHECKED DATE 1/3/2018 SCALE 1:1200 DESIGNED PRC CHECKED ARW DRAWN PRC PROJECT NAME DRAWING NAME ...AC8913_F5_DU01-01.dgn	CITY OF TACOMA DEPARTMENT OF PUBLIC WORKS PUYALLUP RIVER BRIDGE F-16 A & B REPLACEMENT DESIGN BUILD DETOUR PLAN 1 - PUYALLUP AVE BRIDGE CLOSURE	DU01-01
---	------------------------------	--------------------------------------	--	--	---------------------	---	--	---------

LEGEND:

CONSTRUCTION SIGN CLASS A	
TEMPORARY SIGN	
TRAFFIC SAFETY DRUM	
FLASHING DOUBLE ARROW DISPLAY	
TYPE 3 BARRICADE	
WORK ZONE	

- NOTES:**
1. ALL SIGNS ARE BLACK ON ORANGE UNLESS NOTED OTHERWISE.
 2. SIGN SPACING MAY BE ADJUSTED TO FIT FIELD CONDITIONS. SIGN LOCATIONS ARE APPROXIMATE. SIGNS SHALL NOT OBSTRUCT VIEW OF EXISTING PERMANENT SIGNING.
 3. UTILITIES ARE NOT SHOWN.
 4. THE WORK ZONE SHALL BE A MINIMUM OF 2 FEET FROM THE EDGE OF TRAVEL LANE. CHANNELIZING DEVICES SHALL NOT ENCR OACH INTO THE LANE.
 5. NO FLAGGERS OR SPOTTERS.
 6. CHANNELIZING DEVICES SHALL BE AT LEAST 36" TALL AND RETRO-REFLECTORIZED.
 7. CONTRACTOR SHALL NOTIFY ALL THE AFFECTED BUSINESS OWNERS AT LEAST 7 DAYS PRIOR TO LANE CLOSURE.
 8. SEE TEMPORARY SIGNAL PLANS FOR SIGNAL MODIFICATIONS DURING CLOSURE.



DATE: 1/14/2018 TIME: 3:41:46 PM PLOTTED BY: crows/epc

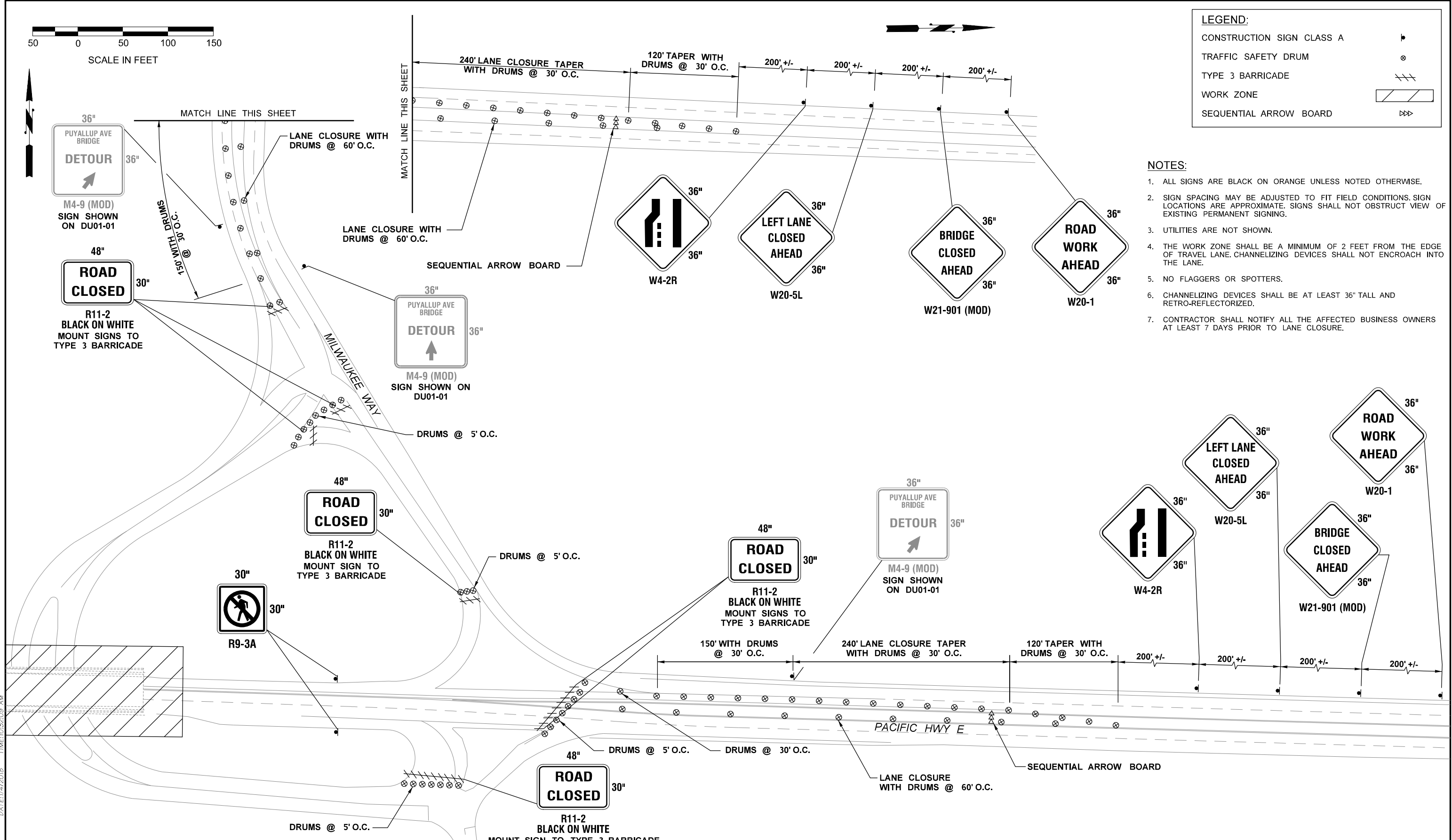
BNSF MP38.66 DOT# 085712L LAT. N47°14.5671' LON. W122°24.5646' DPKR MP146.43 DOT# 808725N LAT. N47°14.5700' LON. W122°24.5482'		REGION OLYMPIC STATE WASH. FED. AID PROJ. NO. BRM-3246 (012)		REV B - FINAL REVIEW REV A - PRELIMINARY REVIEW REVISION	DATE 1/02/18 DATE 11/13/17	FINAL CONSTRUCTION CHECKED DATE 1/4/2018 SCALE 1:100 DESIGNED PRC CHECKED ARW DRAWN PRC PROJECT NAME DRAWING NAME \L\C8513_FS_DU01-02.dgn		CITY OF TACOMA DEPARTMENT OF PUBLIC WORKS PUYALLUP RIVER BRIDGE F-16 A & B REPLACEMENT DESIGN BUILD DETOUR PLAN 1 - PUYALLUP AVE BRIDGE CLOSURE	DU01-02 SHEET NO. SHEET OF
---	--	---	--	--	-------------------------------	---	--	--	----------------------------------



LEGEND:

CONSTRUCTION SIGN CLASS A	
TRAFFIC SAFETY DRUM	
TYPE 3 BARRICADE	
WORK ZONE	
SEQUENTIAL ARROW BOARD	

- NOTES:**
1. ALL SIGNS ARE BLACK ON ORANGE UNLESS NOTED OTHERWISE.
 2. SIGN SPACING MAY BE ADJUSTED TO FIT FIELD CONDITIONS. SIGN LOCATIONS ARE APPROXIMATE. SIGNS SHALL NOT OBSTRUCT VIEW OF EXISTING PERMANENT SIGNING.
 3. UTILITIES ARE NOT SHOWN.
 4. THE WORK ZONE SHALL BE A MINIMUM OF 2 FEET FROM THE EDGE OF TRAVEL LANE. CHANNELIZING DEVICES SHALL NOT ENCRoACH INTO THE LANE.
 5. NO FLAGGERS OR SPOTTERS.
 6. CHANNELIZING DEVICES SHALL BE AT LEAST 36" TALL AND RETRO-REFLECTORIZED.
 7. CONTRACTOR SHALL NOTIFY ALL THE AFFECTED BUSINESS OWNERS AT LEAST 7 DAYS PRIOR TO LANE CLOSURE.



PLOTTED BY: hckkca DATE: 1/14/2018 TIME: 10:32:09 AM

BNSF MP38.66 DOT# 085712L LAT. N47°14.5671' LON. W122°24.5646'	REGION OLYMPIC STATE WASH	FED. AID PROJ. NO. BRM-3246 (012)		REV B - FINAL REVIEW REV A - PRELIMINARY REVIEW	DATE 1/02/18 1/13/17	FINAL CONSTRUCTION CHECKED DATE 1/4/2018	SCALE 1:100 DESIGNED PRC CHECKED ARW DRAWN PRC PROJECT NAME	CITY OF TACOMA DEPARTMENT OF PUBLIC WORKS PUYALLUP RIVER BRIDGE F-16 A & B REPLACEMENT DESIGN BUILD DETOUR PLAN 1 - PUYALLUP AVE BRIDGE CLOSURE	DU01-03
---	------------------------------	--------------------------------------	--	--	-------------------------	---	---	--	---------