

# City of Tacoma 2023 Bridge Load Restrictions

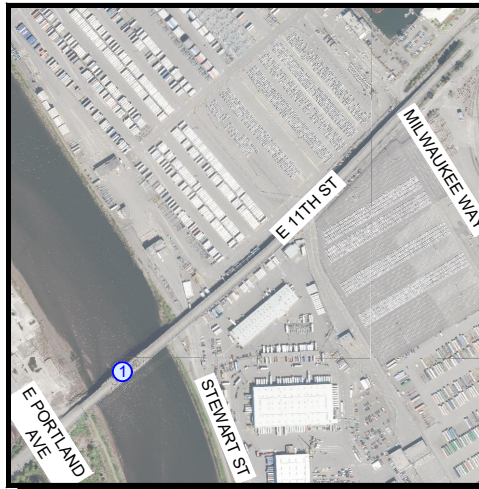
## Why does the City load rate its bridges?

- Bridges age, deteriorate, or become unable to carry legal vehicle loads during the course of their life span (typically 75 years).
- To have a consistent summary of the load carrying capacities, all bridges are rated using a standard set of vehicles, called 'Legal Loads'.
- For the safety of the general public and traffic using the bridge structure, a load rating is performed.
- Bridges which have insufficient load carrying capacity are posted for restricted loads.
- The City of Tacoma follows state and federal law by placing weight limits on trucks in order to protect pavements and bridges from damage and excessive wear and tear. It is the City's mission to keep people and business moving by operating and improving the transportation systems vital to taxpayers and communities. To do this, we must manage the resources entrusted to us for the highest possible return of value and to protect citizen's' investment in the City's infrastructure. It is vital that City decision makers and the public understand the trade-offs between economic benefit and increased infrastructure costs what occur when considering increasing or decreasing load limits.

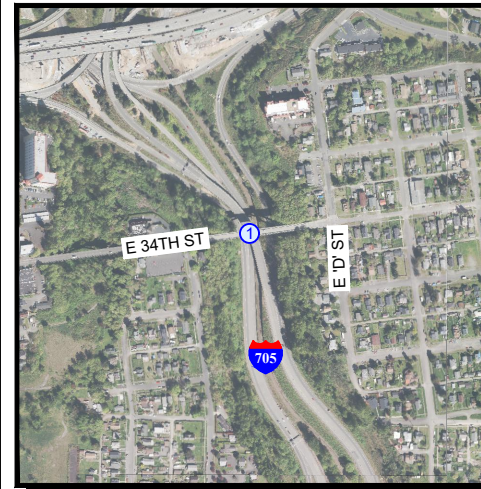


Hylebos Bridge  
Bridge ID: Bridge No.:  
① 0002376A 27 Hylebos

WEIGHT LIMITS	
SINGLE UNIT VEHICLES	
6 AXLES	33 T
7 AXLES	35 T
EMERGENCY VEHICLES	
SINGLE AXLE	16T
TANDEM	24T
GROSS	34T



11th Street Bridge  
(over the Puyallup River)  
Bridge ID: Bridge No.:  
① 0006069A 21Trus11



E 34th Street Bridge  
(Harold Moss Bridge)  
(over SR 7)  
Bridge ID: Bridge No.:  
① 08512700 29 34OvSR7

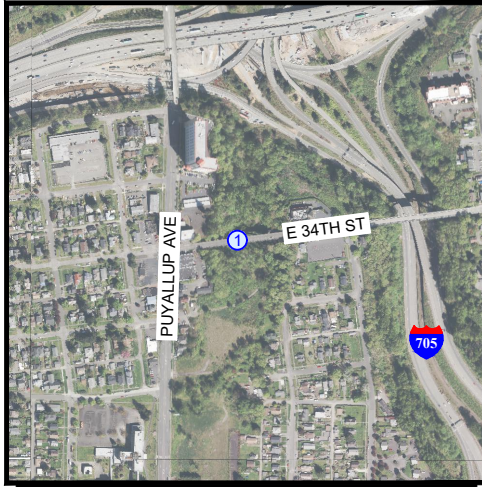
EMERGENCY VEHICLE WEIGHT LIMITS	
SINGLE AXLE	17T
TANDEM	26T
GROSS	36T



Fishing Wars Memorial  
Corridor of Bridges  
Bridge ID: Bridge No.:  
① 08907400 14 FWMB A  
② 08501100 15 FWMB B  
③ 08656500 16 FWMB C  
④ 08656200 17 FWMB D  
⑤ 05656600 18 FWMB E

WEIGHT RESTRICTIONS IN FORCE	
FISHING WARS MEMORIAL BRIDGE	
20 TONS	
USE I-5	

# City of Tacoma 2023 Bridge Load Restrictions



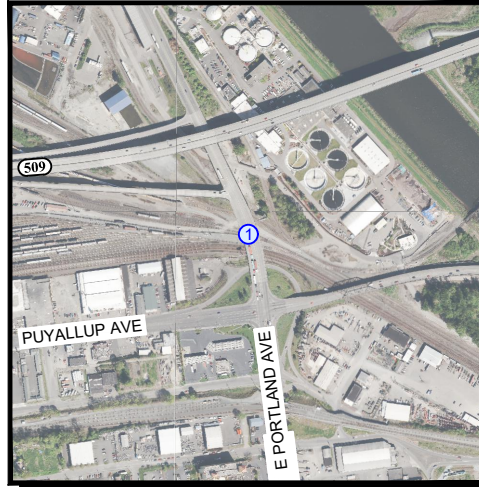
E 34th Street Bridge  
(over Gulch)  
Bridge ID: Bridge No.:  
① 08512200 28 34thP-A

OVERWEIGHT  
EMERGENCY  
VEHICLES  
ON BRIDGE

**10  
MPH**

EMERGENCY  
VEHICLE  
WEIGHT LIMITS

SINGLE AXLE	17T
TANDEM	22T
GROSS	31T



River Street Viaduct  
Bridge ID: Bridge No.:  
① 08501300 19 Riv St

OVERWEIGHT  
EMERGENCY  
VEHICLES  
ON BRIDGE

**10  
MPH**

EMERGENCY  
VEHICLE  
WEIGHT LIMITS

SINGLE AXLE	16T
TANDEM	24T
GROSS	34T



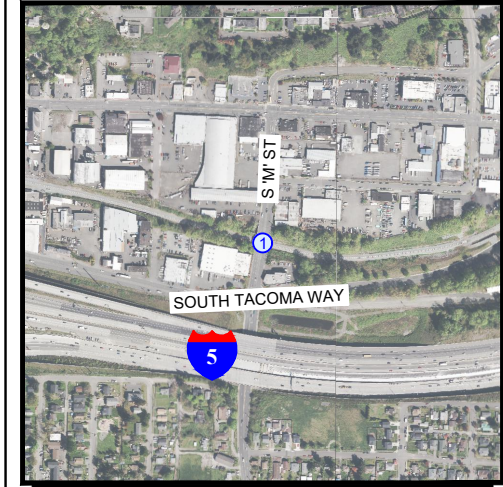
Lincoln Avenue Truss  
Bridge ID: Bridge No.:  
① 0006069A 23 Lincoln

OVERWEIGHT  
EMERGENCY  
VEHICLES  
ON BRIDGE

EMERGENCY  
VEHICLE  
WEIGHT LIMITS

TANDEM	26T
GROSS	36T

**TFD EXEMPT**



South M Street  
Bridge ID: Bridge No.:  
① 08511200 31 M St

OVERWEIGHT  
EMERGENCY  
VEHICLES  
ON BRIDGE

**10  
MPH**

**WEIGHT LIMIT  
REDUCED**

SINGLE UNIT VEHICLES

5 AXLES	29 T
6 AXLES	30 T
7 AXLES	31 T